

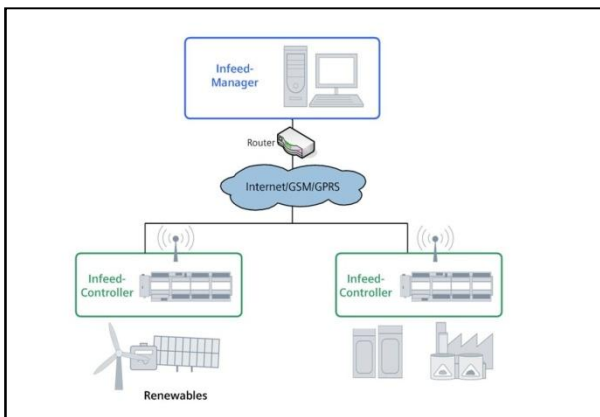
Infeed-Controller and Infeed-Manager

An efficient system solution that will really pay off for you

The energy world is currently in a period of transition as it moves towards becoming an integrated energy system. In order to cover growing demand for electricity, the grids of today and tomorrow must integrate ever more renewable energy sources, and enable a bidirectional flow of energy and communication. Smart grids help to generate and use electricity efficiently and according to regulators requirements.

The rapidly growing proportion of locally generated, renewable energy from wind, solar and biomass power plants and the framework conditions prescribed by the regulators pose new challenges for grid operators. With the requirements for the monitoring and regulation of infeed capacity from renewable energy sources, combined heat and power (CHP) and mine gas plants, there is a need for intelligent system solutions and flexible grid infrastructures to support grid operators with these tasks.

With the Infeed-Management system solution, Siemens offers you the best-in-class tool for simple and efficient capacity monitoring and infeed regulation for the infeed plants in your supply area.



Configuration

Infeed-Box:
Intelligent telecontrol technology for the capacity monitoring of distributed generation



The compact Infeed-Controller

Universal application, individual adaptation, comprehensive functions and expansion options to meet the tasks of today and tomorrow:

- Collection of current 'actual' values
- Monitoring of contractually relevant values (infeed energy and connected load or infeed capacity)
- Integrated regulation function at predefined setpoints of 100%, 60%, 30% and 0%
- Option of immediate emergency shutdown, in case setpoints cannot be applied for technical reasons
- Self-contained functionality in any generating plants
- High levels of information and control availability for the grid operator
- Compact dimensions (300 x 415 x 215 mm)
- Plastic-protective housing with clear-view lid
- Cost-effective and future-proof solution.

Answers for infrastructure and cities.

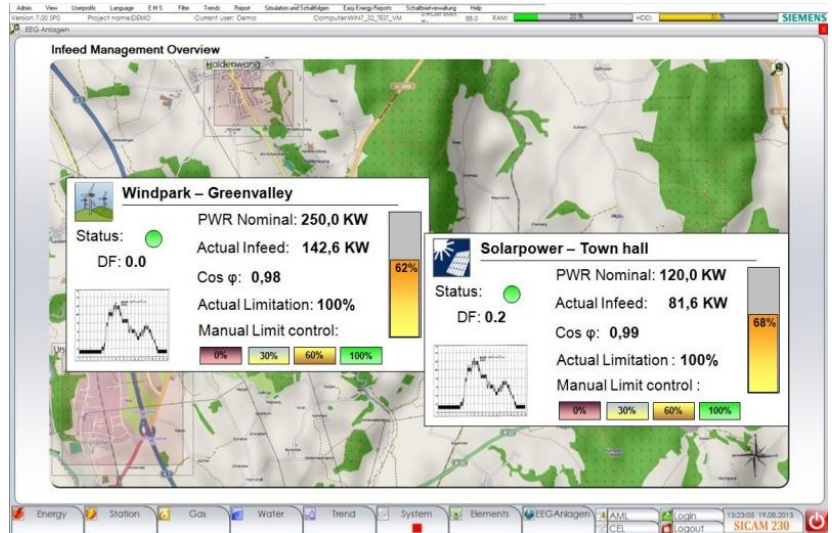
Infeed-Manager:

The management software for infeed from distributed generation

Independence from installed telecontrol and control center technology, standardized communication and the comprehensive and intelligent functionalities guarantee optimal and efficient infeed management:

- Data collection and management of infeed plants
- Monitoring of current status of infeed plants
- Planning, execution and reporting of necessary Infeed-Management measures
- Recording, documentation and reporting of actual infeed reductions
- Discrimination-free planning and independent regulation of infeed from generation plants at the predefined levels (100%, 60%, 30% or 0%) taking account of measures already performed

The Infeed-Manager is based on the tried-and-tested Siemens SICAM 230 control system, and meets all pre-conditions for the fulfillment of possible future statutory provisions.



Publisher and Copyright © 2013:
Siemens AG
Infrastructure & Cities Sector
Smart Grid Division
Energy Automation
Humboldtstr. 59
90459 Nuremberg, Germany

For more information, please contact our
Customer Support Center
Phone: +49 180 524 84 37
Fax: +49 180 524 24 71
(Changes depending on provider)

E-mail: support.ic@siemens.com