

Protection

PSS®SINCAL

PSS®SINCAL offers a wide range of procedures for the complex field of protection in electrical transmission, distribution and industry networks.

PSS®SINCAL covers the calculation of protection settings, the coordination of devices and the documentation and simulation of events and different stages of protection security assessment. It supports the ANSI codes 27, 47, 49, 50, 51, 59, 67, 79, 81 and 87 including negative phase over- / underfrequency, over- / undervoltage and enhanced differential protection.

Dimensioning of low-voltage networks (fuse assessment)

This module is a setting assessment of fuses in meshed and radial LV systems with short circuit sweep. The evaluations is based on:

- Safety factor (factor-rated current)
- Conductor cross section
- Thermal damage – short circuit
- Thermal load time and large control current
- Maximum breaking time

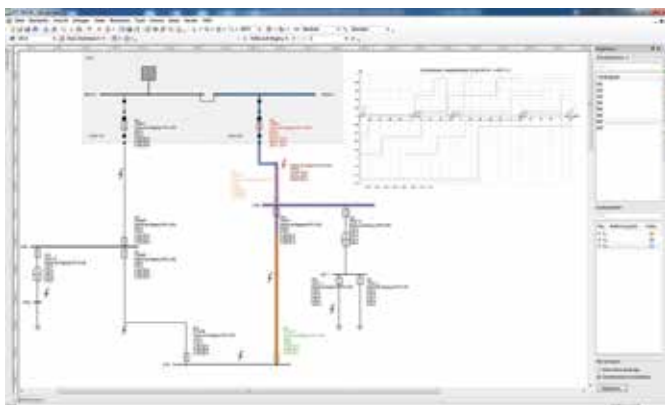
It supports VDE 0102 and VDE 0100.

Settings calculation for distance protection

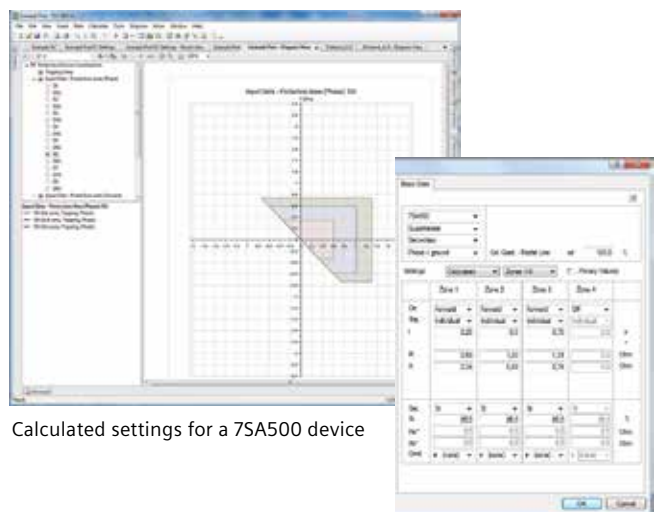
When PSS®SINCAL calculates grading values, it gives priority to the setting that causes the protection to respond selectively, regardless of how the network is connected.

Since there are different concepts or philosophies for setting protection devices, PSS®SINCAL offers several customizable options:

- DISTAL strategy
- Line impedance strategy
- Line impedance strategy connect
- Medium-voltage network strategy



Reach zones for distance protection devices



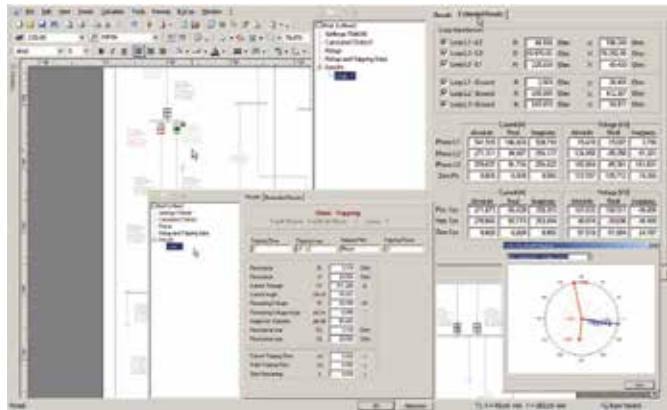
Calculated settings for a 7SA500 device

Features are:

- Automatic calculation of settings for up to six zones plus auto-reclosure and tele-protection
- Unlimited network configurations
- Detailed vendor-specific relay library
- Automatic evaluation of protection zones and worst-case configuration
- Multiple user-customizable setting strategies including one method that is selective for any network configuration
- Calculation of primary and secondary settings
- Diverse diagrams including R-X or Zt

Overcurrent time protection

The PSS®SINCAL Protection Simulation module simulates the time sequence for fault clearance in networks, even in very complex, meshed networks. The locations of faults to be examined can be defined at nodes or any location on a power line or on cables. Single-phase, two-phase or three-phase faults as far as complex multiple faults, dynamic fault events and sequences can be simulated, arc impedances included. The engine behind the simulation is short-circuit or dynamic analysis.

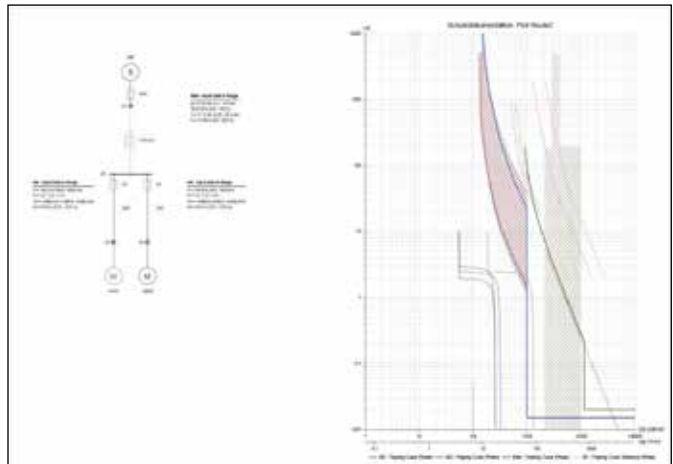


Stepped event analysis with results in map and masks

- Stepped event simulation and co-ordination and documentation of overcurrent time-protection in radial and meshed systems
- Interactive stepped event / sequence analysis including graphical display of coordination
- Simulation of main and backup protection
- Fault at nodes and branches including fault sweeps
- Signal transmission between relays for tripping, interlocking or transfer trip
- Protection library with several thousand relays
- User-defined protection devices based on predefined blocks

- Coordination across different voltage levels
- Adjustable settings with the diagram
- Multi-axis diagram
- Time different calculator
- Cable and generator, motor (stator and rotor) and transformer damage curves
- Motor startup curves also with NEMA (xxx) models including different voltage conditions
- Directional elements
- Common timer for pickup and tripping
- Stepped color coding of device states in the network diagram
- Display of all settings and states in the network diagram
- Reports for device settings and co-ordination checks

The documentation of full grading paths can be done automatically. It contains both input data and simulation data.

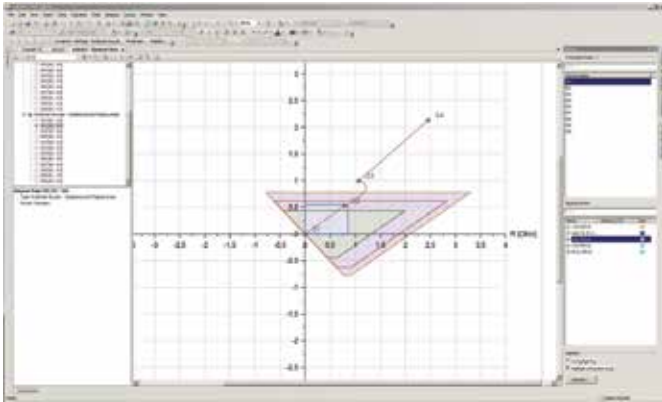


Documentation of a protection path including path in network and its diagram with result data

Enhanced protection simulation

Besides the normal protection simulation for industry network with overcurrent time protection, the program can also consider all types of protection devices that have been installed in the network at the same time. In addition it offers:

- Automatic simulation of protection routes with fault sweeps
- Set of result diagrams such as Z-t, X-T, Z-measured, Z-path (Z and X), R-X with line trajectories
- Color coded reach zone displays in the network diagram
- Fault locator



Z-t diagram with line trajectory for a distance protection relay

Protection security assessment

PSS@SINCAL offers different options based on the network and protection structure.

For radial distribution feeders with overcurrent time protection devices and definite time settings, PSS@SINCAL offers a tool to check the correct protection settings for I>, I>> and I>>> for current selectivity and time selectivity.

Check OC Settings

Check OC Settings | Export to CSV | Help

Overview

Errors and Excludes:

- Count of errors: 2
- Count of excluded locations: 1

Selection:

- Current selectivity
- Time selectivity

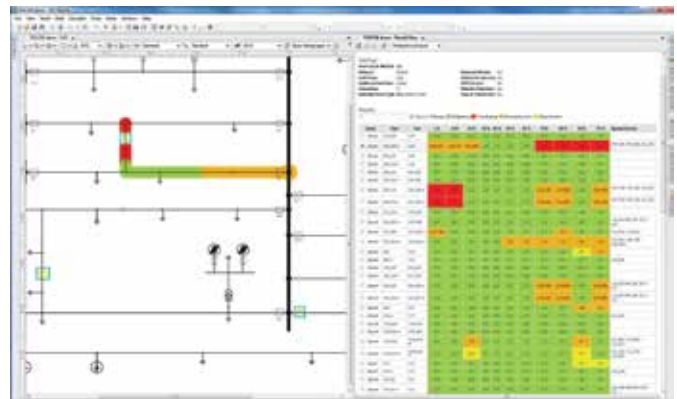
Feeder	Location	Phase		Ground		Comment
		Setting	State	Setting	State	
N2/L2	OC1	209PLUS.1	OK	209PLUS.1	OK	
	OC2	209PLUS.1	OK	209PLUS.2	OK	
	OC3	209PLUS.1	NC	209PLUS.1	NC	Excluded because of XX config
	OC4	209PLUS.1	OK	209PLUS.1	OK	
	OC4.1	209PLUS.1	OK	209PLUS.1	OK	
N2/L5	OC4.2	209PLUS.1	OK	209PLUS.1	OK	
	OC6	209PLUS.1	OK	209PLUS.1	OK	
	OC7	209PLUS.3	OK	209PLUS.3	OK	
	OC8	209PLUS.1	OK	209PLUS.1	OK	
	OC9	209PLUS.1	KD - I> -> Time t : wrong value(s)	209PLUS.1	OK	
	OC10	209PLUS.1	KD - I> -> Time t : wrong value(s)	209PLUS.1	OK	
	OC11	209PLUS.3	OK	209PLUS.3	OK	

Automatic overcurrent time protection setting check for radial networks

The protection reach zone factors for primary and backup protection and the overload tripping of protection devices are checked automatically for distribution networks and during the hosting capacity analysis. Adaptive protection settings are recommended.

With the PSA module, PSS@SINCAL offers a fully automatic validation of protection settings by systematical short-circuit sweeps throughout the entire network (or network groups). The wizard which leads through the procedure allows:

- Fault type with user-defined fault impedances
- Main and backup protection assessment
- Backward protection, machine protection, specific transformer treatment
- Pickup and tripping sequences, tripping times, fault clearing times
- User-defined maximum fault clearing time limits and line damage limit checks
- Interactive matrix based total assessment overview with color coding to identify critical settings
- In-depth evaluation of preselected events
- Color coding of results, also in the network diagram
- Enhanced reporting options including Word and List&Label documentation.





Assessment for primary and backup protection for the complete network

Arc-flash

Linked to the evaluation of the protection devices is the simulation of arc-flash hazards. The focus is on the safety of personnel working close to the equipment.

- Arc-flash calculation in accordance with IEEE-1584, NFPA 70E-2012 and BGI/GUV-I 5188
- Support of empirical formulas for 208V to 15 kV, Lee method etc.
- Theoretical model for any voltage to cover any equipment
- User-defined protection devices
- Several options for incident energy calculation (meshed systems)

- Calculation of arcing-current energy
- Automated preparation of Arc-flash labels with flash protection boundary, Personal Protective Equipment (PPE) category and work permits

 WARNING 			
Arc Flash and Shock Hazard Appropriate PPE Required			
Arc Flash Boundary	6 in	Limited Approach	60 in
Incident Energy	0,4 cal/cm ²	Restricted Approach	26 in
PPE due to NFPA 70E	Category 0	Prohibited Approach	7 in
Untreated Cotton		Note that a hard hat with full-face shield and the appropriate gloves are required also	
Bus: K1, Rated Voltage: 10,00 kV			

Siemens Industry, Inc.

Siemens Power Technologies International
400 State Street
P. O. Box 1058
Schenectady, NY 12301-1058 USA

Subject to change without prior notice.

All rights reserved

Printed in the USA

©2017 Siemens Industry, Inc.

The technical data presented in this document is based on an actual case or on as-designed parameters, and therefore should not be relied upon for any specific application and does not constitute a performance guarantee for any projects. Actual results are dependent on variable conditions. Accordingly, Siemens does not make representations, warranties, or assurances as to the accuracy, currency or completeness of the content contained herein. If requested, we will provide specific technical data or specifications with respect to any customer's particular applications. Our company is constantly involved in engineering and development. For that reason, we reserve the right to modify, at any time, the technology and product specifications contained herein.