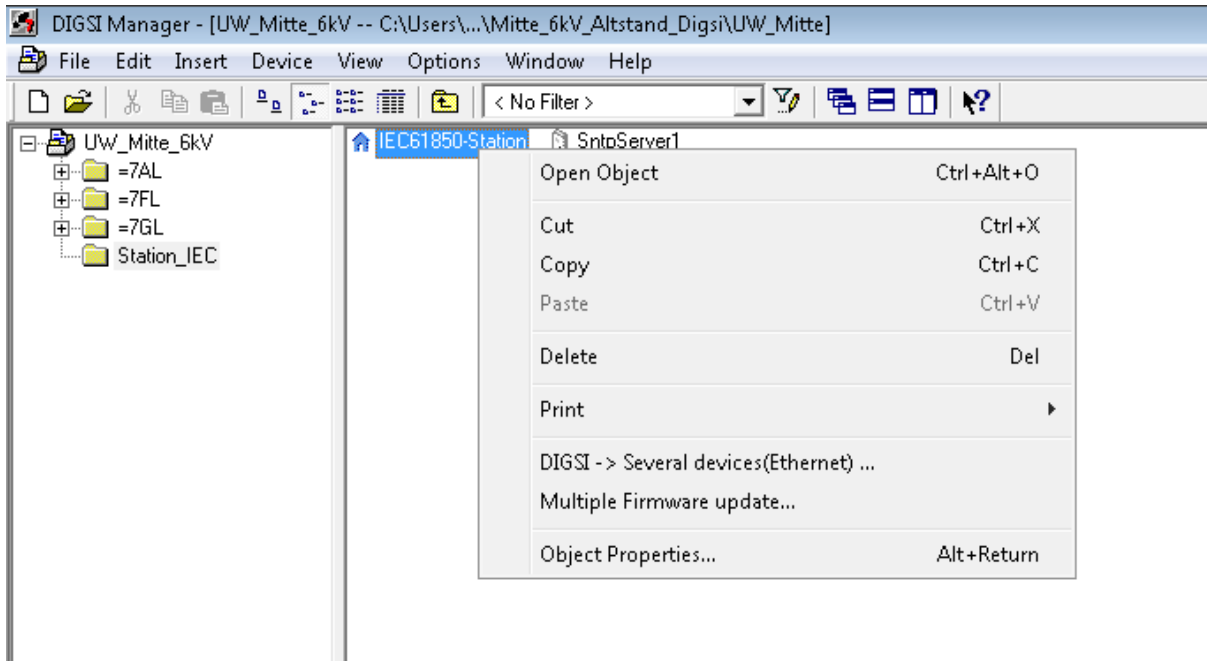


Guideline for upgrading DIGSI 4 projects to DIGSI 4 V4.90

Note: Archive the projects created with versions earlier than V4.89 before upgrading.

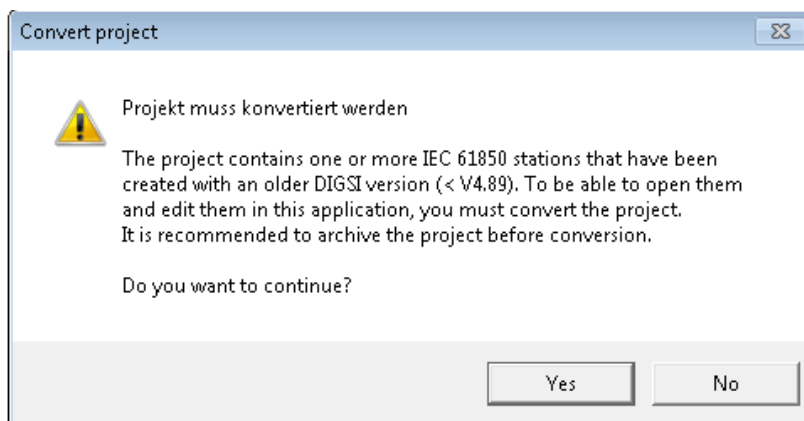
Step 1:

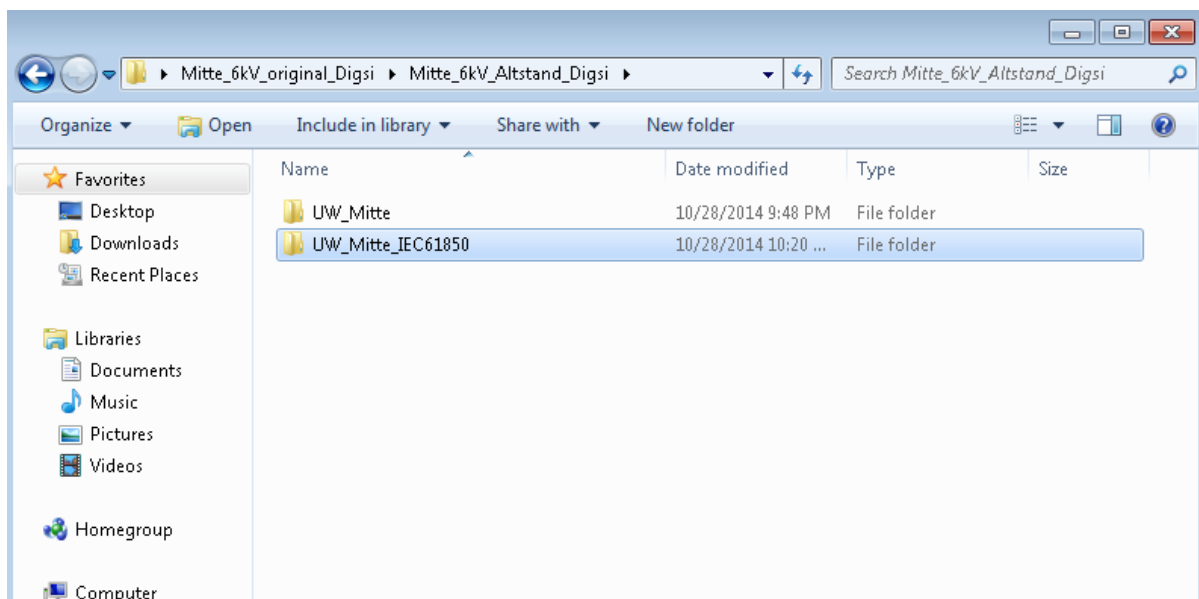
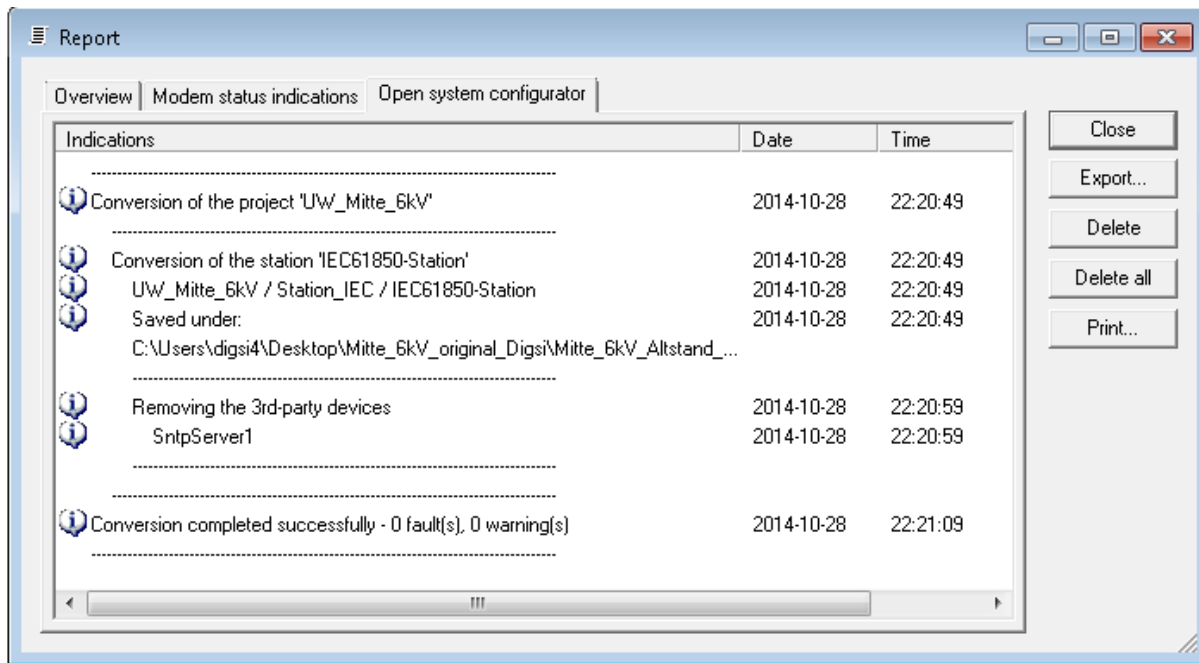
In DIGSI 4 V4.90 open the project and right-click **Station Properties (Use this way to convert)**. This shows the **Convert Project** message for projects created with versions earlier than V4.89.



Select **Yes** to convert the project. During conversion, all 3rd party files are removed from the DIGSI Manager and are included in the IEC 61850 System Configurator.

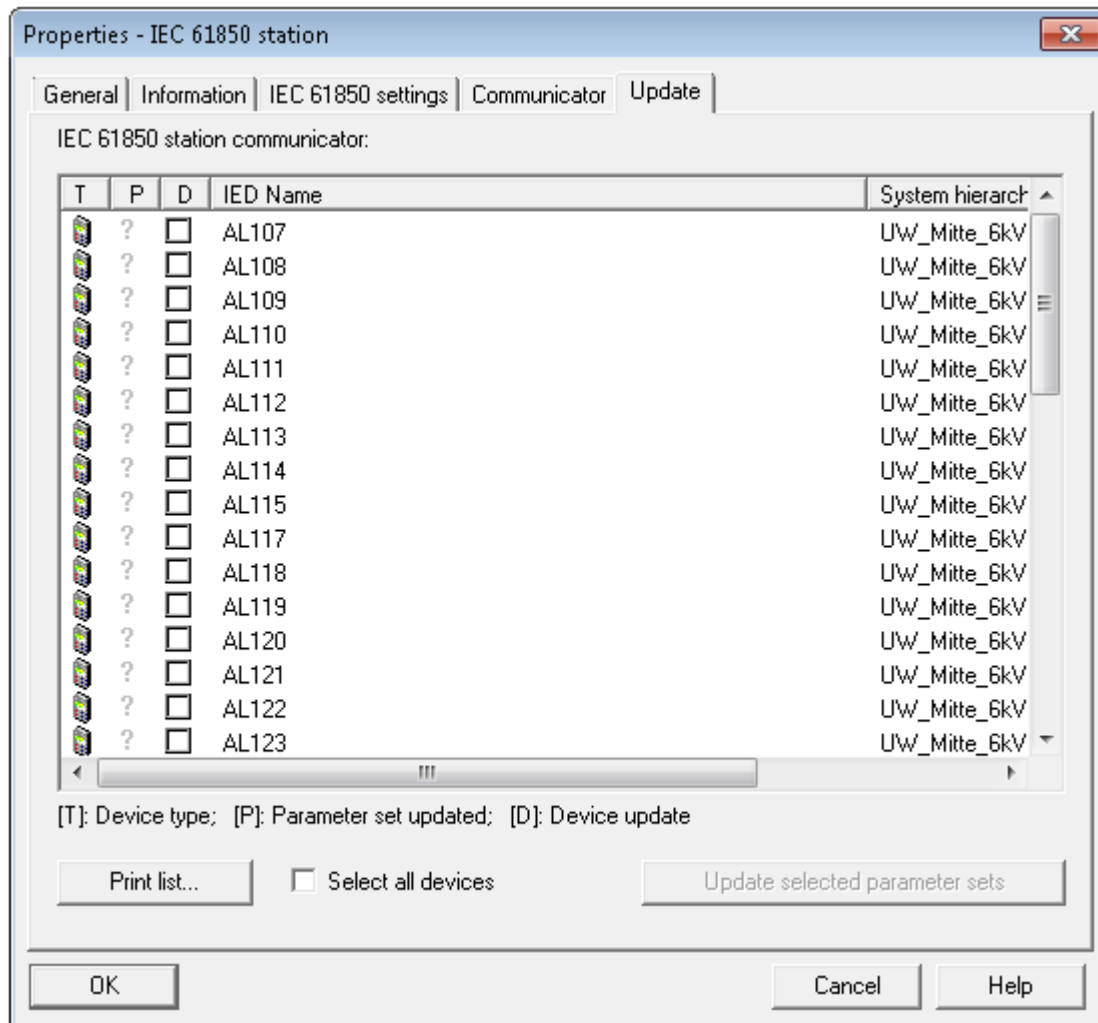
New IEC 61850 System Configurator project folder with "<Project name>_IEC61850" is created along with DIGSI project folder.





Once the project is converted, Station update status in the properties of station shows as follows:

- "Update selected parameter sets" is disabled
- Parameter set updated status is "?"

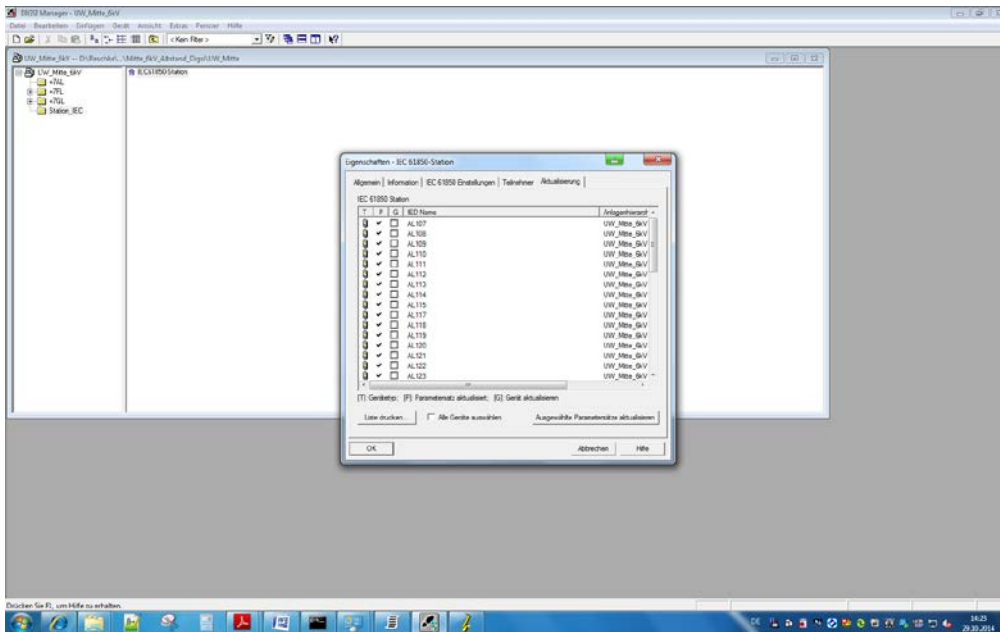


Note:

Only devices added in DIGSI4 Manger are shown in **Update** (3rd party devices are not shown).

Step2:

Open and close the IEC 61850 station.



In DIGSI 4 V4.90, the parameter set is updated only for the required device. This is notified to the user as under column [D].

Note:

If the device update is set by DIGSI (), you cannot clear the check box manually.
If the device update is not set by DIGSI, you can manually select the device for parameter set update by selecting the check box .

➔ Now the project is successfully upgraded and ready for use.

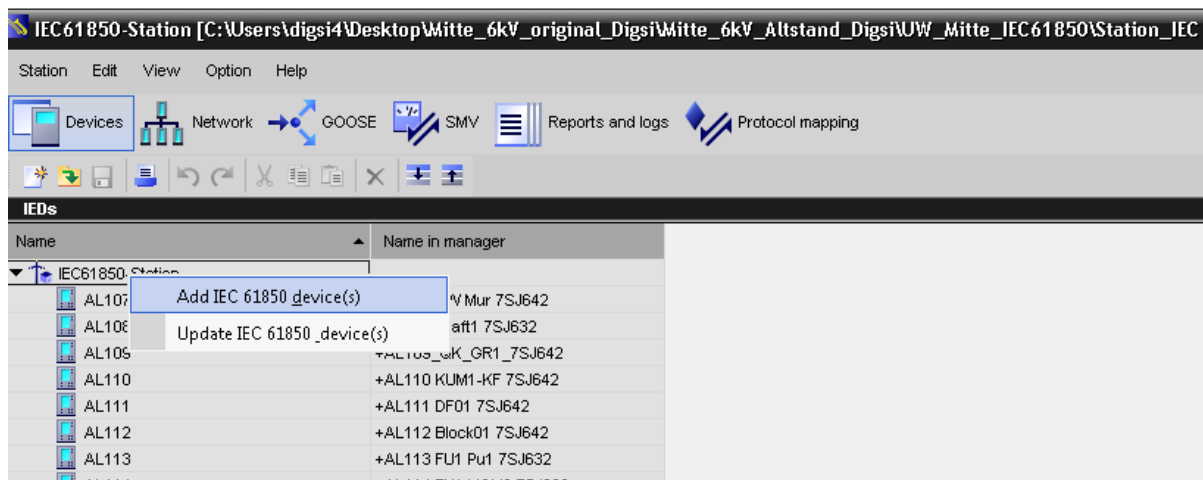
Changed workflow

Adding or Updating 3rd Party Device(s)

3rd party devices are added or updated only in the IEC 61850 System Configurator.

In order to add or update 3rd party devices, proceed as follows:

1. Open the IEC 61850 System Configurator.
2. Navigate to **Devices** editor.
3. Right-click the station in the Devices editor or select **Station > Import** from the menu bar.
4. Select **Add IEC 61850 device(s)** to add device(s) or **Update IEC 61850 device(s)** to update existing 3rd party device(s).



Note: Device(s) can be added or updated from IID, ICD and SCD files.

Known issues

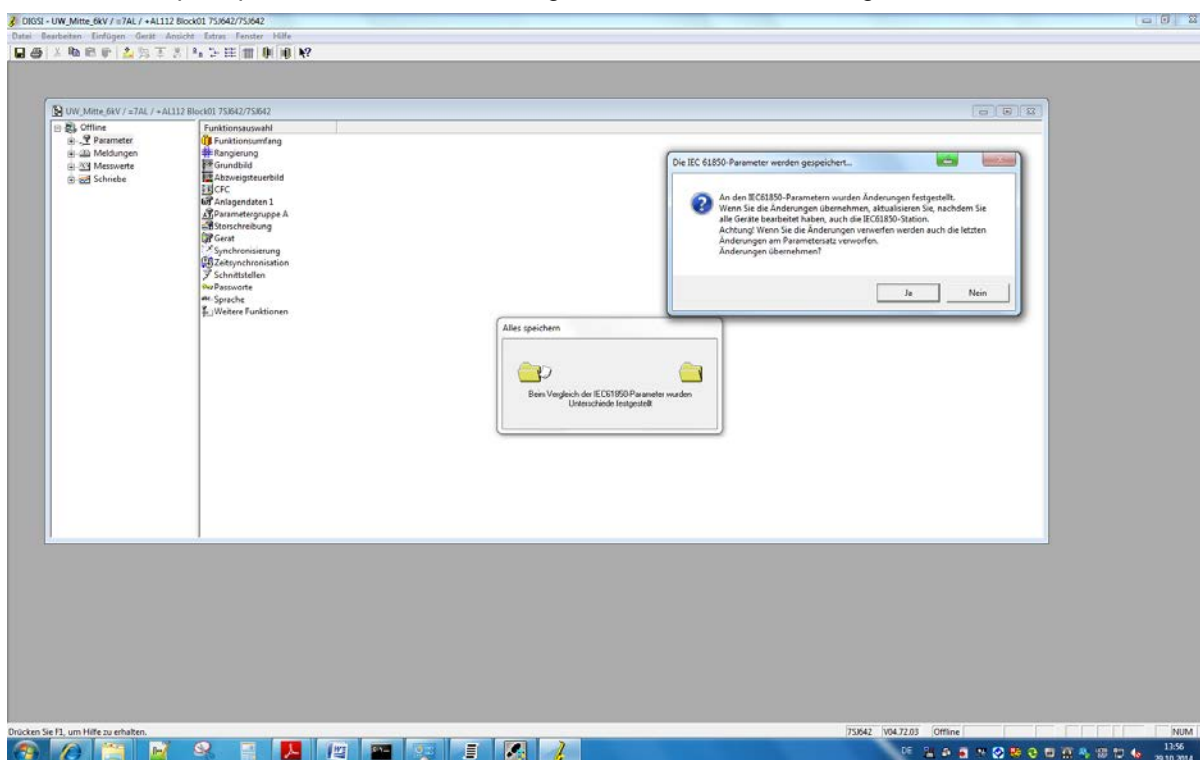
Upgrading from DIGSI 4 versions previous to V4.86:

When upgrading from DIGSI 4 versions previous to V4.86, Siemens recommends updating all Parametersets and loading the devices afterwards.

Performing non IEC 61850 relevant changes:

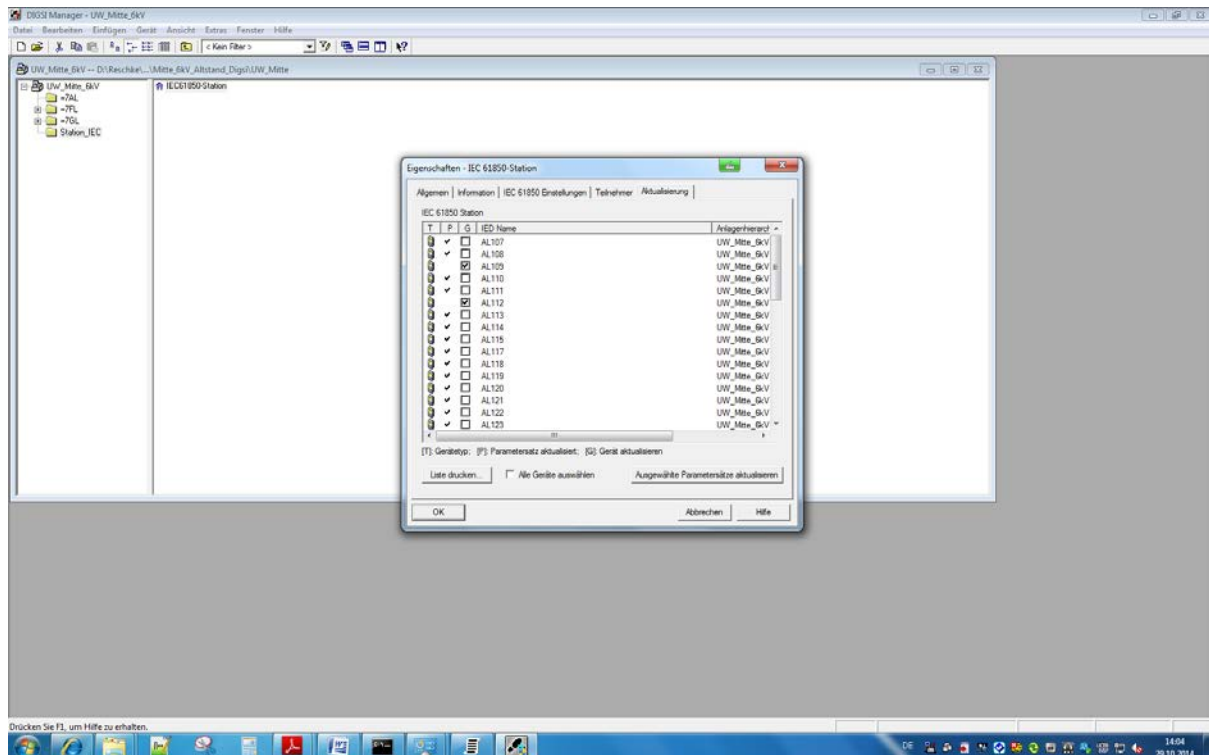
Note: It is recommended to make all changes in the Offline Configuration.

1. Perform a non IEC relevant change (E.g. a Routing to LED).
2. Save Device
3. You are prompted to take over the changes to the IEC 61850 configuration



Note: This occurs only for the first time you perform a non IEC 61850 relevant change.

4. Answer the dialog with yes and close the device.
5. To get the configuration into the device, you have to open and close the IEC 61850 station like in former DIGSI versions.
6. All devices, which are connected to the modified device via Goose, have to be updated. Check the Properties of the station to see which devices are marked as "to be updated".
 - ➔ Note: When closing the IEC 61850 station, a process is started, that checks which devices have to be updated. This may take up to a few seconds during which the Properties dialog is grayed. So if you opened the dialog too fast, close and reopen it to make sure the displayed status is up to date.



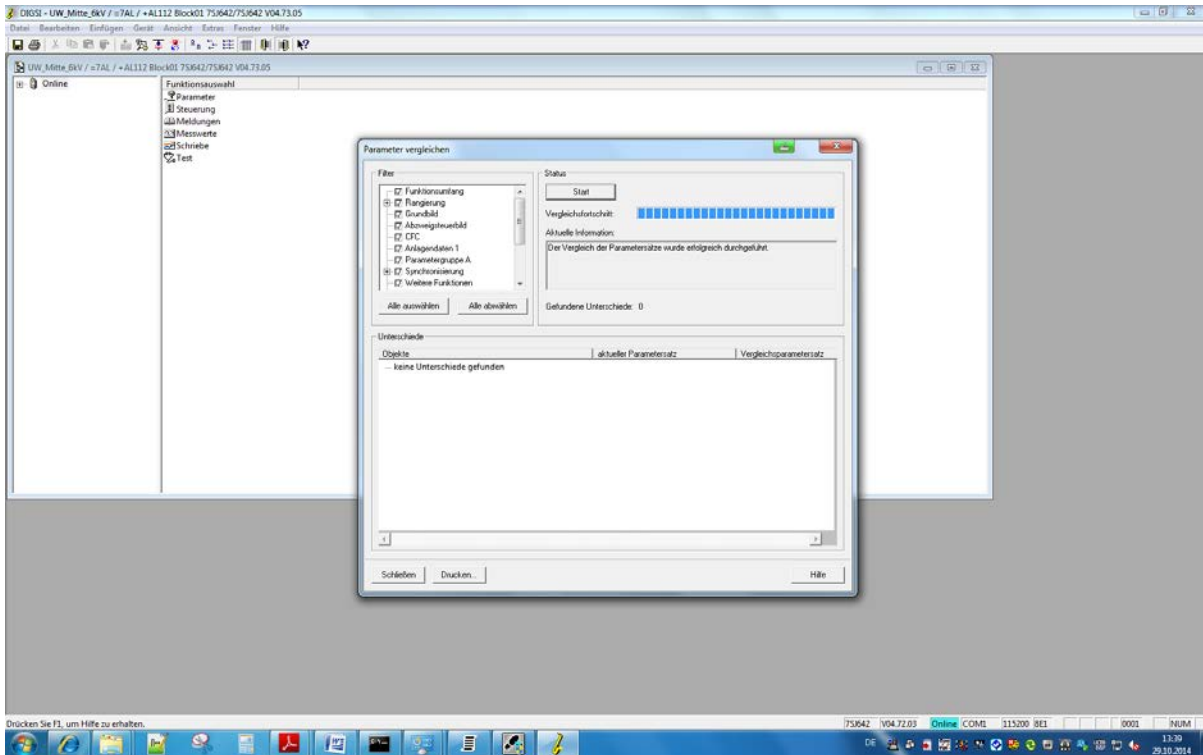
7. Update the selected Parametersets and load the corresponding devices. Additionally the devices have to be updated in SICAM PAS.

Location of the IEC 61850 System Configurator project

1. The IEC 61850 System Configurator project must not be located inside the DIGSI project itself. Otherwise this can lead to inconsistencies. Siemens recommends saving the projects side-by-side.
2. After moving a System Configurator project, open this IEC 61850 station from within the associated DIGSI project. With this, DIGSI recognizes that the System Configurator project was moved and can update the paths accordingly.

Parameterset compare

1. Open device Online and perform a Parameterset compare.



2. Close the device.
3. Now DIGSI recognizes a change. Answer with **No** if you have done no changes. The detection is wrong.

