

# GOOSE Inspector

© 2012 Berthold Boeser Engineering Consultants

Edition: November 2012

# Table of Contents

	0
<b>Kapitel I Demo</b>	<b>4</b>
<b>Kapitel II Installation</b>	<b>4</b>
1 Installation Overview .....	4
2 System Requirements .....	5
3 Storage Structure of the CD .....	5
<b>Kapitel III Overview</b>	<b>5</b>
1 Description of Functions .....	5
2 Getting Started .....	8
<b>Kapitel IV Program Windows and Operation</b>	<b>10</b>
1 Main Window and Detailed View .....	10
2 Hotkey operation .....	13
3 Siemens Application Monitor (SAM) .....	15
4 SCD Viewer .....	20
5 GOOSE Monitor .....	23
<b>Kapitel V Menus</b>	<b>25</b>
1 File Menu .....	26
2 Mode Menu .....	26
3 View Menu .....	27
4 Settings Menu .....	27
5 Filter Menu .....	28
6 Help Menu .....	28
<b>Kapitel VI Filters</b>	<b>28</b>
1 Output Filters .....	28
2 Input Filters .....	31
<b>Kapitel VII Defining Settings</b>	<b>32</b>
1 Font size, Packet color .....	32
2 Parameters for Network and Log file .....	32
3 SNTP function and parameters .....	33
4 SNMP function and parameters .....	33
<b>Kapitel VIII Circular Buffer Files</b>	<b>36</b>
1 Circular Buffer Files .....	36
<b>Kapitel IX Program and Error Messages</b>	<b>37</b>
1 Program Messages .....	37

---

2 Error Messages .....	37
<b>Kapitel X IEC 61850 Coding</b>	<b>37</b>
1 IEC 61850 Coding .....	37
2 MMS with BER Coding .....	37
3 GOOSE with BER Coding .....	38
<b>Kapitel XI Terms and Abbreviations</b>	<b>38</b>
<b>Kapitel XII Known Properties and Restrictions</b>	<b>40</b>
<b>Kapitel XIII End User License Agreement</b>	<b>43</b>
<b>Index</b>	<b>44</b>

## 1 Demo

Thank you very much for your interest in our program GOOSE Inspector. We ask for your kind understanding that the demo version is subject to the following restrictions:

- After 3 minutes of online operation, the program automatically goes offline and terminates the recording. To start a new recording, a restart of the program is required.
- Neither data nor settings can be saved or exported.
- When reading in a configuration file (SCD or ICD), approximately 40% of the IEDs and 40% of the remaining GOOSE are suppressed by means of a random function. This means that only a limited number of IEDs and GOOSE will be available for test purposes. The representation in the *SCD Viewer* and in the *Siemens Application Monitor (SAM)* is restricted accordingly. About 65% of all GOOSE messages are processed as if they were not included in the configuration file. In order to be able to load another configuration file, a restart of the program is required.

### Initial Test with Demo Data

If it is not possible for you to record data, you can perform an initial test using demo data. The demo.scd and demo.lg6 files are available in the program directory of GOOSE Inspector. Since the demo.scd file is subject to the restrictions described above, it might be necessary to load the file several times in order to be able to view an IED and GOOSE messages in the *SCD Viewer* or the *Siemens Application Monitor (SAM)*. As a next step, you can now load the demo.lg6 file.

## 2 Installation

### 2.1 Installation Overview

The program is executable under Windows XP Professional SP2/SP3 (32 Bit), Windows Vista Business (32 Bit), Windows 7 Ultimate (32/64 Bit)

Administrator rights are required for the installation of the program. The operation of the program, however, is also possible without administrator rights.

### Installation

Uninstall former versions first. Then start the setup file from the folder "Demos". The file name is SetupGOOSEInspector\_Demovx.exe (x is the version number).

Example: SetupGOOSEInspector\_Demov1300.exe = the installation routine for GOOSE Inspector Version 1.3.0.0.

Follow the instructions provided on screen. GOOSE Inspector can be used immediately without a restart of the operating system.

A dongle is required as proof of the license and must not be removed during program execution.

Each time a new **user** starts the program for the first time with his own user ID, the program will create a user-specific data directory "C:\Documents and Settings\**<User>**\ Application Data\GOOSE Inspector Data". This directory contains the user-specific Log and program configuration files (\*.cfg). The directory can be modified by the corresponding user via the following menu in the main program: "Settings | Net interface/ Log... | Data Directory".

Recommended setting: In some cases the font of the *Main Window*, *Detailed View* and *GOOSE Monitor* is slightly fuzzy. To change this, please uncheck the method "to smooth edges of screen fonts" of the operating system. Within Windows XP this option can be found at: Control Panel/Display Properties/Appearance/Effects...

## Uninstallation

Exit the program and use the "Software" utility routine provided by Windows (Start | Control Panel | Software) to uninstall the program.

## 2.2 System Requirements

Component	Minimum	Recommended
Operating system	Windows XP, 32 Bit, SP2/3	Windows XP, 32 Bit, SP2/3
Processor	Single CPU 1,3 GHz	Dual Core CPU 1,6 GHz
RAM	500MB	2 GB
Graphic card	SVGA	WXGA
Network units	Network interface (Ethernet LAN, TCP/IP)	Network interface (Ethernet LAN, TCP/IP)
Interfaces	One USB interface for the dongle	One USB interface for the dongle

Table 1: System requirements

## 2.3 Storage Structure of the CD

Folder	Sub-Folder	Contents
Demos		Setup file and version history
Doku		
	English	English documentation
	German	German documentation

Table 2: Storage structure of the CD

## 3 Overview

### 3.1 Description of Functions

#### Basic Functionality

The GOOSE Inspector monitor program allows you to listen to IEC 61850 substation automation protocol packets via the network.

It is connected to the network via the network interface of your PC.

The IEC 61850 packets are decoded (except GSE and SV), checked, displayed, filtered if required, saved in the Log.lg6 circular buffer file and printed if required. For long-term records, an error log file (Log.er6) and an event log file (Log.el6) can be additionally created.

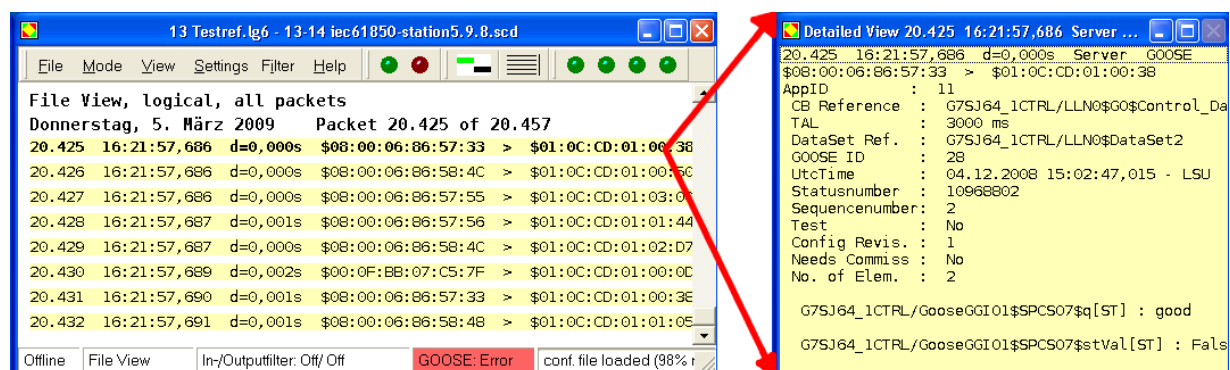


Figure 1: Main Window with packet list and Detailed View

Furthermore, the program monitors the GOOSE transmission via the network and displays the current status in a

comprehensive overview table in the *GOOSE Monitor*. Some specific information, such as the current sum status of all GOOSE messages, is made available to higher-level monitoring systems via SNMP (Simple Network Management Protocol). Via an integrated SNTP request (Simple Network Time Protocol), the program can automatically synchronize the PC clock.

The import of a configuration file (SCD/ICD) extends the volume of data displayed in the *Detailed View* accordingly. In addition, various views of the data structure of the IEDs, GOOSE messages, inputs, reports and IdName are available when loading a configuration file. The program supports SCD files of edition 1.0 and 2.0.

Operators of Siemens systems will be able to benefit from a particularly well arranged representation in the *Siemens Application Monitor* (hereinafter referred to as the "SAM"). This view shows the current status of applications and GOOSE via icons highlighted in traffic-light colors.

Furthermore, the *SAM* allows the export of a signal list which provides a clear overview of the source and target of a connection. The user has the option of creating a signal list for the systematic checking and documentation of signals step by step.

The program supports the import of FAST files. This allows a detailed analysis of the GOOSE communication in special feeder systems from Siemens.

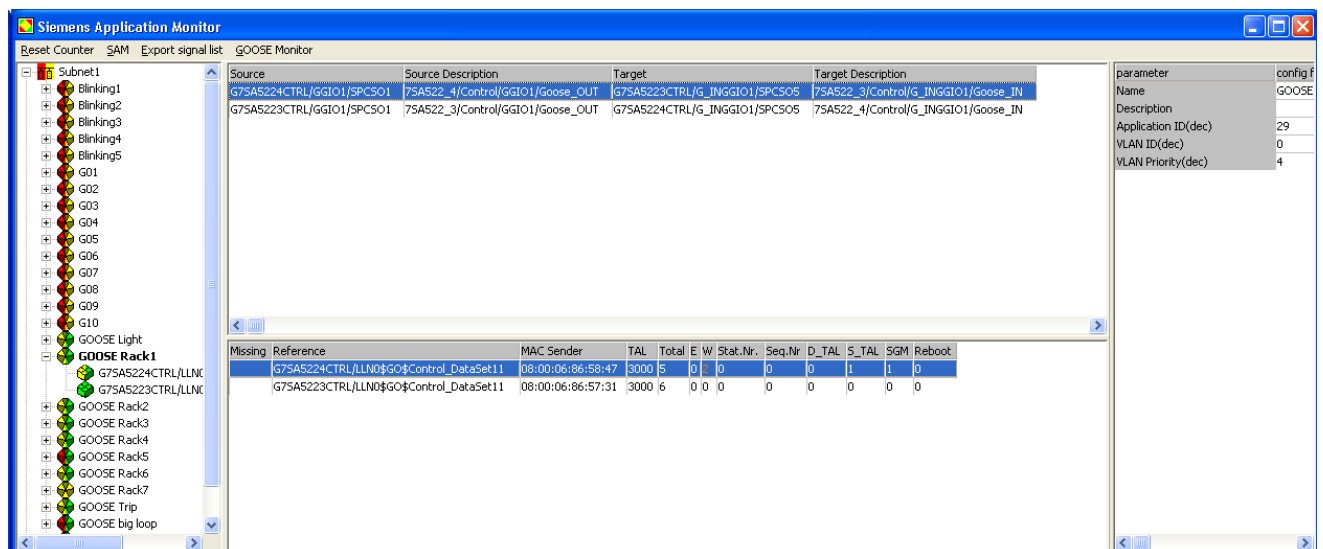


Figure 2: *Siemens Application Monitor (SAM)*

## User-Specific Data Directory

Each time a new **user** starts the program for the first time with his own user ID, the program will create a user-specific data directory "C:\Documents and Settings\**<User>**\ Application Data\GOOSE Inspector Data". This directory contains the user-specific Log and program configuration files (\*.cfg). The directory can be modified by the corresponding user via the following menu in the main program: "Settings | Net interface/ Log... | Data Directory".

When exiting the program, the parameter settings, the representation settings and the Log.lg6 circular buffer file are saved automatically. The files Log.er6 (error log file) and Log.el6 (event log file) are saved automatically too, if activated.

## Properties of the Log.lg6, Log.er6 and Log.el6 circular buffer files

The program checks the packets received for formal correctness. Erroneous or unknown packets are marked accordingly. With inactive input filter, all received packets are marked with a time stamp and saved in the circular buffer file Log.lg6.

---

The maximum size of the Log file and the data directory can be specified via parameter settings (see Parameters for network and Log file ). The program always uses the "Log.lg6" file for recording.

You can also display, filter and scroll up and down the Log file during reception. The use of this option is recommended mainly for the real-time analysis of GOOSE errors during a recording phase.

Observe the recommendations concerning the maximum size of the circular buffer file and do not run or operate any other program on your PC during a recording session.

The Log.er6 (error log file) and Log.el6 (event log file) circular buffer files are stored in the same directory as the Log.lg6 file. They are created during the recording process and can only be used upon completion of a record. Since only specific information is recorded, the circular buffers are sufficiently dimensioned for long recording periods and thus allow the long-term recording of specific information.

For more detailed information, refer to Chapter Circular buffer file .

## Colors and Filters

You can define the display colors for the server and the client using the related menu options in the Font size, Message color menu. The input filter can be used to reduce the amount of data, that should be recorded. For the output of the packets, you can apply the following filtering criteria:

- Time
- Packet status and Packet source
- Packet type
- IP address (MMS)
- Any text (e.g. logic device, logic node or reference)
- GOOSE Control Block Reference
- Packet number and packet length.

By entering the designations of the logic device and logic node in plain text and selecting MMS at the same time, you can e.g. specifically filter those reports which include relevant switching states and measured values.

The GOOSE Control Block Reference can also be set by means of a simple right click in the *GOOSE Monitor* and the *SAM*. This facilitates the GOOSE analysis.

## 3.2 Getting Started

### Dongle

Plug the dongle into the USB interface and start the program.

### Language

Via the “Settings | Language” menu, you can select the English or German user interface. The default setting depends on the current system language and is either German or English.

### Network Connection

Although the program does not send any data packets, you should ensure that your computer cannot cause address conflicts in the network. For safety reasons, contact the administrator with regard to the correct procedure, e.g. automatic reference of the IP address or use of a specific IP enabled for you.

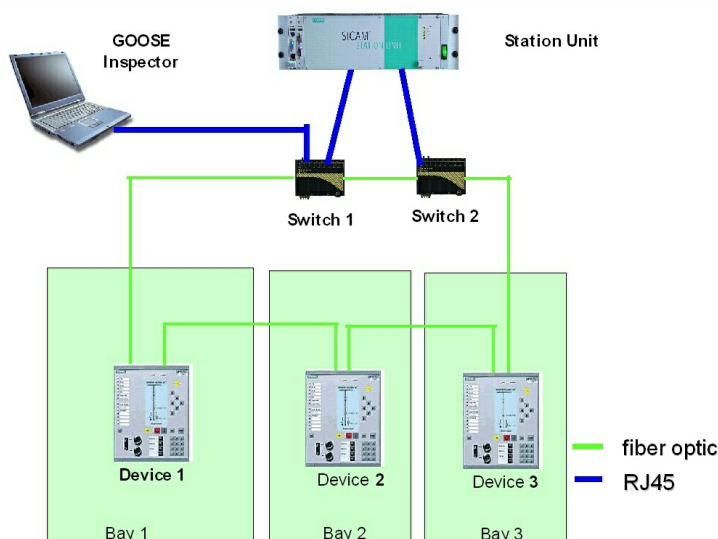


Figure 3: Schematic representation of the network structure



If you plug the network connector of your PC into a normal port of a switch, you will mainly receive GOOSE messages. MMS services or general data traffic will not be forwarded to your PC via a normal switch. This can be useful if you want to focus on the reception and analysis of GOOSE messages.

In order to listen to all packets, plug the network connector of your PC into the service port (monitor or mirror port) of a switch whose parameters have been specified accordingly. Make sure that the packets which you want to listen to (i.e. TCP/IP and multi-cast GOOSE packets) are actually transmitted via the port. You can also interconnect a switch with a mirror port (or HUB or TAP) into a device connection. A conventional unmanaged switch is not suitable because it only forwards the MMS packets to the target addresses.

Before starting the recording, select the desired network card in the menu: "Settings / Network/Log... ". Next, click on OK to save the parameter settings.

## Loading the Configuration File and Starting the Recording

If you have a configuration file (SCD/ICD) for your system, you should already load it before the first recording session. You can also perform a recording without loading a configuration file and have it analyzed afterwards based on the configuration file.

Load a configuration file via the following menu: "File | Open...". Select and confirm the subnet you are connected to (only in case of SCD edition 2.0 with more than one subnet). Select "Reset error counter for a new capture". Operators of Siemens systems can now open the *Siemens Application Monitor (SAM)* via the View menu.

Next, select the "Online View" view (View menu).

Select "All packets" (View menu).

Afterwards, go online (Mode menu). The following selection window opens:

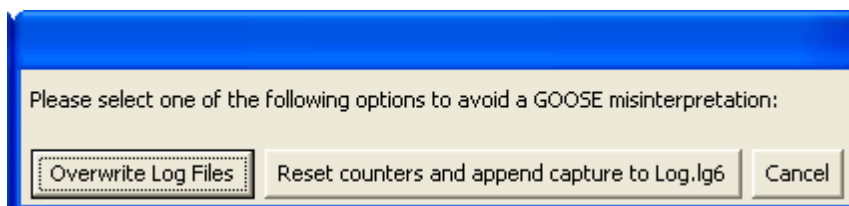


Figure 4: Selection options available at the start of a recording

Select "Reset counters and append capture to Log.lg6".

From now on, all received packets will be saved in the Log.lg6 circular buffer and shown without filtering.

Change the output format of the *Detailed View* using the View menu or the "3 to 6" hotkeys. The current output format is shown in the title bar of the *Main Window*.

Additional display options before and after the recording are described in the Chapter "Program Windows and Operation".

## Possible Error Messages of the Dongle

If "f.n.n.n dongle missing/incorrect" is displayed after selecting the online mode, perform the following checks:

- Were you logged on as an administrator upon the installation of the program?
- Is the dongle plugged into the USB interface?

The f.n.n.n error code has the following meaning:

2, 1011 oder 1034.n.n.n

Dongle not found

1004, 1005 oder 1006.n.n.n

Device driver not installed

## 4 Program Windows and Operation

### 4.1 Main Window and Detailed View

The usual Windows conventions apply for maximizing, minimizing and closing the program windows.

The packets are shown in two windows, i.e. the *Main Window* and the *Detailed View*. In addition, the *GOOSE Monitor* and the *SAM* can be used specifically for GOOSE monitoring. The *SCD Viewer* with its different views is available for the detailed and structured representation of the configuration file.

#### Main Window

The *Main Window* includes the menu bar and shows each packet in a separate line. The following two views are available:

- The "File View" for scrolling already saved packets
- The "Online View" for observing the currently arriving packets in real time

#### The "File View"

The "File View" allows the user to scroll the lg6 file, which has just opened, in order to perform specific analyses of individual packets. This is also possible during a recording session, i.e. the user can scroll the data recorded in the Log.lg6 circular buffer file. The data displayed in this view is influenced by the filter settings.

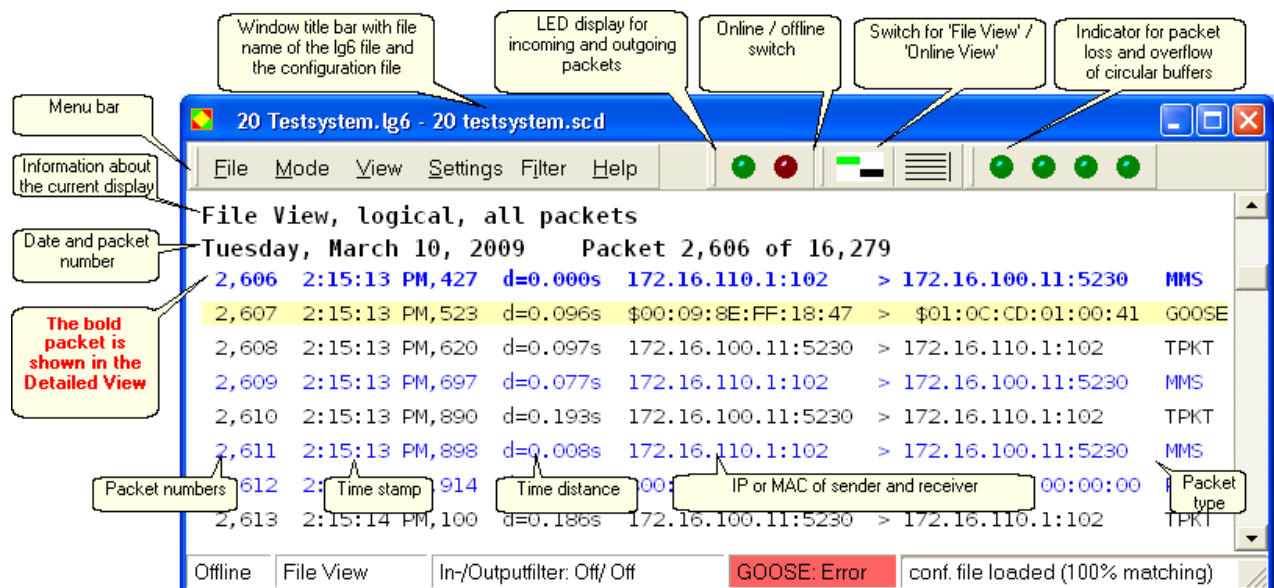


Figure 5: The "File View" in the *Main Window*

Information about the current view is shown in the separate line below the menus. The packet data, the number of the uppermost packet and the total number of packets are shown in the line below.

The following lines include the packet number, a time stamp, the time difference "d" to the packet displayed last, the packet source address, the receiver address (i.e. the MAC or IP address with port) and the packet type.

If a GOOSE contains errors, a short code follows for each detected error as described in Table 13 in the Chapter "GOOSE Monitor".

**The bold packet is shown in the *Detailed View*.**

In order to scroll in the current file, the scroll bar, the cursor keys, the mouse wheel and the hotkeys listed below can be used while the *Main Window* is active.

Operation	Effect
Mouse wheel or cursor keys	1 packet
Page Up/Down keys	5 packets
Page Up/Down keys + SHIFT	50 packets
Page Up/Down keys + Ctrl	500 packets
Page Up/Down keys + Ctrl + SHIFT	5000 packets
End	Packet received last/most recent packet
Home	Packet received first/oldest packet

Table 3: Scrolling in the *Main Window*

A millisecond counter is used for the time stamp of the packets. Upon each change from Offline to Online mode, and then every 10 minutes afterwards, this counter is synchronized with the PC clock time.

If the packets currently shown in the display are overwritten by the packets received online, the packet received last will be displayed upon the next scrolling.

### The “Online View”

The packets are shown one below the other in a consecutive list in the “Online View”. The packet received most recently is shown in the bottom line of the list. The data displayed in this view is influenced by the filter settings.

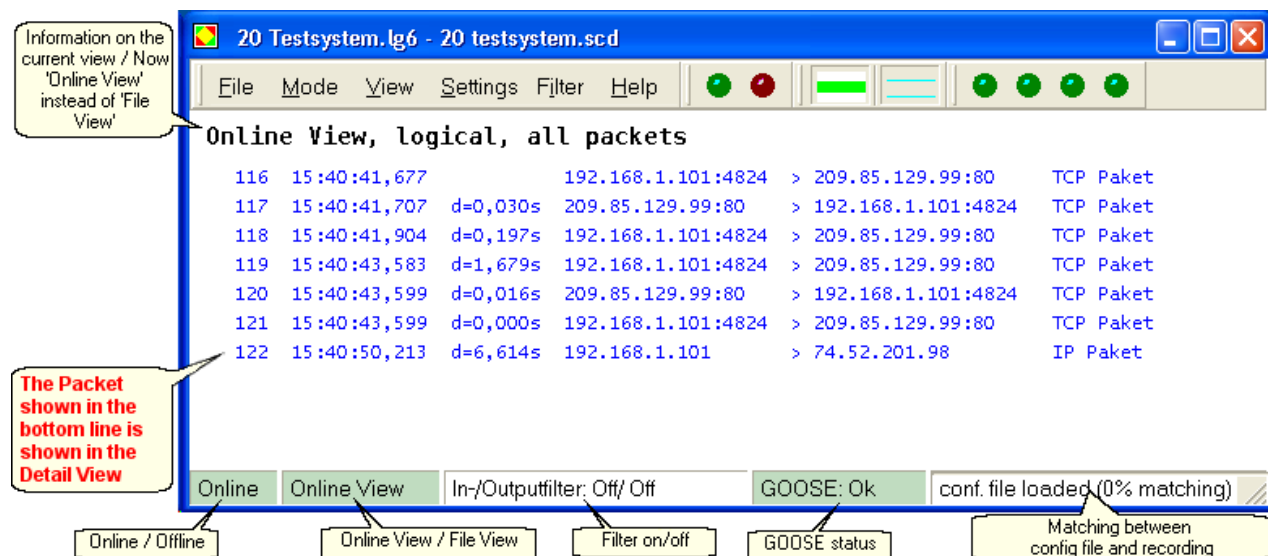


Figure 6: The “Online View” in the *Main Window*

Information about the current view is shown in a separate line below the menus.

The following lines have the same structure as in the “File View”.

The packet shown at the bottom of the list will be displayed at intervals of approx. one second in the *Detailed View*. In case of events happening slowly, e.g. due to an appropriate filter selection for GOOSE or an InformationReport, the values of the attributes can be traced in real time.

In order to carefully view the packets received, press the F9 hotkey to open the “File View”. The display changes and the program continues to receive packets in the background.

## Detailed View

The "current" packet is shown in the selected output format in the *Detailed View*. Select the output format via the View menu or via hotkeys. The View menu can also be called up by clicking with the right mouse button in the *Main Window*.

Using the 'TAB' key, you can switch the focus between the *Main Window* and the *Detailed View*.

The "Logic" and "Details" views can be expanded by activating "SCD" in order to retrieve information from a loaded configuration file.

```

60,517 1:38:38 PM,931 d=0.000s Server MMS
$00:DO:93:11:9E:B8 > $08:00:06:0E:55:91
39.60.56.87:102 > 39.60.56.44:3553

UnconfirmedService: InformationReport
basicVmd-specific: RPT
ReportID: R_ES_2REGDP1/ANCR1$MX
Option fields:
Bit 0-9 : 0111 1000 00
Sequenznumber: UInteger : 0
Time of Entry: 10/15/2007 12:40:13 PM,662
DataSetName: R_ES_2REGDP1/ANCR1$MX
Inclusion bit string
Bit 0-13 : 1111 1100 0000 00

Object: 1
106.303658
Bit 0-12 : 0000 0000 0000 0
15.10.2007 12:40:13,731 - LSU

Object: 2
0.001767
Bit 0-12 : 0000 0000 0000 0
15.10.2007 12:40:13,731 - LSU

Object: 3
2.449757
Bit 0-12 : 0000 0000 0000 0
15.10.2007 12:40:13,731 - LSU

Object: 4
226.043076
Bit 0-12 : 0000 0000 0000 0

```

Figure 7: "Logic" *Detailed View* without SCD

```

60,517 1:38:38 PM,931 d=0.000s Server MMS
$00:DO:93:11:9E:B8 > $08:00:06:0E:55:91
VLAN: no VLAN-TAG
39.60.56.87:102 > 39.60.56.44:3553
Lengths: TPkt=291 data=291 addr=$036 pacl
Session: Typ1=1 Lg1=0 Typ2=1 Lg2=0
Pres.Data: Lg=265 Tag=$A0 Adr=$4C Id=3

UnconfirmedPdu
UnconfirmedService: InformationReport
VariableAccessSpecification: variableListName
basicVmd-specific: RPT
ReportID: R_ES_2REGDP1/ANCR1$MX
Option fields:
Bit 0-9 : 0111 1000 00
Sequenznumber: UInteger : 0
Time of Entry: 10/15/2007 12:40:13 PM,662
DataSetName: R_ES_2REGDP1/ANCR1$MX
Inclusion bit string
Bit 0-13 : 1111 1100 0000 00

Object: 1
Sequence
Sequence
106.303658
Bit 0-12 : 0000 0000 0000 0
15.10.2007 12:40:13,731 - LSU

Object: 2
Sequence
Sequence
0.001767
Bit 0-12 : 0000 0000 0000 0

```

Figure 8: "Details" *Detailed View* without SCD

```

60,517 1:38:38 PM,931 d=0.000s Server MMS
$00:DO:93:11:9E:B8 > $08:00:06:0E:55:91
39.60.56.87:102 > 39.60.56.44:3553

UnconfirmedService: InformationReport
basicVmd-specific: RPT
ReportID: R_ES_2REGDP1/ANCR1$MX
Option fields:
Bit 0-9 : 0111 1000 00
Sequenznumber: UInteger : 0
Time of Entry: 10/15/2007 12:40:13 PM,662
DataSetName: R_ES_2REGDP1/ANCR1$MX
Inclusion bit string
Bit 0-13 : 1111 1100 0000 00

R_ES_2REGDP1/ANCR1$TapAPos$
mag[Mx]
f : 106.303658
q[Mx] : good
t[Mx] : 15.10.2007 12:40:13,731 - LSU

R_ES_2REGDP1/ANCR1$SeqV$
mag[Mx]
f : 0.001767
q[Mx] : good
t[Mx] : 15.10.2007 12:40:13,731 - LSU

R_ES_2REGDP1/ANCR1$SeqVAng$
mag[Mx]
f : 2.449757
q[Mx] : good
t[Mx] : 15.10.2007 12:40:13,731 - LSU

```

Figure 9: "Logic" *Detailed View* with SCD

```

60,517 1:38:38 PM,931 d=0.000s Server MMS
$00:DO:93:11:9E:B8 > $08:00:06:0E:55:91
VLAN: no VLAN-TAG
39.60.56.87:102 > 39.60.56.44:3553
Lengths: TPkt=291 data=291 addr=$036 pacl
Session: Typ1=1 Lg1=0 Typ2=1 Lg2=0
Pres.Data: Lg=265 Tag=$A0 Adr=$4C Id=3

UnconfirmedPdu
UnconfirmedService: InformationReport
VariableAccessSpecification: variableListName
basicVmd-specific: RPT
ReportID: R_ES_2REGDP1/ANCR1$MX
Option fields:
Bit 0-9 : 0111 1000 00
Sequenznumber: UInteger : 0
Time of Entry: 10/15/2007 12:40:13 PM,662
DataSetName: R_ES_2REGDP1/ANCR1$MX
Inclusion bit string
Bit 0-13 : 1111 1100 0000 00

R_ES_2REGDP1/ANCR1$TapAPos$
mag[Mx]
f : 106.303658
q[Mx] : good
t[Mx] : 15.10.2007 12:40:13,731 - LSU

R_ES_2REGDP1/ANCR1$SeqV$
mag[Mx]
f : 0.001767
q[Mx] : good
t[Mx] : 15.10.2007 12:40:13,731 - LSU

```

Figure 10: "Details" *Detailed View* with SCD

When the *Detailed View* is active, the user can scroll the packets of the current file from this view. It is not necessary to change to the *Main Window*.

Operation	Effect
Ctrl + cursor keys	1 packet
Ctrl + Page Up/Down keys	5 packets
Ctrl + End	Packet received last/most recent packet
Ctrl + Home	Packet received first/oldest packet

Table 4: Scrolling in the *Main Window* while *Detailed View* is active

If the output of a packet is too large for the *Detailed View*, you can use the scroll bar, the mouse wheel or the cursor keys in order to scroll up and down the *Detailed View*.

## 4.2 Hotkey operation

Although the graphic user interfaces of GOOSE Inspector provide functions which can be operated with the mouse, many functions can be executed faster and more conveniently using hotkeys. For this reason, this chapter provides an overview of the most important hotkeys:

### 'F8' – Select the Online/Offline mode

Press 'F8' to change between Online and Offline mode.

### 'F9' – Select between 'File View' and 'Online View'

Press 'F9' to change between 'File View' and 'Online View'.

### 'F11' – Activate/deactivate the output filter

Press 'F11' to activate or deactivate the output filter.

### 'F12' – Call up the output filter

Press 'F12' to open the dialog for specifying the parameter settings of the output filter.

### '1' – Show all packets

Press '1' to show all packet types.

### '2' – Show only 61850 packets

Press '2' to show only 61850 (MMS and GOOSE) packets. The output filter provides an additional filtering option.

### '3' – Open the “Logic” *Detailed View*

The output in the *Detailed View* only displays the most important data.

### '4' – Open the “Details” *Detailed View*

The output in the *Detailed View* shows more detailed information.

### '6' – Byte-serial HEX display in the *Detailed View*

The output in the *Detailed View* is 'hexadecimal'.

### 'TAB' key to switch between the *Main Window* and the *Detailed View*

Use the TAB key to switch the (input) focus between the *Main Window* and the *Detailed View*.

### 'Cursor Up/Down' to scroll packet by packet (in the *Main Window*)

Use the cursor keys to scroll packet by packet (with the focus in the *Main Window*) or to scroll line by line (with the focus in the *Detailed View*).

### 'Page Up/Down' to scroll 5 packets up or down (in the *Main Window*)

Use the 'Page Up/Down' keys to scroll 5 packets up or down (with the focus in the *Main Window*) or to scroll by ten lines (with the focus in the *Detailed View*).

### 'Ctrl+Page Up/Down' to scroll 50 packets up or down (only in the *Main Window*)

Hold down the 'Ctrl' key and press 'Page Up/Down' to scroll 50 packets up or down.

**'SHIFT+Page Up/Down' to scroll 500 packets up or down (only in the *Main Window*)**

Hold down the 'SHIFT' key and press 'Page Up/Down' to scroll 500 packets up or down.

**'Ctrl+SHIFT+Page Up/Down' to scroll 5,000 packets up or down (only in the *Main Window*)**

Hold down the 'Ctrl' and 'SHIFT' keys and press 'Page Up/Down' to scroll 5,000 packets up or down.

**'Ctrl+Cursor Up/Down' to scroll packet by packet (only in the *Detailed View*)**

Hold down the 'Ctrl' key and press 'Cursor Up/Down' to scroll packet by packet.

**'Ctrl+Page Up/Down' to scroll 5 packets up or down (only in the *Detailed View*)**

Hold down the 'Ctrl' key and press 'Page Up/Down' to scroll 5 packets up or down.

**'Ctrl+D' to delete the current Log file**

The 'Ctrl+D' key combination deletes the current Log file and the GOOSE references.

### 4.3 Siemens Application Monitor (SAM)

Operators of Siemens systems will be able to benefit from a particularly well arranged representation in the *Siemens Application Monitor* (hereinafter referred to as the “SAM”). This view shows the current status of applications and GOOSE via icons highlighted in traffic-light colors.

The complete tree view, the Description area and the Parameters area in the SAM are only available after loading an SCD with special features.

#### Structure of the SAM Window

The SAM window is divided into the following four areas:

- The **tree view** provides a graphical representation of all applications and the GOOSE messages included.
- The **Description area** in the upper center of the screen shows all sources and targets of the node selected from the tree.
- The **GOOSE Monitor** in the bottom center of the screen shows runtime information concerning all GOOSE of the node selected from the tree.
- The **Parameters area** in the far right of the screen compares information from the configuration file and received parameters of the node selected from the tree.

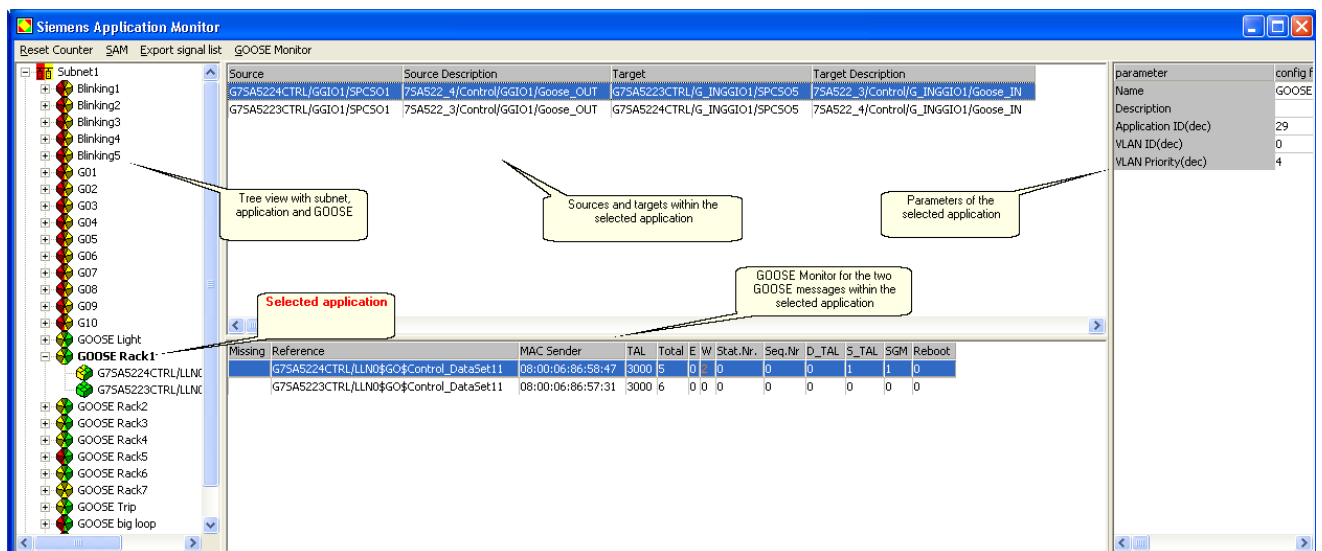


Figure 11: The four areas of the *Siemens Application Monitor* (SAM)

Several menu items are available above the SAM.

- **Reset counter** – Resets all counters for errors and warnings; the left-hand side of the icons is displayed in green.
- **SAM** – Allows the user to hide individual columns of the description area.
- **Export signal list** – Exports an CSV file which includes all sources and targets according to the configuration file.
- **GOOSE Monitor** – Allows the user to hide individual columns of the GOOSE Monitor.

You can sort according to any column in the Description area and the GOOSE Monitor. Place the mouse pointer over the title bar and click with the left mouse button. Clicking again reverses the sorting order. The order of sorting is not displayed.

## Icons and Colors in the Tree View

The following four icons are used in the tree view of the SAM:





	Subnet
	Application
	GOOSE / GOOSE control
	undefined GOOSE

Table 5: Icons in the tree view of the SAM

### Subnet, application and GOOSE

The icons are arranged based on the information included in the configuration file. A subnet is the uppermost level; a GOOSE is the lowest element in the hierarchy.

Siemens applications are created on the basis of private attributes in the SCD.

The assignment of GOOSE to Siemens applications is also performed via private attributes.

All GOOSE which do not have these private attributes are collected in "generated" applications. Each "generated" application only includes GOOSE with the corresponding application ID (AppID, indicated as a decimal number).

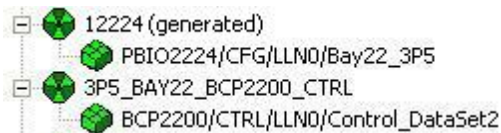


Figure 12: Generated application with AppID=1224 and Siemens application

### Undefined GOOSE

This node displays all GOOSE messages which have been transmitted via the network, but which are not described in the configuration file.

### Colors

Depending on the status of the node or element, the icons are shown in the following colors:













		Configuration file		
		Normal	Warning	Error
Log file	Normal			
	Warning			
	Error			
	Inaktive			

Table 6: Color combinations of the icons in the tree view of the SAM

The color in the left-hand side of the icon shows runtime warnings and runtime errors represented in more detail in the GOOSE Monitor or in the Parameters area.

The color in the right-hand side of the icon shows warnings and errors with regard to the loaded configuration file.

The colors change according to the following rule:





	No warning or error / everything OK
	At least one warning, but no error pending
	At least one error, but warnings may be pending as well
	Element is part of a inactive subnet, therefore no runtime data available

Table 7: Significance of the colors of the icons in the SAM



Since the icons in a level always display the worst state of the icons arranged below, the cause of an error displayed at the uppermost level can be conveniently traced back to a lower level.

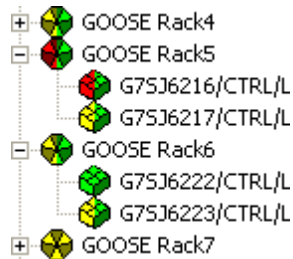


Figure 13: The application always shows the worst property of the GOOSE included

## Representation in the Description area

The Description area shows all the sources and corresponding targets of the node selected from the tree.

A data object with a source description is displayed as source for all devices.

Only for Siprotec devices, a data object with a target description is displayed as target.

For all other devices, the input position (ExtRef) is shown as target. The program complements the ExtRef with an ordinal number. The "Internal Address" (IntAddr) in the field highlighted in gray is indicated as target description.

Target	Target Description
BFP2214CTRL/SYNCGGIO1/SPCSO1	BFP2214/Control/SYNCGGIO1/Request for Check Sync
PBIO2202CON/RBGGIO1/ExtRef (0)	

Figure 14: Target view with Siprotec devices and other devices

## Warnings and Errors Concerning the Configuration File – Right-Hand Side of the Icons

When loading a configuration file, the tree structure is set up and the configuration file is checked. Detailed information on warnings or errors concerning the configuration file is shown by means of an extended tool tip. To show the tool tip, place the cursor on the icon of a GOOSE. The extended tool tip is shown only for GOOSE which appear in yellow or red on the right-hand side!

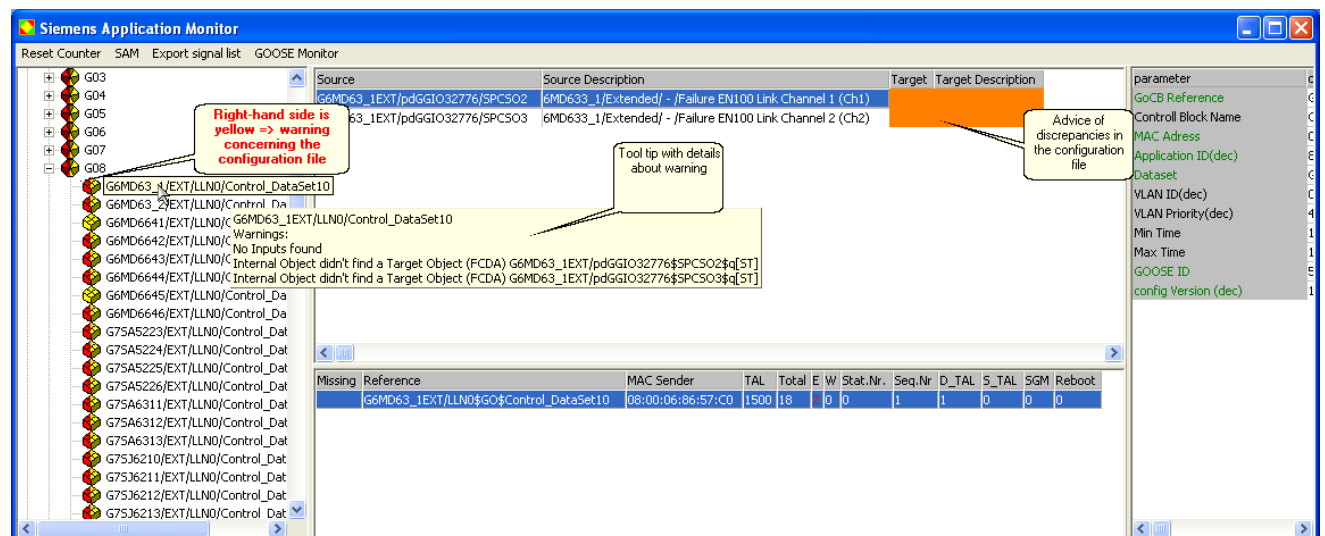


Figure 15: Example for a warning concerning the configuration file

## Warnings and Errors Concerning the Log File – Left-Hand Side of the Icons

Warnings and errors with regard to the Log file are created during a recording session and can have the following two causes:

- The running GOOSE transmission is not free of gaps and inconsistencies.
- The parameters transmitted with a GOOSE differ from the values defined in the configuration file.

Warnings and errors concerning the GOOSE transmission are shown in detail in the **GOOSE Monitor**. Warnings and errors concerning the parameters are shown in detail in the **Parameters area**.

The warnings and details shown in the Parameters area and the GOOSE Monitor directly influence the status of a GOOSE and thus the color shown in the left-hand side of the GOOSE icon.

All icons within an inactive subnet will be displayed with a grey left-hand side.

## GOOSE Monitor (in the SAM)

The information shown in the **GOOSE Monitor** is continuously updated and influences the **color in the left-hand side of the icons**.

Missing	Reference	MAC Sender	TAL	Total	E	W	Stat.Nr.	M	Reboot
	G75J6216CTRL/LLN0\$GO\$Control_DataSet11	00:0F:BB:07:BC:02	1500	18	2	0	0	1	0
	G75J6217CTRL/LLN0\$GO\$Control_DataSet11	00:0F:BB:07:BC:34	1500	19	0	2	0	0	0

Figure 16: Example of a GOOSE with two errors and a GOOSE with two warnings...

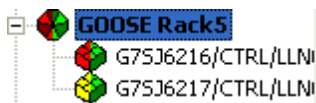


Figure 17: ... and the corresponding representation in the tree view

Column	Function
Missing	Field filled in red => GOOSE currently missing
Reference	Reference of the GOOSE Control Block
MAC Sender	MAC address of the sender
TAL	Time allowed to live
Total	Total number of GOOSE
E	Total number of errors
W	Total number of warnings
Stat.No.	Number of errors caused by the status number
Seq.No.	Number of errors caused by the sequence number
D_TAL	Number of errors caused by at least a double timeout of the permissible Time allowed to live (TAL)
S_TAL	Number of warnings caused by at least a simple timeout of the permissible Time allowed to live (TAL)
SGM	Number of single missing GOOSE (simple sequence number violation)
Reboot	Number of detected reboots (Stat.No. = Seq.No. = 1)

Table 8: Significance of the columns of the *GOOSE Monitor* in the SAM

The *GOOSE Monitor* will be shown greyed if you select a tree view icon from an inactive subnet.

## Parameters Area

The parameters in the **Parameters area** are only captured once per recording phase. Most of the values are

already determined with the first GOOSE. The errors and warnings shown in the Parameters area influence the **color in the left-hand side of the icons**.

parameter	config file	log file
GoCB Reference	G75A5223CTRL/LLN0\$GO\$Control_DataSet11	G75A5223CTRL/LLN0\$GO\$Control_DataSet11
Control Block Name	Control_DataSet11	
MAC Address	01-0C-CD-01-00-05	01-0C-CD-01-00-05
Application ID(dec)	29	29
Dataset	G75A5223CTRL/LLN0\$DataSet11	G75A5223CTRL/LLN0\$DataSet11
VLAN ID(dec)	0	
VLAN Priority(dec)	4	
Min Time	10 ms	
Max Time	2000 ms	2104 ms
GOOSE ID	740	740
config Version (dec)	1	1

Figure 18: Parameters window for a GOOSE

The parameters displayed in green are checked. They change their color in case of discrepancies between the configuration file and the Log file. At the same time, the warning or error will be shown as the status in the tree view. It is possible to deactivate individual check criteria in the "Settings | GOOSE Parameter Checks" menu.

The MAC address here is the virtual receiver address. The sender address is displayed in the GOOSE Monitor.

The VLAN parameters are only evaluated upon their reception.

The minimum and maximum transmission times are calculated from the time stamps of the first suitable GOOSE sequences. They will not be checked against the values of the configuration file.

All other parameters displayed in black are not encoded in the GOOSE and are shown only for information purposes.

The Parameters area will be shown greyed if you select a tree view icon from an inactive subnet.

## Setting Filters for Further Analyses in the Detailed View

If runtime warnings or runtime errors are shown for a GOOSE and have to be further investigated, it is helpful to search the existing record for erroneous packets first and then further examine the correct transmissions which took place before. In the SAM, a filter can be conveniently set as follows:

- In the GOOSE Monitor: by marking the desired GOOSE and clicking with the right mouse button
- In the tree view: by marking the desired GOOSE and clicking with the right mouse button

The following view opens in both cases:

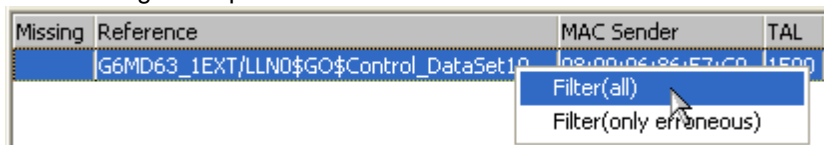


Figure 19: Marking a GOOSE and setting a filter by clicking with the right mouse button

- Filter (all) => Shows all GOOSE packets of the selected GOOSE ControlBlock reference.
- Filter (only erroneous) => Shows only erroneous GOOSE packets of the selected GOOSE ControlBlock reference.

The convenient handling of filters is also supported in the *Main Window*. For more detailed information, refer to the Chapter Output filters.

## 4.4 SCD Viewer

The SCD Viewer shows the contents of a configuration file in the following tree views:

- **IED** shows the data structure of the individual IEDs.
- **GOOSE** shows the data included in a GOOSE and the inputs fed by this GOOSE.
- **Input** shows all external references to the configuration file and the corresponding GOOSE which includes this data.
- **Report** shows the data structure of the individual reports.
- **IdName** shows the data structure of all logical devices with functional naming via the attribute IdName.

In addition to the tree view, the parameters and properties of the selected node are displayed in the information box on the right-hand side.

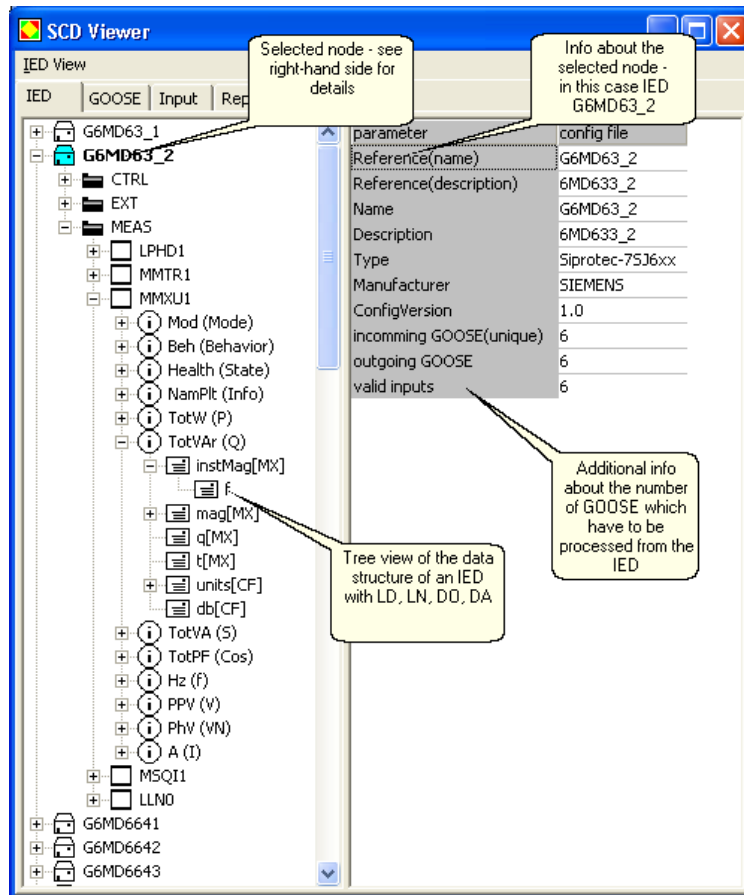


Figure 20: Tree view of the data structure of an IED with additional information concerning the number of GOOSE in the IED

In the IED tree view, the number of GOOSE messages and inputs is shown under IED and LD. The output shown in the IED tree view can be modified by means of the "IED View" menu item.

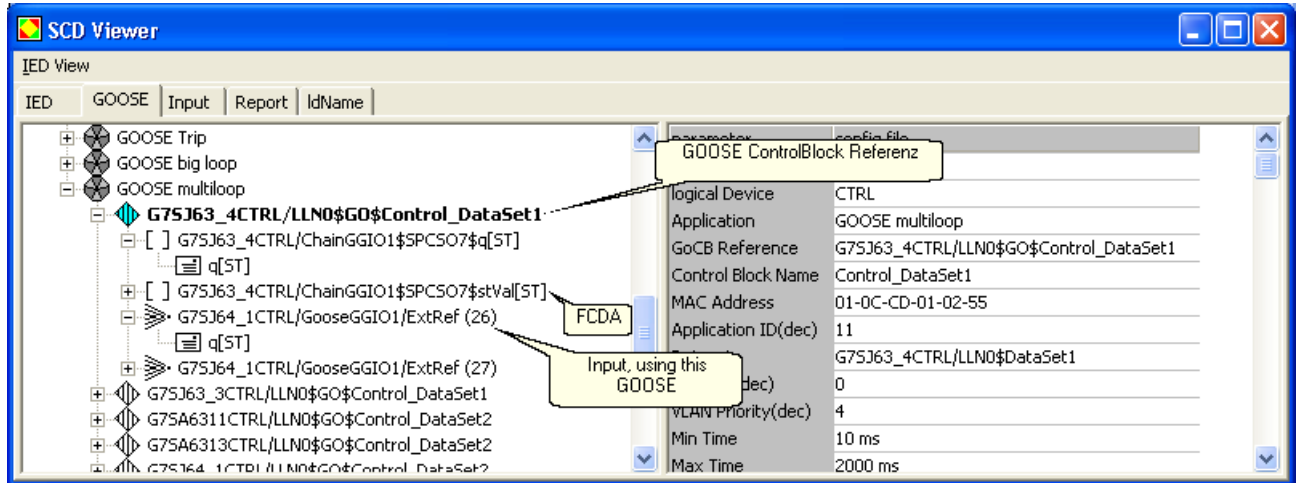


Figure 21: GOOSE (GOOSE ControlBlock reference) with data and inputs included which are using this GOOSE

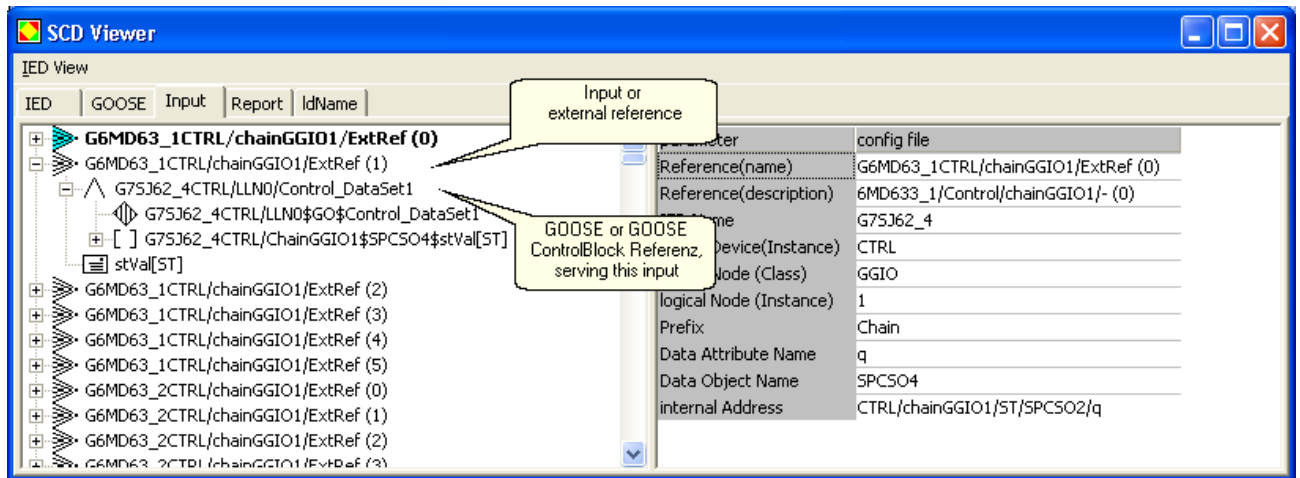


Figure 22: Input (external reference) and GOOSE (GOOSE ControlBlock reference) with the required data (attribute)

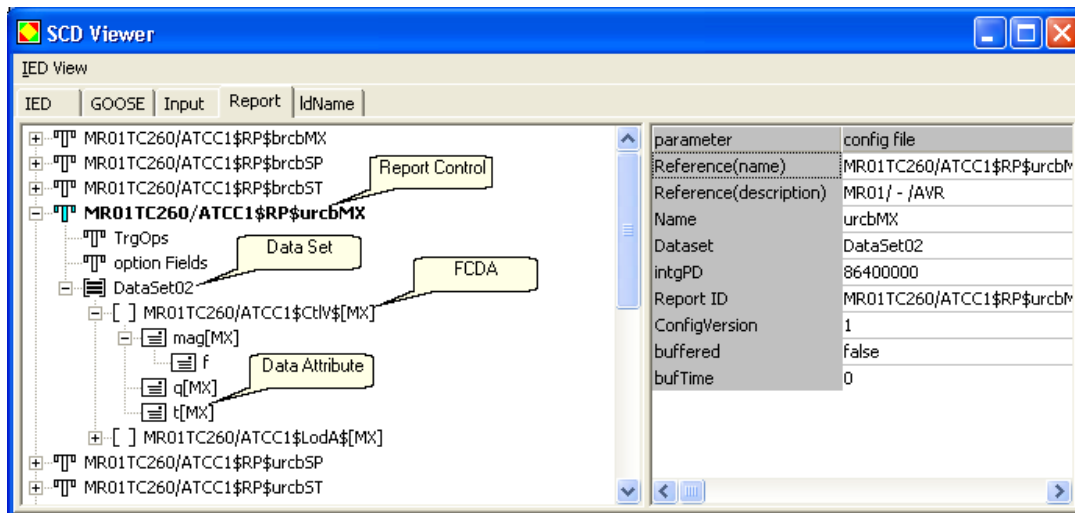


Figure 23: Report with the corresponding DataSet and the data included in the DataSet

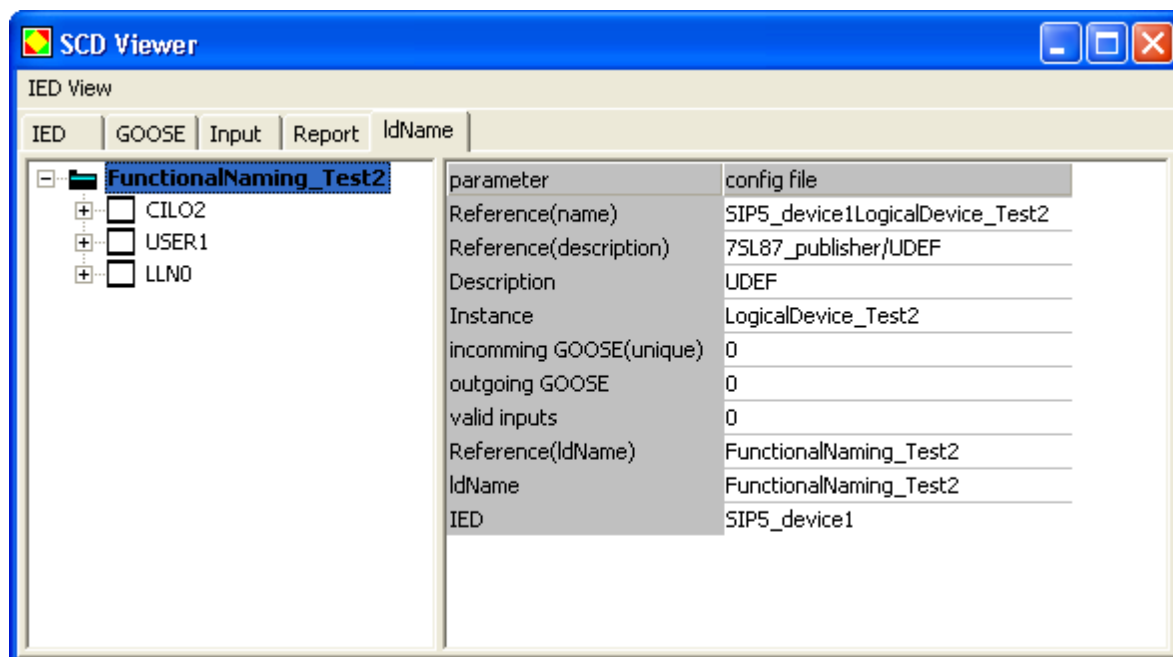


Figure 24: Tree view of the data structure of all logical devices with functional naming via the attribute ldName

## Icons and Colors in the SCD Viewer

	IED
	Server
	Accesspoint
	Logical Device
	Logical Node
	Data Object
	Data Attribute
	Basic Data Attribute
	Report Control
	Trigger Options
	Option Fields
	Data Set
	Functional Constraint Data Attributes (FCDA)
	GOOSE Control
	Input
	GOOSE
	Data Attribute Type
	Data Object Type
	Enumeration Type
	Enumeration Value
	Logical Node Type

Table 9: Icons and their significance in the IED, GOOSE, Input and Report tree views

## 4.5 GOOSE Monitor

The *GOOSE Monitor* allows the user to check the quality of all GOOSE in the connected subnet in real time and to represent it in a comprehensive overview table.

The *GOOSE Monitor* is also available without a configuration file. In this case, however, it can only monitor those GOOSE messages which have been received at least once during a recording session.

During a recording, all GOOSE received are evaluated with regard to their StatusNumber, SequenceNumber and Time allowed to live (TAL). In addition, the complete failure of a GOOSE is monitored.

When a configuration file is loaded, the program additionally checks whether all configured GOOSE actually exist in the network. Furthermore, some parameters of the corresponding GOOSE which was received first are compared with the configuration file.

### Display of the Current Status of a GOOSE

The user can sort according to any column in the *GOOSE Monitor*. Place the mouse pointer over the title bar and click with the left mouse button. Clicking again reverses the sorting order. The order of sorting is not displayed.

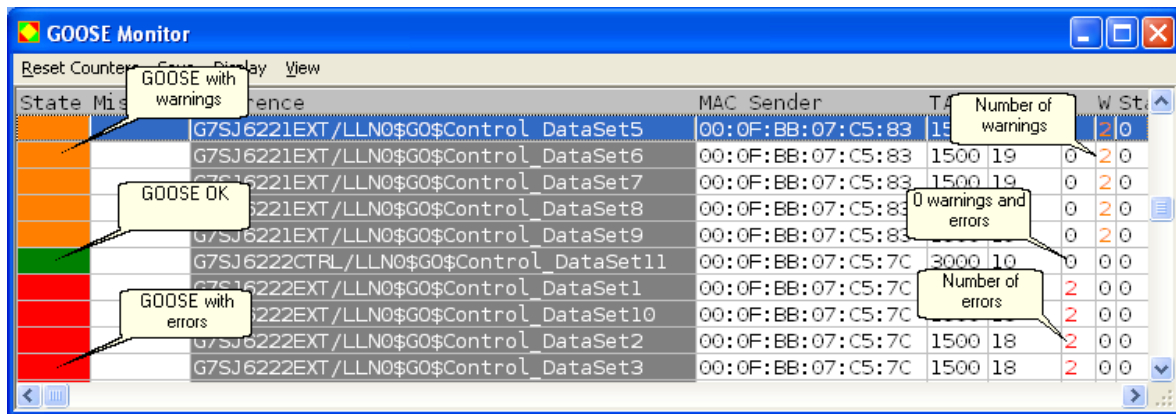


Figure 25: *GOOSE Monitor* with GOOSE examples for the Warning, OK and Error statuses

The status of a GOOSE is defined as follows:

	No warning or errors / everything OK
	At least one warning, but no error pending
	At least one error, but warnings may be pending as well

Table 10: Significance of the colors in the Status field of the *GOOSE Monitor*

The Missing column is defined as follows:

	GOOSE currently received as expected
	GOOSE missing since at least 2 x Time allowed to Live (Missing)

Table 11: Significance of the colors in the Missing field of the *GOOSE Monitor*

If a GOOSE is set to 'Missing' and received again afterwards, 'Missing' is undone. However, all warnings and errors caused by the failure are still shown.

## Table Structure

Colum	Function	Available without configuration file
Status	Green = OK, yellow = warning, red = error	yes
Missing	Field filled in red => GOOSE currently missing	Yes, for GOOSE already captured
Reference	Reference of the GOOSE Control Block	yes
MAC Sender	MAC address of the sender	yes
TAL	Current Time allowed to live	yes
Total	Total number of GOOSE	yes
F	Total number of errors	yes
W	Total number of warnings	yes
Stat.Nr.	Number of errors caused by the status number	yes
Seq.Nr.	Number of errors caused by the sequence number	yes
D_TAL	Number of errors caused by at least a double timeout of the permissible Time allowed to live (TAL)	yes
S_TAL	Number of warnings caused by at least a simple timeout of the permissible Time allowed to live (TAL)	yes
SGM	Single GOOSE Missing - Number of single missing GOOSE (simple sequence number violation)	yes
Reboot	Number of reboots detected (Stat.No. = Seq.No. = 1)	yes
LOG	X = GOOSE included in the file	yes
SCD	X = GOOSE included in the configuration file	yes
GPS	GOOSE parameter status (green, yellow, red)	no
GPE	Number of GOOSE parameter errors (i.e. the GOOSE parameters transmitted do not match the configuration file)	no
GPW	Number of GOOSE parameter warnings (i.e. the GOOSE parameters transmitted do not match the configuration file)	no

Table 12: Significance of the columns in the *GOOSE Monitor without the GOOSE parameter fields*

The status of the GPE and GPW columns depends on the following parameter checks:

Colum	Check of	Warning/Error
GPW: VlanPrio	VLAN priority, no evaluation, if not transmitted	Warning
GPE: VlanID	VLAN priority, no evaluation, if not transmitted	Error
GPE: Goose ID	GOOSE ID	Error
GPE: App ID	Application ID	Error
GPE: DataSet	DataSet	Error
GPE: Conf. Ref.	Configuration Revision	Error
GPE: MAC	MAC Address of Sender	Error
GPE: SCD	is GOOSE in config. File	Error

Table 13: Checked parameters of a GOOSE, with the configuration file loaded

The totals of the warnings and errors are indicated in the GPW and GPE columns.

With regard to the GOOSE parameters, the GPS column shows the overall status in traffic light colors.

It is possible to deactivate individual check criteria in the "Settings | GOOSE Parameter Checks" menu.



The evaluation of the LOG and SCD columns allows the following conclusions if the configuration file is loaded:

LOG	SCD	Possible causes
X		<ul style="list-style-type: none"> <li>• Configuration file not complete</li> <li>• GOOSE with incorrect GOOSE ControlBlock Reference transmitted</li> <li>• Incorrect configuration file loaded or wrong subnet choosen</li> </ul>
	X	<ul style="list-style-type: none"> <li>• Not all devices connected</li> <li>• One device defective</li> <li>• Incorrect configuration file loaded or wrong subnet choosen</li> </ul>
X	X	<ul style="list-style-type: none"> <li>• The transmission and the configuration file match – everything OK</li> </ul>

Table 14: Possible causes for different combinations of the LOG and SCD in the *GOOSE Monitor*

## The GOOSE Monitor Menu

### Save

Saves the current view of the *GOOSE Monitor* as a CSV file under any name.

### View

Allows the user to hide individual columns of the *GOOSE Monitor*.

### Output

Allows the user to select whether he wants to show all GOOSE or only GOOSE with errors.

### Reset counter

Resets all counters for warnings and errors and also the current status.

## 5 Menus

The *GOOSE Inspector* program is operated via menus. To call up the online help for all main menus and dialogs, press the "F1" key (i.e. select the menu and press F1).

The menus and input boxes can be selected via the mouse or the keyboard. The key selection is performed via the "Alt" key **and** an "**access key**". The "access key" is the underlined letter in the menu text (e.g. "D" in the File menu) or in the designation of the input box. With some operating systems, the access key is only shown in the menu text after selecting the menu (by pressing the Alt key).

For frequently used commands (online, offline, view), you can use the related hotkeys, see Hotkey operation. Hotkeys are single keys or key combinations for the direct execution of a command. For example, "Ctrl+D" deletes the packets in the Log file.

Be aware that the Alt key activates the menu selection (a menu is highlighted). When the menu selection is activated, the keyboard shortcuts are **not effective**. Pressing the Alt key again deactivates the menu selection again.

## 5.1 File Menu

Use the commands of the File menu in order to open, save and print files.

Command	Description	Hotkey
Log delete...	Deletes all packets in the Log file and the GOOSE references of the GOOSE monitoring. Resets all counters.	Ctrl + D
Open...	Displays the "Open file" dialog field for opening scd, icd, lg6, er6, el6 and FAST files.	
Save as...	Displays the "Save file" dialog field for saving a 1:1 copy of the current file (e.g. Log.lg6). <u>New packets</u> are principally stored in the Log.lg6, Log.er6 and Log.el6 file.	
Save all as...	Displays the "Save all files" dialog field for saving a 1:1 copy of all log files (Log.lg6, Log.er6 and Log.el6). The corresponding file name is applied to all file extensions.	
Close config file (scd/icd)...	Closes the open configuration file.	
Export...	Displays the "Export file" dialog field. For more detailed information, refer to the next chapter.	
Print...	Displays the "Print file" dialog field. For more detailed information, refer to the next chapter.	
Open log file	Opens the Log.lg6 file in the user-specific data directory	
Open error log file	Opens the Log.er6 file in the user-specific data directory.	
Open event log file	Opens the Log.el6 file in the user-specific data directory.	
Quit	Switches to Offline mode, saves all Log files and the current program version and quits the program.	

Table 15: Functions available in the File menu

### Export

This dialog field serves for the definition of parameters for exporting the currently open file into a text file (for file format lg6, er6 or el6) or a file in the lg6 format (only for file format lg6). Be aware that the output filter and the output format are effective in this context. This allows the user e.g. to save only one specific GOOSE in a separate lg6 file. The export of a text file is performed with all information of the *Detailed view*.

#### Packet output

Select whether the output shall be performed as a text file or an lg6 file.

#### Path and name of file

The complete path, the file name and the corresponding file extension (txt or lg6) must be specified under "Path and file name".

e.g. C:\data\test.txt or C:\data\log.lg6. To start the output, click the OK button.

### Print

Be aware that the output filter and the output format are effective when printing. All information of the *Detailed view* will be printed.

## 5.2 Mode Menu

Use this menu in order to switch the program online/offline.

Command	Description	Hotkey
Online	The program saves listened packets in the current Log file.	F8
Offline	The program does not save any packets.	F8

Table 16: Functions available in the Mode menu

## 5.3 View Menu

In the View menu, you can select the packet type, the output format and the packet source. The selected output format is also used for printing the Log file. [Output filter](#) allows the user to filter the packets.

Commands	Description	Hotkey
All packets	Outputs all packets.	1
Only 61850	Outputs only GOOSE or MMS packets. The display behaves as if an output filter was set to MMS and GOOSE.	2
Logical	The output in the <i>Detailed View</i> is restricted to the most important terms and contents.	3
Detailed	The output in the <i>Detailed View</i> shows more detailed information. In case of an erroneous transmission, Detailed provides additional information concerning the structure of the packets.	4
Reserved	The output of the <i>Detailed View</i> corresponds to the logical output.	5
Byte-ser. Hex.	The output of all bytes of a packet is 'hexadecimal'. The order corresponds to the order received.	6
SCD	The output in the <i>Detailed View</i> includes information from the loaded configuration file.	
File View	Displays the packets of the lg6 file which has just been opened. The user can scroll via the cursor keys or scroll bars, see Hotkey operation.	F9
Online View	The packets received are displayed in consecutive order.	F9
GOOSE Monitor	Opens the <i>GOOSE Monitor</i> .	
GOOSE to Log	All GOOSE references, the number of errors and the total number of GOOSE are added in the <i>lg6 file which has just been opened</i> .	
SCD Viewer	Opens the <i>SCD Viewer</i> which provides a comprehensive view of a loaded configuration file.	
Siemens Application Monitor	Opens the <i>Siemens Application Monitor (SAM)</i> .	

Table 17: Functions available in the View menu

## 5.4 Settings Menu

Use the menu for the selection of the language, size and color of the output, network card, and for the selection of the Log file settings.

Commands	Description
Language	Displays the sub-menu for the language selection.
Font size, packet colors...	Displays the Font size, packet colors dialog for setting the parameters for the font size and the output colors.
Net interface/Log...	This dialog serves for the selection of the network card to be used and for defining the properties and the size of the circular buffer file. See also Parameters for network and Log file.
GOOSE parameter checks	Displays a window for the deactivation or activation of individual check criteria. The settings are <b>not</b> saved at the end of the program. In order to ensure that a modified setting becomes effective, the current log file must be reloaded.
Error log settings	Displays a window for the activation/deactivation and for the selection of the circular buffer size of the error log file. The minimum size is 30MB.
Event log settings	Displays a window for the activation/deactivation and for the selection of the circular buffer size of the event log file. The minimum size is 30MB.
SNTP settings	Displays a window for SNTP activation and parameterization.
SNMP settings	Displays a window for SNMP activation and parameterization.

Table 18: Functions available in the Settings menu

## 5.5 Filter Menu

Use the menu for filtering the packet output on screen and on the printer and for activating and deactivating the output filter.

Commands	Description	Hotkey
Output filter...	Displays the Output filter setting dialog for influencing the output of the packets.	F12
Output filter ON/OFF	Activates or deactivates the output filter if you have defined the output filter. This function allows you to deactivate the filter function without having to redefine the output filter settings.	F11
Input filter...	Display the Input filter setting dialog for influencing the recording in online Mode.	

Table 19: Functions available in the Filter menu

## 5.6 Help Menu

Use the Help menu in order to call up the online help and show the program version.

Commands	Description	Hotkey
Help...	Opens the online help.	F1
About...	Displays the program version.	

Table 20: Functions available in the Help menu

# 6 Filters

## 6.1 Output Filters

The output filter influences the output of packets on screen, via a printer and upon the file export.

The output filter does not influence the recording of packets.

### Filtering during and after a recording session

#### The output filter filters:

1. During the recording: packets for the online view
 

This allows the user to monitor individual packets in the *Main Window* and the *Detailed View* in real time, such as one single GOOSE, an information report or “only erroneous” packets as a quick error overview.
2. During the recording: packets already saved in the Log.Ig6 circular buffer file
 

This allows the user e.g. to filter an already detected error of a GOOSE. In order to avoid the loss of data, however, the recording should be stopped if important events have occurred. Also read the related information in the Chapter Circular Buffer File.
3. After the recording: packets of the current Ig6 file
 

This allows the user to restrict the display of packets in the *Main Window* and the *Detailed View* to those packets which are actually relevant. The filter is also effective for the printing and export of a text or Ig6 file.

### Define output filter settings

Press the F12 hotkey to open the window for defining the output filter settings.

To activate or deactivate the output filter, press the F11 hotkey. The settings of the output filter will be maintained even if it is deactivated.

The filter is active if you have selected at least one criterion and not deactivated the output filter. For more detailed information, refer to the "Filter Menu".

An active output filter is indicated by a related note in the status bar and the "Filtered" note in the title bar of the packet output.

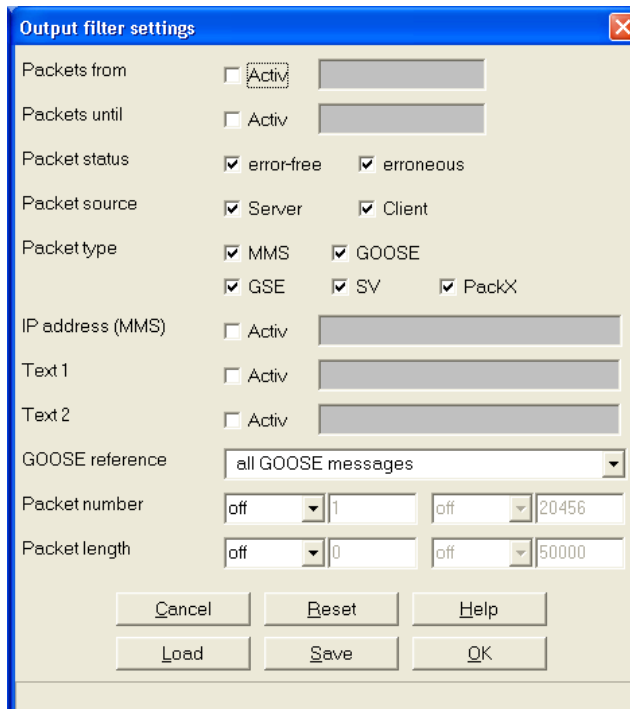


Figure 26: Window for defining the output filter settings

All selected criteria are linked with a logical "and" operation, i.e. all conditions must be met for the packet to be output.

#### **Packets from**

If this checkbox is ticked, only those packets which were received after the specified time are displayed.

#### **Packets until**

If this checkbox is ticked, only those packets which were received before the specified time are displayed.

#### **Packet status**

This parameter defines only error-free or erroneous packets. This filter is not effective if you have marked both fields at the same time or no field at all.

#### **Packet source**

This parameter defines whether packets are output from the server and/or client.

#### **Packet type**

This parameter defines the packet types to be displayed.

- MMS according to 61850
- GOOSE according to 61850
- Detects GSE and SV and displays them in hexadecimal format.
- PackX stands for all remaining packets.

If you select only MMS and GOOSE, this corresponds to the selection of the "Only 61850" view.

This filter is not effective if you have marked all fields or no field at all.

#### **IP address (MMS)**

If you activate this parameter, only packets with this address will be displayed (source or target).

#### **Text 1 or 2**

Displays only those packets which include the text. Since the 61850 references are transmitted in plain text, this option allows e.g. the output of only those packets which concern a logic device. To output only a specific report, enter its Report ID.

### GOOSE reference

All GOOSE ControlBlock references are saved when opening an lg6 file and listening. This option allows you to restrict the output to one single GOOSE. For more detailed information, refer to the following Chapter "Special Filter Functions for Quick GOOSE Analysis".

### Packet number

The packets in the Log file are numbered (1-n). This filter allows you to select a range or just one or two individual packet numbers.

Field 1	Field 2	Field 3	Field 4	Output
equal	500	of	any	Packet 500
equal	500	or	600	Packet 500 and 600
equal	500	to	600	Packets 500 to 600
unequal	500	or	600	All packets except 500 and 600
unequal	500	to	600	All packets except 500 to 600

Table 21: Examples for filtering according to packet number

### Packet length

These boxes allow you to filter packets with a specific length. The input and processing logic is identical with the packet number.

### Save and Load buttons

These buttons allow you to save and load filter settings. The .flt file extension is used.

### Reset button

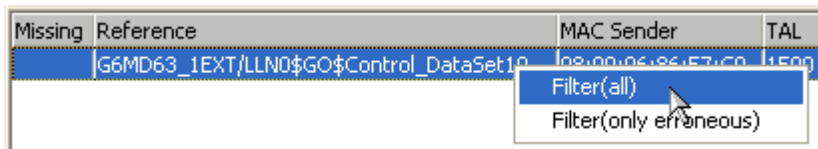
Clicking this button deactivates all filter criteria. This button therefore allows the initiation of an individual filter setting.

## Special Filter Functions for Quick GOOSE Analysis

By clicking the right mouse button, special, context-related filter functions are available for the quick restriction of GOOSE with a warning or error.

1. Select one GOOSE<sup>1</sup> and then click with the right mouse button to activate "Filter (only erroneous)".
2. Switch to the *Main Window* and place the error message to be analyzed at the uppermost position.
3. Next, click with the right mouse button to activate "Filter (all)".
4. Scroll up by one packet in order to view the packet received before the erroneous packet.

<sup>1</sup>The following options are available by clicking with the right mouse button in the *GOOSE Monitor* or in the *SAM* (tree view or GOOSE Monitor window):



- Filter (all) => Shows all GOOSE packets of the selected GOOSE ControlBlock reference.  
 Filter (only erroneous) => Shows only erroneous GOOSE packets of the selected GOOSE ControlBlock reference.

By switching between "Filter (only erroneous)" and "Filter (all)" in the *Main Window*, you can analyze all error messages of the corresponding GOOSE ControlBlock reference. "Output filter ON/OFF" allows the temporary display of all packets in order to detect the larger context of a fault.

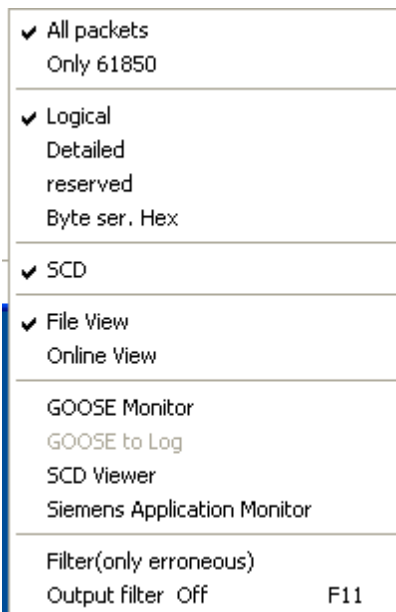


Figure 27: Context-related filtering in the *Main Window*

## 6.2 Input Filters

The input filter defines which package types will be captured or not. Thus it is possible, to reduce the recording to the needed package types only. This reduces the CPU load and the Log file contains more relevant data.

Not captured packages are not in the Log file, are not shown and are not available for a later analysis.

### Define input filter settings

The settings of the input filter can only be changed in offline mode.

There are three different control modes:

- not active**           => All packages will be recorded. This is the default control mode.
- temporary active**   => Only the chosen types of packages will be recorded. A restart of the program will change the control mode to "not active".
- permanent active**   => Only the chosen types of packages will be recorded. A restart of the program will restore the last settings and the control mode will be "permanent active" again.

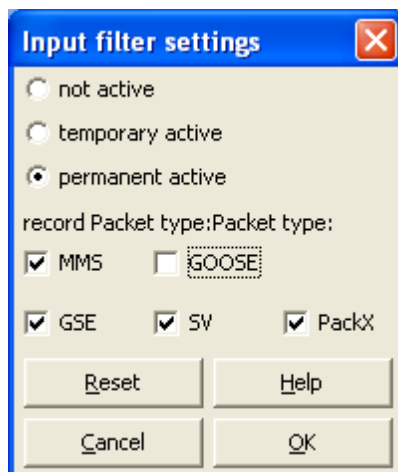


Figure 28: Window for defining the input filter settings

Package types are:

- **MMS**
- **GOOSE** according to 61850
- **GSE** (filtering, but no decoding)
- **SV** (filtering, but no decoding)
- **PackX** stands for all remaining packets.

## Viewing input filter

The status of the input filter and output filter is shown in the footer of the *Main Window*.

In case of a recording with active input filter, there will be a program message at the beginning and end of the Log file.

# 7 Defining Settings

## 7.1 Font size, Packet color

This dialog serves for the definition of the font size and the colors of the packet output. An example of the selected colors is provided in the left-hand field.

The parameters are saved in the "W61850.cfg" file.

### Font size

Select the desired font size.

### Blank line between Messages in %

You can enter values between 0 and 200 percent. Zero means no blank line; 200 means two blank lines. The value only refers to the *Main Window*.

### Server

Select the text color and the background color for the server.

### Client

Select the text color and the background color for the client.

### GOOSE

Select the text color and the background color for the GOOSE.

### Head lines

Select the text color and the background color for the head line. The *Main Window* is filled up by the background color of the head line.

### Error message

Select the text color and the background color for the error and program messages.

## 7.2 Parameters for Network and Log file

In this dialog, you select the network card to be used and define the properties and size of the Log file.

### Network card

Select the desired network card.

### Max. size of Log file [MB]

100MB is the default setting. Define the size in million bytes. Observe the notes provided under **Log file** with



regard to the size and restrictions. The memory capacity indicated here must be available on the hard disk. The minimum size is 30MB.

**Data directory**

In Online mode, the program always saves the new packets in the Log.lg6 circular buffer file stored in the directory indicated here. The error log file log.er6 and the event log file log.el6 are stored in the same directory. In Offline mode, you can save a copy of Log.lg6 under a different name in any directory ("File | Save Log as" menu) or load an existing lg6 file for analysis purposes ("File | Open Log").

## 7.3 SNTP function and parameters

In this dialog field, you activate and define the parameters for the SNTP client (SNTP = Simple Network Time Protocol) which synchronizes the PC system clock.

This function may only be used if no NTP or SNTP service is yet active on the PC.

The SNTP server is requested for the first time when clicking on OK to confirm the dialog. An error message is displayed if a malfunction has occurred.

**General functioning**

At the beginning of the recording and every 10 minutes afterwards, the program requests the current time from a configurable SNTP server. The time of day is always immediately transferred to the PC system time.

Time leaps of up to one second do not visibly effect the time stamp of the data packets. The adjustment is performed seamlessly. Time leaps of more than one second are accepted immediately and documented with a program message in the log file. If this occurs more than twice in succession, the recording is aborted (i.e. the program goes offline) and a program message is written in the log file.

**On/Off**

Activates and deactivates the SNTP client.

**Server**

Enter the IP address of the SNTP server.

**Port**

Enter the port of the SNTP server.

## 7.4 SNMP function and parameters

With this dialog field, you activate and define the parameters for the SNMP agent (Simple Network Management Protocol) which supports the 2c protocol version.

When clicking on Apply or OK in the dialog, all changes are applied immediately, i.e. even if a recording is still in progress. The history memories of already captured SNMP Masters are deleted (see also Multi Master). All settings are saved at the end of the program.

**General functioning**

The SNMP agent responds to the following SNMP requests from an SNMP Master:

- Get
- Walk
- Set (1.3.6.1.2.1.1.x only)

The W6Gl.mib file is located in the installation directory. The file can be opened with a text editor and includes plaintext information on the individual data items.

**Special marker functions**

Since it does not make sense to notify the occurrence of an individual, short-time fault as a permanent, static warning or error, the two data fields behave as markers. They show the status since the last request.

enterprises.34655.10.2.marker.1 = warning

indicates whether one or several new warnings have occurred since the last request. In this case, the value is 10. Otherwise, the value is 01. If the program is offline, the value is 11.

enterprises.34655.10.2.marker.2 = error

indicates whether one or several new errors have occurred since the last request. In this case, the value is 10. Otherwise, the value is 01. If the program is offline, the value is 11.

This means that the two double-point indications show whether any warnings or errors have occurred at all. However, they do not indicate the frequency of occurrence.

The SNMP Master is therefore responsible for recording, signaling and archiving this information in a suitable manner.

**On/Off**

Activates and deactivates the SNMP agent.

**IP address**

Enter the IP address or the name of the connection via which the SNMP agent shall wait for requests.

**Port**

The standard port for listening is 161. You can change the port in order to avoid conflicts with other agents (e.g. the Windows SNMP agent).

**Multi Master**

For special marker functions, the program must record the history of each requesting SNMP Master. It must be possible to distinguish all SNMP Masters based on the requesting IP address or the port.

If an SNMP Master sends a first request during a recording with warnings or errors or if its history memory has been deleted, these warnings or errors are signaled independently of their age.

**Multi Master / Check IP**

Activates the distinction of SNMP Masters based on the requesting IP address.

**Multi Master / Check Port**

Activates the distinction of SNMP Masters based on the ports used.

**Multi Master / Delete all entries**

Activates the automatic reset of the data history for an SNMP Master which did not issue a request over a selectable period of time. This option should always be activated whenever SNMP Masters send requests which cannot be clearly identified based on the IP address and/or the port address.

**Multi Master / after (in minutes)**

Indicates the time during which an SNMP Master must send a request in order to prevent its data history being deleted. Only effective if the "Delete old entries" option has been activated.

**Multi Master / Monitor window**

Depending on the parameterization, the IP address, the port number and the time of the last request by an SNMP Master are displayed here.

**Configuration example 1:**

SNMP Master 1 on Computer A:  
IP address: 192.168.0.2  
Port: 161

SNMP Master 2 on Computer B:  
IP address: 192.168.0.3  
Port: Cannot be set to a fixed value

=> Check IP "active" and Check port "inactive". Since Computer B does not have a unique port, the port must not be considered.

**Configuration example 2:**

SNMP Master 1 on Computer A:  
IP address: 192.168.0.2  
Port: 161

SNMP Master 2 on Computer A:  
IP address: 192.168.0.2  
Port: 162

SNMP Master 3 on Computer B:  
IP address: 192.168.0.3  
Port: 162

=> Check IP "active" and Check port "active". The combination of the IP address and the port is unique and cannot be changed.

**Configuration example 3:**

SNMP Master 1 on Computer A:  
IP address: 192.168.0.2  
Port: 161

SNMP Master 2 on Computer A:  
IP address: 192.168.0.2  
Port: Cannot be set to a fixed value

=> Check IP "active" and Check port "active". For SNMP Master 1 on Computer A, a unique assignment of the data history is possible. This SNMP Master will receive correct values. SNMP Master 2 on Computer A cannot be clearly identified because its port can always change. Upon each request with a new port, a new data history is created. This leads to incorrect outputs with "enterprises.34655.10.2.marker.1 = warning" and "enterprises.34655.10.2.marker.2 = error". In order to ensure that the large number of unused data histories do not unnecessarily fill the memory, "Multi Master / delete old entries" should be activated. The time period must be sufficiently long in order to ensure that the data history of SNMP Master 1 is not deleted inadvertently.

## 8 Circular Buffer Files

### 8.1 Circular Buffer Files

#### Structure and Functions

The file ID is indicated at the top of the Log.lg6 circular buffer file. It is followed by the parameters and the log data. The log data are organized in a circular buffer. When the buffer is full, the oldest packet is overwritten by the most recent packet.

To prevent this, you can delete the old packets before a new recording (Ctrl+D), increase the maximum size of the Log file (see Parameters for network and Log file ) or restrict the recording time.

#### Restriction

Since the program allows the analysis and filtering of existing data also during a recording session, the size of the Log file must be restricted. Based on practical experience, the Log file should not occupy more than half of your RAM. Packets might get lost if the Log file is too large and the Log file is filtered during a recording.

#### Saving the contents of the circular buffer file and preventing the loss of packets

In order to save the contents of the Log.lg6 file, you must use the "File | Save as..." menu. To do this, you can use any file name for the backup copy.

Deleting the contents of the Log.lg6 file before the next recording (Ctrl+D) allows you to benefit from the maximum recording time without the risk of packet loss.

#### Error Log File and Event Log File

The Log.er6 (error log file) and Log.el6 (event log file) circular buffer files are stored in the same directory as the Log.lg6 file. They are created during the recording process and can only be used upon completion of a record. Since only specific information is recorded, the circular buffers are sufficiently dimensioned for long recording periods and thus allow the long-term recording of specific information.

The Log.er6 file always stores in succession the last error-free and erroneous GOOSE message which belong together. Additionally, the general counter contents are stored in this file.

The Log.el6 file includes the first GOOSE message of each GOOSE and afterwards only those GOOSE messages which notify the user about a status change. In addition, the general counter readings are stored in the file. These might show errors which cannot be traced back by means of the event log file. Errors are only documented completely in the error log file.

Both files can be parameterized. For more detailed information, refer to the Chapter "Settings | Error Log Setting" or "Settings | Event Log Setting".

#### Package loss display and circular buffer overflow display

A red icon is displayed in the *Main Window* in case of a PC capacity overload and a loss of packages during a recording session, which is e.g. caused through the use of third-party programs or the evaluation of already recorded data.

In addition, the illuminated icon for each circular buffer file (log.lg6, log.er6 and log.el6) switches to red when a circular buffer overflow has occurred. When the log.er6 or log.el6 circular buffer files are deactivated, the illuminated icons are displayed in gray. In case of an overflow, old data is overwritten by new data. For long-term records, it cannot be avoided that the Log.lg6 log file overwrites old data with new data. This means that the file only allows a retrospect for a short period, but all packets are included. The log.er6 error log file and the log.el6 event log file record a comparably long period (depending on the data volume), but only include specific information.

## 9 Program and Error Messages

### 9.1 Program Messages

Program messages provide you with information about the program version, the start and end of a recording session and the "Reset counters" event. If a GOOSE has not arrived within the specified time and includes the status "Missing", this will also be documented in a related program message.

### 9.2 Error Messages

Packets which cause warnings or errors have the same priority with regard to their representation in the *Main Window*. They are marked with an error text and displayed with the color defined for erroneous packets. If a GOOSE contains errors, a short code follows for each detected error as described in Table 13 in the Chapter "GOOSE Monitor".

Particularly deep coding errors cannot be mapped in the *Main Window*. These errors are only shown in the *Detailed View* if the corresponding packet is actually fully decoded and compared with the structure data of the configuration file.

Due to the restricted computing power, it is not possible to fully decode all packets and check them with regard to all possible aspects during a recording session.

## 10 IEC 61850 Coding

### 10.1 IEC 61850 Coding

Coding of Data Packets According to 61850

The coding according to 61850 is defined e.g. in the following standards:

Standard	Description
IEC 61850-7-1	Principles and modules of communication
IEC 61850-7-3	Abstract common data classes and attribute definition
IEC 61850-7-4	Definition of logical nodes, data objects and their logical addressing
IEC 61850-8-1	Mapping for communication within the entire station

Table 22: Most important standards of the IEC 61850 for decoding

The following packet types are decoded: MMS with BER Coding in case of transmission with TCP/IP and GOOSE with BER Coding.  
GSE and SV are not decoded.

### 10.2 MMS with BER Coding

IEC 61850-8-1 describes the mapping, i.e. the conversion of services and data with MMS (ISO 9506 - Manufacturing Message Specification).

MMS services and data are described in ASN1.

The connection serves for the transmission of data in ASN1 coding which have to be interpreted according to the formal rules of MMS and mapped to 61850.

For more detailed information, refer to IEC 61850 Coding.

## 10.3 GOOSE with BER Coding

For more detailed information, refer to IEC 61850 Coding.

A GOOSE is used for the spontaneous and simultaneous transmission of time-critical data to several receivers. The GOOSE is transmitted with a multi-cast address directly to the Ethernet level. The assignment of a higher priority ensures that GOOSE are transmitted faster by suitable network components than MMS packets.

In a GOOSE, the data is transmitted as MMS data types in ASN1 coding.

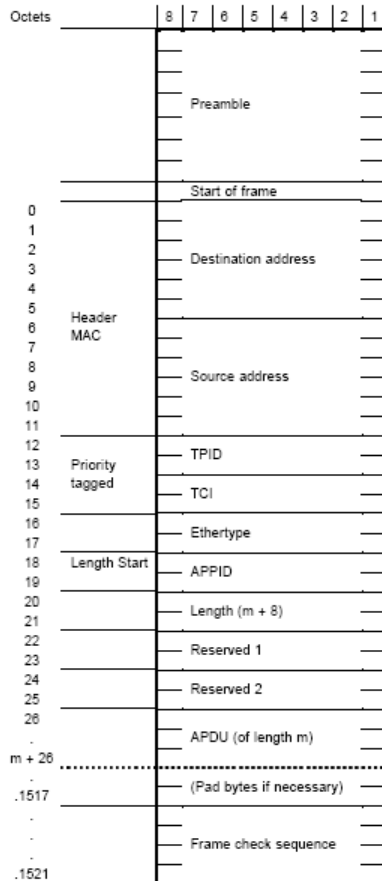


Figure 29: Structure of a GOOSE

## 11 Terms and Abbreviations

### Definition of Terms

#### Ig6 file

Files in the Ig6 data format are referred to as Ig6 files.

#### Circular buffer file = Log.Ig6 = Log file

The Log.Ig6 circular buffer file is a special Ig6 file. It is also referred to as Log file and exists only once.

The Log.Ig6 file is the only file in which data is saved during a recording.

All functions described for Ig6 files can also be applied to the Log.Ig6 file.

#### The Log file becomes the Ig6 file

If the entire contents of the Log.Ig6 file, or only individual packets depending on the filter definition, are saved, this file is assigned a file name and the .Ig6 file extension. This file then has to be referred to as an Ig6 file and no longer as a Log file.

## Abbreviations

Abbreviations in the *GOOSE Monitor*, the *SAM* and the *SCD Viewer* are described in the corresponding chapters.

\$	Hexadecimal format
AppID	Application Identifier
ASN.1	Abstract Syntax Notation 1
CB Reference	GOOSE Control Block Reference
Client	The packet was sent by the client.
d=	Delta time in seconds = time of the current packet – time of the previous packet
DA	Data Attribute
DO	Data Object
FCDA	Functional Constaint Data Attribute
GOOSE	Generic Object Oriented Substation Event
ICD	IED Configuration Description
IED	Intelligent Electronic Device
LD	Logical Device
Ig6 file	see Definition of Terms
LN	Logical Node
Log file	see Definition of Terms
Log.Ig6	see Definition of Terms
LSU	Leap Seconds Unknown
MMS	Manufacturing Messaging Specification
Packet X	No 61850 packet
PM	Program message
SAM	Siemens Application Monitor
SCD	System Configuration Description
Server	The packet was sent by the server
SGM	Single Goose Missing. SGM is a warning and not an error.
SNMP	Simple Network Management Protokol
SNTP	Simple Network Time Protokol
VLAN	Virtual LAN

### IP/TCP packets

ACK	Acknowledgment number valid bit
Ack=	Acknowledgment number
ARP	Address Resolution Protocol
DF	Don't Fragment
Fin	End of data flag
ID	Identification
IP	Internet Protocol, Internet Protocol address
MAC	Media Access Control Address
MF	More Fragments
Offset	Fragment offset
Packet	Packet, frame
Prot	Protocol Version
PSH	Push control bit
RST	Reset connection flag
Seq=	Sequence number
SYN	Synchronize sequence numbers flag
TCP	Transmission Control Protocol
TLg	Total Length = Length IP Header + data
TOS	Type of Service
TTL	Time to Live
Type=	Packet type (hexadecimal)
UDP	User Datagram Protocol
URG	Urgent pointer valid flag

Window=            Number of data bytes which the sender of this segment is willing to accept

## 12 Known Properties and Restrictions

Known properties and restrictions do not give rise for any claim for warranty for defects.

Known properties and restrictions do not give rise to any claim for correction of defects.

### 1. Warnings are output in the same color as errors in the *Main Window*

There is no specific color for warnings in the *Main Window*.

Read the output text which includes a hint regarding the cause of the message.

### 2. Graphical effects in the *Main Window*

Graphical effects occur if a window overlaps with the *Main Window*. On the other hand, the *Main Window* is working very quickly and in a resource-saving manner.

If this effect proves disturbing, you can remove it by clicking on any other window and then back on the main window.

### 3. No formal check of configuration files

The configuration files (SCD or ICD) are not checked based on formal criteria during the read-in process.

Check the configuration files by means of appropriate tools before reading them into the GOOSE Inspector.

### 4. Deviations in the encoded data section of GOOSE or MMS are not detected in real time

Since not all packets are completely decoded in real time, discrepancies in the encoded data section remain undetected during a recording. Discrepancies are only shown during the specific output of packets in the *Detailed View*.

### 5. Effect of the size restriction of the Log.lg6 file

The program runs slowly in case of an excessively large Log file

The Log.lg6 file is structured as a circular buffer, and the size can be defined. If the file becomes too large and the operating system relocates parts of the file to the hard disk, mainly the output of filtered data becomes very slow. The filtering in the "File View" in the *Main Window* during a recording can lead to a packet loss in this case. This function therefore should not be used with large Log files. For the same reasons, we recommend not to run any further programs on the same computer during a recording.

Based on practical experience, the Log file should not be larger than half as large as the physical RAM. 2GB is the absolute upper limit. In case of a large network with 1,000 different GOOSE of a small size with an average transmission interval of 1.5 seconds, this corresponds to a recording period of approximately 4 hours.

Principal "data loss" in a Log file due to the circular buffer function

Due to the organizational structure as a buffer memory, old packets and program messages are principally overwritten by new packets as soon as the configurable size of the Log file has been reached. In this case, only the most recent packets and program messages are stored in the Log file upon completion of the recording. The counters for notes and errors in the *GOOSE Monitor*, however, are incremented during the entire recording period. The views and counter readings in the *SAM* or *GOOSE Monitor*, immediately on termination of the recording, therefore cannot be reached through loading the Log file a second time.

Delete the Log file before starting a new recording session and restrict the recording period in order to be able to precisely trace individual events.

Use the error log file and the event log file in order to trace back switching states and errors in case of long-term



records.

The number of a packet changes as soon as the circular buffer is full.

When the circular buffer file is full and the recording persists, the numbering of the packets is changed consecutively. The most recent packet always has the highest number, whereas the oldest packet of the circular buffer file has the number 1. Since a new packet first has the highest number and then becomes older, it finally has the number of the last packet (1) and is overwritten afterwards. The analysis (filtering) in a completely filled circular buffer file, during a recording, therefore does not make sense.

#### **6. Long loading times of lg6 files and configuration files**

The loading of very large lg6 files and very large, complex configuration files can take several minutes depending on the processing power of the computer. During this time, the program cannot be used for other functions.

When using notebooks and laptops, it must urgently be ensured that the CPU can run at full speed. The power management of notebooks and laptops can significantly reduce the CPU performance, which can result in a multiplication of the loading time.

#### **7. Not all MMS are detected and decoded**

Not all MMS are decoded at the present time. Individual types are not implemented.

#### **8. GSE (GSSE) and SV (SMV) are not detected and decoded**

#### **9. Dynamically created Information Reports are represented at the MMS level**

Dynamically created reports are not described in the configuration file and therefore are only represented at the MMS level.

#### **10. The representations in the SAM are not and cannot be saved directly**

As long as no overflow of the Log.er6 circular buffer file has occurred during the recording, the representation can be fully restored by loading the Log.er6 error log file and the configuration file used at the time.

#### **11. When starting the program, the Log.lg6 file, but not the last configuration file is loaded automatically**

Load the desired configuration file via the "File" menu.

#### **12. The program always goes offline upon termination and always starts offline**

#### **13. Loss of packets due to the use of other programs during a recording**

The monitor program does process data in real time during a recording. If the PC is overloaded this may cause the loss of packets and the recording is not complete.

The loss of packets is displayed by the monitor program.

We recommend not to run additional programs which cause heavy load during a recording with high network load. We recommend to use the input filter to reduce the network load. Please record only packet types (i.g. GOOSE and MMS) you really need.

This is of particular importance if you run the monitor program on a host or substation host.

#### **14. No support for some features of edition 2.0**

The program does not support all features of the edition 2.0. Mainly not supported are:

- Datatype currency
- ReasonCode
- Validation of ConfRevision from GOOSE
- Parts of IEC 8802-3 frame format
- IEC 8802-3 frame format with HSR link redundancy
- IEC 8802-3 frame format with PRP1 link redundancy

- GOOSE type 1a 88-B8 APPID 10
- Reserved first part of on Ethernet
- srcXX attributes and serviceType within Input/ExtRef

**15. SAM does not support FCD**

GOOSE with FCD (in place of FCDA) and inputs for FCD (in place of FCDA) will not be matched and displayed fully in SAM.

Please use the SCD Viewer to get the mapping of GOOSE to input in detail.

## 13 End User License Agreement

Copyright (C) 2009 Berthold Boeser Engineering Consultants  
End User License Agreement

By using this program, you accept this License Agreement and confirm that you have read and understood its contents and agree with of its all terms and conditions.

- 1) I herewith grant the purchaser of my program a non-exclusive right of use. The program may only be used with the dongle purchased. The program may be installed on several computers, and a backup copy may be performed. Any alterations to or transfer of the program are prohibited.
- 2) The program and the documentation were created with the utmost care. Any errors which prevent the use of the program for the intended purpose shall be rectified within a period of 12 months.
- 3) Known properties and restrictions do not give rise for any claim for warranty for defects and do not give rise to any claim for correction of defects.
- 4) The purchaser uses the program at his own risk. Except cases of gross negligence or deliberate actions, I do not assume any liability for:
  - losses or loss of profit through the use of the program
  - loss or damage of data
  - consequential loss or business interruption
  - personal injury of any kind
- 5) Any claims for damages, independent of their legal basis, are restricted to the level of the license fee paid. Any liability for claims shall cease 12 months after delivery.
- 6) This Agreement shall be subject to German law. Place of jurisdiction for disputes which arise from or in connection with this Agreement shall be my main place of business. If individual provisions of this License Agreement are or become invalid, this shall not affect the validity of the remainder. Invalid provisions shall be replaced by such provisions which are valid and come closest to the intended purpose of the original.

# Index

## - A -

Abbreviations 38  
 About 28  
 All packets 27

## - B -

BER  
   GOOSE 38  
   MMS 37  
 Byteser.Hex. 27

## - C -

CD 5  
 Circular Buffer File 36  
   Description 5  
   Menu 27  
   Settings 32  
 Coding  
   GOOSE 38  
   MMS 37  
 Columns in the GOOSE Monitor 23  
 Columns of the GOOSE Monitor in the SAM 15  
 Configuration file 8  
 Configuration file close 26  
 Configuration file open 26

## - D -

Data directory  
   Description 5  
   Installation 4  
 Description area 15  
 Description of functions 5  
 Detail View 10  
   Description 5  
   Menu 27  
 Detailed View 10  
 Details  
   Main Window 10  
 Dongle 8

## - E -

End User License Agreement 43  
 Error 23  
 Error Log File 36  
 Error messages 37  
 Error messages of the dongle 8  
 Errors 15  
 Event Log File 36  
 Exit 26  
 Export 26

## - F -

File 26  
 File View 10  
   Menu 27  
 Filter on/off 28  
 Filters setting 15  
 Font size 32  
   Menu 27

## - G -

Getting started 8  
 GOOSE 38  
   tree view 20  
 GOOSE Monitor 23  
   Menu 27  
   Siemens Application Monitor 15  
 GOOSE to Log 27

## - H -

Help 28  
 Hotkeys 13

## - I -

ICD 8  
 Icons in the SCD Viewer 20  
 Icons of the tree view in the SAM 15  
 IEC 61850 coding 37  
 IED tree view 20  
 Input filter 31  
 Input filter settings 31  
 Input tree view 20  
 Installation 4

**- L -**

- Language 27
- License 43
- Log delete 26
- Log file 32
- Log.lg6 27
- Logical View 10
  - Menu 27
- Loss of packets 36

**- M -**

- Main Window 10
  - Description 5
- Manu View 27
- Menu File 26
- Menu Filter 28
- Menu Help 28
- Menu Mode 26
- Menu Settings 27
- MMS 37
- Mode 26

**- N -**

- Net interface 27
- Network 32
  - Getting Started 8
- Network connection 8

**- O -**

- Offline 26
- Online 26
- Online View
  - Main Window 10
  - Menu 27
- Only 61850 27
- Open 26
- Output filter 28
  - Menu 28
- Output filter settings 28

**- P -**

- Packet color 32
- Packet structure 37
- Parameters area 15

- Print 10
  - Menu 26
- Program messages 37
- Properties known 40

**- R -**

- Report tree view 20
- Reset counters 23
- Restrictions known 40

**- S -**

- SAM 27
- Save as 26
- SCD
  - Getting Started 8
  - Main Window 10
  - Menu 27
  - SCD Viewer 20
  - Siemens Application Monitor 15
- SCD Viewer 20
  - Menu 27
- Scrolling data 10
- Settings 32
  - Input filter 31
  - Log file 32
  - Menu 27
  - Network 32
  - Output filter 28
  - SNMP 33
  - SNTP 33
- Setup file 5
- Siemens Application Monitor 15
  - Menu 27
- Signal list 15
- Size of Lof file 32
- SNMP function and parameters 33
- SNTP function and parameters 33
- Status of a GOOSE 23
- System requirements 5

**- T -**

- Terms 38
- Tree view 15

**- U -**

- Uninstallation 4

**- V -**

View 27

**- W -**

Warning 23

Warnings 15