

SIEMENS

Readme

DIGSI 5 TEA-X Plug-in for Microsoft Excel

V1.10



Note

This document contains important information about the **DIGSI 5 TEA-X Plug-in**. It is part of the product supplied. In case of uncertainties this information should be considered more up-to-date than any other information.

Disclaimer of Liability

This document has been subjected to rigorous technical review before being published. It is revised at regular intervals, and any modifications and amendments are included in the subsequent issues. The content of this document has been compiled for information purposes only. Although Siemens AG has made best efforts to keep the document as precise and up-to-date as possible, Siemens AG shall not assume any liability for defects and damage which result through use of the information contained herein.

This content does not form part of a contract or of business relations; nor does it change these. All obligations of Siemens AG are stated in the relevant contractual agreements.

Siemens AG reserves the right to revise this document from time to time.

Document Release 1.10
Edition 7/2016

Copyright

Copyright © Siemens AG 2016.
All rights reserved.

The disclosure, duplication, distribution and editing of this document, or utilization and communication of the content are not permitted, unless authorized in writing. All rights, including rights created by patent grant or registration of a utility model or a design, are reserved.

Registered Trademarks

SIPROTEC, DIGSI, SIGUARD, SIMEAS, and SICAM are registered trademarks of Siemens AG. Any unauthorized use is illegal. All other designations in this document can be trademarks whose use by third parties for their own purposes can infringe the rights of the owner.

Table of Contents

1	Introduction	4
2	New Features and Modifications	5
3	Installation	6
4	Import device settings from a TEA-X file.....	7
5	Export device settings to a TEA-X file.....	11
6	Set language for DIGSI 5 TEA-X Plug-in.....	14
7	Support	15

DIGSI 5 TEA-X Plug-in

1 Introduction

DIGSI 5 TEA-X Plug-in is intended for import, modification, and export of SIPROTEC 5 device settings using Microsoft Office Excel. The plug-in will use TEA-X as the underlying data transfer mechanism for import and export operations.

Refer to the following help topics to get further information on the workflows of plug-in.

1. [Import device settings from a TEA-X file](#)
2. [Export device settings to a TEA-X file](#)
3. [Set language for DIGSI 5 TEA-X Plug-in](#)

Prerequisites:

Following are the prerequisites for installation of DIGSI 5 TEA-X Plug-in.

1. Microsoft Office Excel (2007 Service Pack 3 or higher versions)
2. Visual Studio 2010 Tools for Office Runtime
3. Microsoft .NET Framework 4 Client Profile



Note

Totally integrated Energy Automation eXchange (TEA-X) is a data exchange format (XML based) defined for *Siemens Energy Automation* products.

2 New Features and Modifications

2.1 New Features and Modifications in DIGSI 5 TEA-X Plug-in V1.10

1. Inclusion of 'Settings Category' in device settings display

DIGSI 5 TEA-X Plug-in device settings display now includes 'Settings Category' for better identification of settings. Also the order of settings in the Plug-in is same as that of DIGSI 5.

Function group	Function	Function block	Settings Category	VUID	Setting name	Settings group1	Unit	Min	Max	Step
		General								
			Device	91.101	Rated frequency	50 Hz				
				91.102	Minimum operate time		0 s	0	60	0.01
				91.115	Set. format residu. comp.	Kr, Kx				
				91.138	Block monitoring dir.	off				
			Chatter blocking	91.123	No. permis. state changes		0	0	65535	1
				91.127	Initial test time		1 s	1	65535	1
				91.124	No. of chatter tests		0	-1	32767	1
				91.125	Chatter idle time		1 min	1	65535	1
				91.137	Subsequent test time		2 s	2	65535	1
			Change group	91.113	Number settings groups		1			
				91.114	Activat. of settings group	settings group 1				
				91.162	Blk setting change	false				
			Control	91.118	Enable sw.auth. station	false				
				91.119	Multiple sw.auth. levels	false				
				91.152	Specific sw. authorities	false				
			CFC	91.161	CFC chart. quality handling	Automatic				
			Test support	91.150	Activate device test mode	false				
				91.151	Oper. bin.outp. under test	false				

Figure 2.1: Device settings display with 'Settings Category'

3 Installation

3.1 General Notes on Installation



Note

You need administrator rights to install *DIGSI 5 TEA-X Plug-in*.

- Close any running Microsoft Office application before installing DIGSI 5 TEA-X Plug-in.
- Execute **Setup.exe**. This will install DIGSI 5 TEA-X Plug-in V1.10 over your older DIGSI 5 TEA-X Plug-in installation.
- Start Microsoft Excel. You can find DIGSI 5 ribbon control in Excel ribbon menu to perform operations using DIGSI 5 TEA-X Plug-in.

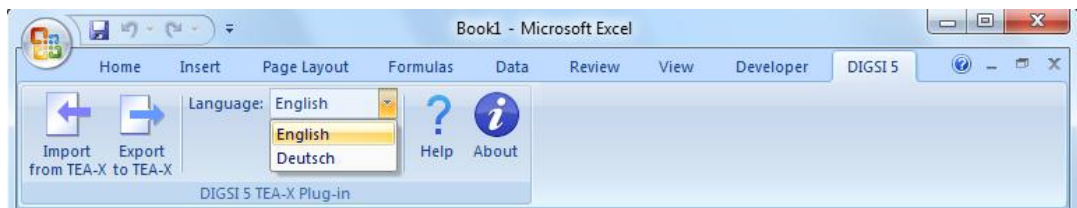


Figure 3.1: DIGSI 5 ribbon control

3.2 Deinstallation

With the Windows uninstaller, you can remove DIGSI 5 TEA-X Plug-in from your PC. During deinstallation, the installer of DIGSI 5 TEA-X Plug-in removes all program files installed.

- Select **Control Panel** in the Windows Start menu and open **Programs > Uninstall a program**.

In the list, select **Siemens DIGSI 5 TEA-X Plug-in V1.10**.

Click **Remove** to start the deinstallation. Follow the installation instructions.

4 Import device settings from a TEA-X file

This topic describes how to import SIPROTEC 5 device settings from a TEA-X file to an Excel worksheet.

Step 1: Click on *Import from TEA-X*. The *Import device settings* dialog appears as shown in Figure 4.1.

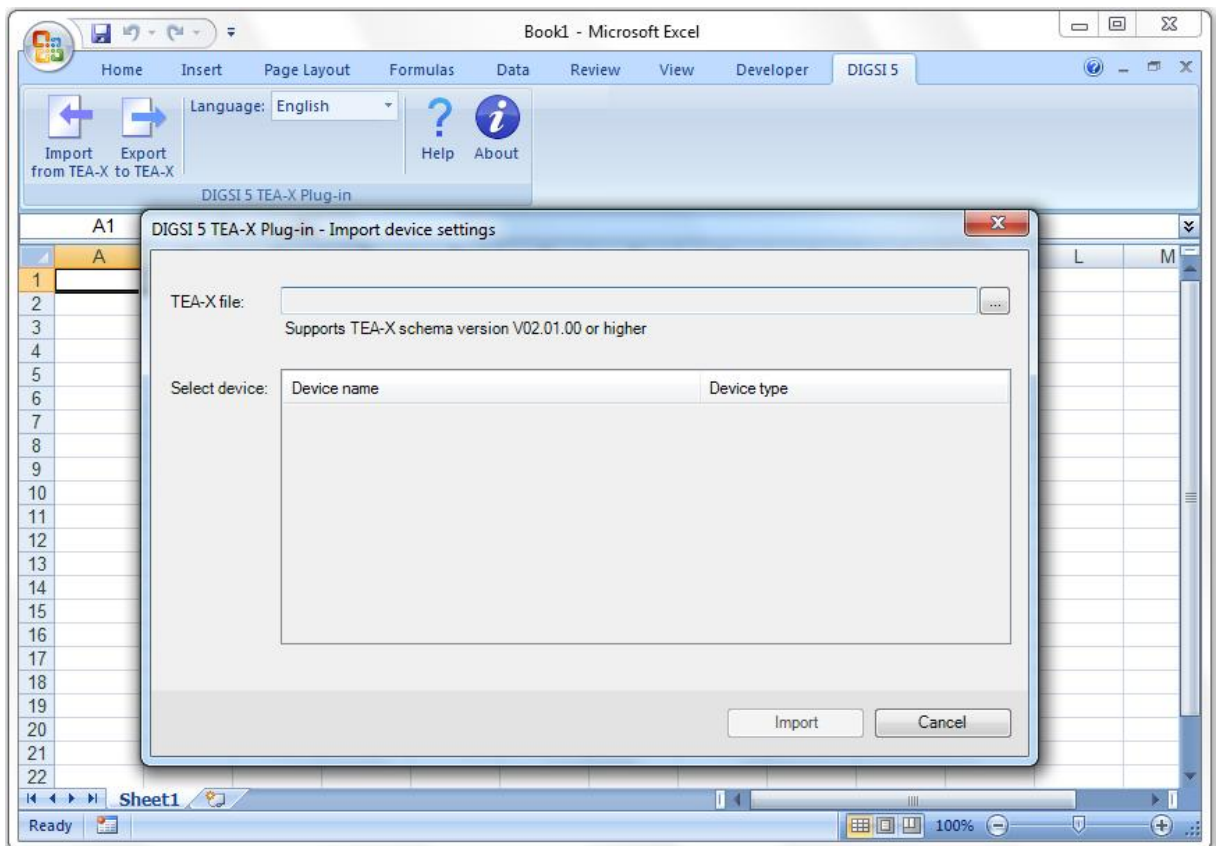


Figure 4.1: Import device settings dialog

Step 2: Click on ... and select a TEA-X file. All devices are available in the *Select device* box.

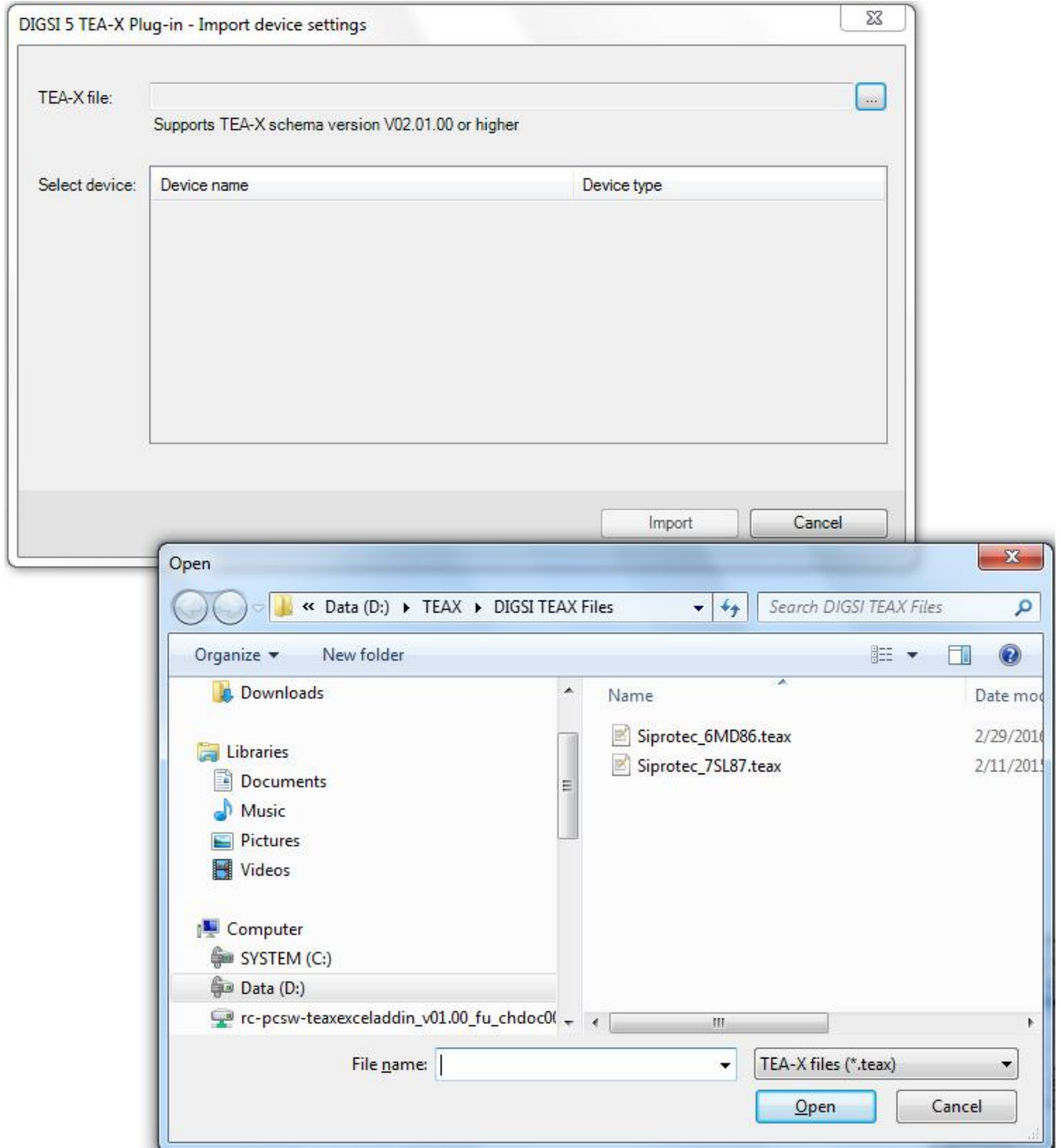


Figure 4.2: Browse source TEA-X file

Step 3: Select a device from the box, and click on *Import*. Now the device settings from the selected device are imported into the Excel worksheet.

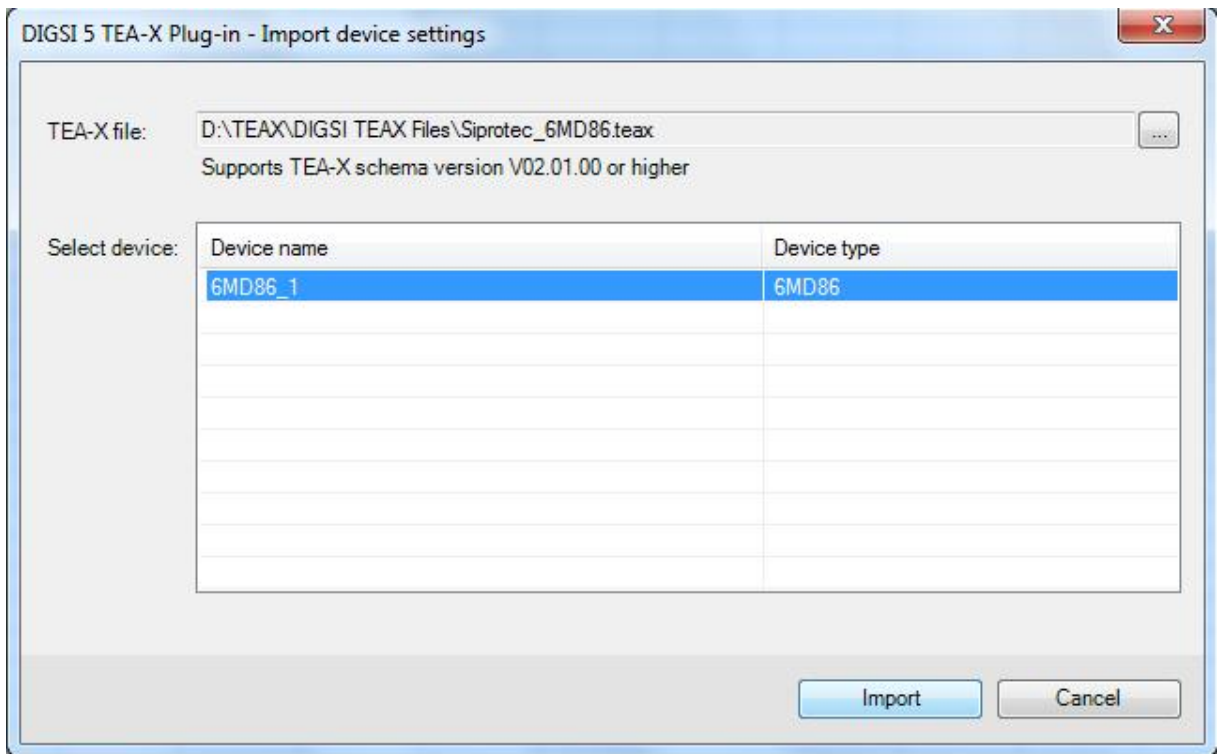


Figure 4.3: Select device to import

Step 4: On successful import, a new Excel worksheet will be created as depicted in Figure 4.4.

Function group	Function	Function block	Settings Category	VUID	Setting name	Settings group1	Unit	Min	Max	Step
		General								
			Device	91.101	Rated frequency	50 Hz				
				91.102	Minimum operate time	0 s	0	0	60	0.01
				91.115	Set. format residu. comp.	Kr, Kx				
				91.138	Block monitoring dir.	off				
		Chatter blocking		91.123	No. permis. state changes	0	0	0	65535	1
				91.127	Initial test time	1 s	1	1	65535	1
				91.124	No. of chatter tests	0	-1	-1	32767	1
				91.125	Chatter idle time	1 min	1	1	65535	1
				91.137	Subsequent test time	2 s	2	2	65535	1

Figure 4.4: Imported device settings

Remarks:

1. After TEA-X import, the settings Excel worksheet will have hidden columns within the column range A to J. These hidden columns contain information required for export. You must not delete these columns or alter their contents.
2. Device settings will be displayed in the order of their presence as in the TEA-X file.
3. You are allowed to edit only setting group values.
4. Read only settings (displayed in dark Turquoise color) must not be modified

5 Export device settings to a TEA-X file

This topic describes how to export SIPROTEC 5 device settings to a TEA-X file from an Excel worksheet.

Precondition:

The settings have already been imported from a TEA-X file to Excel.

Step 1: Click on *Export to TEA-X*. *Export device settings* dialog appears as shown in Figure 5.1.

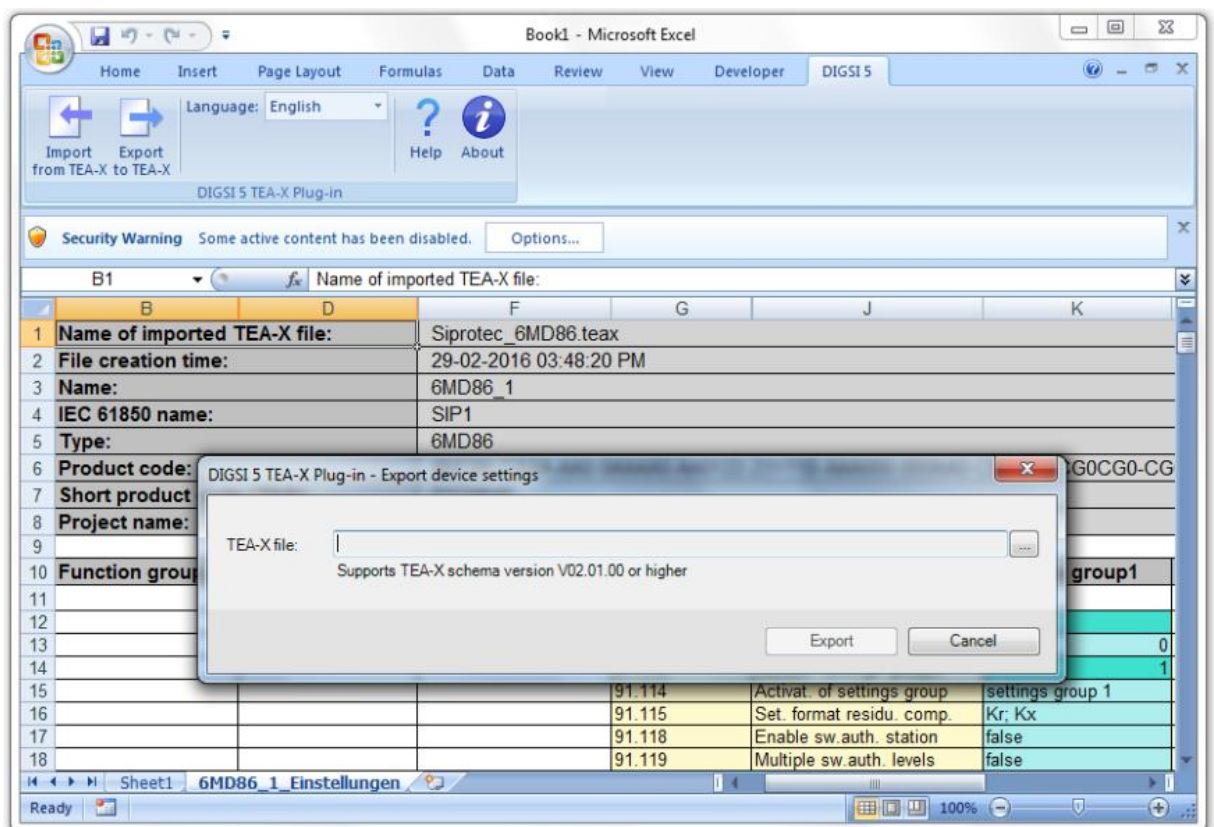


Figure 5.1: Export device settings dialog



Note

The plug-in will export the device settings that are present in the active Excel worksheet.

Step 2: Click on ... and select a TEA-X file.

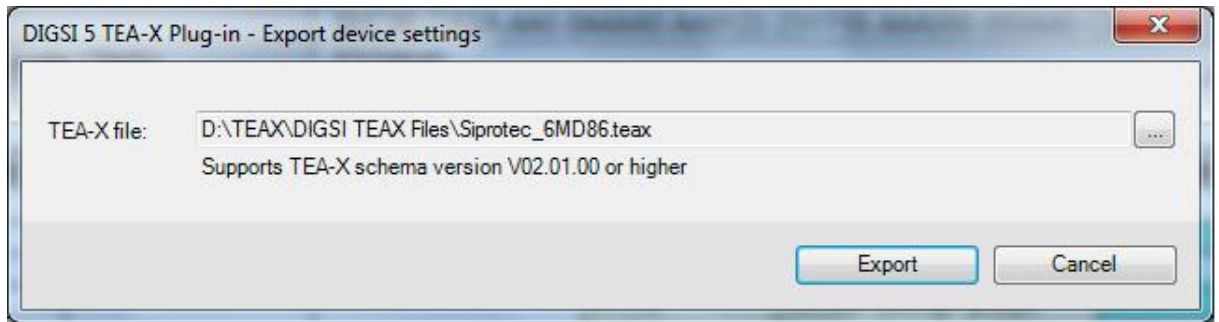


Figure 5.2: Browse target TEA-X file



Note

The target TEA-X file must contain the same device settings as the Excel worksheet.

Step 3: Click on the *Export* button to start the export of the device settings to the target TEA-X file. The result of the export will be displayed in a message box as shown in Figure 5.3.

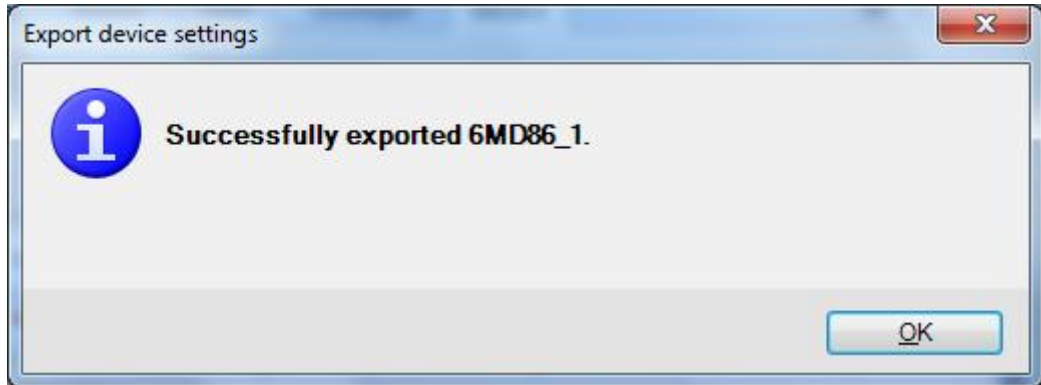


Figure 5.3: Success message window

Remarks:

1. The plug-in will overwrite the existing settings group values in the target TEA-X file with the corresponding settings group values from the settings Excel worksheet.
2. Only existing setting group values can be modified.
3. It is not possible to add or remove new settings.
4. The modified setting group values are validated only against *Min-Max* value range.

6 Set language for DIGSI 5 TEA-X Plug-in

This topic describes how to set the language for DIGSI 5 TEA-X Plug-in.

Step 1: Open an Excel workbook and navigate to *DIGSI 5* Ribbon control. *DIGSI 5* Ribbon control is shown in Figure 6.1.

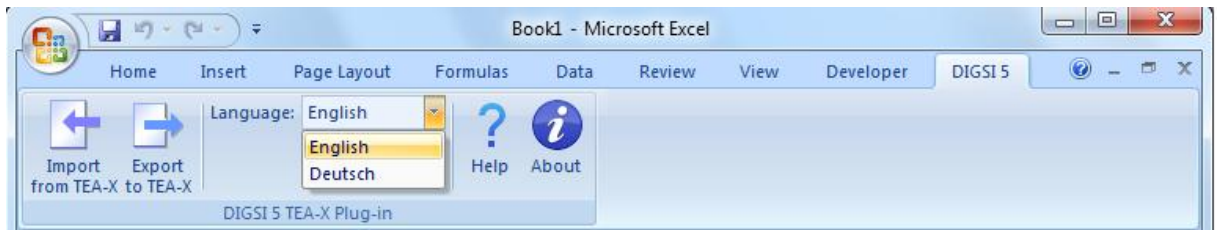


Figure 6.1: DIGSI 5 ribbon control

Step 2: Select a language from the *Language* drop down list. On selection, the plug-in language will be changed accordingly.

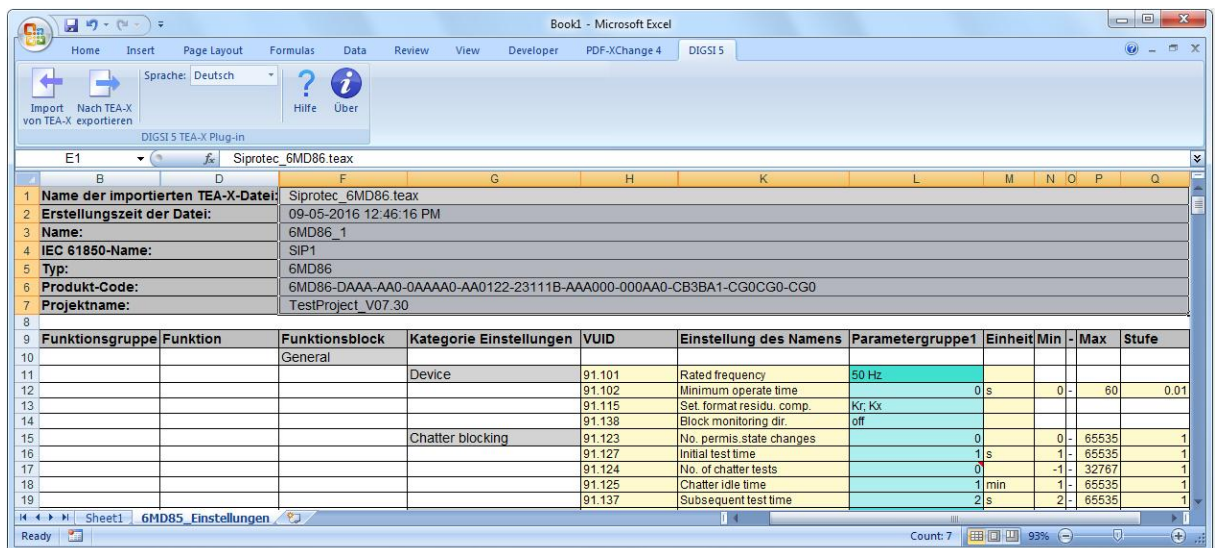


Figure 6.2: Plug-in in German language

Remarks:

1. Currently English and German are supported.

7 Support

For questions about DIGSI 5 TEA-X Plug-in, please contact the Siemens Customer Support Center.

Phone: +49 (0) 180 524 7000

Fax: +49 (0) 180 524 2471

E-mail: support.energy@siemens.com

Internet: <http://www.siemens.com/energy-support>