

SIEMENS

Readme

DIGSI 5 TEA-X Plug-in for Microsoft Excel

V1.02

**Note**

This document contains important information about the **DIGSI 5 TEA-X Plug-in**. It is part of the product supplied. In case of uncertainties this information should be considered more up-to-date than any other information.

Disclaimer of Liability

This document has been subjected to rigorous technical review before being published. It is revised at regular intervals, and any modifications and amendments are included in the subsequent issues. The content of this document has been compiled for information purposes only. Although Siemens AG has made best efforts to keep the document as precise and up-to-date as possible, Siemens AG shall not assume any liability for defects and damage which result through use of the information contained herein.

This content does not form part of a contract or of business relations; nor does it change these. All obligations of Siemens AG are stated in the relevant contractual agreements.

Siemens AG reserves the right to revise this document from time to time.

Document Release 1.02
Edition 4/2016

Copyright

Copyright © Siemens AG 2016.
All rights reserved.

The disclosure, duplication, distribution and editing of this document, or utilization and communication of the content are not permitted, unless authorized in writing. All rights, including rights created by patent grant or registration of a utility model or a design, are reserved.

Registered Trademarks

SIPROTEC, DIGSI, SIGUARD, SIMEAS, and SICAM are registered trademarks of Siemens AG. Any unauthorized use is illegal. All other designations in this document can be trademarks whose use by third parties for their own purposes can infringe the rights of the owner.

Table of Contents

1	Introduction	4
2	New Features and Modifications	5
3	Installation	6
4	Import device settings from a TEA-X file.....	7
5	Export device settings to a TEA-X file.....	11
6	Set language for DIGSI 5 TEA-X Plug-in.....	14
7	Support	15

DIGSI 5 TEA-X Plug-in

1 Introduction

DIGSI 5 TEA-X Plug-in is intended for import, modification, and export of SIPROTEC 5 device settings using Microsoft Office Excel. The plug-in will use TEA-X as the underlying data transfer mechanism for import and export operations.

Refer to the following help topics to get further information on the workflows of plug-in.

1. [Import device settings from a TEA-X file](#)
2. [Export device settings to a TEA-X file](#)
3. [Set language for DIGSI 5 TEA-X Plug-in](#)

Prerequisites:

Following are the prerequisites for installation of DIGSI 5 TEA-X Plug-in.

1. Microsoft Office Excel (2007 Service Pack 3 or higher versions)
2. Visual Studio 2010 Tools for Office Runtime
3. Microsoft .NET Framework 4 Client Profile



Note

Totally integrated Energy Automation eXchange (TEA-X) is a data exchange format (XML based) defined for *Siemens Energy Automation* products.

2 New Features and Modifications

2.1 New Features and Modifications in DIGSI 5 TEA-X Plug-in V1.02

1. Support for Microsoft Office multiple language packs

DIGSI 5 TEA-X Plug-in supports language specific Microsoft Excel versions. Support for English, German, French, Portuguese, Spanish, and Russian are tested.

2. Support for 32-bit and 64-bit Microsoft Office applications

DIGSI 5 TEA-X Plug-in can install in 32-bit and 64-bit variants of Microsoft Office 2007(only 32-bit), 2010, and 2013.

3 Installation

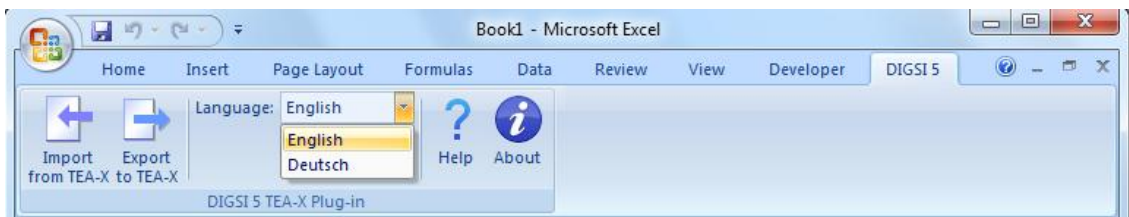
3.1 General Notes on Installation



Note

You need administrator rights to install *DIGSI 5 TEA-X Plug-in*.

- Close any running Microsoft Office application before installing DIGSI 5 TEA-X Plug-in.
- Execute **Setup.exe**. This will install DIGSI 5 TEA-X Plug-in V1.02 over your older DIGSI 5 TEA-X Plug-in installation.
- Start Microsoft Excel. You can find DIGSI 5 ribbon control in Excel ribbon menu to perform operations using DIGSI 5 TEA-X Plug-in.



3.2 Deinstallation

With the Windows uninstaller, you can remove DIGSI 5 TEA-X Plug-in from your PC. During deinstallation, the installer of DIGSI 5 TEA-X Plug-in removes all program files installed.

- Select **Control Panel** in the Windows Start menu and open **Programs > Uninstall a program**.

In the list, select **Siemens DIGSI 5 TEA-X Plug-in V1.02**.

Click **Remove** to start the deinstallation. Follow the installation instructions.

4 Import device settings from a TEA-X file

This topic describes how to import SIPROTEC 5 device settings from a TEA-X file to an Excel worksheet.

Step 1: Click on *Import from TEA-X*. The *Import device settings* dialog appears as shown in Figure 2.1.

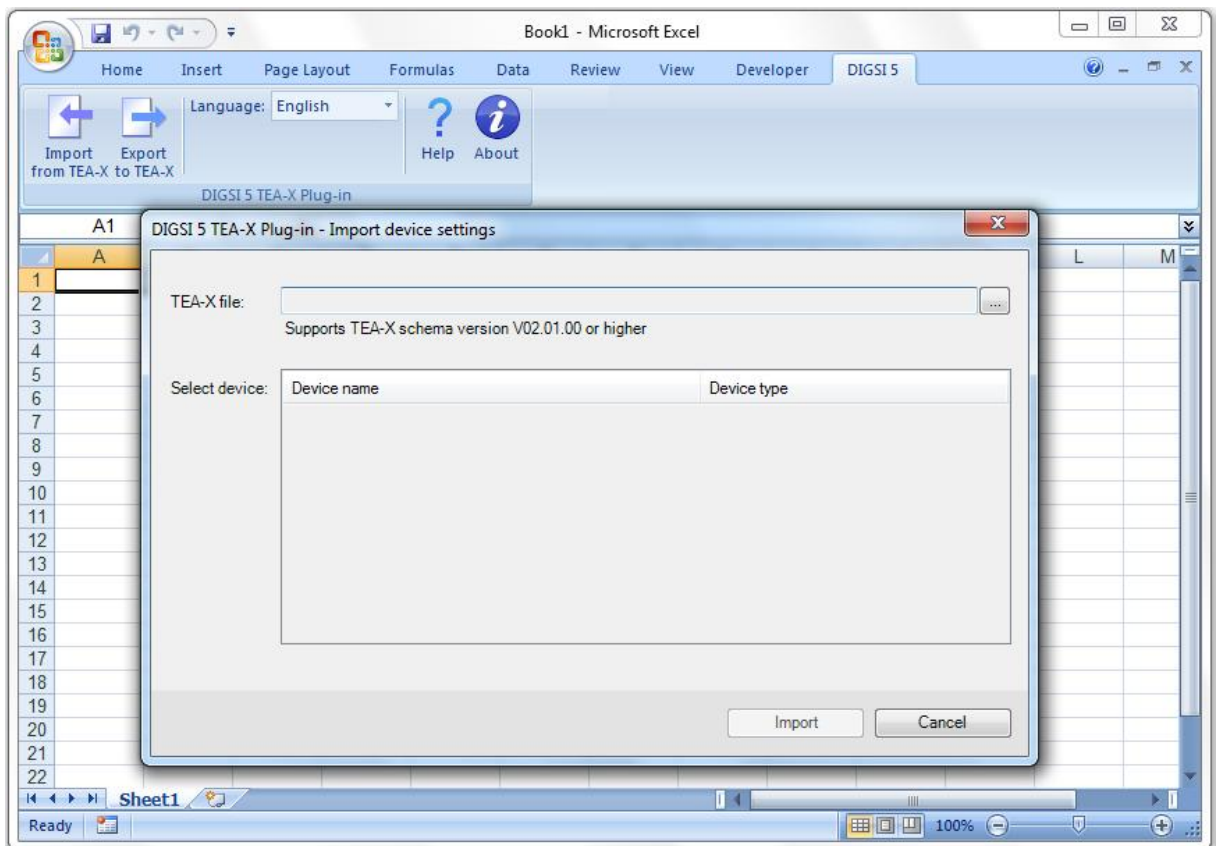


Figure 2.1: Import device settings dialog

Step 2: Click on ... and select a TEA-X file. All devices are available in the *Select device* box.

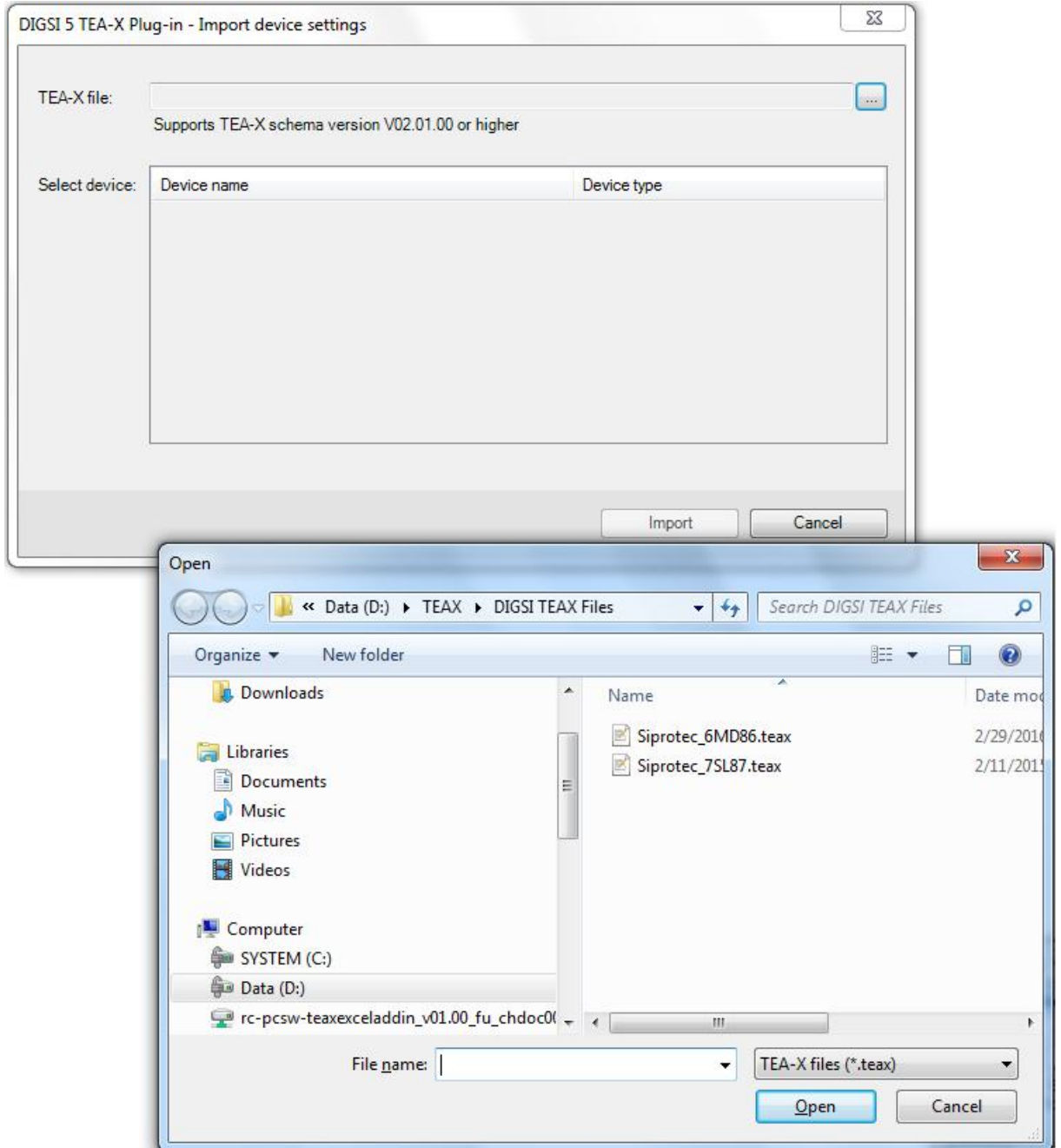


Figure 2.2: Browse source TEA-X file

Step 3: Select a device from the box, and click on *Import*. Now the device settings from the selected device are imported into the Excel worksheet.

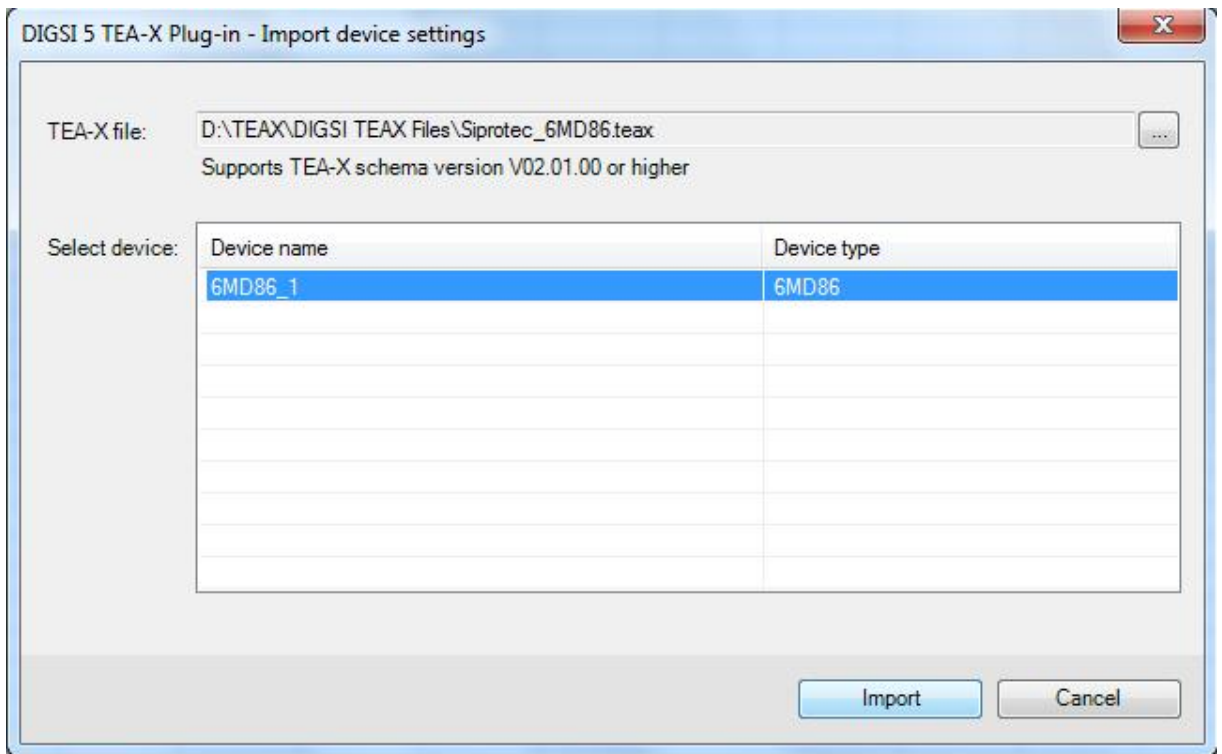


Figure 2.3: Select device to import

Step 4: On successful import, a new Excel worksheet will be created as depicted in Figure 2.4.

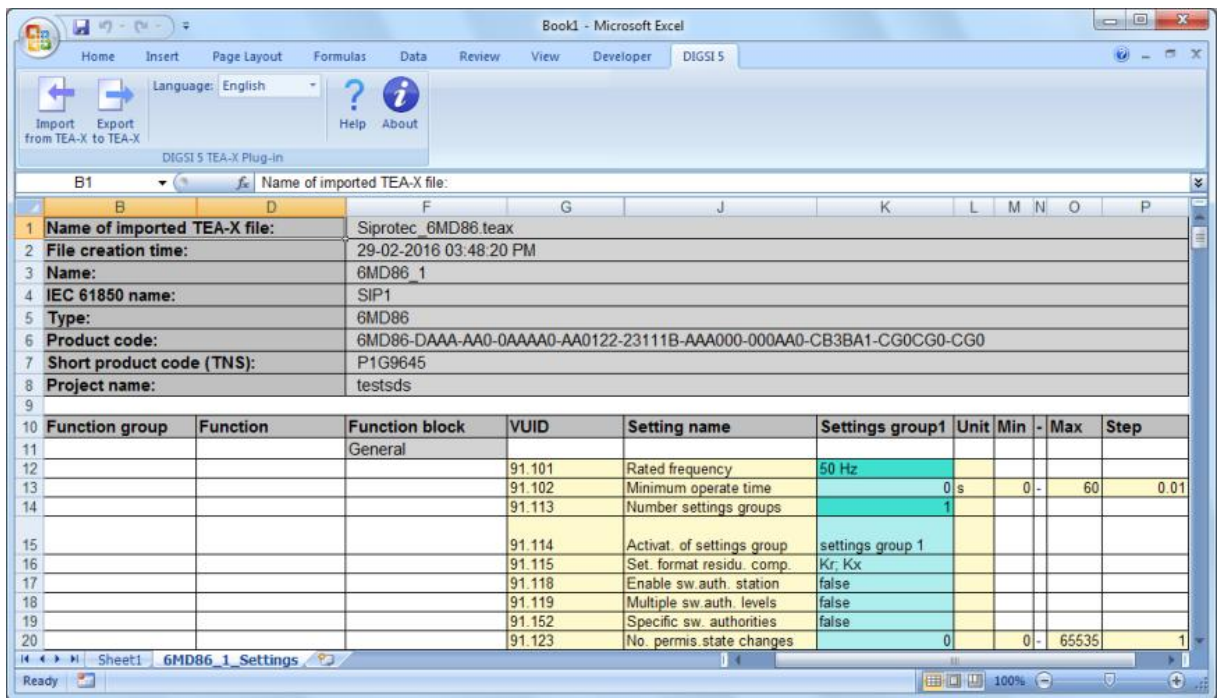


Figure 2.4: Imported device settings

Remarks:

1. After TEA-X import, the settings Excel worksheet will have hidden columns within the column range A to J. These hidden columns contain information required for export. You must not delete these columns or alter their contents.
2. Device settings will be displayed in the order of their presence as in the TEA-X file.
3. You are allowed to edit only setting group values.
4. Read only settings (displayed in dark Turquoise color) must not be modified

5 Export device settings to a TEA-X file

This topic describes how to export SIPROTEC 5 device settings to a TEA-X file from an Excel worksheet.

Precondition:

The settings have already been imported from a TEA-X file to Excel.

Step 1: Click on *Export to TEA-X*. *Export device settings* dialog appears as shown in Figure 3.1.

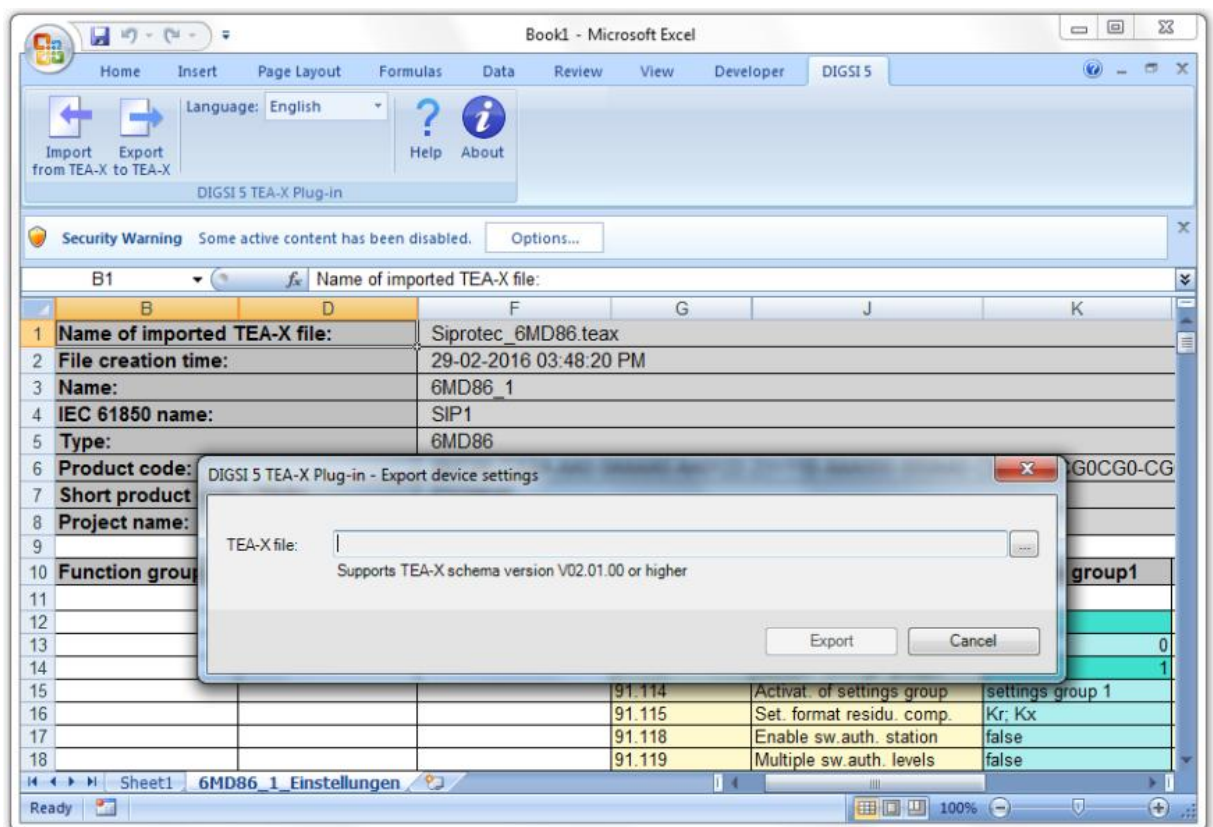


Figure 3.1: Export device settings dialog



Note

The plug-in will export the device settings that are present in the active Excel worksheet.

Step 2: Click on ... and select a TEA-X file.

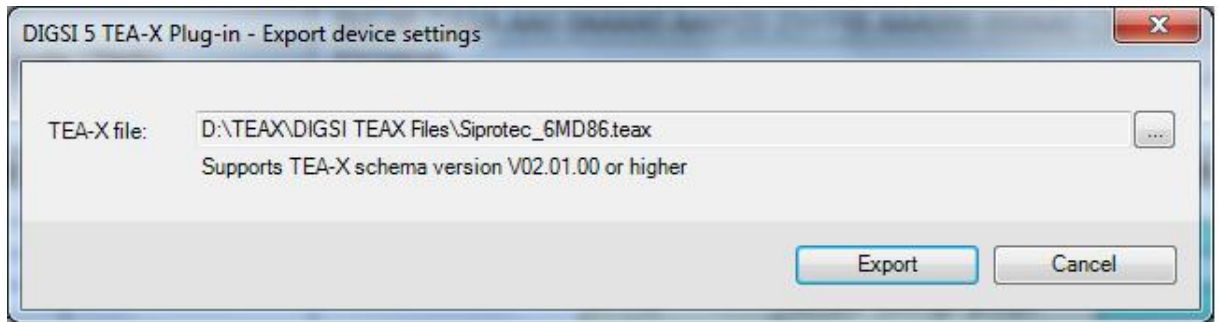


Figure 3.2: Browse target TEA-X file



Note

The target TEA-X file must contain the same device settings as the Excel worksheet.

Step 3: Click on the *Export* button to start the export of the device settings to the target TEA-X file. The result of the export will be displayed in a message box as shown in Figure 3.3.

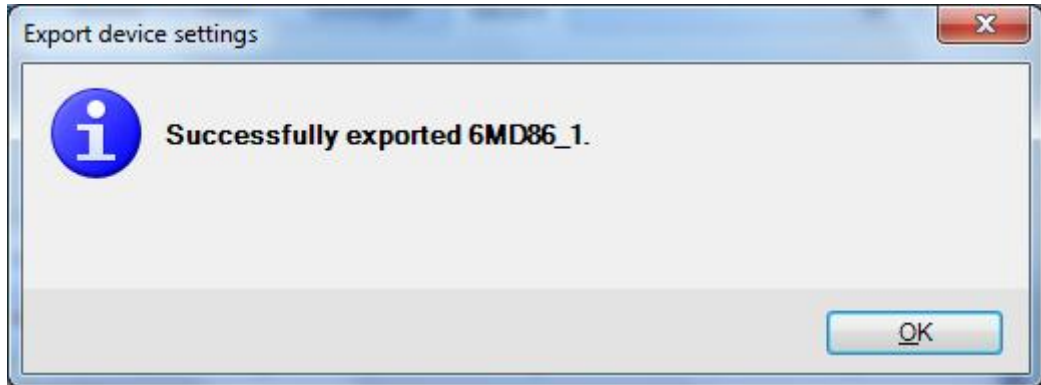


Figure 3.3: Success message window

Remarks:

1. The plug-in will overwrite the existing settings group values in the target TEA-X file with the corresponding settings group values from the settings Excel worksheet.
2. Only existing setting group values can be modified.
3. It is not possible to add or remove new settings.
4. The modified setting group values are validated only against *Min-Max* value range.

6 Set language for DIGSI 5 TEA-X Plug-in

This topic describes how to set the language for DIGSI 5 TEA-X Plug-in.

Step 1: Open an Excel workbook and navigate to *DIGSI 5* Ribbon control. *DIGSI 5* Ribbon control is shown in Figure 4.1.

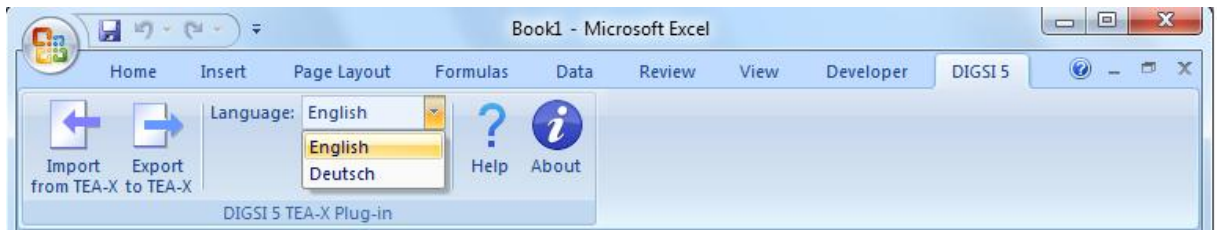


Figure 4.1: DIGSI 5 ribbon control

Step 2: Select a language from the *Language* drop down list. On selection, the plug-in language will be changed accordingly.

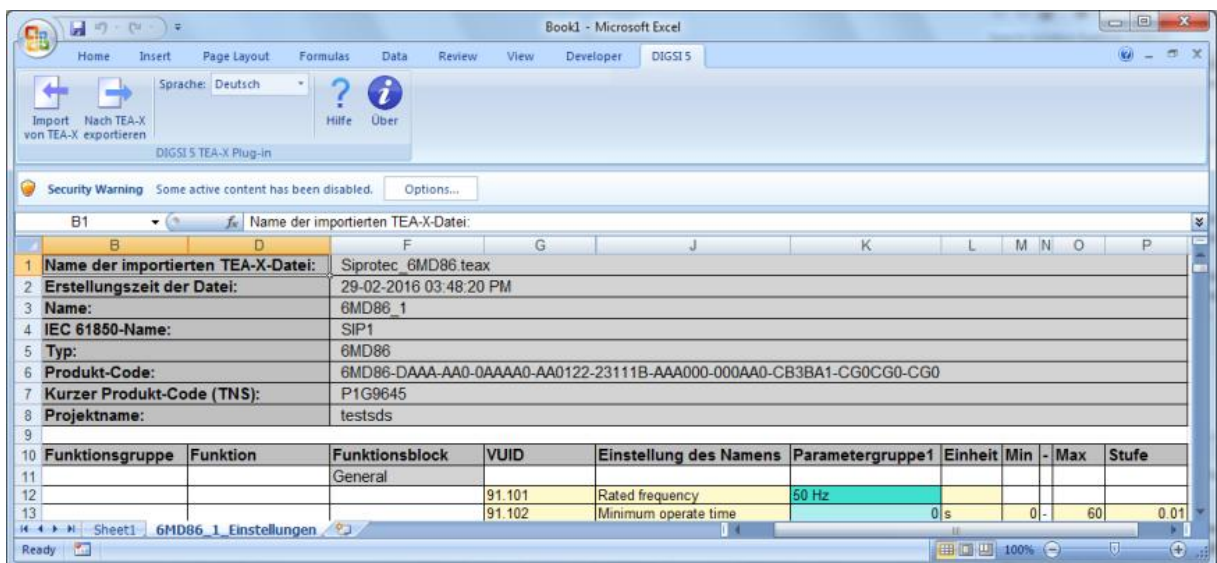


Figure 4.2: Plug-in in German language

Remarks:

1. Currently English and German are supported.

7 Support

For questions about DIGSI 5 TEA-X Plug-in, please contact the Siemens Customer Support Center.

Phone: +49 (0) 180 524 7000

Fax: +49 (0) 180 524 2471

E-mail: support.energy@siemens.com

Internet: <http://www.siemens.com/energy-support>