

**SIEMENS**  
Ingenuity for life

# SICAM A8000 + SIMATIC HMI

Compact, Flexible Telecontrol and Automation System  
combined with SIMATIC HMI Panel

[www.siemens.com/sicam-a8000](http://www.siemens.com/sicam-a8000)

## Wherever energy flows

The applications for the SICAM A8000 series comprise distribution automation through connection of renewable energies (wind, solar, hydro) right down to railway power supply and industrial applications.

In combination with SIMATIC HMI Panel the application become even more diverse.

## First choice for demanding HMI applications

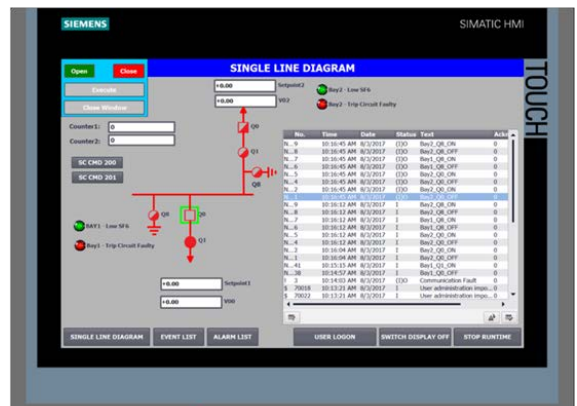
The SIMATIC HMI Panel offers a modern touch-panel-solution based on WinCC and meets all requirements for HMI-applications in harsh environmental conditions.

Unique is the configuration via SIMATIC WinCC in the new TIA Portal, with an unknown engineering efficiency benefit for the users.

Examples of visualization options include on one hand the display of current status messages (In- and Output) of the connected SICAM A8000 modules with graphical form of "LEDs" or switching objects, and on the other hand the logging of information in event and alarm lists.

## Highlights

- Scalable from 4" to 22", with touch screen
- High End Performance for demanding HMI applications even in confined spaces
- High screen resolution. performance and functionality
- RTU and panel designed for harsh operating conditions
- WinCC configuration with the new TIA Portal environment



SIMATIC HMI Panel

Modbus TCP/IP  
Modbus RTU



SICAM A8000

# Tailored

## Technical specifications

### Display

- TFT - color
- Size: 4" up to 22"
- Resolution: 480x272 to 1,920x1,080

### Control elements

- Touch operation
- Function keys

### Message system

- Number of messages / message classes  
2,000 / 32 up to 6,000 / 32
- Process pictures  
500 up to 750
- Tags / variables  
1,024 up to 4,096

### Power supply

- 24V DC

### Protocols

- Modbus RTU
- Modbus TCP/IP

### Operation system

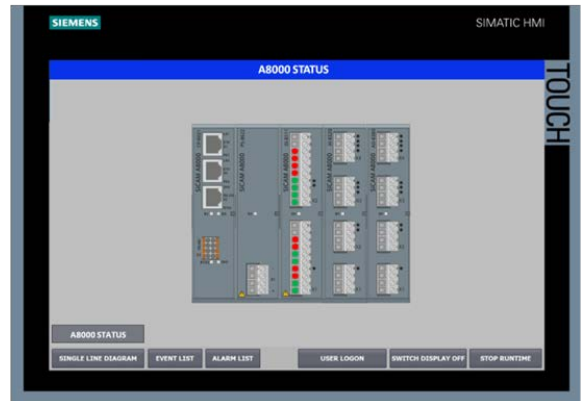
- Windows CE

### Language

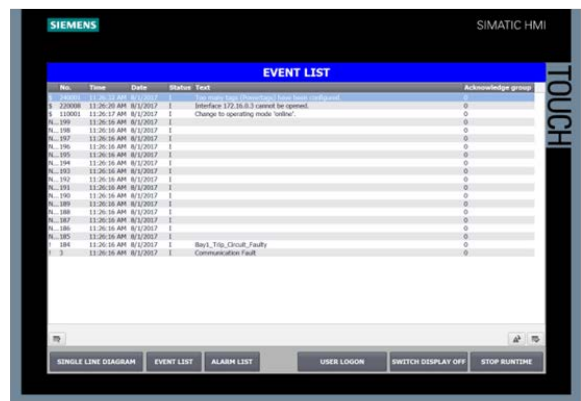
- Multilingual – 32 Languages

### Contacts

- Daniel Nehls, EM DG PRO S PRO  
[daniel.nehls@siemens.com](mailto:daniel.nehls@siemens.com)
- Robert Lampe, EM DG SYS LM  
[robert.lampe@siemens.com](mailto:robert.lampe@siemens.com)



SICAM AB000 modules with „visualized LEDs“



Eventlist

- **Link**  
<http://w3.siemens.com/mcms/human-machine-interface/en/operator-devices/advanced-hmi-panel-based/comfort-panels/Pages/Default.aspx>



## Siemens AG

Energy Management Division  
Freyeslebenstraße 1  
91058 Erlangen, Germany

SICAM A8000 Profile\_HMI.docx  
Printed in Germany | © 11.17 Siemens AG

E-Mail: [support.energy@siemens.com](mailto:support.energy@siemens.com)  
Tel: +49 180 524 70 00

For all products using security features of OpenSSL, the following shall apply:

This product includes software developed by the OpenSSL Project for use in the OpenSSL Toolkit ([www.openssl.org](http://www.openssl.org)), cryptographic software written by Eric Young ([eay@cryptsoft.com](mailto:eay@cryptsoft.com)) and software developed by Bodo Moeller.