

SIEMENS

SICAM Device Manager

Version 1.00

Product Information

 **Note**

This Product Information contains important information about SICAM Device Manager V1.00.

It is part of the product supplied. In case of uncertainties this information should be considered more up-to-date than any other information.

Disclaimer of Liability

This document has been subjected to rigorous technical review before being published. It is revised at regular intervals, and any modifications and amendments are included in the subsequent issues. The content of this document has been compiled for information purposes only. Although Siemens AG has made best efforts to keep the document as precise and up-to-date as possible, Siemens AG shall not assume any liability for defects and damage which result through use of the information contained herein.

This content does not form part of a contract or of business relations; nor does it change these. All obligations of Siemens AG are stated in the relevant contractual agreements.

Siemens AG reserves the right to revise this document from time to time.

Document Release E50417-X8940-C618-A1 Edition 06/2016

Copyright

Copyright © Siemens AG 2016. All rights reserved.

The disclosure, duplication, distribution and editing of this document, or utilization and communication of the content are not permitted, unless authorized in writing. All rights, including rights created by patent grant or registration of a utility model or a design, are reserved.

Registered Trademarks

SICAM is a registered trademark of Siemens AG. Any unauthorized use is illegal. All other designations in this document can be trademarks whose use by third parties for their own purposes can infringe the rights of the owner.

Table of Contents

1	Contents of the Consignment.....	6
2	Open Source Software	7
3	Preconditions	8
3.1	Installation	8
3.2	Software.....	8
3.3	Hardware	9
4	Installation	9
4.1	ALM Installation	9
4.2	SICAM Device Manager Installation	10
4.3	Installing Licenses	10
5	Removing Products.....	11
5.1	Removing ALM.....	11
5.2	Removing SICAM Device Manager	11
6	Compatibility	12
7.1	Antivirus scan.....	12
8	Support	12

1 Contents of the Consignment

Included in contents of the consignment:

- 1 DVD SICAM Device Manager V1.00
 - 1 License Agreement
- USB stick with license key
 - Certificate of License
- 1 Product Information
- 1 Certificate of License



Note

The installation notes in this document contain important information required to install SICAM Device Manager. Read these notes **before** installing the software.

2 Open Source Software

Among other things, this product contains Open Source Software that was developed by third parties. The Open Source Software included with this product and the relevant Open Source Software license agreement can be found in `Readme_OSS`.

The Open Source Software program is protected by copyright. You are permitted to use the Open Source Software according to the Open Source Software license agreement. Should contradictions occur between the Open Source Software license conditions and the Siemens license conditions applicable to the product, the Open Source Software license agreement with respect to the Open Source Software shall prevail.

The Open Source Software is provided free of charge. If stipulated by the Open Source Software license agreement, the source text of the software is available until the end of the third year after purchasing the product. Shipping charges will apply separately. We are liable for the product including the Open Source Software according to the license agreement for the product. Any liability arising from the use of the Open Source Software that exceeds the intended program flow of the product, as well as liability for defects that were caused by changes made to the Open Source Software, is excluded. If the product was modified, we cannot provide technical support.

3 Preconditions

3.1 Installation

For the installation of the SICAM Device Manager, the following preconditions are required:

- Windows Administrator permissions
(Read and Write permissions on the file system and the Windows Registry)
- NTFS file system
- Drive C:\ must exist
- DirectX features enabled

3.2 Software

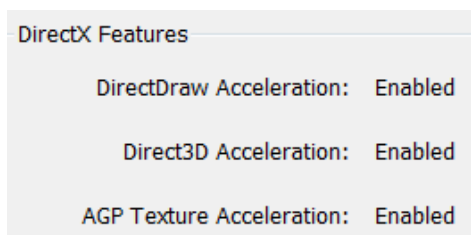
For the operation of the SICAM Device Manager, the following 64-bit operating systems are supported:

Configuration	Operating system
SICAM Device Manager	Windows 7 Windows 8.x Windows 10 Windows 2008 Server R2 Windows 2012 Server R2
DirectX Features enabled	DirectX version depends on your OS

- For the use of SICAM Device Manager the following preconditions are required:
- User permissions of the group "User" under Microsoft Windows
- Installed TCP/IP

In order to allow correct functioning of the SICAM Device Manager make sure that **DirectX Features** are enabled on your computer.

- Click the *Start* button, type **dxdiag** in the search box, and then press *Enter*.
- Click the *System* tab, and then, under *System Information*, check the DirectX version number, e.g.: *DirectX 11*.
- Click *Next page*
Under DirectX Features all features are enabled:



DirectX Features	
DirectDraw Acceleration:	Enabled
Direct3D Acceleration:	Enabled
AGP Texture Acceleration:	Enabled

3.3 Hardware

To work with SICAM Device Manager V1.00, you need a PC or laptop computer with the following minimum specifications:

System	RAM (main memory)	Disk (GB)	CPU	
Notebook / Workstation	≥ 4 GB	≥ 30	Core i5	recommended requirement

Note: The memory requirements and also the hard disk space of the operating system and all applications running parallel to the SICAM Device Manager (e.g. Microsoft Office etc.) and/or memory usage of onboard graphic adapters have to be considered.

- DVD-ROM drive
- USB port

4 Installation

4.1 ALM Installation

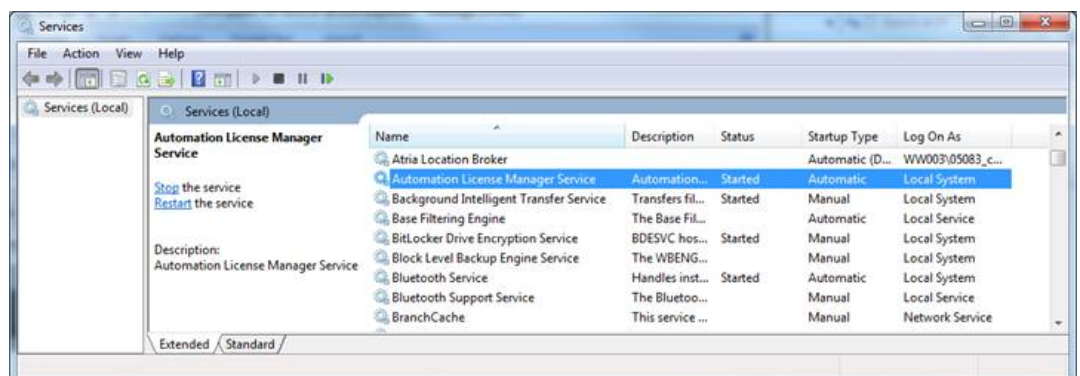
Automation License Manager will be installed automatically during installation of SICAM Device Manager.

Important information on installing and using the ALM is provided in ***almreadme.rtf*** after installation of SICAM Device Manager:
C:/Program Files/Siemens/Automation License Manager.

The file ***ReadMe_OSS*** can be found here as well.

Note that any (re-)installation of ALM requires a reboot.

After reboot, ALM service is running. Open services.msc to check the running ALM service:



4.2 SICAM Device Manager Installation



Note

Microsoft Visual C++ Redistributable (x64) and Siemens Automation License Manager V5.3 + SP3 will be installed automatically.

For the installation of SICAM Device Manager Version 1.00 **Windows Administrator permissions** are required.

- Insert the SICAM Device Manager DVD into a DVD drive.
- Start the setup program with the MS Windows Explorer by double-clicking on the SETUP.EXE in the root directory of your DVD drive.
- Follow the instructions on the screen in order to install the SICAM Device Manager.

The installation of SICAM Device Manger requires a reboot only when ALM was uninstalled before.

- Start SICAM Device Manager from the Start menu -> SIEMENS Energy

or

- Double click on the icon SICAM Device Manager on your desktop:



Location: sicdm (C:\Program Files\Siemens Energy\SICAM\Device Manager\bin)

Note: The file **ReadMe_OSS** of SICAM Device Manager can be found in the installation directory.

4.3 Installing Licenses

General Information about SICAM Device Manager Licenses

Each ordered license allows the usage of SICAM Device Manager on one system.

Different licenses providing different functionality of SICAM Device Manager are available.

SICAM Device Manager licenses are delivered on USB sticks. The license is transferred onto a system using the so called Automation License Manager (ALM).

Each time SICAM Device Manager starts and recognizes that no license key is installed so far, it provides you with several options:

1. Install a license key for SICAM Device Manager (**SICAM_Device_Manager-Basic**)
2. Start a trial period (**SICAM_Device_Manager-Trial**), which allows you to use SICAM Device Manager in Trial mode for 21 days on the system. After 21 days, you need either a valid license key for SICAM Device Manager to continue working.

Installing License from USB Stick

In order to install a license key, you simply plug the USB stick, which was packaged with your SICAM Device Manager delivery, into a USB port of your computer.

The USB stick is immediately recognized and displayed by the Automation License Manager.

In the tree on the left, select the USB stick containing the licenses. The list of available licenses will be displayed on the right side of the Automation License Manager.

1. Select the appropriate license with the mouse.
2. Right-click to show the context menu. Select Transfer...
3. In the dialog shown, select any of your local hard drives.
4. Click OK to transfer the license to your hard disk
5. Close the Automation License Manager and return to the SICAM Device Manager window.

Note: Installing license keys is also possible using Drag-and-Drop and Copy-and-Paste operations, refer to almreadme.rtf

5 Removing Products

Both ALM and SICAM Device Manager have to be removed separately.

5.1 Removing ALM

- In the *Control Panel -> Programs and Features*, select *Siemens Automation License Manager*.
- In the context menu, select *Uninstall*
- Follow the instructions on the screen in order to remove ALM.

After removing ALM a reboot is necessary.

5.2 Removing SICAM Device Manager



Note

Before removing SICAM Device Manger it is recommended to create a backup. All SICAM Device Manager data will be removed and cannot be recovered.

- In the control panel -> Programs and Features, select Siemens SICAM Device Manager
- In the context menu, select Uninstall / Change
- Click Next
- In the Repair or Remove Installation dialog, check the radio button Remove
- Click Next
- Follow the instructions on the screen in order to remove SICAM Device Manager
- Click Finish

6 Compatibility

7.1 Antivirus scan

The SICAM Device Manager is compatible with most antivirus programs. We recommend **Trend Micro Office Scan**.

8 Support

For questions about SICAM Device Manager, please contact the Siemens Customer Support Center.

Phone: +49 (0) 180 524 7000
Fax: +49 (0) 180 524 2471
(charges depending on provider)

E-mail: support.energy@siemens.com
Internet: <http://www.siemens.com/energy-support>

