

SICAM TOOLBOX II
Version 6.00
Installation Manual

D3E-021-1.00

1



Note

Please observe Notes and Warnings for your own safety.

Disclaimer of Liability

Although we have carefully checked the contents of this publication for conformity with the hardware and software described, we cannot guarantee complete conformity since errors cannot be excluded.

The information provided in this manual is checked at regular intervals and any corrections that might become necessary are included in the next releases. Any suggestions for improvement are welcome.

Subject to change without prior notice.

Issuing date 12-2015

Copyright

Copyright © Siemens AG 2015

The reproduction, transmission or use of this document or its contents is not permitted without express written authority. Offenders will be liable for damages. All rights, including rights created by patent grant or registration of a utility model or design, are reserved.

Table of Contents

1	Contents of the consignment	4
2	Preconditions	5
2.1	Installation	5
2.2	Software	6
2.3	Virtualization.....	7
2.4	Hardware	8
3	Installation	9
3.1	Default Share for Oracle Database.....	9
3.2	SICAM TOOLBOX II Installation.....	12
4	Adding or Removing SICAM TOOLBOX II Features.....	14
5	Update	15
5.1	Backup of engineering data	16
5.2	Removing of previous version 5.xx inclusive database	18
5.3	Restore of engineering data.....	19
6	Remove a SICAM TOOLBOX II version 6.00.....	20
7	Database backup for disaster recovery.....	21
8	Compatibility.....	22
8.1	SICAM TOOLBOX II versions.....	22
8.2	Antivirus scan.....	23
9	Configuration - server / client	24
10	WEB Application Server	25

1 Contents of the consignment

Included in contents of the consignment:

- 1 License Certificate
- 1 License Card
- 1 USB flash drive SICAM TOOLBOX II version 6.00 for Microsoft Windows 64-bit operating system
- 1 Booklet (License Agreement)
- 1 Booklet (Installation manual)

Optionally included in contents of the consignment:

- USB dongle for CAEx plus (for SICAM RTUs)



Note

The installation notes in this document contain important information required to install SICAM TOOLBOX II. Read these notes **before** installing the software.

2 Preconditions

2.1 Installation

For the installation of the SICAM TOOLBOX II, the following preconditions are required:

- USB connector
- Windows Administrator permissions (Read and Write permissions on the file system and the Windows Registry)
- There is no version of a SICAM TOOLBOX II installed. (see *chapter 3, Installation*)
- NTFS file system
- Drive C:\ must exist
- No installation from UNC-path (e.g.: \\server\share), path with drive letter is required
- No white-spaces allowed in installation path
- Administrative share (C\$) for system drive must exist (see *chapter 3.1, Admin Share for Oracle Database*)
- Minimum 30 GB of free hard disk space
- Minimum 4 GB installed RAM



Note

Microsoft Visual C++ 2013 and Windows Installer 5 will be installed automatically.

2.2 Software

For the operation of the SICAM TOOLBOX II, the following 64-bit operating systems are supported:

Configuration	Operating system
SICAM TOOLBOX II Local configuration and Data Server configuration	Windows 7 Windows 8.1 Windows 10 Windows 2008 Server R2 Windows 2012 Server R2
SICAM TOOLBOX II WEB Application Server	Windows 2008 Server R2 with RDS ¹⁾ Windows 2012 Server R2 with RDS ¹⁾

¹⁾ RDS = Remote Desktop Services

For the use of SICAM TOOLBOX II the following preconditions are required:

- **User** permissions of the group "User" under Microsoft Windows
- Installed TCP/IP
- Required Windows Regional Options:
 - 'Dot' for decimal separating character and 'comma' for the thousands separating character must be different.
 - No 'single inverted comma' may be used as separating character.
- Use of Windows Fonts in normal size (96 DPI)

- To play online help movies and read related documentation these applications are required:
 - Installed current Microsoft Windows Media Player (www.microsoft.com)
 - Installed current Adobe Acrobat Reader (www.adobe.com)

2.3 Virtualization

The SICAM TOOLBOX II version 6.00 can be virtualized with several host/guest configurations (Windows 7, Windows 8.1, Windows 10, Windows 2008 Server R2, Windows 2012 Server R2) in an environment of VMware Inc. (www.vmware.com) based on VMware Workstation 11.x and from VMware ESX 4.1

 **Note**

The minimum requirements for the operation of the VMware Guest with regard to processor capacity (performance), main memory and hard disc memory are the same as the requirements in the table in *chapter 2.4, Hardware*.

2.4 Hardware

The hardware requirements differ depending on the operation of the SICAM TOOLBOX II.

Thereby it is to distinguish, whether the SICAM TOOLBOX II is operated on a local PC or on a client/server configuration.

In addition, it should be pointed out, that with the memory configuration of the PC, the memory requirements and also the hard disk space of the operating system and all applications running parallel to the SICAM TOOLBOX II (e.g. Microsoft Office etc.) and/or memory usage of onboard graphic adapters have to be considered.

System	RAM (main memory)	Disk (GB)	CPU	
Notebook / Workstation	≥ 4 GB	≥ 160	Core i5	recommended requirement
Server	≥ 32 GB	2 x 500 (RAID)	XEON	recommended requirement

CAEx plus (for SICAM RTUs)

For CAEx plus a dongle for USB is required. Therefore a free USB slot is necessary.

3 Installation

3.1 Admin Share for Oracle Database



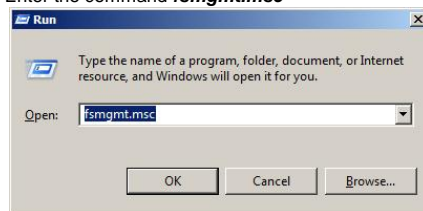
Note

Make sure that the registry key *HKEY_LOCAL_MACHINE\SYSTEM\CurrentControlSet\Services\LanmanServer\Parameters\AutoShareServer* is set to 1 (may be administrated by your IT responsible).

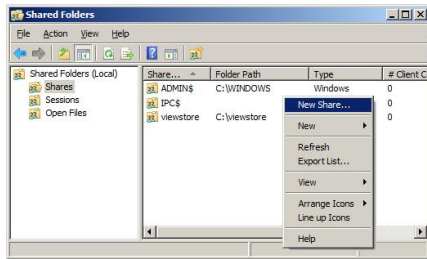
The Oracle Database is installed with SICAM TOOLBOX II. It requires a admin share on system drive C: .

The following example shows the creation of administrative share C\$.

- Enter the command *fsmgmt.msc*



- Select **New Share...** in the *Shared Folders* window



- Follow the instructions in the Shared Folder Wizard



- Enter C:\ in the "Folder path:" and click **Next**

Type the path to the folder you want to share, or click Browse to pick the folder or add a new folder.

Folder path:

- Enter C\$ in "Share name:" and click **Next**

Type information about the share for users. To modify how people use the content while offline, click Change.

Share name:

Share path:

- Set permission **Administrators have full access; other users have read-only access.**

All users have read-only access

Administrators have full access; other users have read-only access

Administrators have full access; other users have no access

Customize permissions

- Click **Finish** to create the admin share.

3.2 SICAM TOOLBOX II Installation

For the installation of SICAM TOOLBOX II Version 6.00 **Windows Administrator permissions** are required and no other SICAM TOOLBOX II version has to be installed on host.

Note

A detailed description of all preconditions can be found in *chapter 2, Preconditions*. (e.g. Create Admin Share C\$ on system drive C:)

To change from the previous SICAM TOOLBOX II version 5.xx to SICAM TOOLBOX II version 6.00 see *chapter 5, Update*.

- Insert the SICAM TOOLBOX II USB flash drive into a USB connector. The SICAM TOOLBOX II setup program will guide you through the installation. The installation installer starts automatically after inserting the SICAM TOOLBOX II USB flash drive. If you have disabled this function on your computer, start the setup program with the MS Windows Explorer by double-clicking on the SETUP.EXE in the root directory of your USB flash drive.
- Follow the instructions on the screen in order to install the SICAM TOOLBOX II.
- Read and accept all license conditions of installation wizard and enter user name and organization.

- You can choose between the following two types of installation:
 - Standard**
Installation of a local SICAM TOOLBOX II with the packages EM II, PSR II, OPM II and CAEx plus.
 - User-defined**
Select the packages and tools to be installed (EM II, PSR II, OPM II, CAEx plus, Live Update, CAEx Safety). Select a server-configuration for the installation optionally.
- Enter the necessary activation keys.
- Please choose a language to install SICAM TOOLBOX II. All desktop icons are installed in this language and cannot be changed later. During working with SICAM TOOLBOX II the current language can be changed with the toolset SICAM TOOLBOX II preset to another language (German or English).
- Click **Install** to start the installation. Depending on the installed components, a reboot of the system might be required and will be initiated by the setup.
- Start SICAM TOOLBOX II from the Start menu. Choose Start > Siemens Energy > SICAM TOOLBOX II and the adequate tool.

 **Note**

After Installation by firewall blocked "java-messages" can be **canceled** without impact of successful result of SICAM TOOLBOX II installation.

4 Adding or Removing SICAM TOOLBOX II Features

You have the possibility of subsequently adding or removing individual tools (e.g. CAEx plus). To do this, choose the following method:



Note

Adding or Removing of SICAM TOOLBOX II features is only possible with Windows Administrator permissions. The local database has to be preset.

1. Select in "Control Panel" the entry "Programs and Features" (Windows 7). Select the entry **SICAM TOOLBOX II** and click on the button or pop up menu **CHANGE**.
2. Choose in the following dialog the option **CHANGE** and click on **NEXT**.
3. Activate or deactivate individual tools and click on **NEXT**.
4. Enter the necessary activation key and click on **NEXT**. The SICAM TOOLBOX II setup procedure executes all changes.
5. After successful adding of one or several features the last maintenance release and the last hotfix of current version has to be installed again.

5 Update

This chapter describes only an update from SICAM TOOLBOX II version 5.xx to version 6.00.

Before updating the SICAM TOOLBOX II a database backup has to be done for a disaster recovery (see *chapter 7, Database backup for disaster recovery*).

The following steps are necessary to update from an older SICAM TOOLBOX II version to SICAM TOOLBOX II version 6.00:

1. **Backup all engineering data with Data Distribution Center**
(see *chapter 5.1, Backup of engineering data*).
2. **Remove installed SICAM TOOLBOX II 5.xx version inclusive database**
(see *chapter 5.2, Removing of previous version 5.xx inclusive database*).
3. **Installation of SICAM TOOLBOX II version 6.00**
(see *chapter 3, Installation*).
4. **Restore of engineering data with Data Distribution Center**
(see *chapter 5.3, Restore of engineering data*).

5.1 Backup of engineering data

Two possibilities to backup engineering data exist:

- Backup of project relevant data **per** plant
This data backup practice is recommended for SICAM TOOLBOX II installations (PC) with up to 3 plants.
- Backup of project relevant data of **all** plants of local database
This data backup practice is recommended for SICAM TOOLBOX II installations (Server) with more than 3 plants.

Backup of project relevant data per plant

To backup project relevant data per plant use standard function "**Export**" of Data Distribution Center in menu "action". The backup (*.001 files) contains:

- Plant management
- System technique
- Process technique
- Display overview
- CAEx plus project library
- Master data
- PSR II data
- Logbook

Backup of project relevant data of all plants of local database

Backup of project relevant data of all plants of local database with function "**Export database**" of Data Distribution Center in menu "Tools" in an existing empty directory.

Project relevant data of all plants including firmware master data and firmware codes of the entire database can be saved, using the feature "**Export database**".

This backup (file structure with subdirectories) contains all project relevant data of all plants.



Note

- The local database must be preset.
 - The function "export database" can not be executed in a terminal session.
 - Windows Administrator permissions are necessary.
-

5.2 Removing of previous version 5.xx inclusive database

Note

Before removing older versions it is recommended to create a backup for disaster recovery (see *chapter 7, Database backup for disaster recovery*).

All SICAM TOOLBOX II data are removed unrecoverable.

The directory C:\SAT inclusive all sub directories is also removed completely.

The following steps are necessary to remove SICAM TOOLBOX II version 5.xx inclusive database.

1. Click on the Windows START-Symbol and then in the context menu on SETTINGS and CONTROL PANEL.
2. Click on the symbol ADD OR REMOVE PROGRAMS, select the entry SICAM TOOLBOX II and click on the button or context menu CHANGE.
3. Mark REMOVE and click on NEXT.
4. Confirm the inquiry to delete the local database with **YES** and click on NEXT.
5. Confirm the additional security inquiry to remove the entire SICAM TOOLBOX II and the local database with **YES** and click on NEXT.
6. The removal of the SICAM TOOLBOX II with the deletion of the local database is started with the button REMOVE.

5.3 Restore of engineering data

Restore of project relevant data per plant

To restore project relevant data (*.001 files) per plant use standard function "**Import**" of Data Distribution Center in menu "action".

Restore of project relevant data of all plants in local database

To restore project relevant data of all plants of local database use function "**Import database**" of Data Distribution Center in menu "Tools".

 **Note**

- The local database must be preset.
 - Before restoring no engineering data may exist in the database.
 - Do not import engineering data in a terminal session.
-

6 Remove a SICAM TOOLBOX II version 6.00



Note

Please do not forget to backup all engineering data with **Data Distribution Center** before removing SICAM TOOLBOX II.

Detail information see *chapter 5.2*.

7 Database backup for disaster recovery

If a SICAM TOOLBOX II installation must be recovered a database backup can be created as described below.

To back up the whole database use the command **TBIIDBBACKUP** and enter a backup directory.

Start the command **TBIIDBBACKUP** with DOS Command Prompt in the root directory of SICAM TOOLBOX II USB flash drive.

Example: `TBIIDBBACKUP D:\TBII_DB_BACKUP`

Note

Restore of a database

If you have any question about restoring a database backup please contact our Customer Support Center:

Tel: +49 (0)180 524 70 00

Fax: +49 (0)180 524 24 71

E-Mail: support.energy@siemens.com

8 Compatibility

8.1 SICAM TOOLBOX II versions

The engineering and consequently the acquisition and modeling of the plant data represent high value capital goods.

From this consideration it naturally follows, that existing engineering data of the existing SICAM TOOLBOX II versions 5.xx can continue to be used and can be imported into the new SICAM TOOLBOX II version 6.00.

Data, created with SICAM TOOLBOX II version 6.00 **cannot** be imported into earlier versions (e.g. version 5.xx).

Compatibility of SICAM TOOLBOX II-versions related to the feature of the SICAM TOOLBOX II version V6.00 "Export and import database":

Export from version	Import in target version V6.00	Import in target version V5.xx
V4.10 SP3 HF14	NOT supported	supported
≥V5.00 HF13, incl. firmware master data and firmware codes	supported	supported
V6.00, incl. firmware master data and firmware codes	supported	NOT supported

8.2 Antivirus scan

The SICAM TOOLBOX II is compatible with most antivirus programs. We recommend **Trend Micro Office Scan**.

9 Configuration - server / client

It is possible to operate a SICAM TOOLBOX II Installation as data server configuration. For details see the SICAM TOOLBOX II **Online Help** (*chapter General | configuration – server / client*).

A detailed description regarding the security of the configuration of the server and the client can be found in the **Online Help** (*chapter General | Security Settings*).

10 WEB Application Server

It is possible to operate the SICAM TOOLBOX II with the Remote-Desktop-Connection. Thereby the remote desktop clients work with a central terminal-server, on which the SICAM TOOLBOX II is installed.

On the client, no SICAM TOOLBOX II installation is necessary. The function can be used from Microsoft standard application **Remote-Desktop-Connection** (All Programs | Accessories | Communications).

As server, a Windows server with **Remote Desktop Services** has to be installed (see supported operating systems *chapter 2.2, Software*).

A detailed description of the configuration of the WEB Application Server and the client can be found in the **Online Help** (*chapter WEB Application Server*).

 **Note**

WEB Application Server with CAEx plus requires in addition a special TBII_WEB-CAEx_plus_xUser web-server license. This also includes a special CAEx plus dongle.

— |

| —

— 26 |

D3E-021-1.00 — |