

IF IN DOUBT ASK  
DO NOT SCALE

A

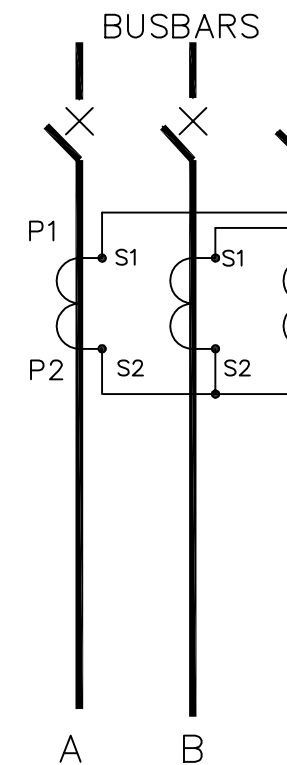
B

C

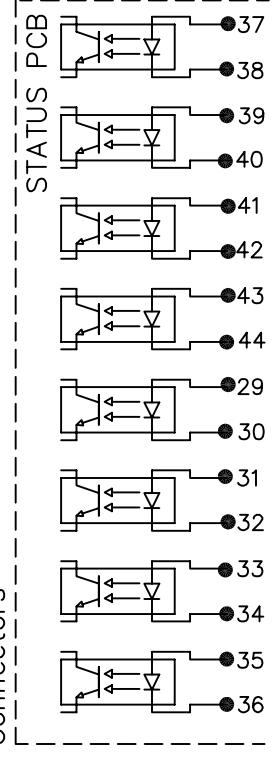
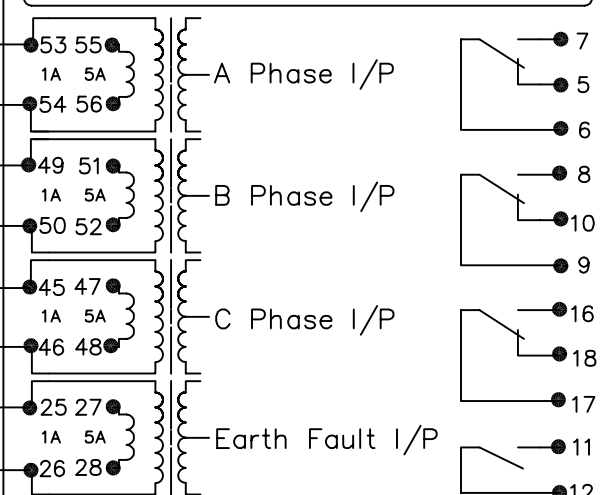
D

E

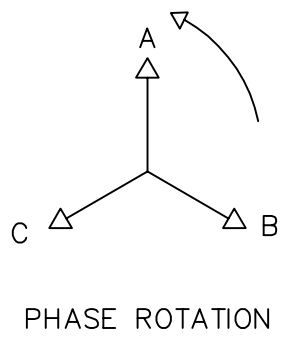
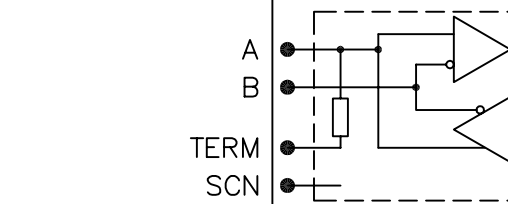
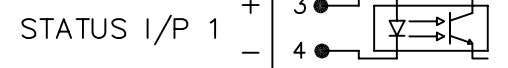
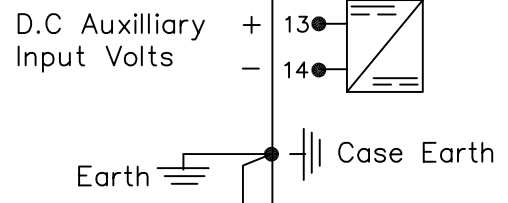
F



DCD41xC (ARGUS 1) MODULAR SIZE 6 CASE



- 7 RELAY 1
- 5
- 6
- 8 RELAY 2
- 10
- 9
- 16 RELAY 3
- 18
- 17
- 11 RELAY 4
- 12
- 19 RELAY 5
- 20
- 21 RELAY 6
- 22
- 23 RELAY 7
- 24
- + STATUS I/P 9
- 37
- 38
- + STATUS I/P 8
- 39
- 40
- + STATUS I/P 7
- 41
- 42
- + STATUS I/P 6
- 43
- 44
- + STATUS I/P 5
- 29
- 30
- + STATUS I/P 4
- 31
- 32
- + STATUS I/P 3
- 33
- 34
- + STATUS I/P 2
- 35
- 36



MATERIAL:

Dimensions in millimetres : Surface texture in micrometres.  
Machine where marked ✓  
For explanation of dimensions, tolerances, notes etc. see B.S.308.  
Limit on untoleranced unmachined dimensions ± \_\_\_\_\_  
Limits on untoleranced machined dimensions to B.S.4500;  
i.e. up to 6±0.1; over 30 to 120±0.3; over 315±0.8;  
over 6 to 30±0.2; over 120 to 315±0.5;  
General unmachined angular tolerance ± \_\_\_\_\_

Finish: \_\_\_\_\_  
Treatment: \_\_\_\_\_

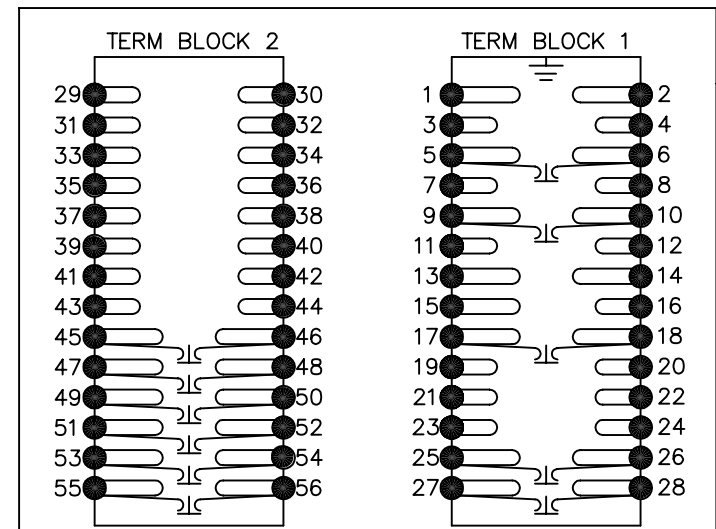
Title:  
TYPICAL SCHEMATIC DIAGRAM 3 PH + EF RS485  
ARGUS 1 NUMERIC OVERCURRENT PROTECTION EPSILON

**VATECH REYROLLE**  
**AUTOMATION, CONTROL & PROTECTION**

Original Scale:  
NTS

First used on:  
Similar Articles: 2434W10058  
Supersedes:  
Drg. No.  
**2434W10104**

TERMINAL BLOCKS VIEWED FROM REAR



- KEY
- 1 Short Terminals
  - 2 Long Terminals
  - 3 CT Shorting Links

NOTES

1. CT CIRCUITS ARE SHOWN CONNECTED TO RELAY 1 AMP TAP. USE ALTERNATIVE TAP FOR 5AMP RATED CTs.
2. CT & EARTH CONNECTIONS ARE TYPICAL ONLY.
3. FOR TERMINAL DIAGRAM SEE 2434W50008 (A2).
4. DRG SHOWS OPTION C (7 OUTPUTS, 9 INPUTS).

FOR INFORMATION ONLY  
UNCONTROLLED COPY  
NOT SUBJECT TO UPDATE

Copyright © 2004 VATECH REYROLLE ACP Ltd. Hebburn

1	12/08/04	CHANGE NOTED
ISSUE	DATE	NOTED