

IF IN DOUBT ASK  
DO NOT SCALE

A

B

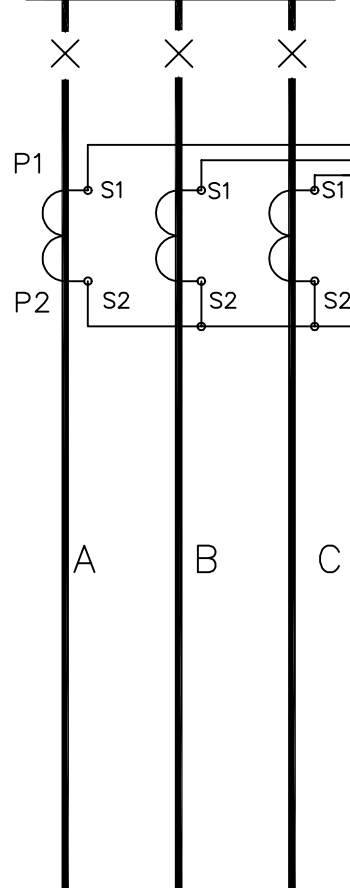
C

D

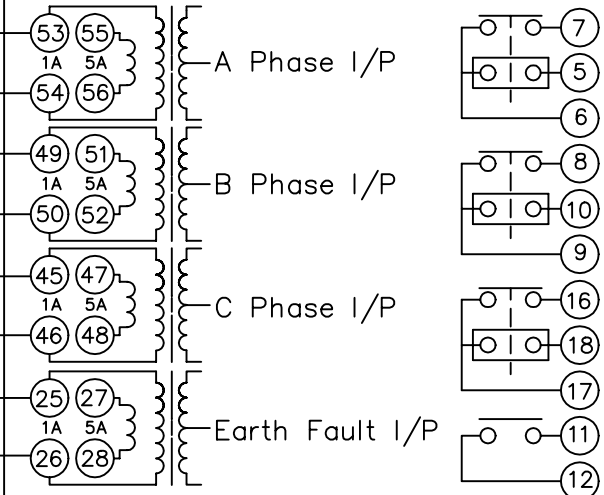
E

F

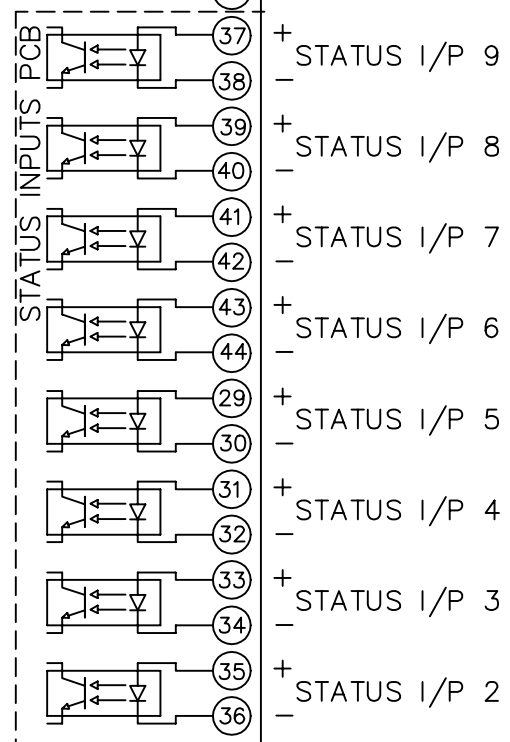
BUSBARS



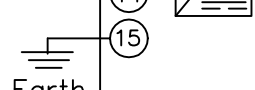
DCD41x C R6 Case Size



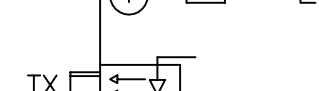
- RELAY 1 (Terminals 7, 5, 6)
- RELAY 2 (Terminals 8, 10, 9)
- RELAY 3 (Terminals 16, 18, 17)
- RELAY 4 (Terminals 11, 12)
- RELAY 5 (Terminals 19, 20)
- RELAY 6 (Terminals 21, 22)
- RELAY 7 (Terminals 23, 24)



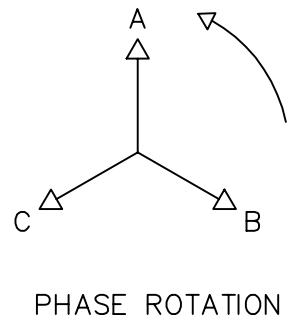
D.C Auxilliary Input Volts  
+ (13)  
- (14)



Earth (15)  
STATUS I/P 1 + (3)  
- (4)



TX (Fibre-Optic SMA Connectors)  
RX

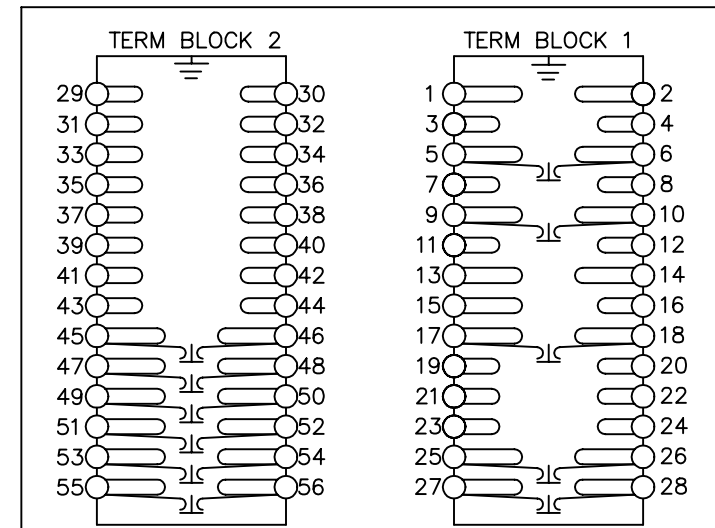


NOTES

- 1 CT CIRCUITS ARE SHOWN CONNECTED TO RELAY 1 AMP TAP. USE ALTERNATIVE TAP FOR 5AMP RATED CTs.
- 2 CT & EARTH CONNECTIONS ARE TYPICAL ONLY.
- 3 FOR TERMINAL DIAGRAM SEE 2434W20001 (A2)
- 4 DRG SHOWS OPTION C (7 O/P. 9 I/P).

**NOT SUBJECT TO UPDATE  
ONCE COPIED / PRINTED  
OR DOWNLOADED**

TERMINAL BLOCKS VIEWED FROM REAR



KEY

- 1 Short Terminals
- 2 Long Terminals
- 3 CT Shorting Links

MATERIAL:

Dimensions in millimetres : Surface texture in micrometres.  
Machine where marked ✓  
For explanation of dimensions, tolerances, notes etc. see B.S.308.  
Limit on untoleranced unmachined dimensions ± \_\_\_\_\_  
Limits on untoleranced machined dimensions to B.S.4500;  
i.e. up to 6±0.1; over 30 to 120±0.3; over 315±0.8;  
over 6 to 30±0.2; over 120 to 315±0.5;  
General unmachined angular tolerance ± \_\_\_\_\_

Finish: \_\_\_\_\_  
Treatment: \_\_\_\_\_

Title: TYPICAL SCHEMATIC DIAGRAM FOR 3 PHASE + E/F.  
DCD OVERCURRENT RELAY

**Reyrolle Protection  
Hebburn.**

Original Scale: NTS

First used on: \_\_\_\_\_  
Similar Articles: 2434W10014  
Supersedes: \_\_\_\_\_  
Drg. No. 2434W10035