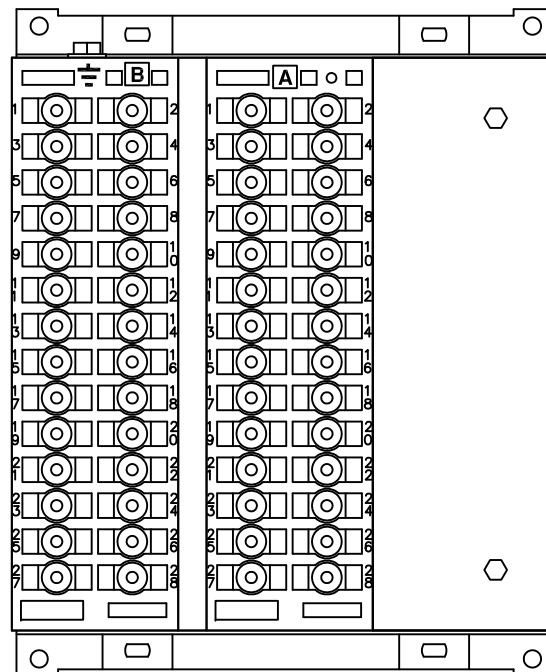


IF IN DOUBT ASK  
DO NOT SCALE

| ABBREVIATIONS |  |
|---------------|--|
| I             | CURRENT INPUTS                         |
| BI            | BINARY INPUTS                          |
| BO            | BINARY OUTPUTS                         |
| CO            | CHANGE OVER BINARY OUTPUT CONTACTS     |
| NO            | NORMALLY OPEN BINARY OUTPUT CONTACTS   |
| NC            | NORMALLY CLOSED BINARY OUTPUT CONTACTS |

| COMMUNICATIONS IDENTIFICATION |  |
|-------------------------------|--|
| COM1                          | RS485 (ON BLOCK 'B' TERMINALS 14,16,18 & 20) |
| COM2                          | USB TYPE 'B' PORT (ON RELAY FRONT LABEL)     |
|                               |  |



RELAY VIEWED FROM REAR

**NOTES**


1) TERMINALS RECOMMENDED ARE PRE-INSULATED & MUST BE CRIMPED USING APPROVED TOOLING. AMP PIDG OR PLASTI GRIP FUNNEL ENTRY (RING TONGUE) FOR M4 FIXING STUD.

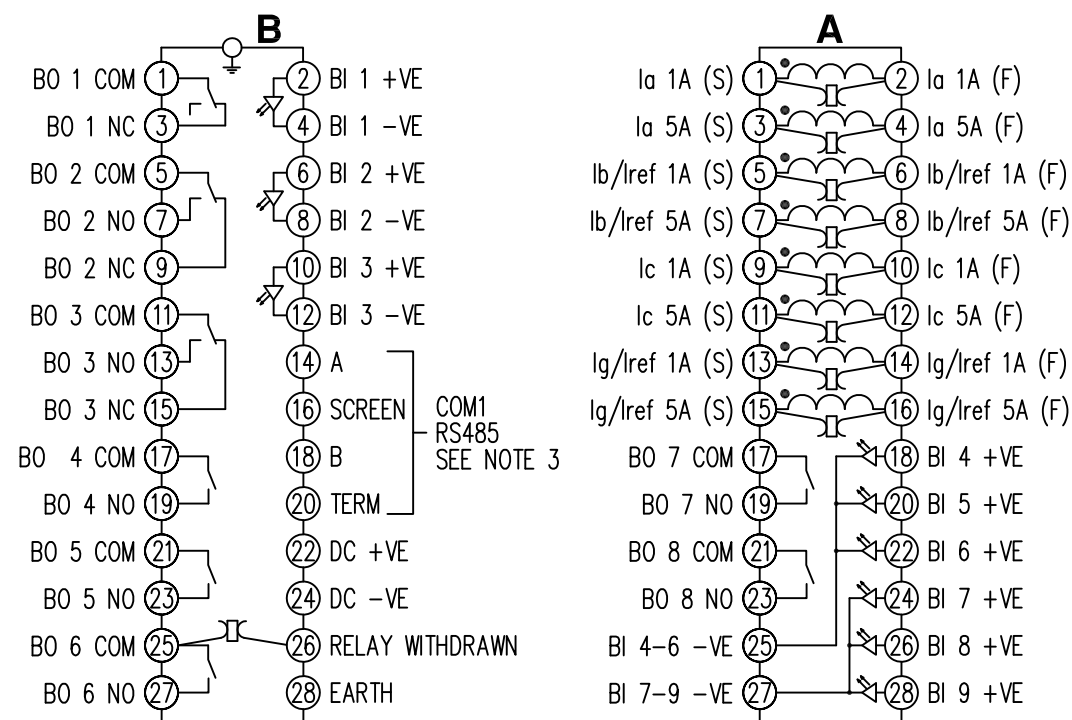
| SUPPLIER | PART NUMBER | CABLE SIZE              |
|----------|-------------|-------------------------|
| AMP      | 342103      | 0.25-1.6mm <sup>2</sup> |
| AMP      | 342143      | 1.0-2.6mm <sup>2</sup>  |

OR ANY OTHER MANUFACTURERS EQUIVALENT TERMINAL.

2) FOR OUTLINE & PANEL DRILLING, SEE 2995X10006 (A4).

3) CONNECTIONS TO THIS COMMUNICATIONS FACILITY IS BY SCREENED, TWISTED PAIR CABLE, ON SITE. WHEN WIRING OTHER FACILITIES ENSURE THAT THESE TERMINALS ARE NOT OBSCURED BY OTHER WIRE RUNS.

4) CONTACTS SHOWN THIS  ARE INTERNAL RELAY CASE ASSEMBLY AND CLOSE WHEN THE RELAY CHASSIS IS WITHDRAWN FROM THE CASE.



COMMS  
BLANKING  
PLATE

**NOT SUBJECT TO UPDATE  
ONCE COPIED / PRINTED  
OR DOWNLOADED**

**MATERIAL:**

Dimensions in millimetres : Surface texture in micrometres.  
Machine where marked ✓  
For explanation of dimensions, tolerances, notes etc. see B.S.308.  
Limit on untoleranced unmachined dimensions ± \_\_\_\_\_  
Limits on untoleranced machined dimensions to B.S.4500;  
i.e. up to 6±0.1; over 30 to 120±0.3; over 315±0.8;  
over 6 to 30±0.2; over 120 to 315±0.5;  
General unmachined angular tolerance ± \_\_\_\_\_

Finish:

Treatment:

Title:  
TERMINAL ID & WIRING DIAGRAM FOR 7SR23(DAD)  
4I,9BI,2CO,5NO,1NC,RS485, E6 CASE

**SIEMENS PROTECTION DEVICES LTD.**

Original Scale.

NTS

First used on:

Similar Articles:

Supersedes:

Drq. No.

2414W40001

|       |          |        |
|-------|----------|--------|
| 1     | 26/01/12 | CHANGE |
| ISSUE | DATE     | NOTED  |