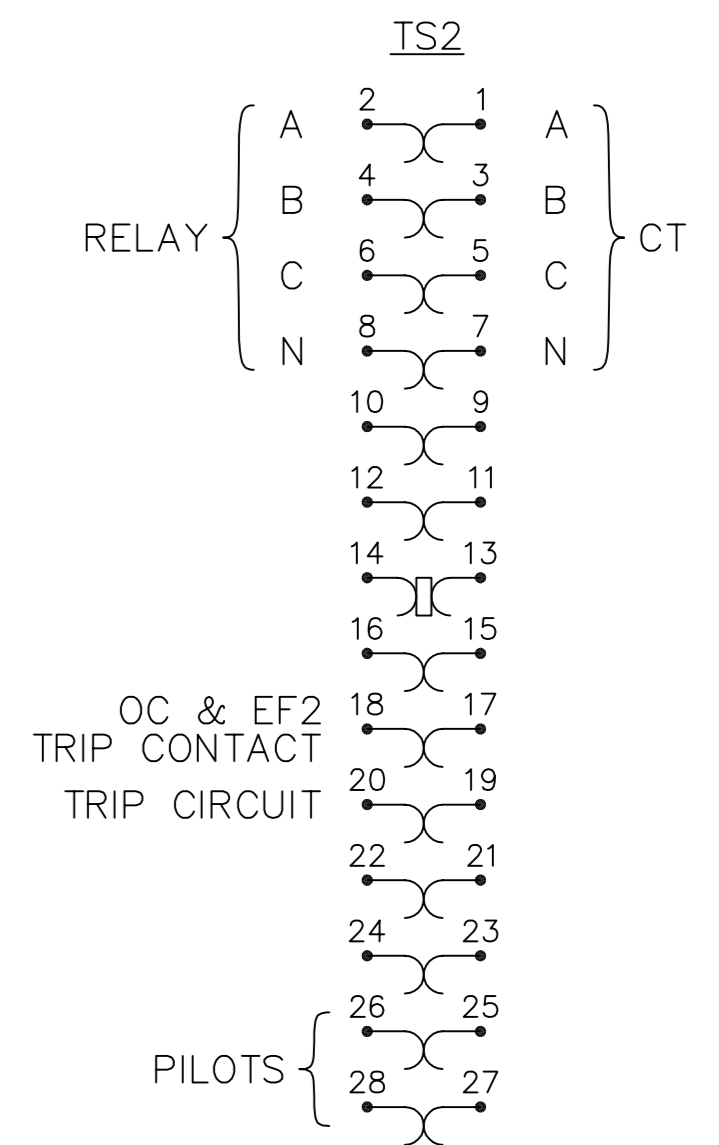
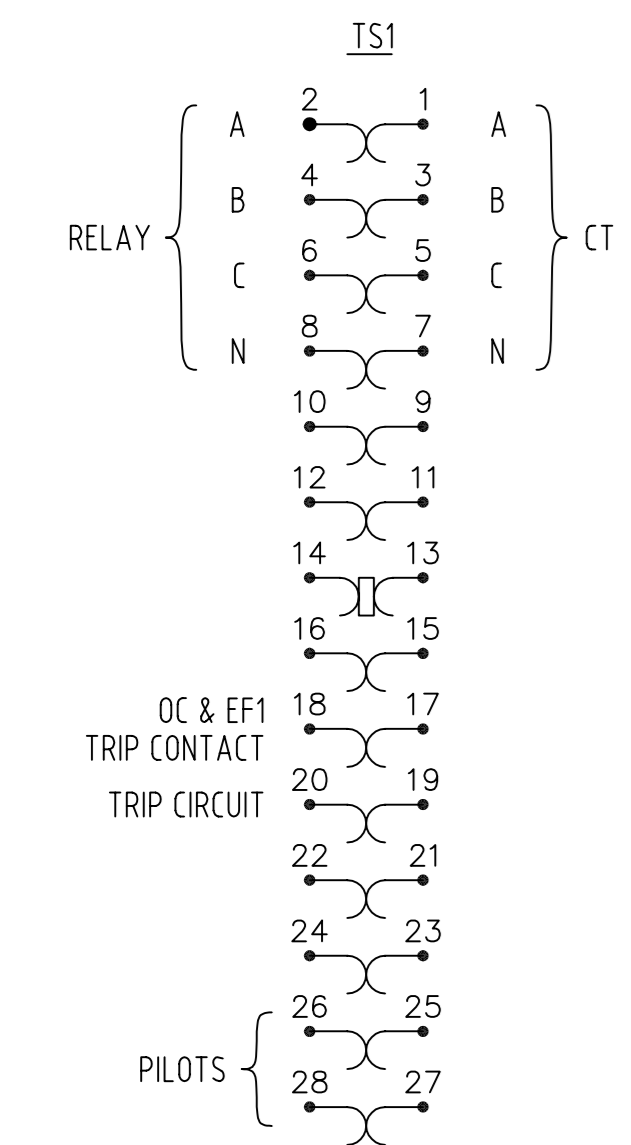
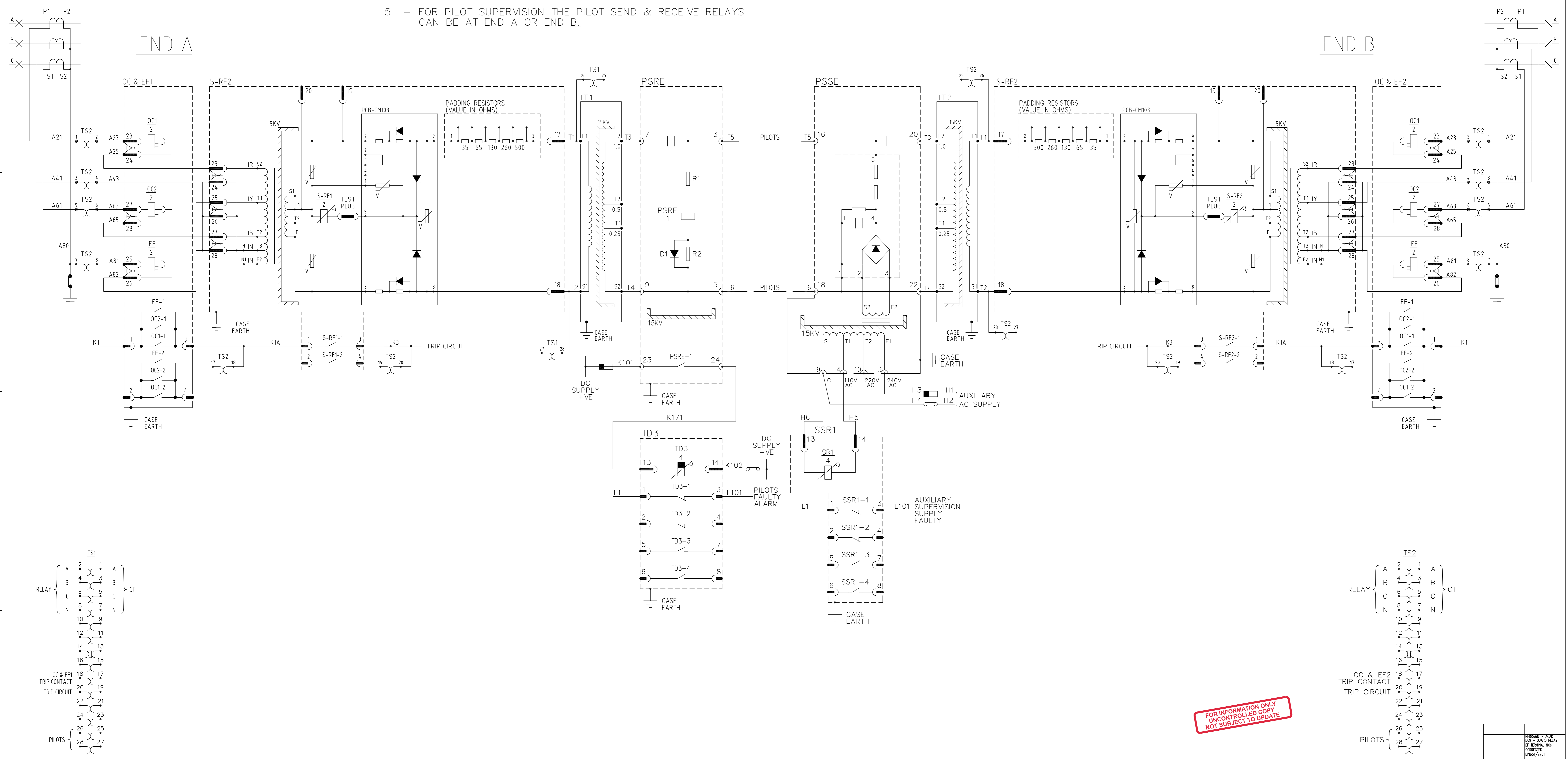


IF IN DOUBT ASK
DO NOT SCALE

SYSTEM	DEVICE	END	TYPE	DESCRIPTION
SOLKOR-RF	S-RF1	A	EPSILON - SOLKOR RF(5KV)	PILOT WIRE PROTECTION RELAY
	TS1	A	EPSILON - 2RMLG	TEST SOCKET
SOLKOR-RF	S-RF2	B	EPSILON - SOLKOR RF(5KV)	PILOT WIRE PROTECTION RELAY
	TS2	B	EPSILON - 2RMLG	TEST SOCKET
PILOT SUPERVISION (15KV)	PSRE TD3	A	VEDETTE (FRONT CONNECTED) - B75(15KV)	PILOT SUPERVISION - RECEIVE END RELAY
	PSSE SSR1	B	VEDETTE (FRONT CONNECTED) - B74	PILOT SUPERVISION - RECEIVE END RELAY
GUARD	OC & EF1	A	EPSILON - B69 (3 ELEMENTS 1 CASE)	PILOT SUPERVISION - SEND END RELAY
			SETTINGS TO BE SPECIFIED ON ORDER	SUPPLY SUPERVISION RELAY - SEND END RELAY
GUARD	OC & EF2	B	EPSILON - B69 (3 ELEMENTS 1 CASE)	OVERCURRENT AND EARTH FAULT RELAY
			SETTINGS TO BE SPECIFIED ON ORDER	OVERCURRENT AND EARTH FAULT RELAY

- NOTES:
- 1 - PRIMARY PLANT CONTACTS ARE SHOWN WITH THE PLANT OPEN. RELAYS ARE SHOWN SWITCHED OUT OR DE-ENERGISED.
 - 2 - THIS DIAGRAM SHOWS THE REYROLLE PROTECTION PREFERRED VERSION OF THE SOLKOR RF, 5KV & PILOT SUPERVISION & GUARD RELAYS. DELETE ANY ITEM WHERE NECESSARY.
 - 3a - EPSILON-CT SHORTING LINKS: -MAKE BEFORE LONG & SHORT TERMINAL BREAK
 - 3b - EPSILON-SHORT CONTACTS: -BREAK BEFORE LONG CONTACT BREAK
 - 3c - EPSILON-LONG CONTACTS: -LAST CONTACT TO BREAK
 - 3d - VEDETTE CASE CONNECTIONS
 - 4 - 15KV BARRIER
 - 5 - FOR PILOT SUPERVISION THE PILOT SEND & RECEIVE RELAYS CAN BE AT END A OR END B.



FOR INFORMATION ONLY
UNCONTROLLED COPY
NOT SUBJECT TO UPDATE