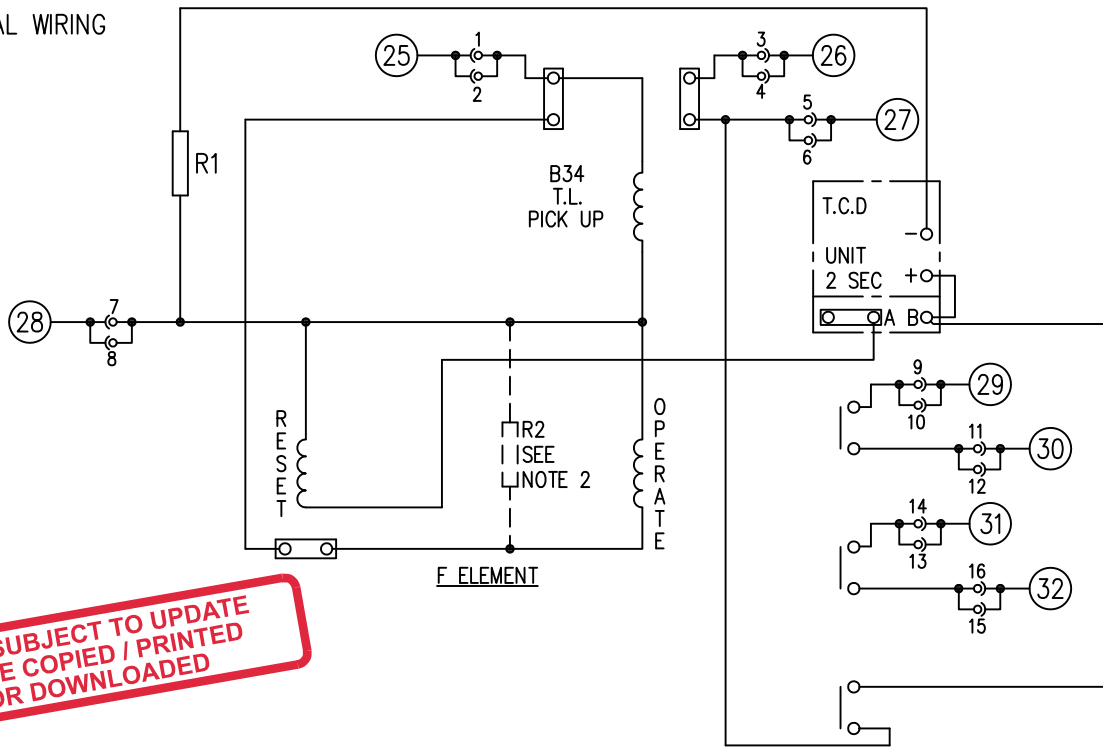
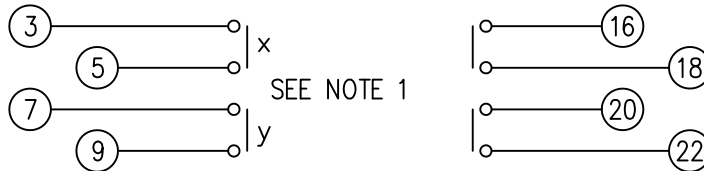


INTERNAL WIRING



**NOT SUBJECT TO UPDATE  
ONCE COPIED / PRINTED  
OR DOWNLOADED**

15KV INSULATION



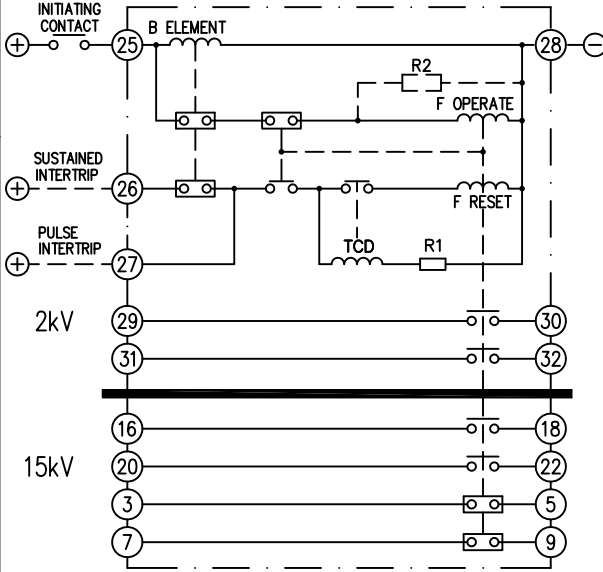
SEE NOTE 1

250	3K	AW1603	4 X 12K PARALLEL
220	2K5	AW1603	4 X 10K PARALLEL
125	1K5	AW3124	2 X 3K0 PARALLEL
50	390R	AW1603	390R 10FF
30	82R	AW1603	82R 10FF
VOLTAGE	RESISTANCE R1 VALUE	TYPE	RESISTOR VALUE AND CONNECTION

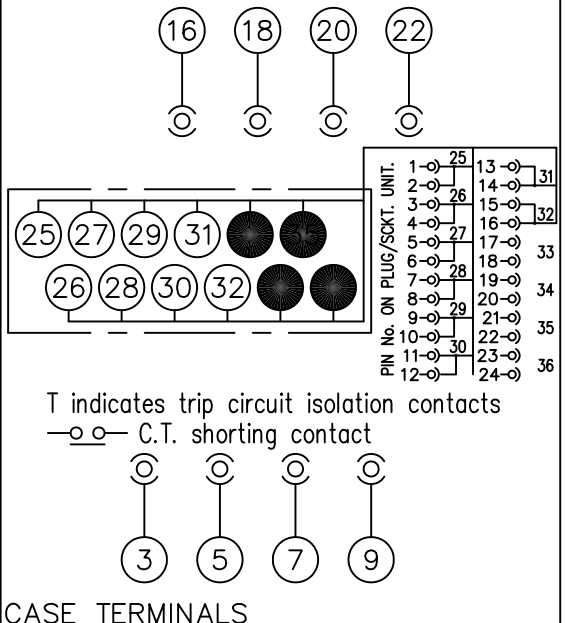
NOTE:

- FOR 2M-2B RELAY THE BREAK (B) CONTACTS ARE FITTED IN POSITIONS x & y.
- ONLY FITTED ON 125V RELAYS, RESISTOR R2 IS 1K.

SCHEMATIC



- make contact
- break contact
- c/o contact
- metering point
- plug bridge - shorting
- ext. conn
- unused conn
- 15kV barrier
- test socket - shorting
- plug & socket



Title.  
WIRING DIAGRAM FOR 15KV TEC RELAY  
IN 1.1/2P VEDETTE CASE.

First used on:  
Similar Articles:  
Supersedes: Rev1 Dated 8/1/76

3 RDW	14/10/08	MN750/3018
2 RDW	15/1/03	CAD REDRAW - NO MODS. MN112/2459
ISSUE	DATE	MOD.No.

**Reyrolle Protection  
Hebburn.**

Original Scale.

Drg.No.  
**410W1906**