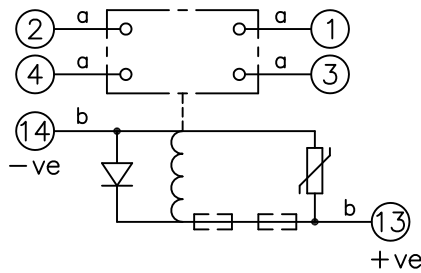


LOOKING ON FRONT OF RELAY



- NOTE:
- RESISTORS ARE NOT REQUIRED ON OTHER VOLTAGE VARIATIONS.
 - * THE AR141T2 125VDC & 240VDC VERSIONS MUST HAVE RESISTOR 2101C21471 FITTED INSTEAD OF THE ONE SPECIFIED ON CHART. SEE RELEVANT B.O.M.
 - HEAVY DUTY CONTACTS ARE FITTED WITH BLOWOUT MAGNETS AND ARE POLARITY CONSCIOUS, SEE TABLE BELOW FOR +VE TERMINAL.

KEY make contact break contact c/o contact ext. conn plug bridge - shorting metering point 5Kv barrier test socket - shorting plug & socket	125	* 2101C21102 ONLY.	NIL.	SEE NOTE 2 *	ASSEMBLY WIRES USED		
	240	* 2101C21102 +EXT. RES.	EXT. RES. ONLY	SEE NOTE 2 *	a	2107B10003 4 OFF	
	VDC	RES.(T1,T2,T3,T6).	RES.(T4).	REMARKS	b	2107D10164 2 OFF	
	CONTACT CONFIG.	OUTPUT CONTACT PAIR / TERMINAL No.					
		1-3	2-4	5-7	6-8	9-11	10-12
	2M	M	M	/	/	/	/
	1M 1B	M	B	/	/	/	/
	2B	B	B	/	/	/	/

NOT SUBJECT TO UPDATE
ONCE COPIED / PRINTED
OR DOWNLOADED

FRAME REFERENCE: E2FAQQ.
 FRAME TERMINAL BLOCK ASSY: -
 ASSEMBLY INSTRUCTIONS: -
 TYPICAL ASSEMBLY DRAWING 2995G10032.
 AT INDICATED POSITIONS FIT AS FOLLOWS:
 T - FIT TRIP ISOLATION CONTACT 2995B10053
 S - FIT STANDARD CONTACT 2995B10054
 SECURE CONTACTS USING FIXING SCREW 2109F99009.
 POSITIONS SHOWN BLANK ARE UNUSED

2	T	T	1
4	T	T	3
6	T	T	5
8	T	T	7
10			9
12			11
14	S	S	13
16			15
18			17
20			19
22			21
24			23
26			25
28			27

VIEW FROM NUMBERED
SIDE OF BLOCK

OUTER TERMINAL BLOCK ASSY: -
 ASSEMBLY INSTRUCTIONS: -
 TYPICAL ASSEMBLY DRAWING 2995G10029.
 AT INDICATED POSITIONS FIT AS FOLLOWS:
 S - FIT STANDARD CONTACT 2995B10051
 HC - FIT 'HEAVY CURRENT' KIT 2995G10030
 WHERE IS SHOWN FIT CT SHORTING
 KIT 2995G10031
 POSITIONS SHOWN BLANK ARE UNUSED.
 ALL POSITIONS FIT SCREW 2106F12506.

2	S	S	1
4	S	S	3
6	S	S	5
8	S	S	7
10			9
12			11
14	S	S	13
16			15
18			17
20			19
22			21
24			23
26			25
28			27

VIEW FROM INSIDE
FACE

Copyright © 2002 VATECH REYROLLE ACP Ltd. Hebburn

			Title. TERMINAL BLOCK & WIRING DIAGRAM FOR AR1-1T-D 2C RELAYS IN E2 CASE.		First used on:	
					Similar Articles:	
					Supersedes:	
2 RDW	03/03/10	MN112/3260 JB	VATECH REYROLLE AUTOMATION, CONTROL & PROTECTION		Original Scale. Drg.No. 2112W50128	
1	15/04/02					
ISSUE	DATE	MOD.No.				
DRAWN:	A.LAW.	CHECKED:	APPROVED:	R.D.WATSON	DATE:	17/07/02
			IE:		OPS:	