

**IF IN DOUBT ASK  
DO NOT SCALE**

**EU EXPORT CONTROLS**

**ECCN: N**

**AL: N**

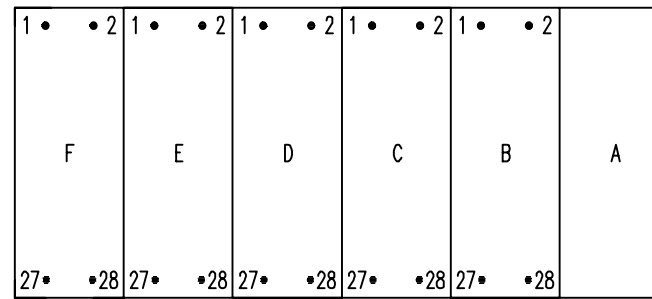
**This document is not Export Controlled unless sending to Critical Countries.**

Relay Earthing

Terminal B28 of the PSU should be earthed by a direct connection to the device case earth stud (GND).

The device case earth stud should be solidly earthed by a direct connection to the panel earth.

Terminal contacts internal to case assembly close when device is withdrawn from case.



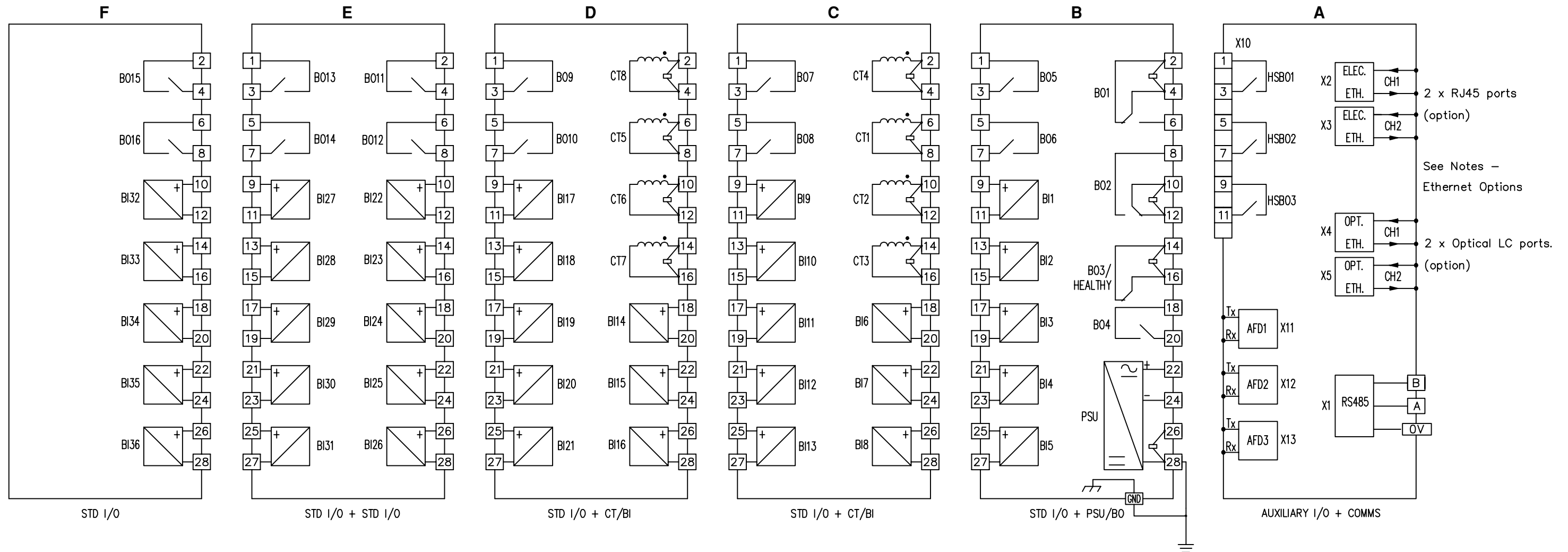
VIEWED FROM REAR

Warning – Eye Safety

Connectors X11–X13 are Laser class 1 (LED radiation only) products.

Notes – Ethernet Options

Device will be fitted with either 2 x electrical (RJ45) or 2 x optical (LC) ethernet ports.



| ABBREVIATIONS |                               |
|---------------|-------------------------------|
| AFD           | ARC FLASH DETECTOR            |
| BI            | BINARY INPUT                  |
| BO            | BINARY OUTPUT                 |
| COMMS         | COMMUNICATIONS                |
| CT            | CURRENT TRANSFORMER           |
| ELEC          | ELECTRICAL                    |
| ETH           | ETHERNET                      |
| GND           | GROUND (CASE EARTH STUD)      |
| HSBO          | HIGH SPEED BINARY OUTPUT      |
| OPT           | OPTICAL                       |
| PSU           | POWER SUPPLY UNIT (AUXILIARY) |
| STD I/O       | STANDARD INPUT/OUTPUT         |

**NOT SUBJECT TO UPDATE  
ONCE COPIED / PRINTED  
OR DOWNLOADED**

|       |          |              |
|-------|----------|--------------|
| 2 NC  | 21/04/21 | 3Z2000249 JS |
| 1     | 27/05/20 | CHANGE NOTED |
| ISSUE | DATE     |              |

|                      |   |                         |
|----------------------|---|-------------------------|
| Finish: —            | Title: REAR TERMINAL CONNECTIONS—7SR5[1,4]20—6ADx6—0AA0<br>8CT, 36BI, 16BO, 3AFD, 3HSBO | First used on: —        |
| Treatment: —         | <b>SIEMENS PLC</b>  | Similar Articles: —     |
| Drawn: J SPOWART     | Checked: K.H  | Supercedes: —           |
| Approved: N CAMPBELL | Date: 09/06/20  | Dwg No. 2518W50114      |
| Original Scale: NTS  | Copyright © 2020  | A3 SIEMENS PLC. Hebburn |