

Parameter Export

© SIEMENS AG 2002. All Rights Reserved.



PTD PA13
 Power Transmission and Distribution
 Power Automation
 Power Quality

- Confidential - Copying of this document and giving it to others and the use or communication of the contents thereof are forbidden without express authority. Offenders are liable to the payment of damages. All rights are reserved in the event of the grant of a patent or the registration of a utility model or design.

Manual

Export of SIMEAS R parameters via Oscop P

Verfasser	Abteilung	Telefon	Version	Datum
Mr. Unterweger	PTD PA 13	+49 911/433 7176	V1.03	01.07.2002
Dr. Sezi	PTD PA 13	+49 911 433 8291	V1.04	08.07.2002
Mr. Unterweger	PTD PA 13	+49 911/433 7176	V1.05	26.07.2002

Table of contents

1	Introduction	3
1.1	Important information	3
2	Export SIMEAS R parameters from OSCOP P	4
2.1	Proceeding at the customer's central OSCOP P installation	4

- Confidential - Copying of this document and giving it to others and the use or communication of the contents thereof are forbidden without express authority. Offenders are liable to the payment of damages. All rights are reserved in the event of the grant of a patent or the registration of a utility model or design.

1 Introduction

This manual describes how to export and save the SIMEAS R device parameters (*.srp file) via using the PC program OSCOP P.

If you want to order a new mass storage for SIMEAS R which is prepared with the existing parameters of the device, you need to send this *.srp file by email to our factory in Berlin. The goal of the operation is to minimize the user's efforts for an upgrade of the mass storage of SIMEAS R.

The mass storage shipped from our factory will be programmed with these parameters of SIMEAS R and with the most recent firmware. After inserting this prepared mass storage medium, SIMEAS R will be ready for operation without any additional requirements.

1.1 Important information

Together with the new parameterized storage medium you get automatically the instructions for the installation of the SIMEAS R mass storage medium. Please install the prepared mass storage medium immediately after you have received it from our factory.

For further information using the program OSCOP P see the OSCOP P manual or contact our hotline: Services@ptd.siemens.de
Tel.:+49 180 524 7000.

Further informations for SIMEAS R FW upgrade procedure are available at our internet download area: www.powerquality.de/pq_da/index_e.htm

- Confidential - Copying of this document and giving it to others and the use or communication of the contents thereof are forbidden without express authority. Users are liable to the payment of damages. All rights are reserved in the event of the grant of a patent or the registration of a utility model or design.

2 Export SIMEAS R parameters from OSCOP P

2.1 Proceeding at the customer's central OSCOP P installation

1. Start OSCOP P module "Parametrize device".
2. Select the parameter of the correct SIMEAS R device you want to export and confirm your selection by pressing the "OK" button.
3. Make sure that the current device parameters of SIMEAS R are the same with the parameters saved in the OSCOP P Database. To check this, please proceed as follows.
4. From the file menu select "Parameter" - "Load from device" to transfer the device parameters from SIMEAS R to OSCOP P.

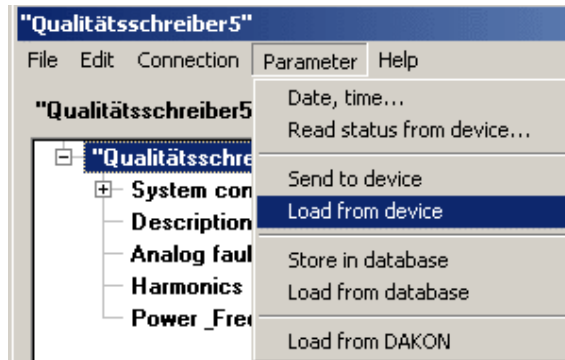


Figure 1: Load parameters from device

5. Select the menu "Parameter" – "Store in database" to save the SIMEAS R device parameters in the OSCOP P database.

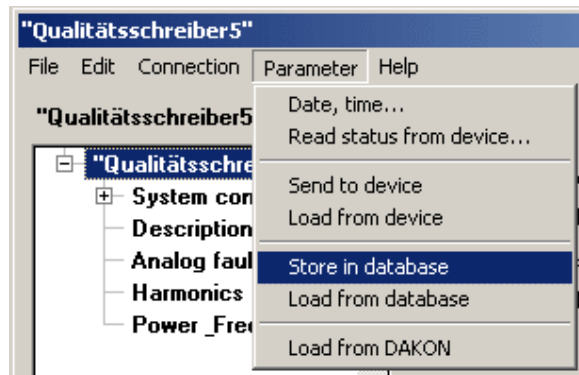


Figure 2: Store parameters in database

6. From the file menu select „File“ „Export...“.
7. Choose a recognizable device name not longer than 8 characters, e.g. "SIMEASR1.SRP":

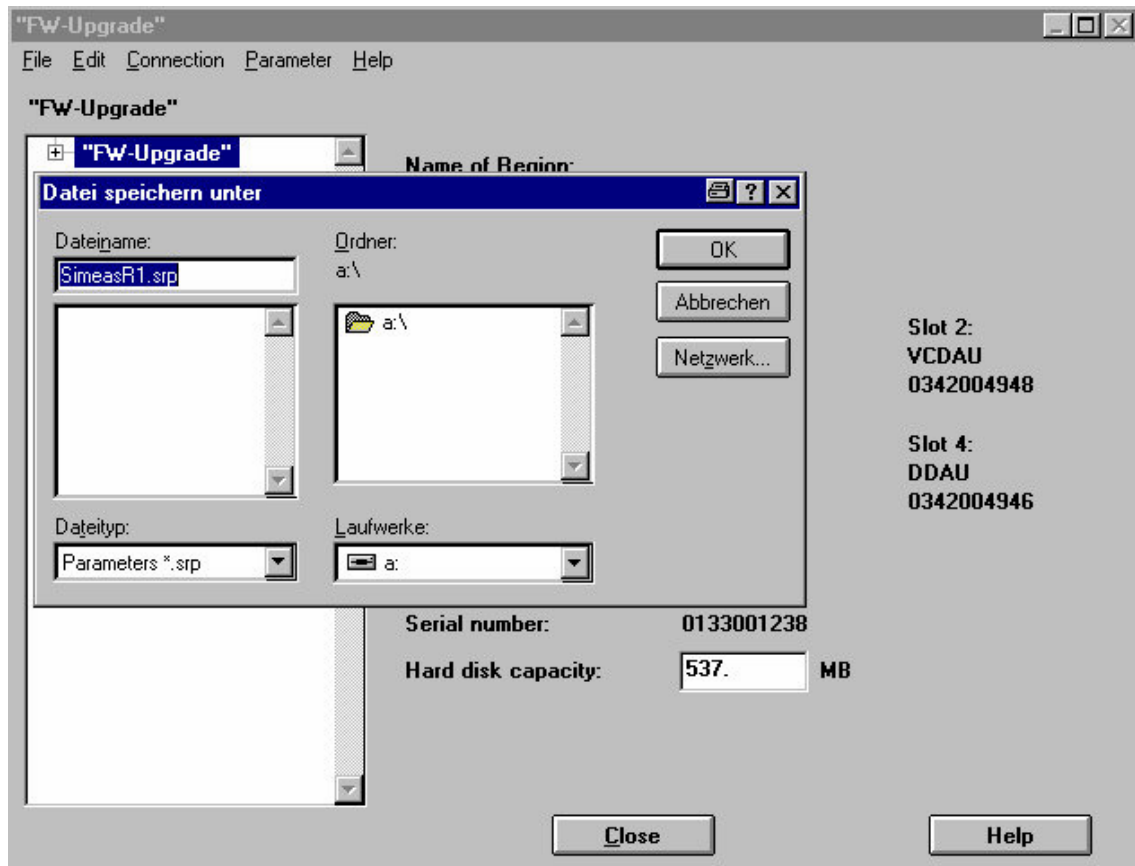


Figure 3: Export SIMEAS R parameters

8. Insert an empty floppy disk into the floppy disk drive of your PC and select the floppy disk for storage. Confirm with "OK". Now the parameters will be exported to the floppy disk. Another possibility is to save the parameters on the hard disk of your PC and send them later by EMAIL to us. (see point 10)

Note: If necessary export the parameters of other devices using the same procedure.

9. To be able to prepare the new mass storage medium with the device parameters it is important to us that you make a list with the assignment of the devices and the corresponding files including the device parameters. This list must include of the following information:

1. The **order number** of the new Flash storage media (given by the responsible Siemens contact person)
2. The name of the device defined under point 7 (filename of the exported device parameters) and the corresponding device number (factory number, see front cover of the SIMEAS R e.g. TDD-N9- 602234 or AA-K1-600100). This is very important in order to be able to associate the new mass storage media later with the device parameters to the correct devices (e.g. SIMEASR1.SRP belongs to factory number TDD-N9-602234, SIMEASR2.SRP belongs to factory number TDD-N9-602259 etc.).
3. Noting the **SIMEAS R device password**. Either the original standard password "kennwort" is used or any other assigned by you.

Note: Please make sure that you specify the right **SIMEAS R device password!** -> Don't mix up with the OSCOP P password!

4. Specific address of the customer, **Q-Number** you have received from us. This number is very important for the correct assignment and should also be stated in the template.
5. Use the pre-printed form "Device list SIMEAS R".



"Devicelist SIMEAS R
V1.01.doc"

10. Send the parameters (*.srp files) and the list of devices as well as the complete customer data (name, full address and - **very important** - the **Q-number**) and the **order number** assigned to this upgrade to Siemeasupgrade@ptd.siemens.de.

- Confidential - Copying of this document and giving it to others and the use or communication of the contents thereof are forbidden without express authority. Offenders are liable to the payment of damages. All rights are reserved in the event of the grant of a patent or the registration of a utility model or design.