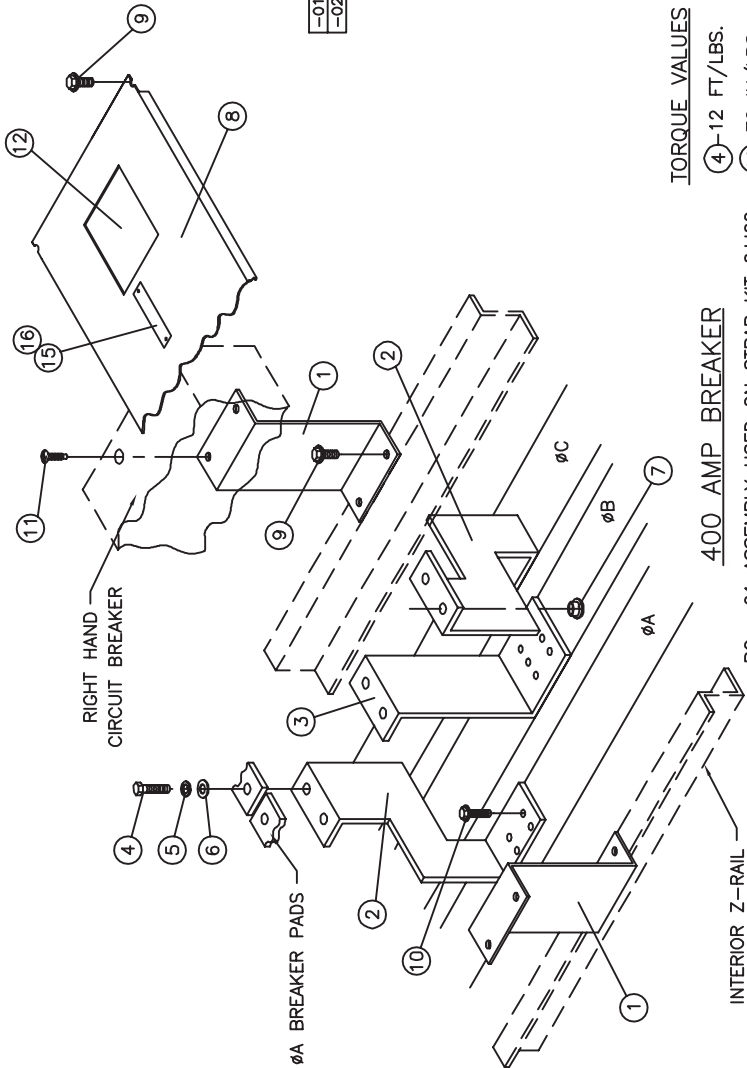


Dwg No. 12-5721  
 Title Block  
 11 Rev  
 1/4" = 1"



**TORQUE VALUES**  
 (4) - 12 FT/LBS.  
 (10) - 72 IN/LBS.

**400 AMP BREAKER**

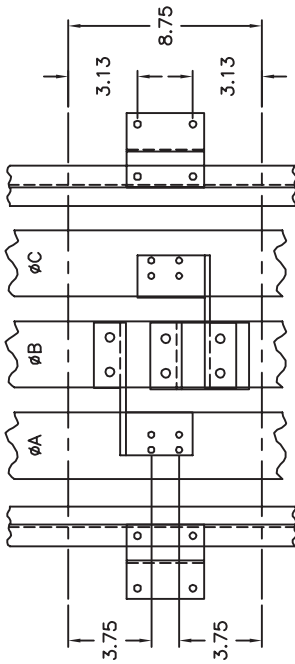
PC: -01 ASSEMBLY USED ON STRAP KIT 6JJ62  
 PC: -02 ASSEMBLY USED ON STRAP KIT SJ2D

FOR ITE BREAKER TYPES:  
 JD2, JJ6, JL6, HJ6, JXD2  
 JXD2, JXD6, JD6, HJD6, HHJD6

**⚠ DANGER**

Hazardous voltage.  
 Will cause death or serious injury.  
 Keep out.  
 Qualified personnel only.  
 Disconnect and lock off all power before working on this equipment.

-02	-01	ITEM	PC. NO.	DESCRIPTION
2	2	1	11-6398-01	MOUNTING BRACKET
1	2	2	16-6974-01	øAC BRANCH BUS
1	1	3	16-6949-02	øB BRANCH BUS
6	6	4	11-1566-07	5/16" X 1-1/4" HHMS
6	6	5	11-1618-04	5/16" LOCK WASHER
6	6	6	11-1615-06	5/16" FLAT WASHER
6	6	7	11-1620-04	5/16-18 INSERT
1	1	8	12-6139-01	FRONT PLATE
6	6	9	11-1553-02	1/4-20 X 3/8" SHWHISW
2	2	10	11-B-2022-05	STRAP-BUS HARDWARE KIT
4	4	11	11-1542-14	1/4-20 X 2-3/4" SRHMS
1	1	12	12-5531-11	FILLER PLATE ASSEMBLY
1	-	13	31-1223-01	INSTRUCTION SHEET
1	1	14	15-A-1027-01	CARTON LABEL
2	2	15	11-7505-01	CIRCUIT I.D. CARD
2	2	16	11-7506-01	CARD HOLDER
4	-	17	11-1546-03	1/4-20 X 5/8" HHMS
4	-	18	11-1618-03	1/4" LOCK WASHER
4	-	19	11-1615-04	1/4" FLAT WASHER
-	-	20	11-1580-02	3/8-16 X 1" RISNB
-	-	21	11-1622-01	3/8-16 BELLEVILLE WASHER NUT
1	1	22	48001057	CARTON
-	1	23	11-5570-02	SERIES 5 CONVERSION KIT
-	1	24	31-1169-01	INSTRUCTION SHEET
-	1	25		
-	1	26	12-B-2105-04	NEUTRAL LUG ASSEMBLY
1	-	27	12-B-2105-06	NEUTRAL LUG ASSEMBLY



Date	C.N.	Rev	Date	By	Scale	Sheet
4-12-84	0864	0	4-12-84	KJM	NONE	1 of 1
7-15-88	1945	1		SH		
2-16-89	1A-066	2		PM		
11-30-90	1A-280	3				
1-31-91	1A-280B	4				
7-22-91	1A-939	5				
2-11-92	1B-190	6				
11-11-92	1B-359	7				
5-8-95	1B-908	8				
04-12-04	1C-831A	9				
7-31-06	1C-831B	10				
		11				

Unless otherwise specified dimensions are in inches  
 Tolerances are non-cumulative and are as follows unless specified otherwise.  
 .XX ± .030  
 .XXX ± .015  
 Angular ± 2°  
 Do not scale drawing  
 Dwn KJM Date 4-12-84  
 Chk SH Date 11-30-90  
 Apvd PM Date 11-30-90

Confidential - Property of  
**Siemens Industry, Inc.**  
 Building Technologies Division

JD FRAME TWIN MOUNTING  
 SERIES 6 BRANCH

Dwg No. 12-5721  
 Rev 11

FOR USE WITH JXD2, JXD6, JD6 AND HJD6 FRAME BREAKERS MOUNTED IN SPP/FPP/S5/F2/P5 PANELBOARDS (DEEP BOX).