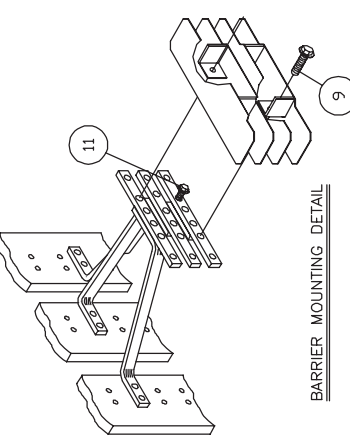
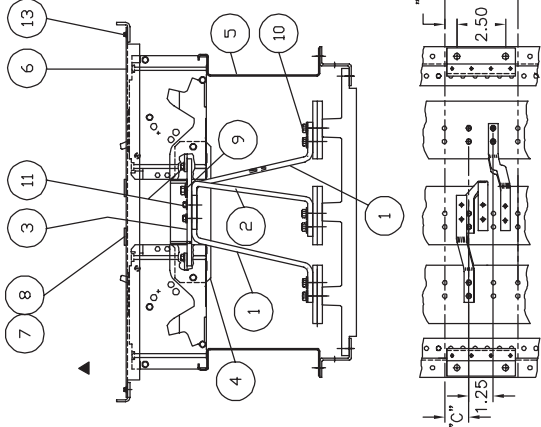


Third Angle Projection  
  
 Dwg. No. 11-5079-00  
 Scale 1/10  
 Sht. 1 of 1



**⚠ DANGER**  
 Hazardous voltage. Will cause death or serious injury.  
 Keep out. Qualified personnel only. Disconnect and lock off all power before working on this equipment.

LOCATION DIMENSIONS

BOM. NO.	"A"	"B"	"C"
-01	3.75	0.63	1.25
-02	6.25	1.88	2.50
-04			

TORQUE VALUES

10	50 in.-lbs. AL. 72 in.-lbs. CU.
11	30 in.-lbs. AL. 50 in.-lbs. CU.

F-2-4-&-6 FRAME BRANCH BREAKER  
 15-125 AMPERE  
 DOUBLE MOUNTING

FOR I.T.E. TYPE BREAKERS:  
 E2, E4, E6, HE4, HE6  
 E2-A, E4-A, E6-A, HE4-A, HE6-A  
 E2, ED4, ED6, HED4, HED6

10	1C-381A	8-30-00
9	1C-267A	1-15-00
8	1B-908	4-20-95
7	8A093	7-14-88
6	CN:622	
5	CN:557	
4	CN:554	
3	CN:440	
2	CN:416	

Confidential - Property of  
**Siemens Industry, Inc.**  
 Building Technologies Division

ED2, ED4, & ED6 MOUNTING  
 SERIES 6 BRANCH BUS

Date	Date	Dwg. No.	Rev.
11-11-00	11-11-00	11-5079-00	10
14-19-82			

Unless otherwise specified dimensions are in inches and are as follows unless specified otherwise.

XX ±.030  
 .XXX ±.015  
 Angular ± 2

Do not scale drawing

Dwn DB Date 1-11-00  
 Chk RHR Date 1-11-00  
 Apvd RHR Date 1-4-00

Scale NONE Sheet 1 of 1

ITEM	DESCRIPTION	PC. NO.	QTY.
1	E2-4-6 PHASE AC BRANCH BUS	11-7140-01	2
2	E2-4-6 PHASE B BRANCH BUS	11-7141-01	1
3	E2-4-6 LINE CONNECTOR	11-7138-01	3
4	INTERPHASE BARRIER	15-7505-01	2
5	E2-4-6 MOUNTING BRACKET	15-B-3014-02	2
6	3.750 E2-4-6 COVER PLATE	12-6024-01	1
7	CIRCUIT I. D. CARD	11-7505-01	2
8	CARD HOLDER	11-7506-01	2
9	1/4-20 X 3/8 SHWHSW	11-1553-02	2
▲ 10	STRAP-BUS HARDWARE KIT	11-B-2022-05	1
11	10-24 X 5/8 ISHOWHSW	11-1576-07	12
12			
13	1/4-20 X 5/8 SHWHSW	11-1553-06	8
14	NEUTRAL LUG ASSEMBLY	12-B-2105-01	1
15			
16	BLANK FILLER	12-5531-09	2
17			
18			
19			
20			
21			
22			
23			
24			
25			
26			
27	INSTRUCTION SHEET	31-1215-01	1
29	CARTON LABEL	15-A-1027-01	1
30	CARTON	48001056	1
31			
32			
33			
34	ED FRAME BRANCH BREAKER		
35	15-125 AMPERE		
36			
37	FOR BREAKER TYPES: ▲ E2, E4, E6, HE4, HE6 E2-A, E4-A, E6-A, HE4-A, HE6-A ED2, ED4, ED6, HED4, HED6		
38			
39			
40			
41			
42			
43			
44	MERCHANDISE KIT NO. SE6D		
Confidential - Property of <b>Siemens Industry, Inc.</b> Norcross, GA Building Technologies Division		ED2-4-6 MOUNTING, S5 COPPER BRANCH BUS	11-5079-06 Dwg. No.
		Sht. 1	Of 1
			Rev. 7

FOR USE WITH ED2, ED4, ED6, HED4 AND HED6 FRAME BREAKERS  
 MOUNTED IN SPP/FPP/S5/F2/P5 PANELBOARDS (DEEP BOX).