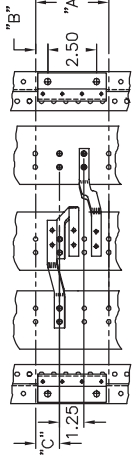


BARRIER MOUNTING DETAIL

⚠ DANGER
 Hazardous voltage. Will cause death or serious injury.
 Keep out. Qualified personnel only. Disconnect and lock off all power before working on this equipment.



LOCATION DIMENSIONS

BOM. NO.	"A"	"B"	"C"
-01	3.75	0.63	1.25
-03	6.25	1.88	2.50
-04			

E-2-4- & 6 FRAME BRANCH BREAKER DOUBLE MOUNTING
 FOR I-T-E TYPE ED2-4-6 BREAKERS USED ON KIT SE6

TORQUE VALUES

- 10 50 in.-lbs. AL.
72 in.-lbs. CU.
- 11 30 in.-lbs. AL.
50 in.-lbs. CU.

4	1C-381A	8-30-00
3	1C-267A	1-4-00
2	1A-280	11-30-90

Unless otherwise specified dimensions are in inches Tolerances are non-cumulative and are as follows unless specified otherwise. .XX ±.030 .XXX ±.015 Angular ± 2° Do not scale drawing		Date 1-11-00 Date 1-11-00 Date 1-4-00	
Dwn	DB	Date	1-11-00
Chk	RHR	Date	1-11-00
Apvd	RHR	Date	1-4-00
Scale NONE		Sheet 1 of 1	
Dwg No. 15-B-2011-00		Rev. 4	
Confidential - Property of Siemens Industry, Inc. Norcross, GA			
E-2, E-4, & E-6 BRANCH BREAKER S4, DOUBLE MOUNT SPP (SHALLOW)			

ITEM	DESCRIPTION	PC. ND.	QTY.
1	ED2-4-6 PH. A&C BRANCH BUS	15-B-4005-02	2
2	ED2-4-6 PH. B BRANCH BUS	15-B-4006-02	1
3	ED2-4-6 LINE CONNECTOR	11-7138-01	3
4	INTERPHASE BARRIER	15-7505-01	2
5	E2-4-6 MOUNTING BRACKET	15-B-3014-01	2
6	3.75" E2-4-6 COVER PLATE	12-6024-01	1
7	CIRCUIT ID CARD	11-7505-01	2
8	CARD HOLDER	11-7506-01	2
9	1/4-20 X 3/8 SHWHSW	11-1553-02	8
10	STRAP-BUS HARDWARE KIT	11-B-2022-05	1
11	10-24 X 5/8 ISHOWHSW	11-1576-07	12
12			
13			
14	NEUTRAL LUG ASSEMBLY	12-B-2105-01	1
15			
16	BLANK FILLER	12-5531-09	2
17			
18			
19			
20			
21			
22			
23			
24			
25			
26			
27			
28	INSTRUCTION SHEET	31-1199-01	1
29	CARTON LABEL	15-A-1027-01	1
30	CARTON	48001057	1
31			
32			
33			
34			
35			

FOR I-T-E TYPE BREAKERS: ED2, ED4, ED6, HED2, ED4, HED6

Confidential - property of Siemens Industry, Inc. Norcross, GA	ED2-4-6 MOUNTING S4, COPPER BRANCH BUS, CAT. ND. SE6	15-B-2011-05 Dwg No.	Sht. 1 of 1	Rev. 5
-----------------------------------------------------------------------------	---------------------------------------------------------	-------------------------	-------------	--------

FOR USE WITH ED2, ED4, ED6, HED4 & HED6 FRAME BREAKERS MOUNTED IN SPP/FPP/S4/F1/P4 PANELBOARDS (SHALLOW BOX).