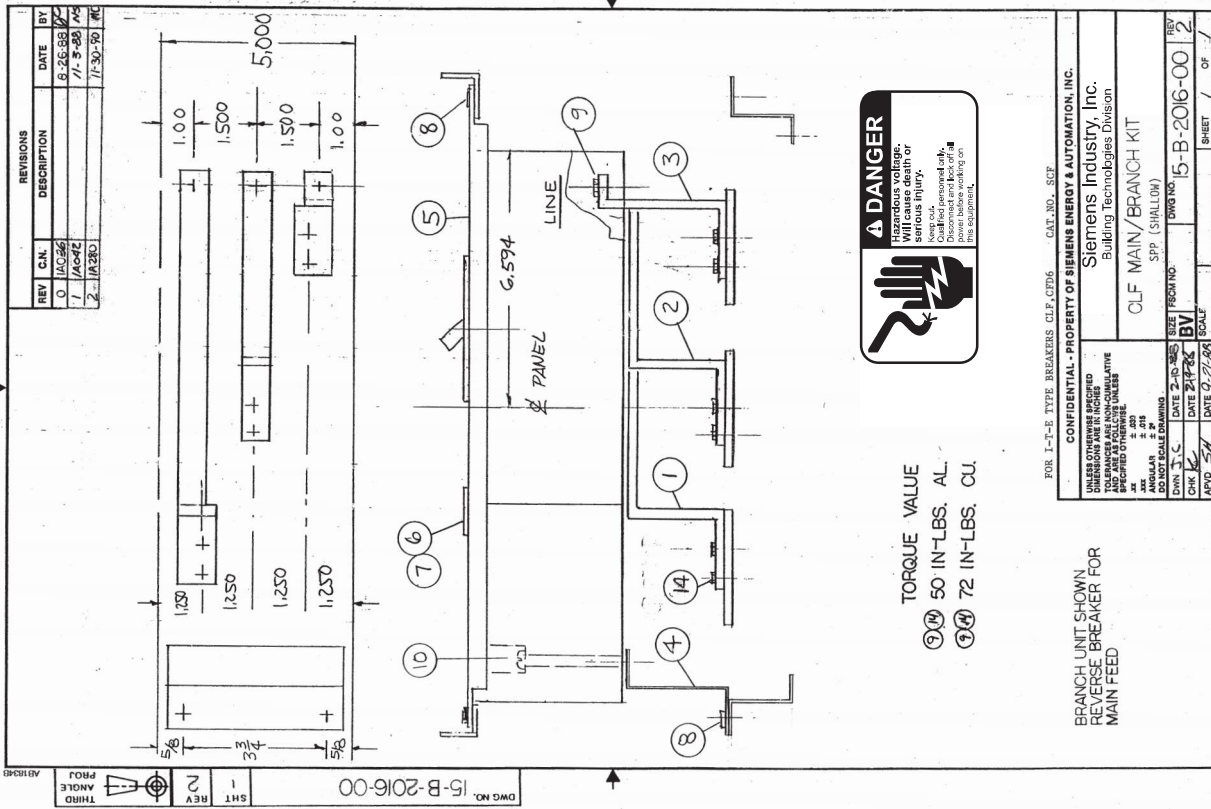


APVD	PM	ITEM	DESCRIPTION	PC. NO.	QTY.
11-30-90		1	PHASE A BRANCH BUS	12-B-4011-01	1
		2	PHASE B BRANCH BUS	12-B-4012-01	1
		3	PHASE C BRANCH BUS	12-B-4013-01	1
		4	MOUNTING BRACKET	15-B-3020-01	1
		5	5" MAIN COVER PLATE	12-6029-01	1
		6	CIRCUIT ID CARD	11-7505-01	1
		7	CARD HOLDER	11-7506-01	1
		8	1/4-20 X 3/8 SHHWS	11-1553-02	4
		9	1/4-20 X 1 SHHWS	11-1553-09	3
		10	1/4-20 X 4 SRHMS	11-1542-19	2
		11			
		12	BLANK FILLER	12-5531-10	1
		13	NEUTRAL LUG ASSEMBLY	12-B-2105-05	1
		14	STRAP-BUS HARDWARE KIT	11-B-2022-05	1
		15			
		16			
		17			
		18			
		19			
		20			
		21			
		22			
		23			
		24			
		25			
		26			
		27			
		28	INSRTUCTION SHEET	31-1204-01	1
		29	CARTON LABEL	15-A-1027-01	1
		30	CARTON	48001056	1
		31			
		32			
		33			
		34			
		35			

Revisions: 1-A-280 11-30-90	1:1A-R32 03-13-91	5: 1C-831B 04-12-04
2:1B-148 10-06-90		
3:1B-908 5-7-95		
Chk SH	11-30-90	
By MC		
	11-20-90	

FOR I-T-E TYPE BREAKERS: CLF, CFD6 70-225 AMPERES
FOR (SHALLOW) PANELBOARDS

Confidential - property of Siemens Industry, Inc. Building Technologies Division	225 AMP CLF BREAKER S4, COPPER BRANCH BUS, CAT. NO. SCF	15-B-2016-03	5
Title		Sht. 1	Of 1



FOR USE WITH CFD6 FRAME BREAKERS MOUNTED IN SPP/FPP/S4/F1/P4 PANELBOARDS (SHALLOW BOX).