

CATALOG NUMBER

ECINSGB5

electricCenter
ACCESSORIES

Insulated Ground Bar
5 Positions, #14-4 AWG, 100A MAX

Same As:
■ INSGB5



GROUND BAR INSTALLATION INSTRUCTIONS



⚠ DANGER

Hazardous Voltage.
Will cause death, serious injury
or substantial property damage.

Turn off power supplying this
equipment before working inside.



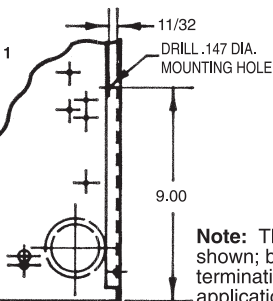
SAFETY INSTRUCTIONS

Note: This instruction outlines the recommended installation procedure.

See wiring diagram on device for wire sizes and torques.

1. Turn off and lock out the power supplying the load center before working inside.
2. With insulation in place, locate neutral assembly on top of mounting hole. (If mounting hole for installing this accessory is not in box, see Fig. 1 for drilling instructions.)
3. Install self threading screw, tighten to 15 to 20 lb.-ins.

Fig. 1



Note: This accessory may be located other than shown; but it can not interfere with any termination or KO required for the load center application.

Bottom Right Hand Corner of Box

© 2010 Copyright Siemens Industry, Inc.

4810465 Rev.C

Siemens Industry, Inc.

Norcross, Georgia U.S.A.

Assembled in Mexico