

## Instructions

52-HMA2

July, 2000  
Supersedes Issue of  
December, 1986

Oil Tight Push Buttons

Maintained Contact

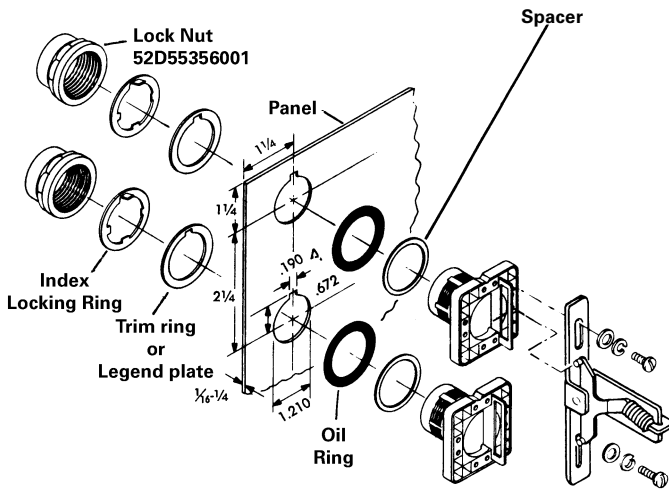
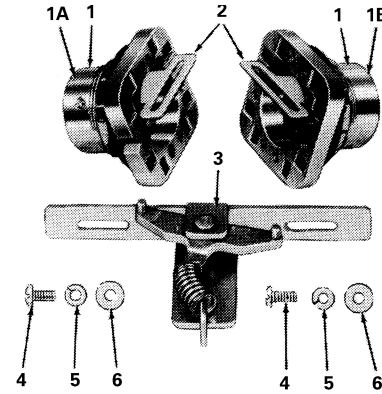
When installed as indicated, these operators are suitable  
for use in Type 1, 3 3R, 4, 12 or 13 enclosures.

Class 52 52MA2

### Contents Of Kit 52MA2A1A2

Item	Description	Qty.	Part No.
1	Push Button Operator	2	52PA8
1A	Black (ON) Flush Cap	1	52RA1A1
1B	Red (OFF) Flush Cap	1	52RA1B2
2	Pusher Disk	2	D20295001
3	Snap Action Toggle Assembly	1	D52763002
4	Binding Head Screw, 6-32x <sup>5</sup> / <sub>16</sub>	2	S00127014
5	Split Lock Washer	2	S00122002
6	Flat Washer	2	S00130002

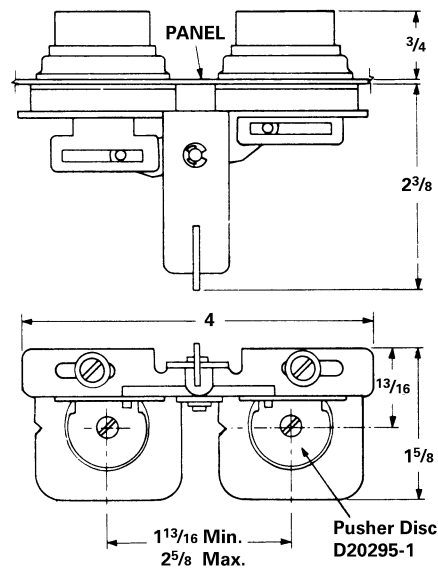
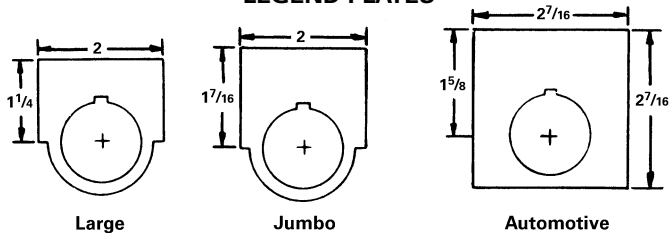
Kit 52MA2 includes all items except 1A and 1B.  
Legend plates must be ordered separately.



Automotive legend requires 2 1/2" spacing.  
Some accessories also require additional spacing.

Fig. 1

### LEGEND PLATES



1/8 Dia. Locating Pin

Fig. 2

necting guide slots rotate freely (2 Fig. 2), and can be positioned by hand.

### INSTALLATION

1. Check gaskets to see that they are properly seated on their respective push buttons.
2. Mount both push buttons from back of panel as shown above. Tighten lock nuts to 15 ft.-lbs.
3. Observe orientation of connecting guide slots on push buttons. They must be oriented as shown in Fig. 1. The con-

4. Engage pins on snap action toggle assembly (3) with guide slots (2) on push buttons. It will be necessary to depress push button to correspond with snap action toggle assembly.
5. Secure snap action toggle assembly (3) to push buttons with the binding head screws (4), split lock washers (5) and flat washers (6).
6. Check for proper operation of completed push button assembly. When one push button is depressed the second should move forward, one should stay depressed until the other one is depressed. There should be no binding when operating the push buttons.

(For Engineering Reference Only - Rev. E)