

Terminal Blocks

8WA1 Terminals with Screw Connection

Diode terminals and isolating terminals

Selection and ordering data

With insulating body of molded thermoplastic

Terminal size 2.5 · Assembly width 6 mm

Diode terminals · With screw connections on both sides with test facility for test plugs of 2.3 mm dia.

Dimensions ⁷⁾	Rated insulation voltage	Rated uninterrupted current	Description	Order No.	Price
	250 V $U_{RRM}^{1)}$	1 A	Diode terminal	8WA1 011-1EF20	
	250 V $U_{RRM}^{2)}$	0.25	Diode terminal	8WA1 011-1EF28	
	$U_Z = 2.4 V^{3)}$	0.25 ⁴⁾	Zener diode terminal	8WA1 011-1EF24	

Through-type terminals with sectionalizing feature · With 2 holes for test plugs of 2.3 mm dia.

Dimensions ⁷⁾	Rated uninterrupted current	Rated insulation voltage	Description	Order No.	Price
	10 A	AC 380 V, DC 450 V (solder tags bent alternately up and down)	Isolating terminal with screw connection on both sides with 1 screw and 1 solder connection	8WA1 501 8WA1 511	
	open insulating gap AC 380 V, DC 450 V		Through-type terminals with sectionalizing feature are used for convenient current path isolation without disconnecting the conductors. At the sockets of the terminal screws, for example, it is possible to measure the loop impedance or to connect an ammeter into the circuit. The terminals can be connected in parallel by means of connecting combs. This means that the connectable conductor size is reduced by one step.		

Accessories

	Rated uninterrupted current	Description	Fig. No.	Order No.	Price	
	10 A	Barrier width 1 mm	①	8WA1 820		
		Jumper plug	③	8WA1 873		
	10 A	Connection comb⁵⁾	2-pole 3-pole 4-pole	②	8WA1 822-7VF12 8WA1 822-7VF13 8WA1 822-7VF14	
		Test plugs (1 pack = 10 units)	white	④	8WA1 867	1 packg.
		red		8WA1 868	1 packg.	
	10 A	blue		8WA1 870	1 packg.	
		Reduction plug	⑤	8WA1 871		

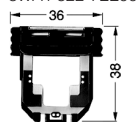
Terminal for components

Terminal size 1.5 · Assembly width 10 mm

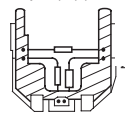
Terminal for components · With screw connections on both sides, for 2 conductors each · Plug with PCB for components

Dimensions ⁷⁾	Design	Limit values Current / Power loss	Description	Order No.	Price
	Space for components	6.3 A 500 V ⁶⁾	Terminal for components (enclosure only) For user to fit own components	8WA1 011-1EE00	
		6.3 A/0.65 W	Plug with PCB for components and labelling plate (20 mm × 9 mm)	8WA1 822-7EE00	

8WA1 822-7EE00



8WA1 822-7EE00 fully equipped, example



Labelling accessories see page 15/40 - 43

- 1) Peak reverse voltage 1000 V.
- 2) Peak reverse voltage 4000 V.
- 3) Break-through voltage $\pm 5\%$.
- 4) Let-through current.
- 5) When used the conductor cross-section will be reduced by one terminal size.
- 6) To next terminal; internally determined by customer's components.
- 7) 25.4 mm = 1.00 inch.