

# Terminal Blocks

## 8WA1 Terminals with Screw Connection

### Insta or three-tier terminals

#### Overview

The Insta or three-tier terminals incorporate up to three different terminal functions in one insulating body of 6 mm width. The width of three Insta terminals amounts to the standard spacing in distribution boards of 18 mm. The terminal can only be removed from the mounting rail by means of a tool.

All connection points for incoming and outgoing wires have a groove for an 8WA8 8... labelling plate. The following connections are pre-marked: protective conductor green/yellow and neutral conductor blue.

The N busbar has the same position on Insta terminals and N isolating terminals. Therefore, for example, a 16 mm<sup>2</sup> N isolating terminal can be used as the incoming terminal to the N busbar.

In the case of the 8WA1 011-3JF16, -3JF17 and -3JF18 with a mounting depth of 42.5 mm, the N busbar can be bypassed.

#### Grd, L, NT Insta terminal

The 8WA1 011-3JF20 terminal is the basic version for AC circuits. It comprises:

- Grd-conductor connection
- Through-type connection for one phase conductor
- Neutral conductor connection, which can be isolated from the 6 mm × 6 mm N busbar.

#### Grd, L, N Insta terminal

If no N isolation is required, the 8WA1 011-3JF17 terminal is used:

- Grd-conductor connection
- Through-type connection for one phase conductor
- Through-type connection for the neutral conductor.

#### Grd, L, L Insta terminal

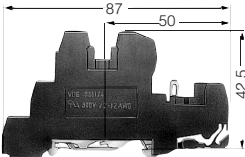
The design of the 8WA1 011-3JF16 terminal corresponds to the aforementioned design. Instead of the through-type connection for the neutral conductor a through-type connection for a second phase conductor has been provided.

#### L, L Insta terminal

The 8WA1 011-3JF18 terminal includes two through-type connections for two phase conductors. It is generally used for three-phase AC outgoing circuits.




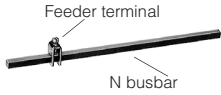
#### Selection and ordering data

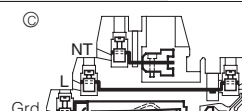
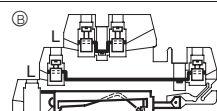
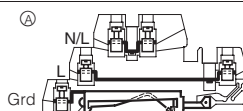
With insulating body of molded thermoplastic · With screw connections on both sides

Dimensions <sup>2)</sup>	IEC ratings uninterrupted current	AWG ratings current / voltage	Description	Design	Width	Fig. No.	Order No.	Price
8WA1 011-3JF16 to -3JF18, -3JF20	IEC ratings insulation voltage							
					mm <sup>2</sup> )			
	24 A 400 V between phase conductors;	20 A 300 V	<b>Insta terminal</b>	Grd, L, L Grd, L, N L, L Grd, L, NT		Ⓐ Ⓐ Ⓑ Ⓒ	<b>8WA1 011-3JF16</b> <b>8WA1 011-3JF17</b> <b>8WA1 011-3JF18</b> <b>8WA1 011-3JF20</b>	
Between link rails with small partitions: Rated insulation voltage a = 400 V b = 160 V, with barrier 400 V.	250 V between phase and ground conductors and for N insulating gap		<b>Barrier</b> , up to 400 V <b>Small partition</b> , up to 160 V		1.5		<b>8WA1 822-7TH00</b> <b>8WA1 825</b>	

Terminal size 2.5 mm<sup>2</sup> · Mounting width 6 mm · With screw connections on both sides AWG 22-12

#### Accessories

8WA2 867/868/870	24 A	<b>Link rail</b> for	2 terminals 3 terminals 4 terminals 10 terminals				<b>8WA1 822-7VF02</b> <b>8WA1 822-7VF03</b> <b>8WA1 822-7VF04</b> <b>8WA1 822-7VF10</b>	
		<b>Cover</b> 1)	with warning arrow white, for inscription transparent white, for inscription	6.5 6.5			<b>8WA1 811</b> <b>8WA1 862</b> <b>8WA1 822-7AX01</b> <b>8WA1 822-7AX03</b>	
8WA1 808	125 A	<b>N busbar</b> 6 mm × 6 mm	1104 mm long 2000 mm long				<b>8GF9 324-2</b> <b>8WC5 020</b>	
	32 A 76 A	<b>Feeder terminal for N busbar</b> 6 × 6 mm and	connection up to .4 mm <sup>2</sup> 25 mm <sup>2</sup>				<b>8WA2 867</b> <b>8WA2 868</b>	
	125 A	<b>10 × 3 mm</b> , bare	35 mm <sup>2</sup>				<b>8WA2 870</b>	
8WA1 857		<b>End retainer</b>		10			<b>8WA1 808</b> <b>8WA1 857</b>	
		<b>Insulated carrier</b>						1 packg.
		<b>Identification label</b> for end retainer (blank label) (1 packg. = 100 units)					<b>3TX4 210-0H</b>	
8GF9 324-2/8WC5 020		<b>Blank labels</b> for terminal designation (1 packg. = 100 units)					<b>8WA8 848-2AY</b>	1 packg.
								



Labelling accessories  
see page 15/40 - 43

- 1) Up to 3 terminals in parallel.
- 2) 25.4 mm = 1.00 inch