

Item: CAT. NO'S MBR9301 & MBR9302  
 PD & RD CONNECT-ALL MOUNTING BLOCK ASSEMBLY

For use with: I-T-E PD and RD Frame Types PD6, HPD6, PXD6, HPXD6, CPD6, RD6, HRD6, RXD6, HRXD6 and CRD6 Circuit Breakers.  
 PDX06 & RXD06 Molded Case Switches.  
 SPD6, SHPD6 & SCPD6 Electronic Circuit Breakers.

Page 1 of 2  
 P.C.No. 73532 Rev.

Siemens Energy & Automation, Inc.  
 Bellefonte, Ohio 43311 U.S.A.

## Installation Instructions

**⚠ DANGER**

**Excessive voltage will cause severe injury or death.**

Turn off and lock out all power supplying this device before removing cover (a) or device and while cover (a) are removed.

Replace the covers and shields before power supplying this device is turned on.

## SAFETY INSTRUCTIONS

**NOTE:** This instruction outlines the recommended installation procedure.

## MOUNTING OF CONNECT-ALL MOUNTING BLOCK ASSEMBLY

Catalog numbers: MBR9301 OR MBR9302

1. Provide suitable mounting supports (Item A) and drill holes per figure 1. (Recommended use of 1-3/8 x 7/8 x 3/16 steel angle)
2. Provide cutout for breaker escutcheon in front plate (Item B, Fig.1).

**NOTE:** Refer to figure 2 for catalog MBR9301. Figure 3 for catalog MBR9302. Remove four 3/8 x 1-1/2" hex head bolts, nuts and washers (Item C, Fig. 2 & 3) and re-use them to mount pan-and-block assembly to support angles. Tighten mounting bolts and nuts securely.

## MOUNTING SUPPORTS AND FRONT PLATE FOR DRILLING

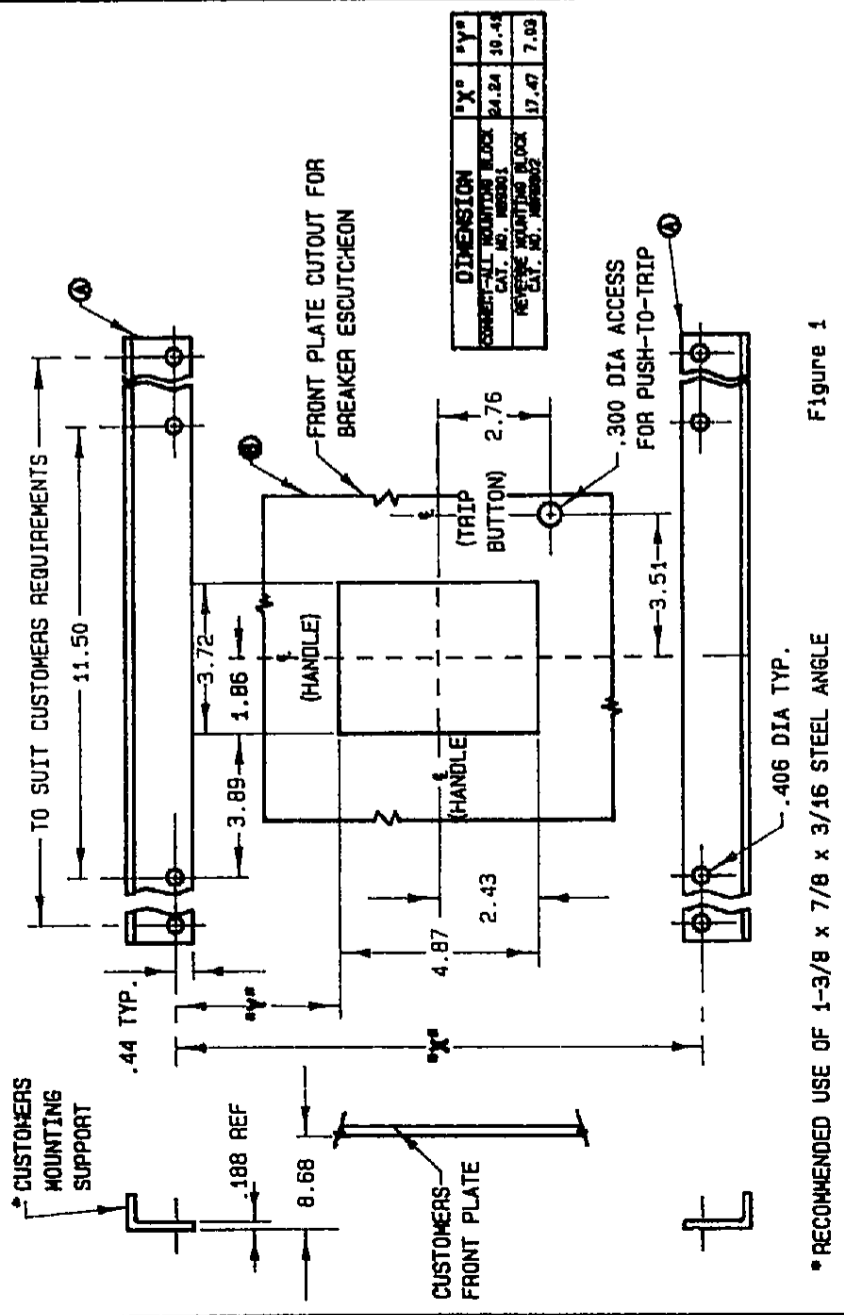


Figure 1

\* RECOMMENDED USE OF 1-3/8 x 7/8 x 3/16 STEEL ANGLE

Page 2 of 2  
 P.C. No. 73632 Rev.  
 © Siemens Energy & Automation, Inc.

## Installation Instructions

### MOUNTING OF CONNECT-ALL (MBR9301)

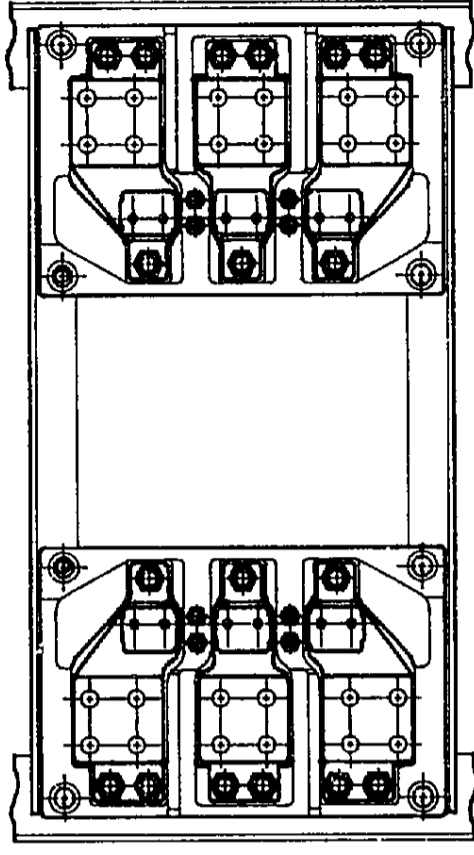


Figure 2

### MOUNTING OF CONNECT-ALL (MBR9302)

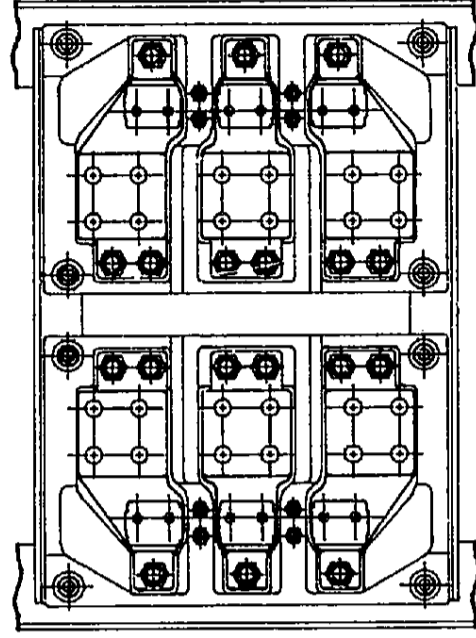


Figure 3

**⚠ DANGER**

**Excessive voltage will cause severe injury or death.**

Turn off and lock out all power supplying this device before removing cover (a) or device and while cover (a) are removed.

Replace the covers and shields before power supplying this device is turned on.