

SIEMENS

Siemens Energy & Automation, Inc.
I-T-E Circuit Protection Division
Bellefontaine, Ohio 43311 U.S.A.

© Siemens Energy & Automation, Inc. 1987

Item: TA2J630
Wire Grip Connector
For Use With: I-T-E Circuit
Breakers

Page: 1 of 1

Pc. No. 66019 Rev. 2P

Installation Instructions



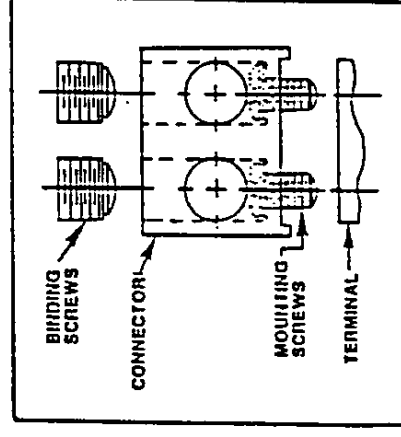
⚠ DANGER

HAZARDOUS VOLTAGE
Will cause severe injury or death.
Turn power off supplying device
before installing.

⚠ SAFETY INSTRUCTIONS

This kit contains a solderless connector and associated hardware for making one (1) line or load connection on JFP, HJFP, LFP, HLFP.

1. Turn power off supplying device before installing kit.
2. Mount connector to breaker terminal with mounting screws. Mounting screws must be torqued to 132 in.-lbs. to securely attach connector.
NOTE: Trip unit must be installed in breaker prior to mounting load-end connector.
3. Install conductor cable and tighten binding screws securely to prevent overheating of conductor and connector. For 4 - 1/0 wire, torque to 150 in.-lbs. For 2/0 - 3/0 wire, torque to 300 in.-lbs.



CABLE RANGE:
{ 1 or 2 } 4 - 1/0 CU or AL
{ 1 or 2 } 2/0 - 3/0 CU or AL