

Catalog Number: T482411CT344MR

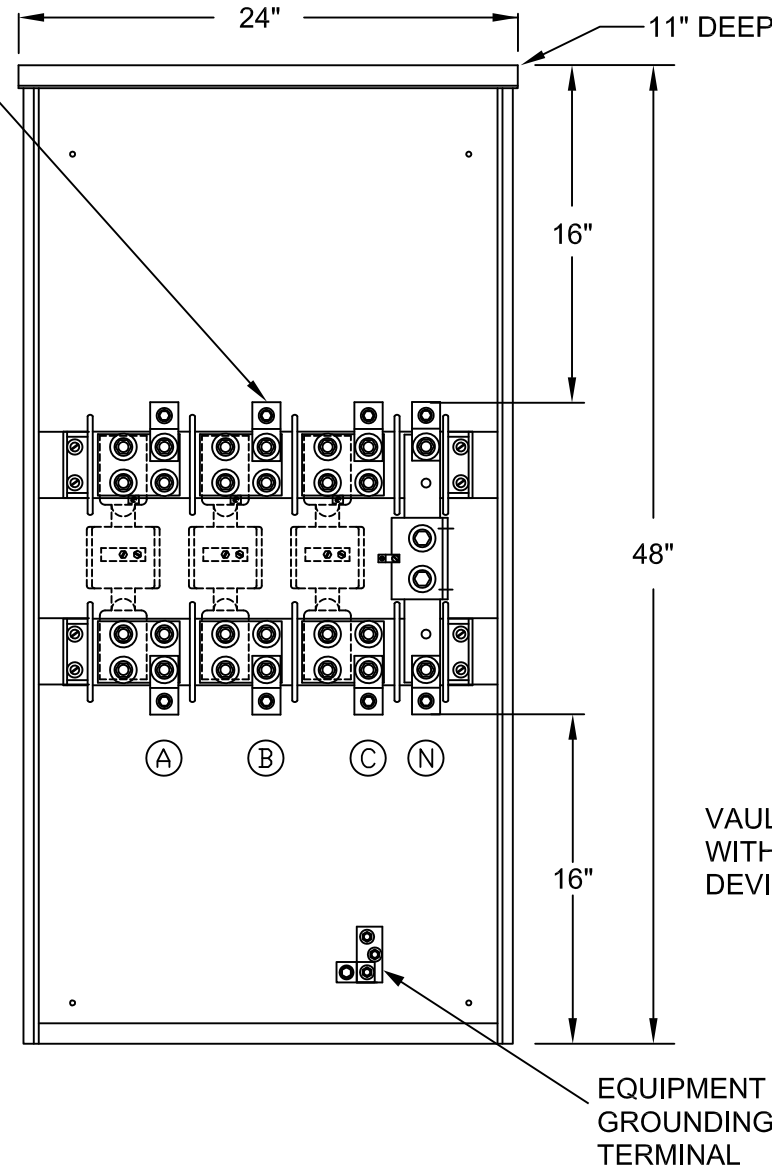
| Amps | Volts Max. | Phase/Wires | Unprotected Fault Current Rating | Enclosure Size | | |
|------|------------|-----------------|----------------------------------|----------------|--------|-------|
| | | | | Width | Height | Depth |
| 400* | 250V | 3 Phase, 4 Wire | 42,000 | 24" | 48" | 11" |

* 400A C/T CABINETS AT 250V MUST BE USED WHEN A 400A FUSED SWITCH IS USED FOR THE MAIN.

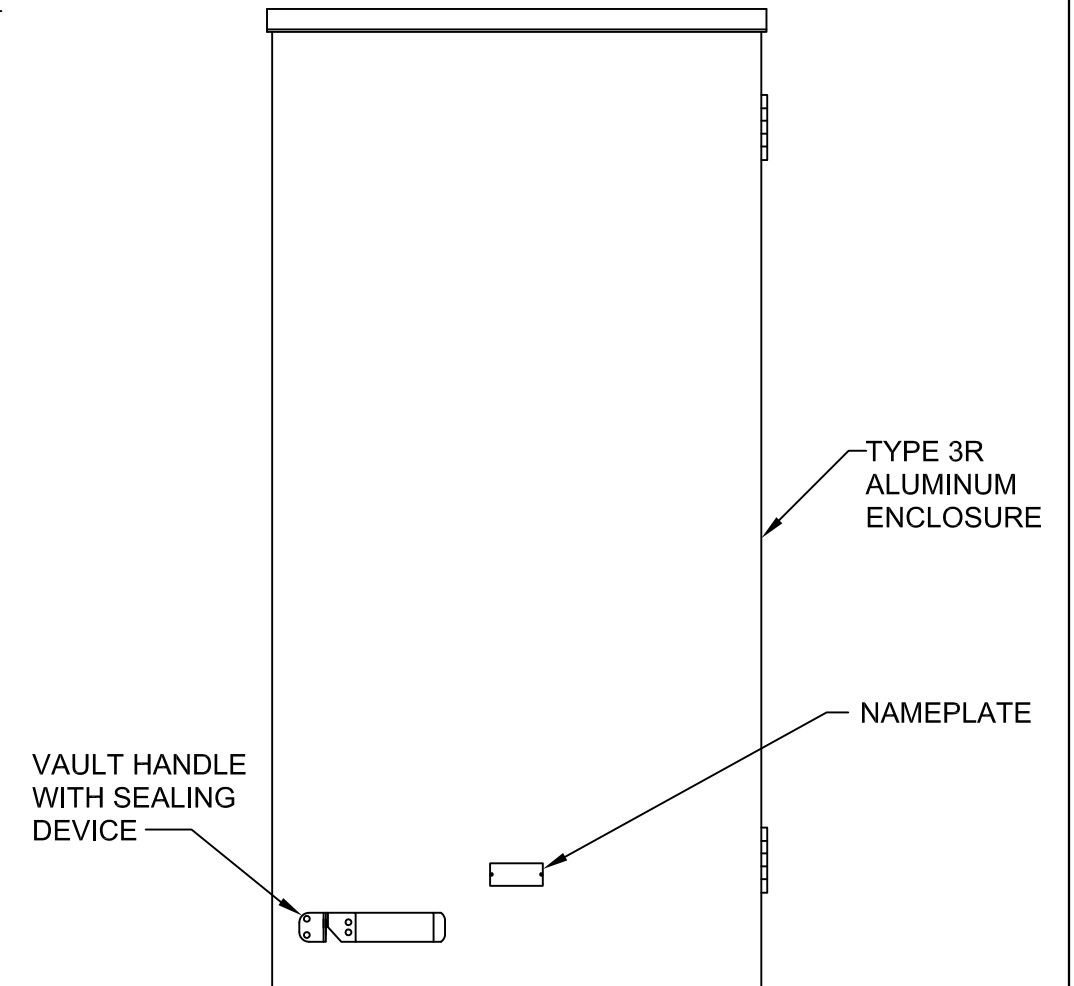


LINE AND LOAD LUG PROVIDED WILL ACCEPT 1-600MCM-4 OR 2-350 MCM-1/0 COPPER OR ALUMINUM CONDUCTORS. 1 LUG IS PROVIDED PER PHASE AND NEUTRAL, LINE & LOAD.

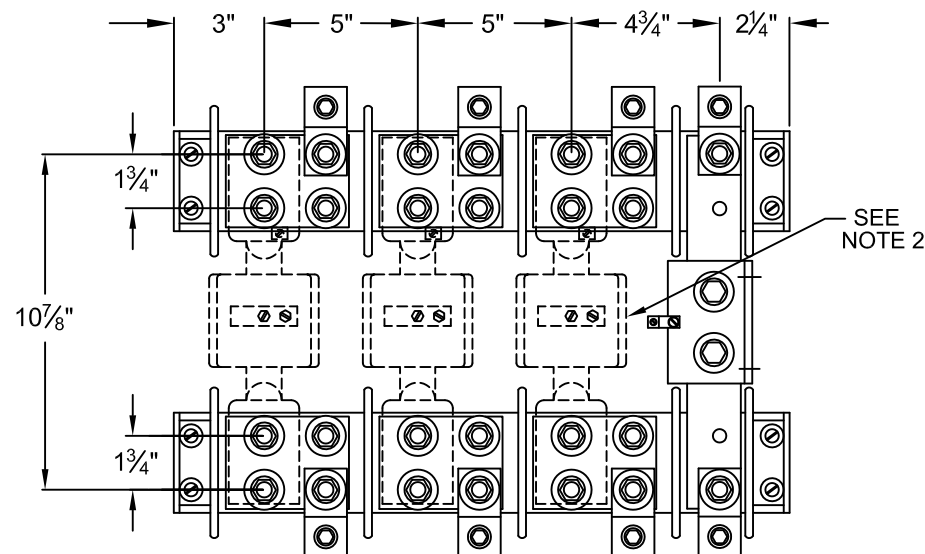
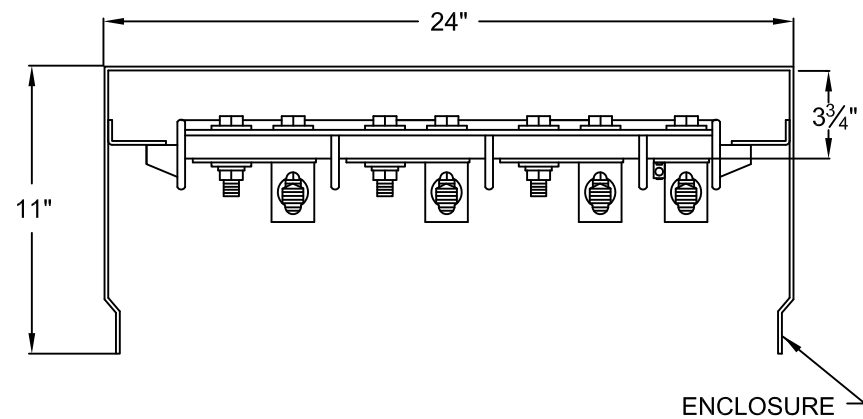
FRONT INTERIOR VIEW



FRONT ENCLOSED VIEW



INTERIOR DETAIL



GENERAL NOTES:-

- 1 C/T AND LUG LANDING PADS AND NEUTRAL ARE RATED 400 AMPS.
- 2 CURRENT TRANSFORMERS ARE PROVIDED BY THE UTILITY CO.
- 3 LINE AND LOAD LUG PROVIDED WILL ACCEPT 1-600MCM-#4 OR 2-350MCM-1/0 COPPER OR ALUMINUM CONDUCTORS. 1 LUG IS PROVIDED PER PHASE & NEUTRAL AS SHOWN, LINE & LOAD.

TALON

Metering

Description: **400A, 250V AC Max, 3Ph 4Wire, Outdoor Current Transformer Cabinet**