

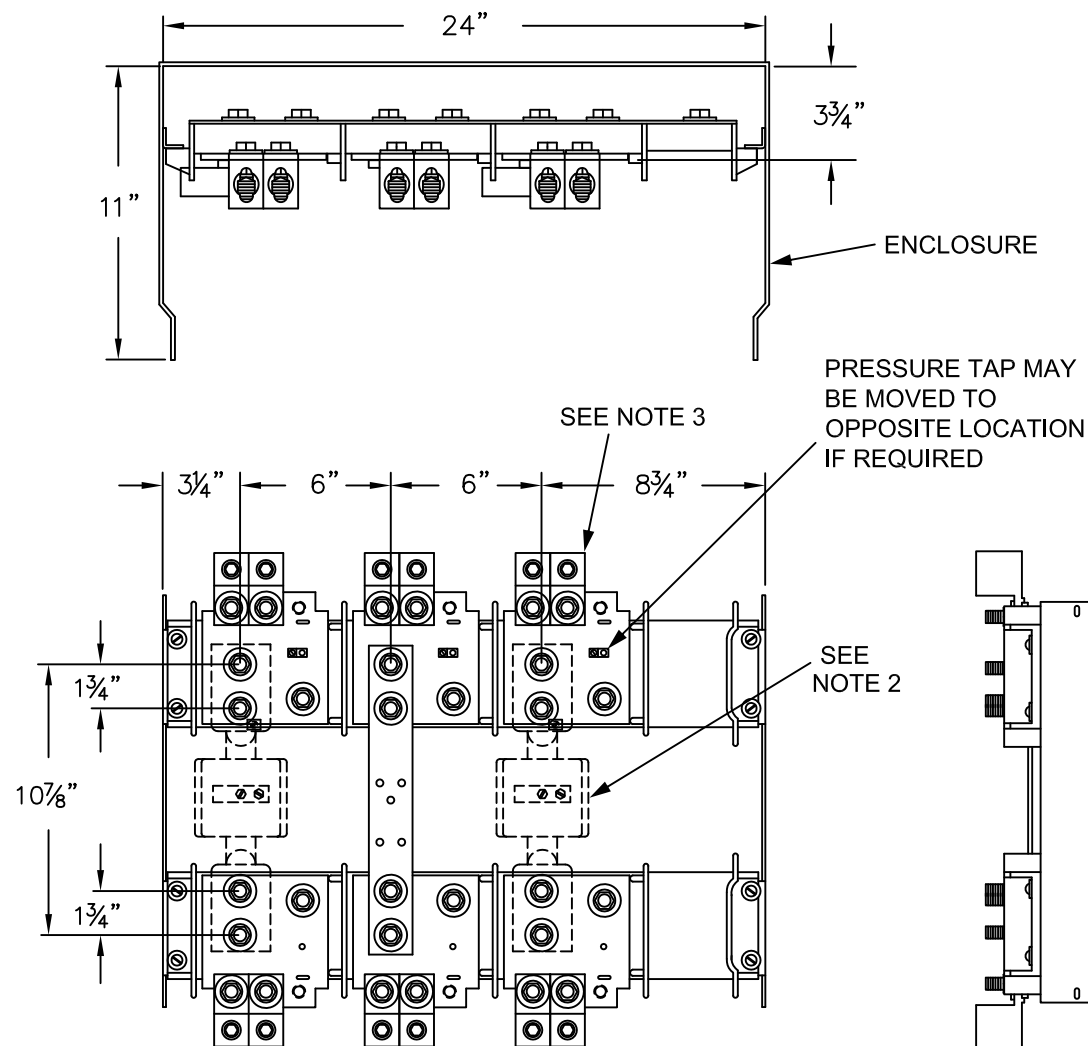
Catalog Number: T364811PT338MR

Amps	Volts Max.	Phase/Wires	Unprotected Fault Current Rating	Enclosure Size		
				Width*	Height	Depth
600/800	600V	3 Phase, 3 Wire	65,000	36"	48"	11"

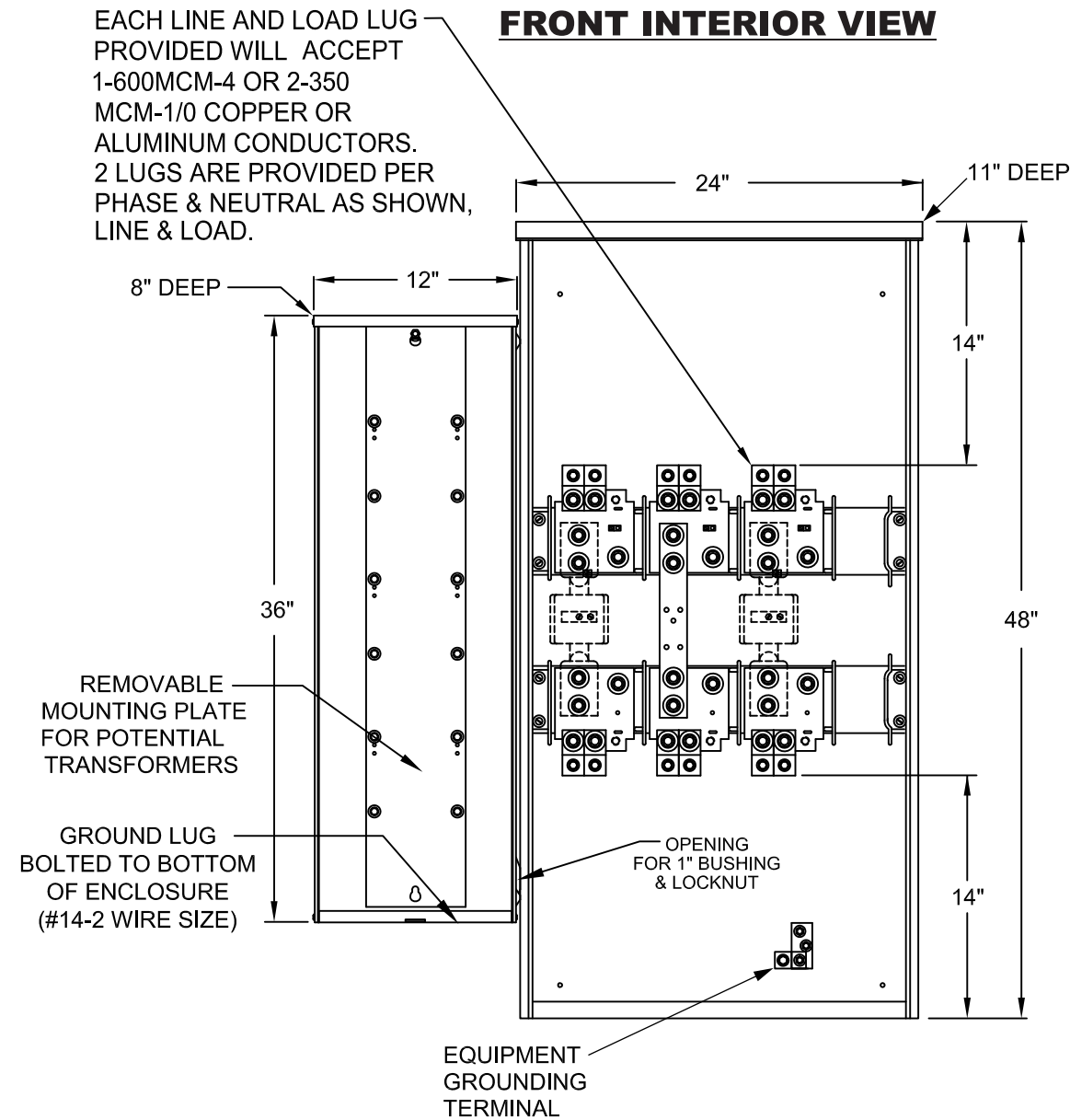
*Width includes 12" wide potential transformer enclosure mounted on left side of cabinet.



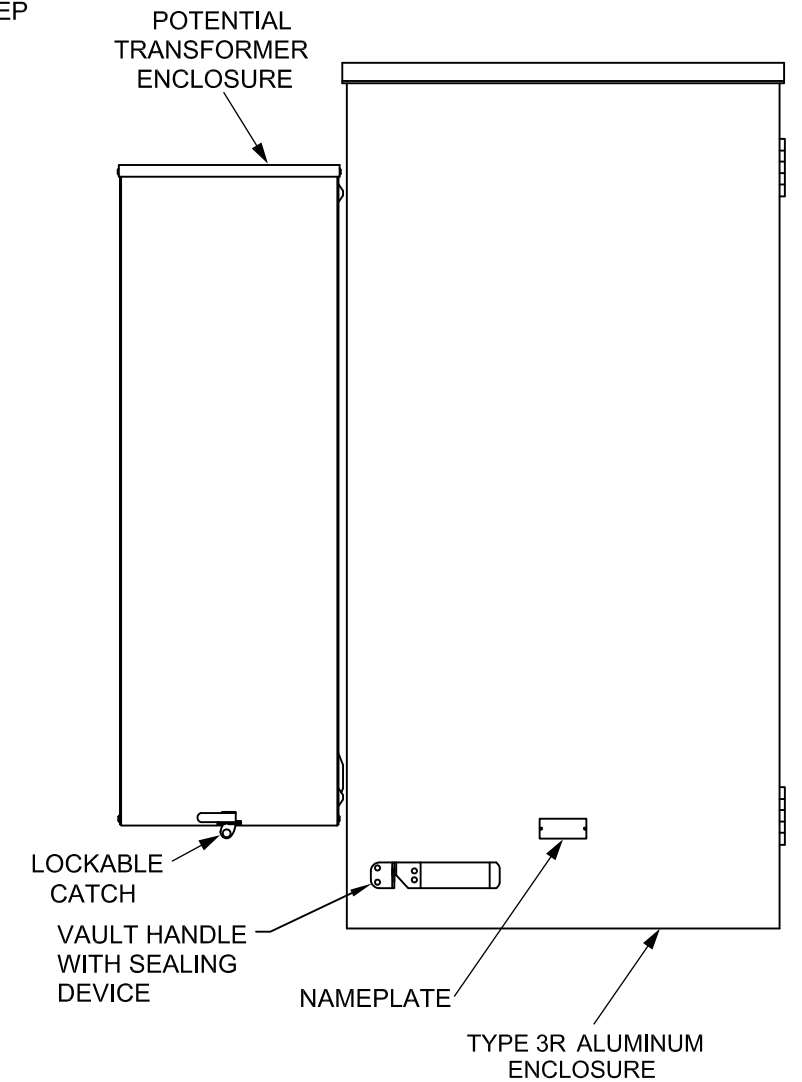
INTERIOR DETAIL



FRONT INTERIOR VIEW



FRONT ENCLOSED VIEW



GENERAL NOTES:

1. C/T AND LUG LANDING PADS AND NEUTRAL ARE RATED 800 AMPS.
2. CURRENT TRANSFORMERS ARE PROVIDED BY THE UTILITY CO.
3. EACH LINE AND LOAD LUG PROVIDED WILL ACCEPT 1-600MCM-#4 OR 2-350MCM-1/0 COPPER OR ALUMINUM CONDUCTORS. 2 LUGS ARE PROVIDED PER PHASE AS SHOWN, LINE & LOAD. 1 ADDITIONAL LUG CAN BE ADDED WITHOUT MODIFICATION.

TALON

Metering

Description: **600/800A, 600V AC Max, 3Ph 3Wire, Outdoor Current Transformer Cabinet**