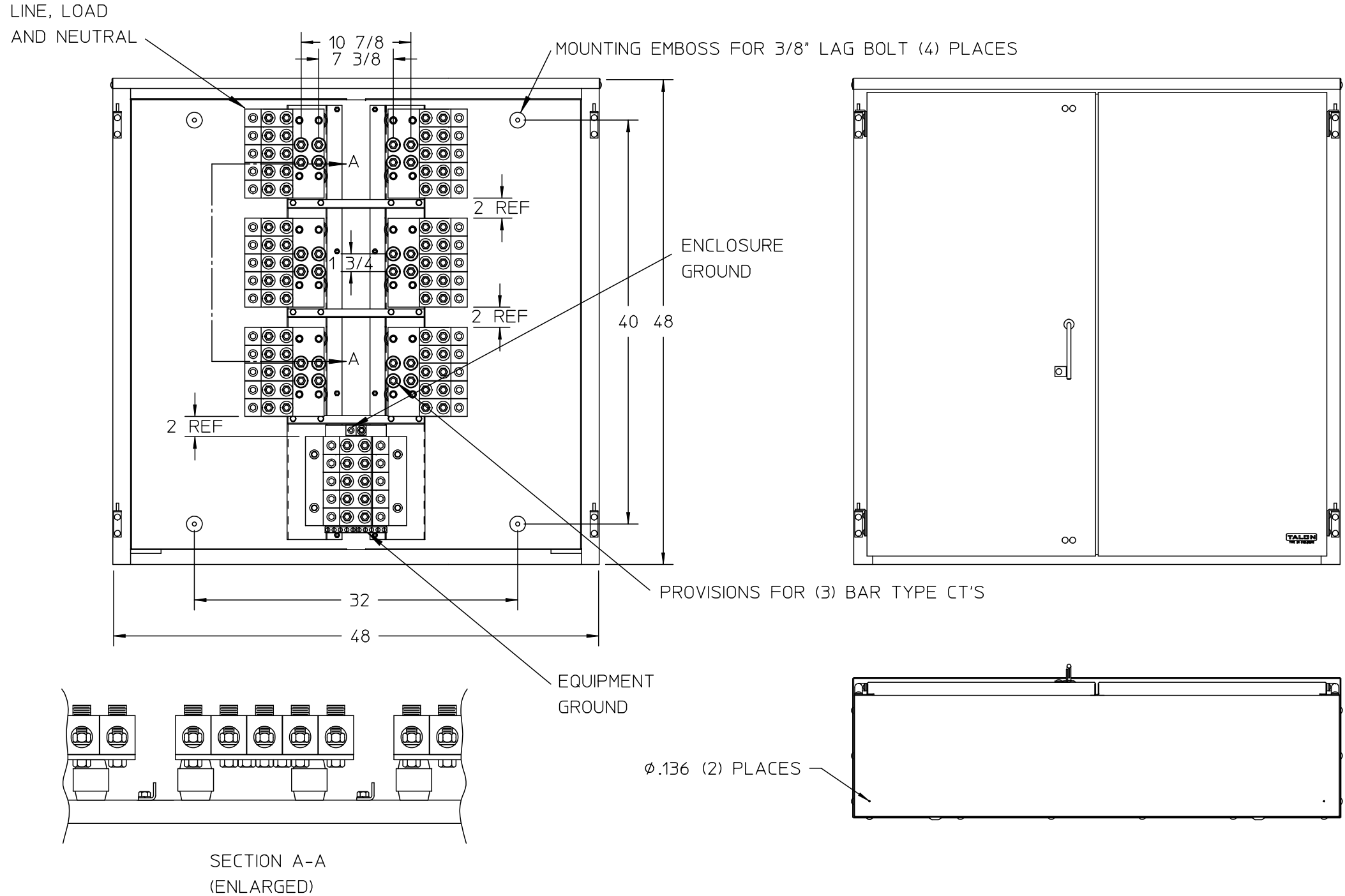


Features and Ratings

- 2000A Continuous, 2000A Max., 600V AC
- Outdoor Enclosure (NEMA Type 3R)
- Painted G90 Steel
- 3 Phase, 4 Wire
- For Underground Service

Connectors, Wire Sizes and Torques

CONNECTOR	WIRE SIZE	TORQUE
LINE, LOAD, NEUTRAL	300-750kcmil	500 IN.-LBS.
EQUIP GROUND	#14-3 AWG	50 IN.-LBS.
ENCL GROUND	#6-250kcmil	275 IN.-LBS.



© 2015 Copyright Siemens Industry, Inc.



Outdoor Current Transformer Enclosure

Description:		
CT ENC 2000A 3P DD		
5/25/11 JT	DO NOT SCALE DRAWING	Dwg No: LG124848CTS2