

Lighting Panel Kits

Based on customer and sales feedback, new field-installable kits are now available. These kits will provide easy access to parts and assemblies needed for field replacement or installation. Most of these kits are stocked and available for immediate shipment. Some may be made to order, but should ship within 10 working days in most cases.

Ref.	Catalog No.	Description	Primary Part Ref.	Comment / Intended use
A	LPDC01	Panelboard directory card, 5.5"x 5" - 10 pieces per pack	12-1110-01	New directory card kit includes 10 cards. New cards have 1-42 circuits and 43-90 plus a blank card.
B	BNK2	P2 neutral 3-step lug - Tin-plated aluminum - 1 piece per pack with mounting hardware	11-A-1862-01	Used in P2 neutral assemblies and can be replaced in the field. 14 connections for #6-1/0 wire and 12 connections for #14-#6 wire
C	BNK350N	Narrow 350 KCML lug - Tin-plated aluminum - 1 piece per pack with mounting hardware	11-A-1869-01	Used in P2/P3 neutral, ground and other locations. Replaceable in the field as needed. One #6-350KCML connection.
D	LPP2NB01	P2 Neutral 2-Step lug - Tin-plated aluminum - 1 piece per pack with mounting hardware	15-A-1800-01	Used in P2 neutral assemblies and can be replaced in the field. Three connections for #6-1/0 wire and 18 connections for #14-#6 wire.

Figure B

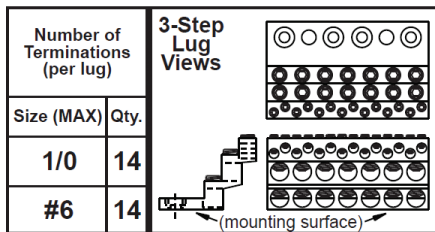


Figure C

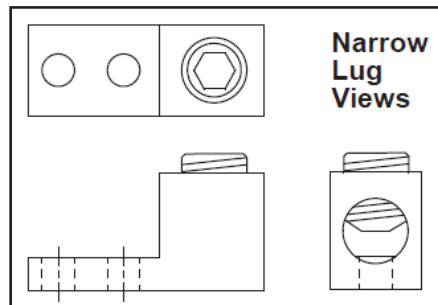
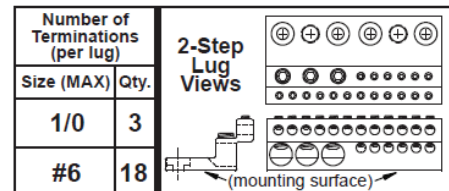


Figure D



Ref.	Catalog No.	Description	Primary Part Ref.	Comment / Intended use
E	LPJSPDNUT01	J-Type speed nut - lighting panel fronts - 25 pieces per pack	11-A-1820-01	Replacement J-nuts for use with lighting panel fronts and deadfronts. Also used in miscellaneous other applications.
F	DFFP01A	P1 Main blank filler plate - 1 piece per pack	11-D-4560-01	Use for original or revised P1 and other horizontal mount applications (Vertical for 400A Main). Also replaces 12-A-1801-01 from legacy panels.
G	DFFPED01	P1 ED Main filler plate - 1 piece	12-A-1802-01	Use for original or revised P1 and other horizontal mount applications.
H	DFFPFD01	P1 FD Main filler plate - 1 piece	12-A-1803-01	Use for original or revised P1 and other horizontal mount applications.
I	DFFPJD01	P1 JD Main filler plate - 1 piece	11-D-4522-01	Use for original or revised P1 400A main.
J	DFFPQJ01	P1 QJ Main filler plate 3-pole - 1 piece	12-A-1804-01	Use for original or revised P1 and other horizontal mount applications.
K	DFFPQJ02	P1 QJ Main filler plate 2-pole - 1 piece	12-A-1804-02	Use for original or revised P1 and other horizontal mount applications.
L	DFK07	P2 Deadfront center plate 21" - 1 piece	11-D-3018-07	Individual deadfront center plate 21 inches of unit space for P2 deadfronts
M	DFK08	P2 Deadfront center plate 24" - 1 piece	11-D-3018-08	Individual deadfront center plate 24 inches of unit space for P2 deadfronts
N	DFFP3AP01	P3 BL/BQD/ED/xGB adaptor plate 3" - 1 piece per pack	11-D-3033-01	Used for filling space in a P3 deadfront when a BL, BQD, ED or GB branch breaker is installed. Can be replaced in field if lost or damaged.
O	LPKEY01A	Key for FAS-Latch lock - 4 pieces per pack	B363A	Replacement key for FAS-Latch lock - standard key only - Contact Customer Support for special keys.
P	LPKEY01B	Key for FAS-Latch lock - 25 pieces per pack	B363A	Replacement key for FAS-Latch lock - standard key only - Contact Customer Support for special keys.
Q	LPLOCK01A	FAS-Latch lock with 2 keys, 14-16 gauge door - for Lighting Panel Type 1 front	11-1895-01	Replacement lock for use when door thickness is 14-16 gauge painted steel - approx. 0.07-0.09" thick.
R	LPLOCK02A	FAS-Latch lock with 2 keys, 12 gauge door - for Lighting Panel Type 1 front	11-1895-02	Replacement lock for use when door thickness is 12 gauge painted steel - approx. 0.10-0.12" thick.
S	LPLOCK03A	FAS-Latch lock with 2 keys, 10 gauge door - for Lighting Panel Type 1 Front	11-1895-03	Replacement lock for use when door thickness is 10 gauge painted steel - approx. 0.13-0.15" thick.

Figure E

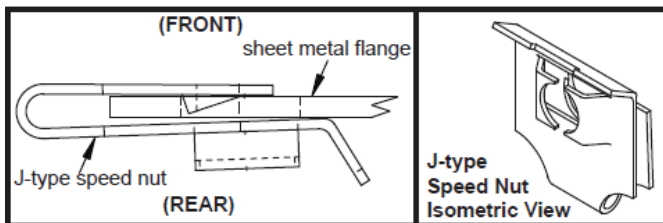
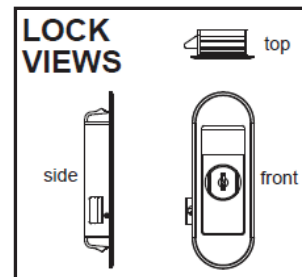


Figure Q, R, S



For more information visit: usa.siemens.com/panelboards.

Published by
Siemens 2018

Siemens Industry, Inc.
5400 Triangle Parkway
Norcross, GA 30092

Siemens Technical Support: 1-800-333-7421
info.us@siemens.com

Order No. RPBR-LPKIT-0418-CP

Printed in USA
All Rights Reserved
© 2018, Siemens Industry, Inc.
usa.siemens.com/panelboards

The technical data presented in this document is based on an actual case or on as-designed parameters, and therefore should not be relied upon for any specific application and does not constitute a performance guarantee for any projects. Actual results are dependent on variable conditions. Accordingly, Siemens does not make representations, warranties, or assurances as to the accuracy, currency or completeness of the content contained herein. If requested, we will provide specific technical data or specifications with respect to any customer's particular applications. Our company is constantly involved in engineering and development. For that reason, we reserve the right to modify, at any time, the technology and product specifications contained herein.