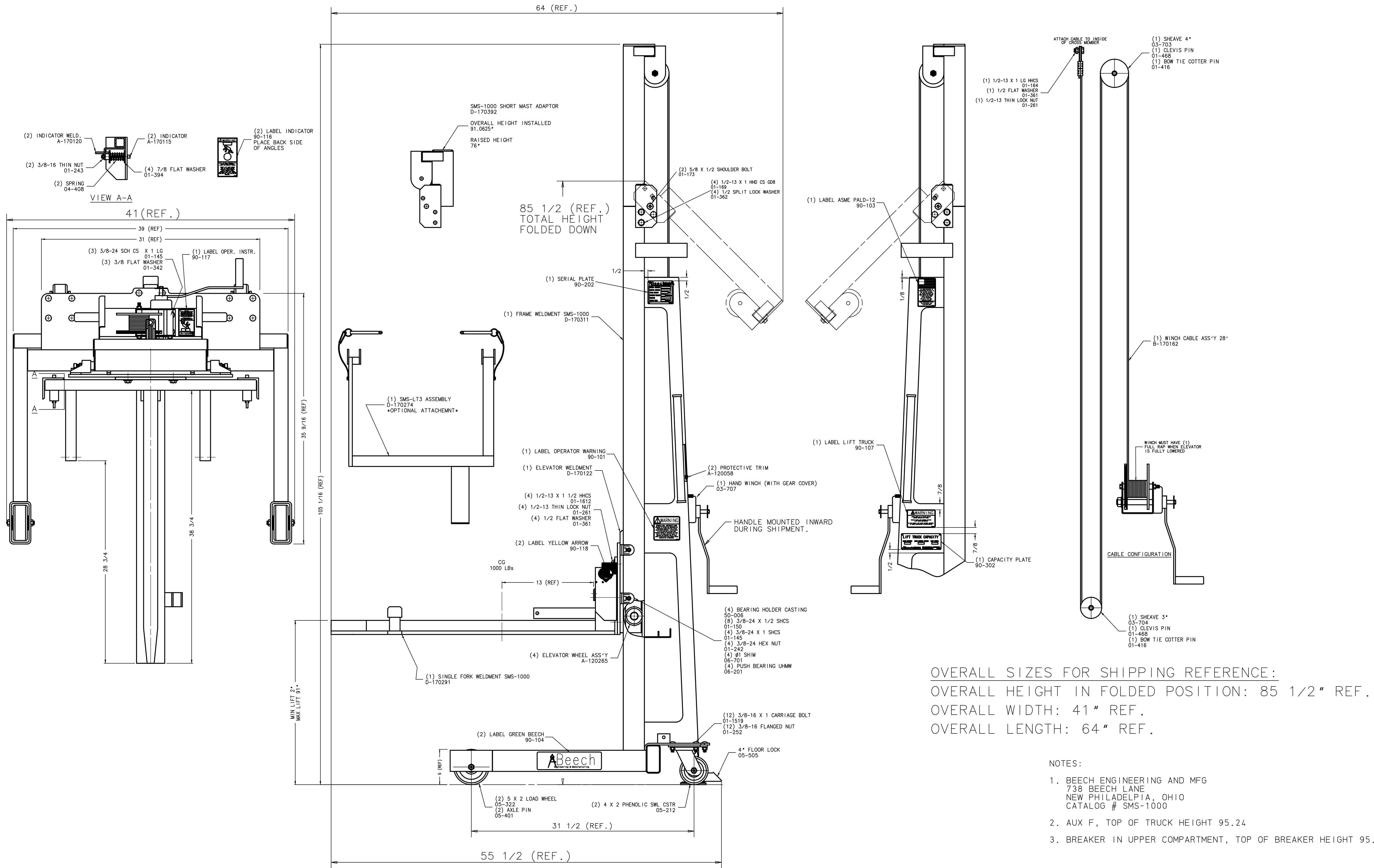


Als Betriebsheimnis anvertraut. Alle Rechte vorbehalten. Proprietary data, company confidential. All rights reserved.



OVERALL SIZES FOR SHIPPING REFERENCE:
 OVERALL HEIGHT IN FOLDED POSITION: 85 1/2" REF.
 OVERALL WIDTH: 41" REF.
 OVERALL LENGTH: 64" REF.

- NOTES:
- BEECH ENGINEERING AND MFG
738 BEECH LANE
NEW PHILADELPHIA, OHIO
CATALOG # SMS-1000
 - AUX F, TOP OF TRUCK HEIGHT 95.24
 - BREAKER IN UPPER COMPARTMENT, TOP OF BREAKER HEIGHT 95.95

SIMILAR TO: 18-822-415-072

Tolerance Toleranz (ISO) 1-Place decimal=0.06 2-Place decimal=0.03 3-Place decimal=0.01 Angular=1°	Material/Werkstoff	Mass : Masse Unit: Einheit inch	Paper Size Format D Scale Maßstab NTS 14/0968	Date Datum 12-02-2014	MGS	Date Datum 15-02-2007	Designation Benennung POTTER	Department Abteilung PTD-MI-R-D	Location Standort RALEIGH	Item Number Sachnummer GX-001-912-001	ISO-Projection Page Blatt 1-
Material No./Nr. 1	Material No./Nr. 2	Released Freigegeben Freigabe	Mod./Ref.No. Änd.-Vorg.-Nr.	Revision Revision	SIEMENS						