

GM-SG Power Module 15 kV, 1200 A, 50 kA

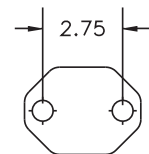
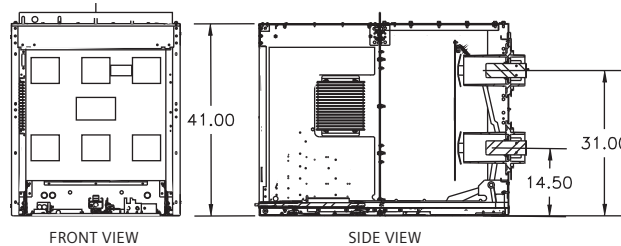
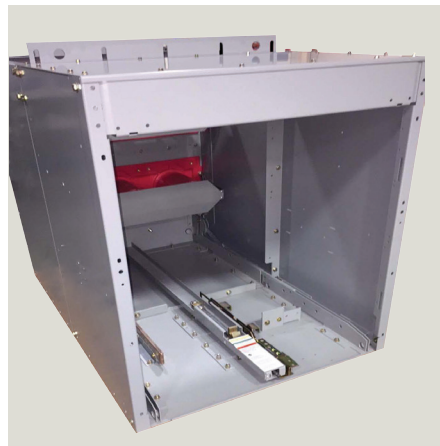
The Siemens type GM-SG Power Module helps bring industrial customers simplicity and flexibility. Designed to work within any project parameters and configured to assure complete operator safety. Features ergonomic design and guaranteed easy installation.

Is for use in industrial plants, commercial buildings, electric utility systems, cogeneration installations and other electrical systems. It is commonly used for protection and switching of transformers, motors, generators, capacitors, buses, distribution feeder lines and, in general, for protection of any medium-voltage power circuit.

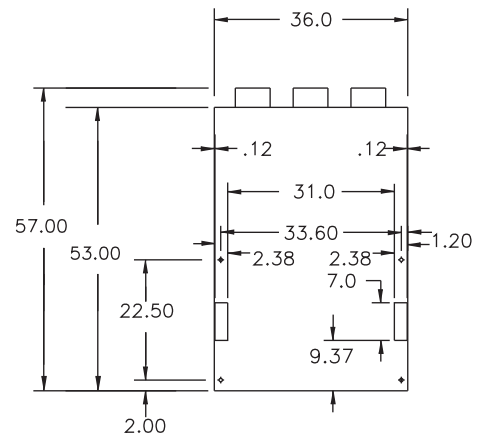
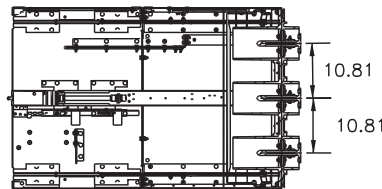
Includes:

- Metal shutters
- Ground stab assembly
- Breaker position indicator
- Mechanism-operated cell (MOC) switch/Truck-operated cell (TOC) switch
- Drawout type secondary disconnects

Part Number: MVSGSKPM1200



TYPICAL 1200A VCB
CONNECTOR STAB
BOLTING PATTERN
USE 1/2" HARD WARE



**Published by
Siemens 2018**

Siemens Industry, Inc.
5400 Triangle Parkway
Norcross, GA 30092

1-800-241-4453
info.us@siemens.com

Printed in USA
Order No. PDFL-GMSGP-0118
All Rights Reserved
© 2018, Siemens Industry, Inc.
usa.siemens.com/mvcomponents

The technical data presented in this document is based on an actual case or on as-designed parameters, and therefore should not be relied upon for any specific application and does not constitute a performance guarantee for any projects. Actual results are dependent on variable conditions. Accordingly, Siemens does not make representations, warranties, or assurances as to the accuracy, currency or completeness of the content contained herein. If requested, we will provide specific technical data or specifications with respect to any customer's particular applications. Our company is constantly involved in engineering and development. For that reason, we reserve the right to modify, at any time, the technology and product specifications contained herein.