

3-5/16 HUB OPENING  
(2) PLACES

LINE TERMINALS  
#14-1/0 CU  
#12-1/0 AL

NEUTRAL & GROUND TERMINALS:  
LARGE: #14-1/0 CU, #12-1/0 AL  
SMALL: #14-6 CU, #12-6 AL

UL LISTING MARK  
LOCATED ON  
INSIDE SIDEWALL

2 POSITION  
PLUG-IN BREAKER  
MOUNTING

INSULATED BARRIER

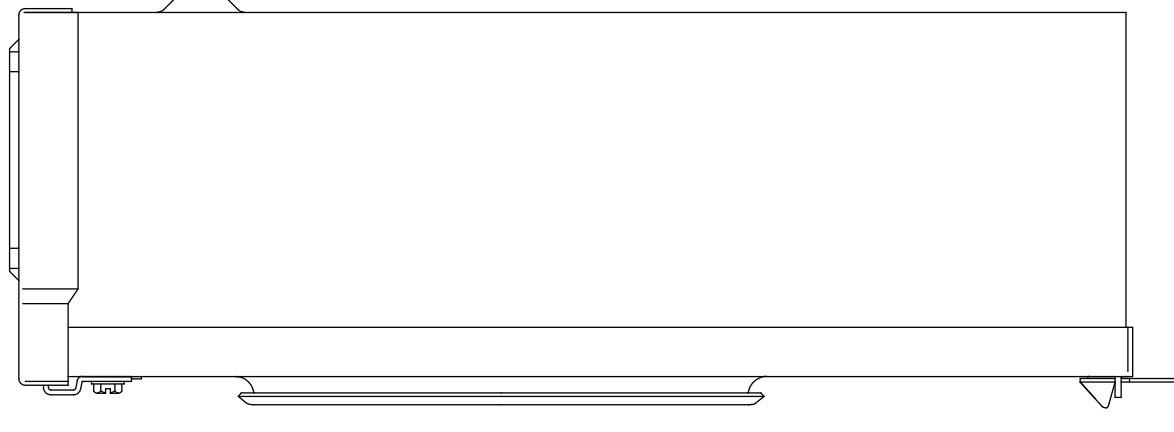
14

2, 1-1/2, 1-1/4, 1, 3/4, 1/2 KO  
(3) PLACES

1/2 KO  
(2) PLACES

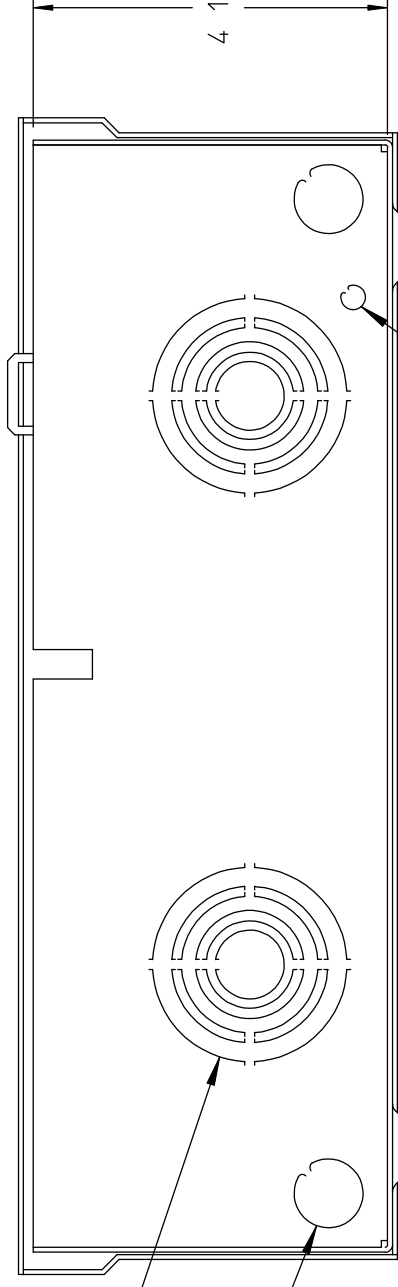
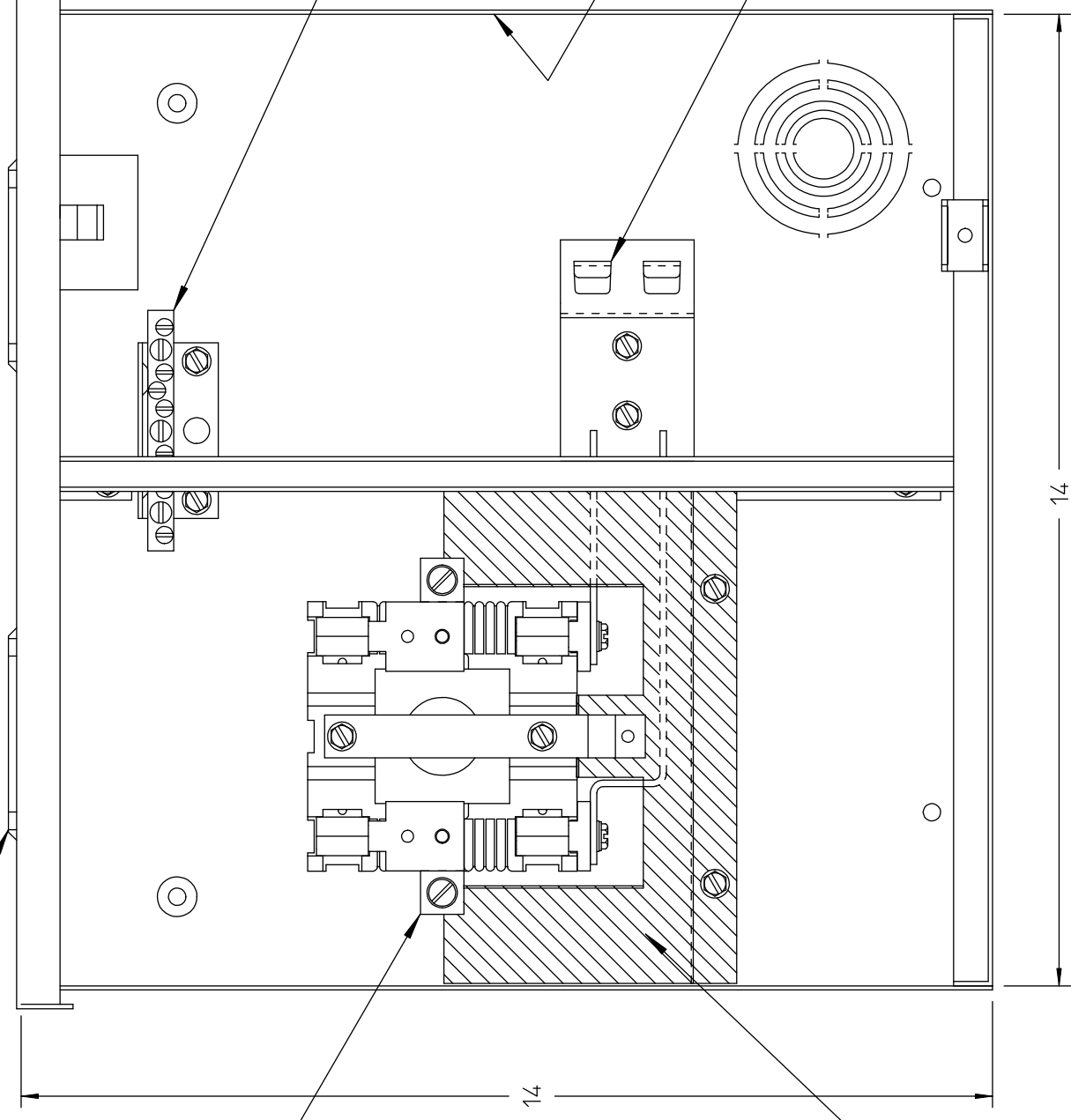
.312 DIA. KO

4 1/2



NOTES:

- 1) PAINT: GREY
- 2) UNIT IS FABRICATED FROM 16GA. GALVANIZED STEEL.
- 3) ELECTRICAL RATINGS:  
125 AMP, 1 PHASE, 3 WIRE,  
120/240 V.A.C.
- 4) PRODUCT LABEL ATTACHED TO INSIDE OF HINGED COVER.
- 5) SNAP TYPE SEALING RING INCLUDED.
- 6) SIEMENS METER SOCKET COVER PLATE INCLUDED.



**TOLERANCES UNLESS OTHERWISE NOTED**  
SHEARED BLANKS & FRACTIONS ±.032  
OPEN NOTCH TO SHEARED EDGE ±.032  
PUNCHED HOLES/SHAPES ±.003  
FORMED FLANGES ±.032  
ALL OTHER DIMENSIONS ±.015  
FINAL ASSEMBLY DRAWING DIMENSIONS ARE NOMINAL. REFER TO INDIVIDUAL PART/SUB FOR ALLOWABLE CUMULATIVE TOLERANCE

12-5-2003

DLT'D NOTE ABOUT MURRAY CRTN LBL BDD

DATE 2-24-98 BY CB

DWG NO. SEMM0202ML1125H

SKT/BKR 125A 1P H0

Siemens Energy & Automation, Inc.  
Residential Products Division

THIS DRAWING CONTAINS PROPRIETARY AND CONFIDENTIAL INFORMATION WHICH MUST NOT BE DUPLICATED, USED OR DISCLOSED OTHER THAN AS EXPRESSLY AUTHORIZED. SPECIFICATIONS SUBJECT TO CHANGE WITHOUT NOTICE.