

## Series 5, Series 6, FC-I and FC-II Distribution VB610 Twin 200A Vacu-Break Mounting Kit

Installation  
Instructions

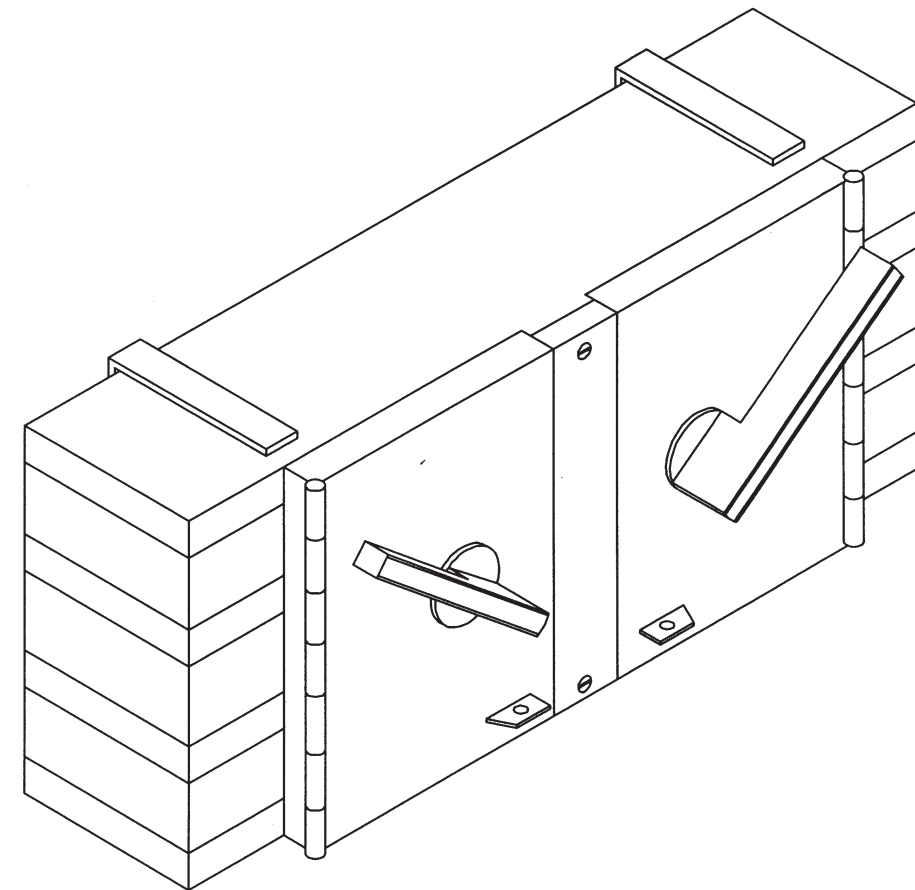
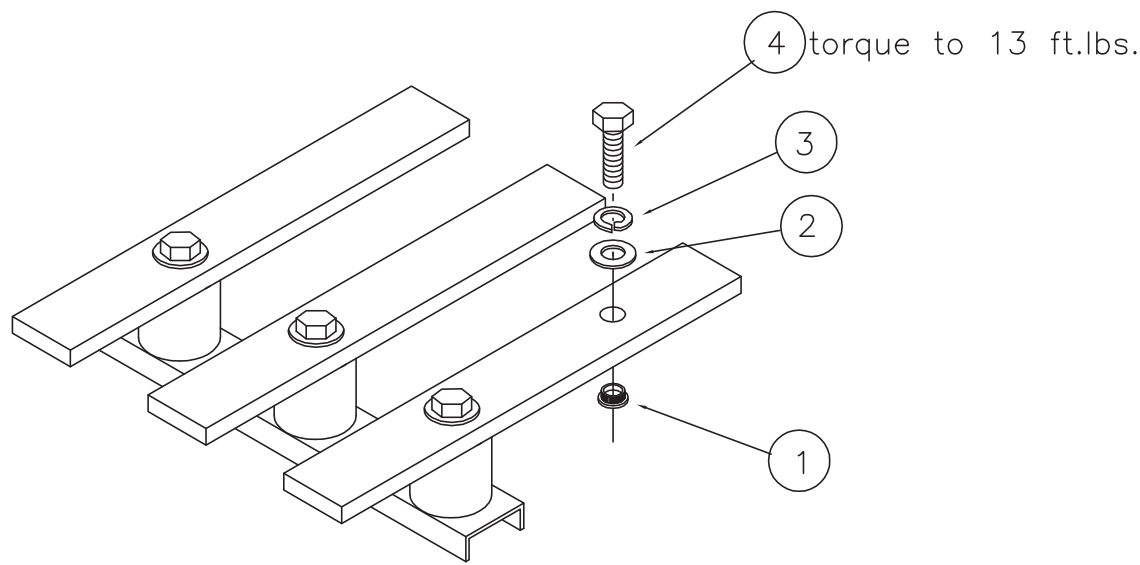
This kit is for the use of adapting series 6 mounting kits to be used in series 5 type panel construction.

Series 5 construction has .406 dia. holes in the interior vertical bus.

- (1) Use 5/16 insert in the .406 dia holes being certain that the shoulder on the insert is pulled up flush with back of bus bar.
- (2) Drill out appropriate holes in branch bus (see item 10, fig.4) a minimum of .344 dia. to accommodate 5/16-18 bolts.

### SERIES 5 ADAPTOR KIT

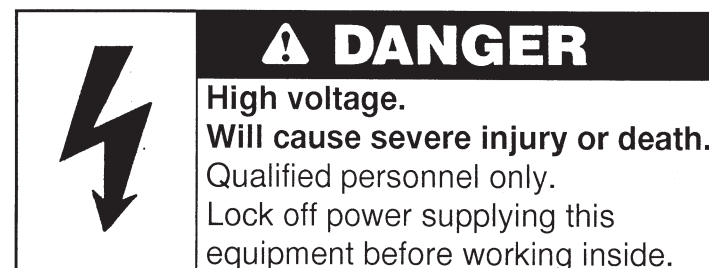
IT.	DESCRIPTION	QTY.
1	5/16 INSERT	3
2	5/16 FLAT WASHER	3
3	5/16 LOCK WASHER	3
4	5/16-18 X 1 1/4 HEX HEAD MACH. SCREW	3



12-B-2018-01 Rev. 0

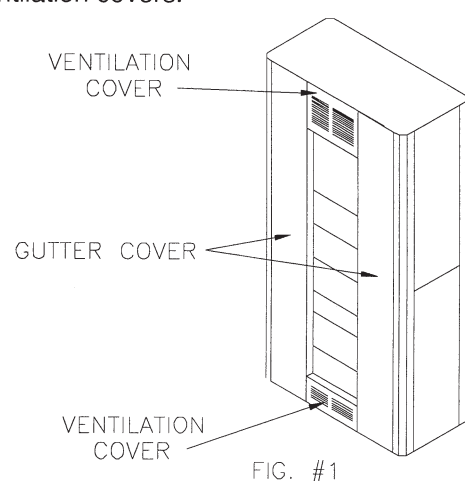
## Installation Instructions

The following instructions are for the installation of a Siemens Twin 200A Vacu-Break in a type Series 5 (panel & distribution sections), Series 6, FC-I and FC-II Distribution for series 5 see additional instructions on page 3. This device will require 10" of unit space. The parts provided in this kit are for connections for a 3 phase 3 wire or 4 wire system. For 3 phase 3 wire discard neutral lug and hardware (fig.9).

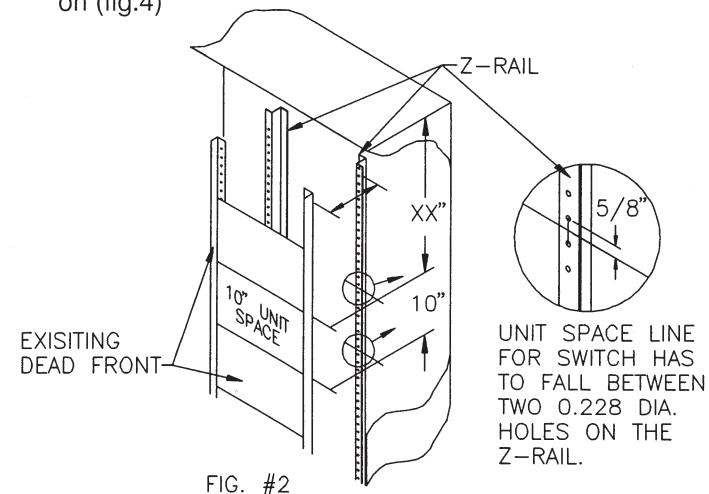


**High voltage.**  
Will cause severe injury or death.  
Qualified personnel only.  
Lock off power supplying this  
equipment before working inside.

1. Lock off all power supplying this equipment before working on it.
2. Reference fig. (1) - Remove the (2) gutter covers and (2) ventilation covers.



3. Reference fig. (2) - To mount this switch in the switch board, 10" of empty unit space is required. To locate the mounting position, measure from the top of the unit to the top of the empty unit space filler on the dead front. Transfer this dimension from the top unit along the Z-rail and mark. This will be the unit line as shown on (fig.4)

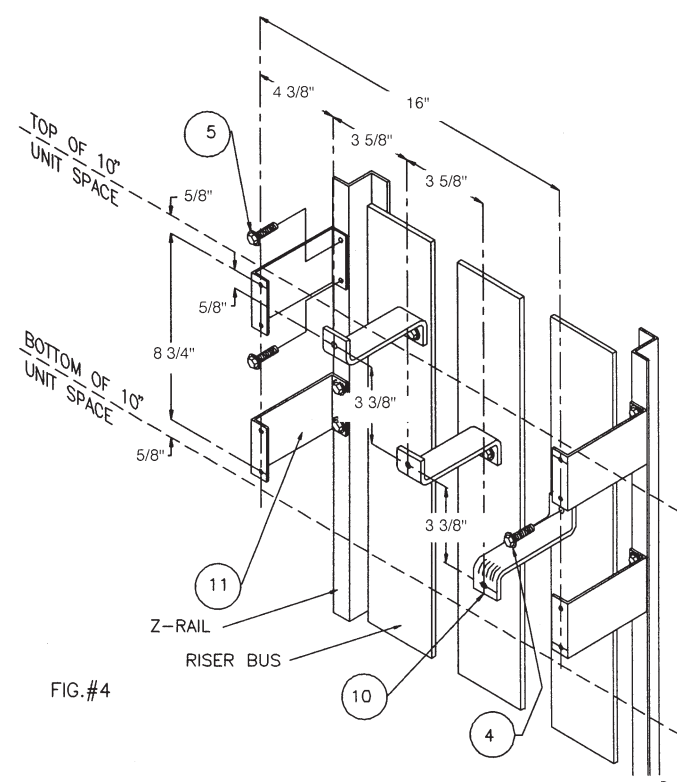


4. Remove the Vacu-Break kit from the shipping box and check the hardware against the following list.

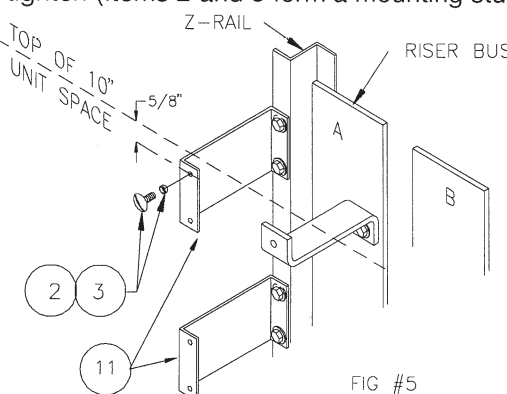
ITEM	DESCRIPTION	QTY.
1	200A TWIN VACU BREAK	*
2	1/4-20 X 1/2 SLOTTED TRUSS SCREW	2
3	1/4" SPACER	2
4	MOUNTING HARDWARE KIT	1
5	1/4-20 X 3/8 SLOTTED HEX WASHER HEAD SCREW	8
6	350 KCMIL LUG	2
7	3/8-16 x 1" CARRIAGE BOLT	2
8	3/8 BELLEVILLE WASHER NUT	2
9		
10	SWITCH CONNECTOR	3
11	SUPPORT BRACKET	4
12	5/16-18 X 1.5 SLOTTED HEX WASHER HEAD SCREW	3
13	1/4-20 X 1.00 SLOTTED HEX WASHER HEAD SCREW	2
14	SERIES 5 ADAPTOR KIT (NOTE SEE PAGE 3)	1

\* ITEMS COME WITH THE SWITCH.

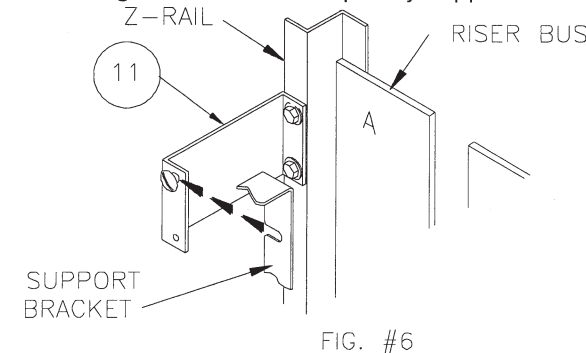
5. Reference fig. (4) The first items to be installed will be the support bracket (item 11). Locate the mounting hole 5/8" down from the top of the 10" unit space and fasten the bracket to the Z-rail by using 1/4-20 x 3/8 thread forming screw (item 5), also connect the lower bracket up 5/8" from the bottom of the 10" unit space using the same hardware. Position the switch connectors (item 10) per fig. #4 and fasten them to interior bus with 1/4-20 thread forming screws (item 4).



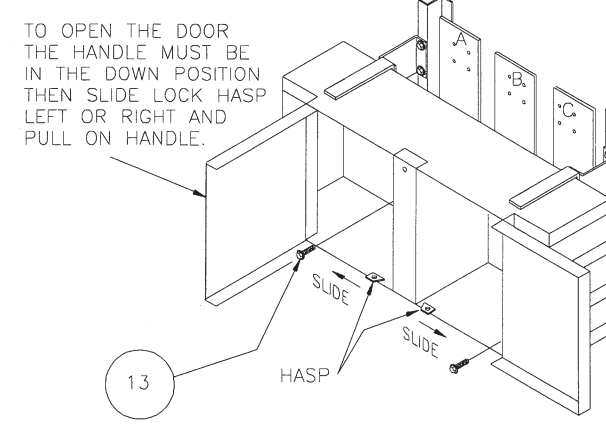
6. Reference fig. (5) - Install items 2 and 3. Locate the upper support brackets (item 11) on both Z-rails. Insert the 1/4-20 x 1/2" truss screw (item 2) through the spacer (item 3) and then into the top 7/32" dia. holes and tighten (Items 2 and 3 form a mounting stud).



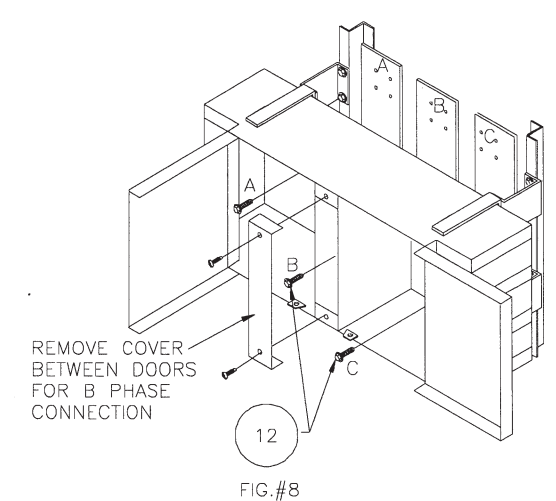
7. Reference fig. (6) - Located on back side of the switch are two support brackets. Each bracket has a 1/4" diameter hole and 3/8" open end slot. The open end slot is located near the top side of the switch. Line up the open end slots to the right side of the mounting stud located on the support bracket (item 11). Then slide the switch to the left onto the mounting stud. This will give the switch temporary support.



8. Reference fig. (8) - Open both fuse compartment doors to locate the through holes for 1/4-20 x 1" thread forming screws (item 13). The through holes are inside, near the bottom left and bottom right corners of the switch. Insert 1/4-20 x 1" thread forming screws (item 13) into the through holes that line up with 7/32" diameter holes in the support bracket and then tighten. This will give the switch total support.



9. Reference fig. (8) - With both fuse compartment doors open, locate the through hole for the A phase connection on the left side near the top and the C phase connection on the right side near the bottom. Attach with 5/16-18 x 1 1/2" hex washer head screw (item 12) For the B phase connection, remove the cover between the doors. Locate the through hole in the center of the opening. Attach with 5/16-18 x 1 1/2" hex washer head screw (item 12) Torque all connections to the values as specified on the label on the rear side of the dead front cover.



10. Reference fig. (9) - On 3 phase 4 wire systems the Vacu-Break assembly kit will also require a neutral lug connection to the branch neutral located near the top or the bottom of the Z-rail. Fasten the 350 kcmil lugs (item 6) to the branch neutral using 3/8 - 16 x 1" carriage bolt (item 7) and 3/8" belleville washer nut (item 8).

