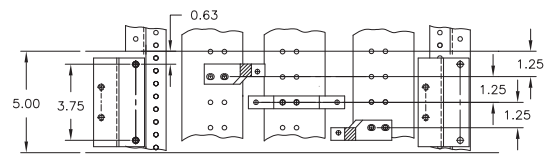
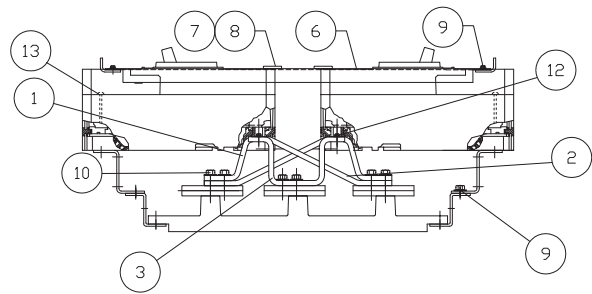


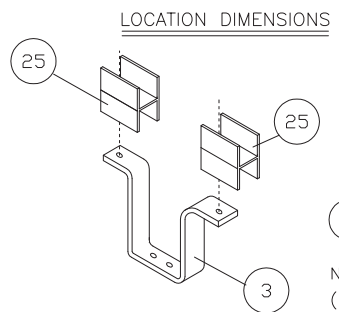
Third Angle Projection  
 Rev. 4  
 Sht. 1  
 Dwg. No. 15-B-2014-00



**⚠ DANGER**

Hazardous voltage. Will cause death or serious injury.

Keep out. Qualified personnel only. Disconnect and lock off all power before working on this equipment.



TORQUE VALUES

- (12) 50 in.-lbs. AL.
- (10) 72 in.-lbs. CU.

NOTES

- (1) FOR PROVISIONS - FILL BLANK SPACE WITH ITEMS #15 & 25
- (2) F6-FRAME BRANCH BREAKER 70-250 AMPERE DOUBLE MOUNTING

4	1C-267A	3-8-00
3	1A-280	11-30-90
2	1A042	11-3-88

1	1A045	10-5-88	Unless otherwise specified dimensions are in inches Tolerances are non-cumulative and are as follows unless specified otherwise. .XX ± .030 .XXX ± .015 Angular ± 2° Do not scale drawing	Confidential - Property of <b>Siemens Industry, Inc.</b> Norcross, GA	
0	1A036	8-25-88		F6 FRAME MOUNTING SPP (SHALLOW) BRANCH BUS	
Rev	C.N.	Date	Dwg No. <b>15-B-2014-00</b> Rev. <b>4</b> Scale NONE Sheet 1 of 1		
Dwn	DB	Date 3-8-00			
Chk	RHR	Date 3-8-00			
Apvd	RHR	Date 3-8-00			

Apvd PM	ITEM	DESCRIPTION	PC. NO.	QTY.
11-30-90	1	F6 PH. A&C FRONT BRANCH BUS	12-B-4002-02	2
	2	F6 PH. A&C REAR BRANCH BUS	12-B-4003-02	2
	3	F6 PH. B BRANCH BUS	12-B-4004-02	1
	4			
	5	F6 MOUNTING BRACKET	15-B-3018-01	2
	6	5" F6 COVER PLATE	12-6028-01	1
	7	CIRCUIT ID CARD	11-7505-01	2
	8	CARD HOLDER	11-7506-01	2
	9	14-20 X 3/8 SHWHSW	11-1553-02	6
	10	STRAP-BUS HARDWARE KIT	11-B-2023-05	1
	11			
	12	1/4-20 X 1 SHWHSW	11-1553-09	6
	13	1/4-20 X 4 SRHMS	11-1542-19	4
	14			
	15	BLANK FILLER	12-5531-10	2
	16	10-24 X 5/8 RHSNB	11-1630-02	4
	17	10-24 LOCK NUT	11-1821-02	4
	18	NEUTRAL LUG ASSEMBLY	12-B-2105-05	2
	19			
	20			
	21			
	22			
	23			
	24			
	25	PH. B BARRIER (FOR PROVISIONS)	11-7548-02	4
	26			
	27			
	28	INSTRUCTION SHEET	31-1202-01	1
	29	CARTON LABEL	15-A-1027-01	1
	30	CARTON	48001056	1
	31			
	32			
	33			
	34			
	35			
Revisions	1: 1A-280	11-30-90		
	2: 1A-232	01-11-91		
	3: 1B-908	5-8-95		
	4: 1C-267A	1-18-00		
	5: 1C-831A	04-12-04		
	6: 1C-831B	07-25-06		
	7: 1E-143A	02-11-09		
Chk	SH	11-30-90	FOR I-T-E TYPE BREAKERS: FJ6, F6, HF6, FXD6, FD6, HFD6 70-250 AMPERES FOR (SHALLOW) PANELBOARDS MERCHANDISE KIT NO. SF6	
By	MC	11-20-90		
Confidential - property of <b>Siemens Industry, Inc.</b> Norcross, GA		<b>F6-FRAME MOUNTING</b> <b>S4, COPPER BRANCH BUS</b> Title	<b>15-B-2014-03</b> Dwg No.	<b>7</b> Rev.
		Sht. 1	Of 1	

FOR USE WITH FXD6, FD6 AND HFD6 FRAME BREAKERS MOUNTED IN SPP/FPP/S4/F1/P4 PANELBOARDS (SHALLOW DEPTH).