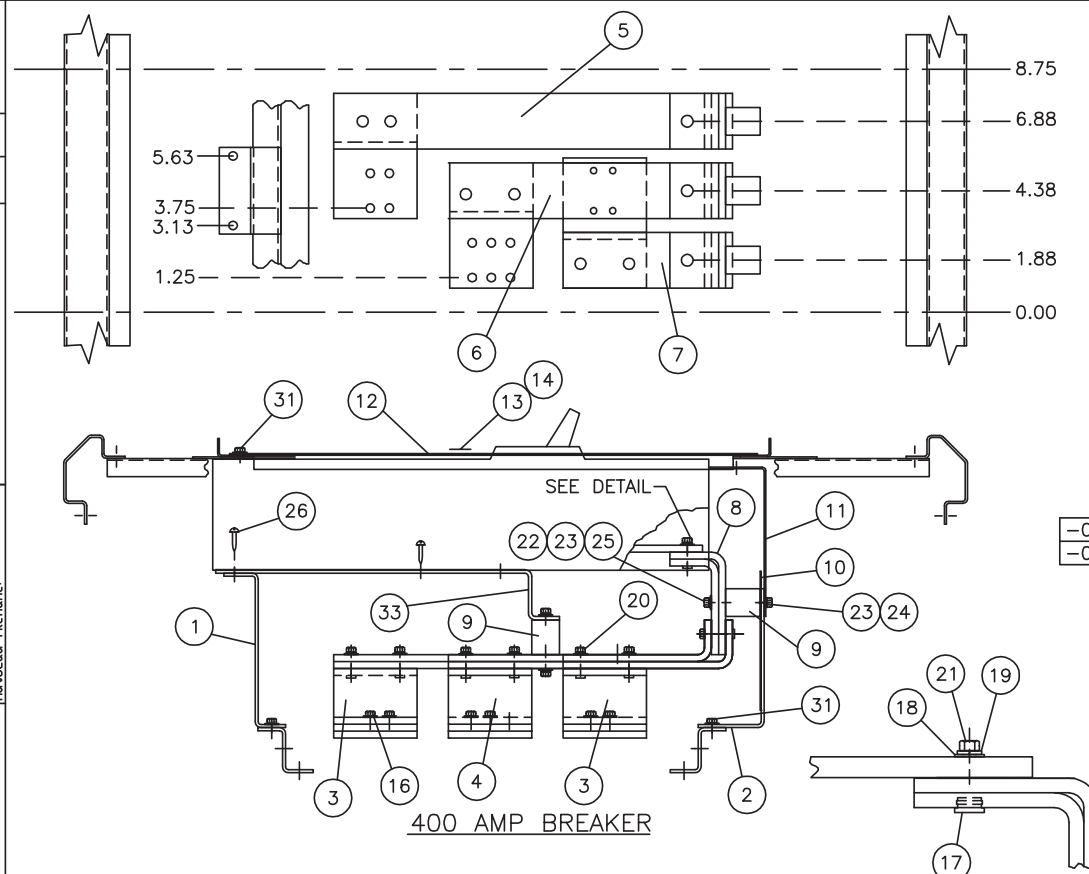


Dwg. No. 12-5719
 Rev. 10
 Sht 1
 Third Angle Projection



-01 CAT# 6CLJ1
 -02 CAT# SCJD

-02	-01	ITEM	PC. NO.	DESCRIPTION
1	1	1	16-6114-01	MOUNTING BRACKET
1	1	2	16-6120-02	SUPPORT BRACKET
2	2	3	17-6768-02	ØAC JITNEY
1	1	4	17-6769-02	ØB JITNEY
1	1	5	12-6776-06	ØAC LONG CONNECTOR
1	1	6	12-6776-05	ØB CONNECTOR
1	1	7	12-6776-04	ØAC SHORT CONNECTOR
3	3	8	17-6770-02	PAD CONNECTOR
4	4	9	11-1800-02	1-1/4" INSULATOR
1	1	10	11-7721-01	BARRIER
1	1	11	11-6415-02	BARRIER
1	1	12	12-6194-02	COVER PLATE
1	1	13	11-7505-01	CIRCUIT I.D. CARD
1	1	14	11-7506-01	CARD HOLDER
		15		
2	2	16	11-B-2022-05	STRAP-BUS HARDWARE KIT
12	12	17	11-1620-04	5/12-18 INSERT
12	12	18	11-1615-06	5/16" FLAT WASHER
12	12	19	11-1618-04	5/16" LOCK WASHER
6	6	20	11-1566-05	5/16-18 X 1" HHMS
6	6	21	11-1566-07	5/16-16 X 1-1/4" HHMS
6	6	22	11-1615-04	1/4" FLAT WASHER
8	8	23	11-1618-03	1/4" LOCK WASHER
4	4	24	11-1546-02	1/4-20 X 1/2" HHMS
4	4	25	11-1546-05	1/4-20 X 7/8" HHMS
4	4	26	11-1542-14	1/4-20 X 2-3/4" SRHMS
-	1	27	12-B-2105-04	NEUTRAL LUG ASSEMBLY
1	-	28	12-B-2105-06	NEUTRAL LUG ASSEMBLY
		29		
		30		
6	6	31	11-1553-02	1/4-20 X 3/8" SHHWSW
1	1	32	12-5531-11	FILLER PLATE ASSEMBLY
1	1	33	16-6115-01	AUXILIARY MOUNTING BRACKET
1	-	34	31-1225-01	INSTRUCTION SHEET
1	1	35	15-A-1027-01	CARTON LABEL
1	1	36	48001057 ▲	CARTON
-	1	37	11-5570-02	SERIES 5 CONVERSION KIT
-	1	38	31-1187-01	INSTRUCTION SHEET
		39		
		40		

PC. -01 ASSY. USED ON STRAP KIT 6CLJ1
 PC. -02 ASSY. USED ON STRAP KIT SCJD

FOR ITE BREAKER TYPES: CLJ, CJD6

TORQUE VALUES:
 (16)-72 IN/LBS.
 (29)-20 FT/LBS.
 (20)(21)-12 FT/LBS.

⚠ DANGER

Hazardous voltage. Will cause death or serious injury.

Keep out. Qualified personnel only. Disconnect and lock off all power before working on this equipment.

Rev	C.N.	Date	Desc
10	IC-831B	7-31-06	
9	IC-831A	04-12-04	
8	1B-908	5-8-95	
7	1B-359	11-11-92	
6	1A-939	7-22-91	
5	1A-280	11-30-90	
4	1A-077	6-08-89	
3	1A-066	2-16-89	
2	8A-093	7-15-88	
1	8A-071		
0	8A-001	3-30-87	

Unless otherwise specified dimensions are in inches
 Tolerances are non-cumulative and are as follows unless specified otherwise.
 .XX ± .030
 .XXX ± .015
 Angular ± 2°
 Do not scale drawing

Dwn	TWT	Date 3-30-87
Chk	JRM	Date 9-5-91
Apvd	SH	Date 9-13-91

Confidential - Property of
Siemens Industry, Inc.
 Norcross, GA

CJD FRAME MOUNT
 SERIES 6 - BRANCH

Dwg. No. 12-5719
 Scale NONE
 Sheet 1 of 1

Rev. 10

FOR USE WITH CJD6 FRAME BREAKERS MOUNTED IN SPP/FPP/S5/F2/P5 PANELBOARDS (DEEP BOX).