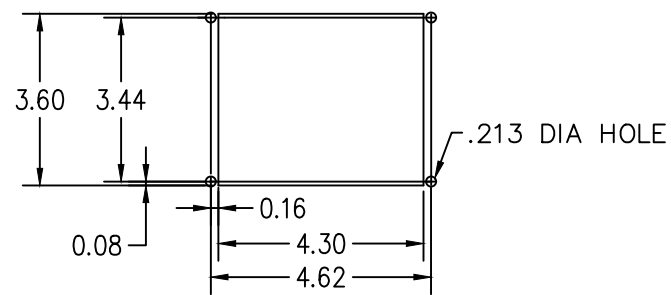
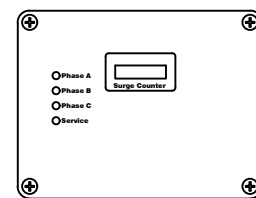
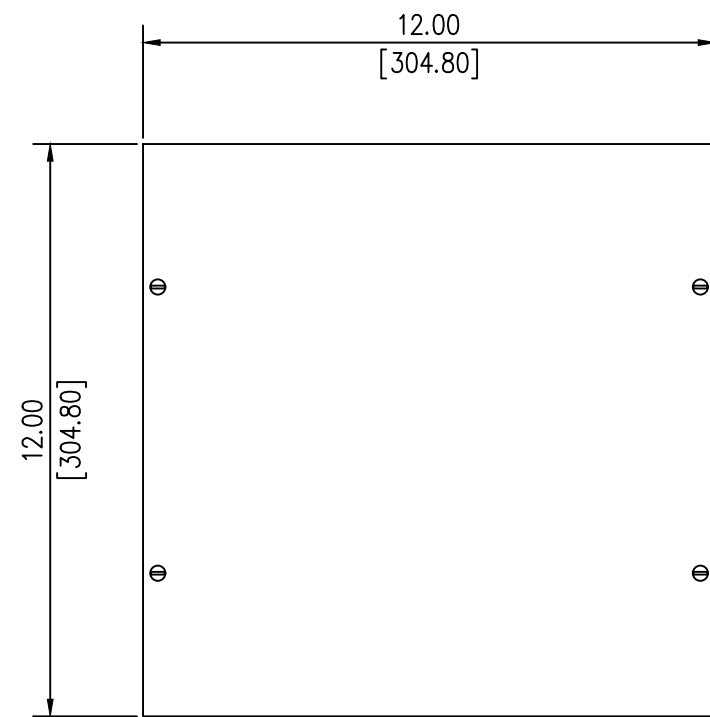
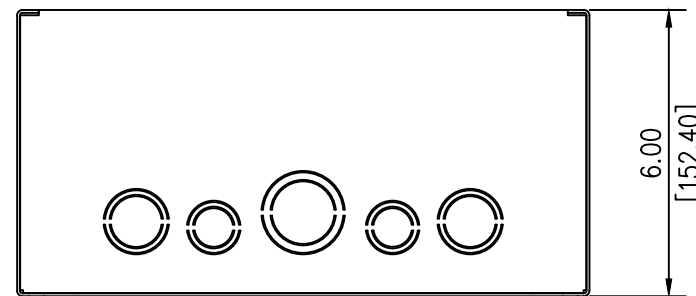
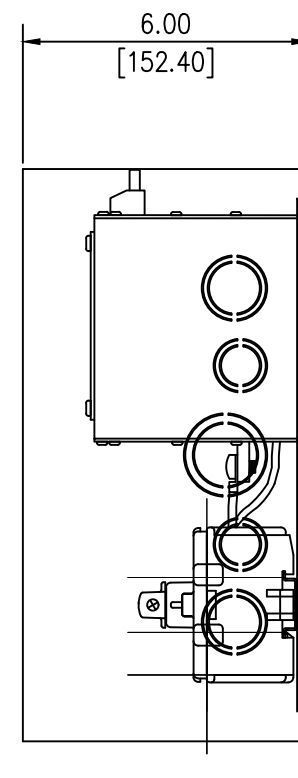
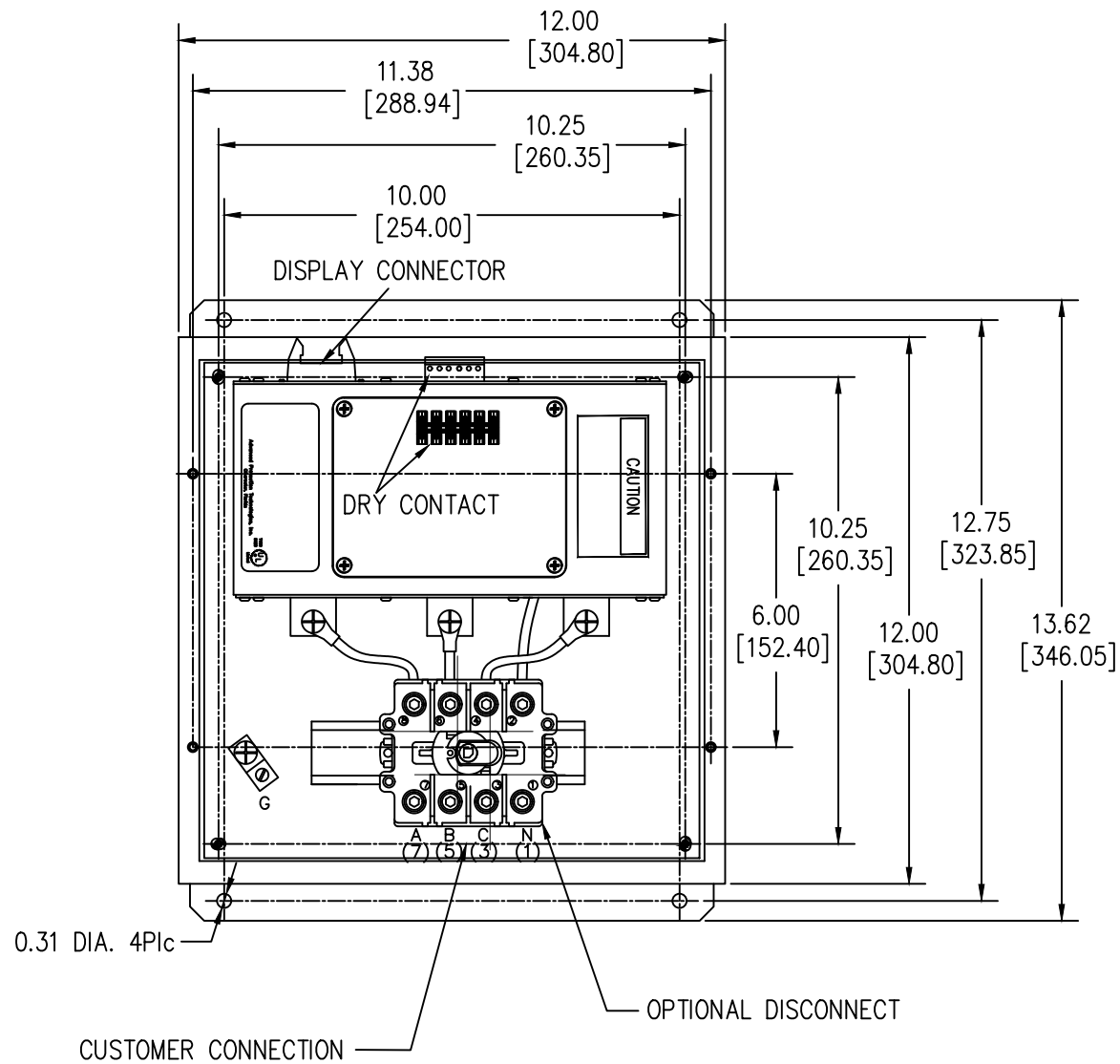


# SURGE PROTECTIVE DEVICE (SPD) WEIGHTS & DIMENSIONS NEMA RATING: 1



REMOTE DISPLAY CUT-OUT REFERENCE



ENCLOSURE SPECS.  
DESC: ENCLOSURE, SCREWCOVER PULLBOX  
DIM: 12"H x 12"W x 6"D  
MAT: CARBON STEEL, 16 GAUGE  
FINISH: POWDERCOAT ANSI 61 GRAY  
NEMA RATING: 1  
DEVICE WEIGHT: 16.20LBS. (7.34KG.)

3-26-10	Date	Unless otherwise specified dimensions are in inches. Tolerances are non-cumulative and are as follows unless specified otherwise. .XX ± .020 .XXX ± .005 Angular ± 2' Do not scale drawing	Confidential - Property of <b>Siemens Industry, Inc.</b> Building Technologies Division
	C.N.	DRAWN H. DRIGGERS 8/17/09 ENGINEER M.JG 8/17/09 APPROVAL	TPS3-12 SERIES 100k-300k w/DS NEMA RATING: 1
	Rev		DWG NO. SIE_DW_TPS31230DS-1 SCALE NONE SHEET 1 of 1