

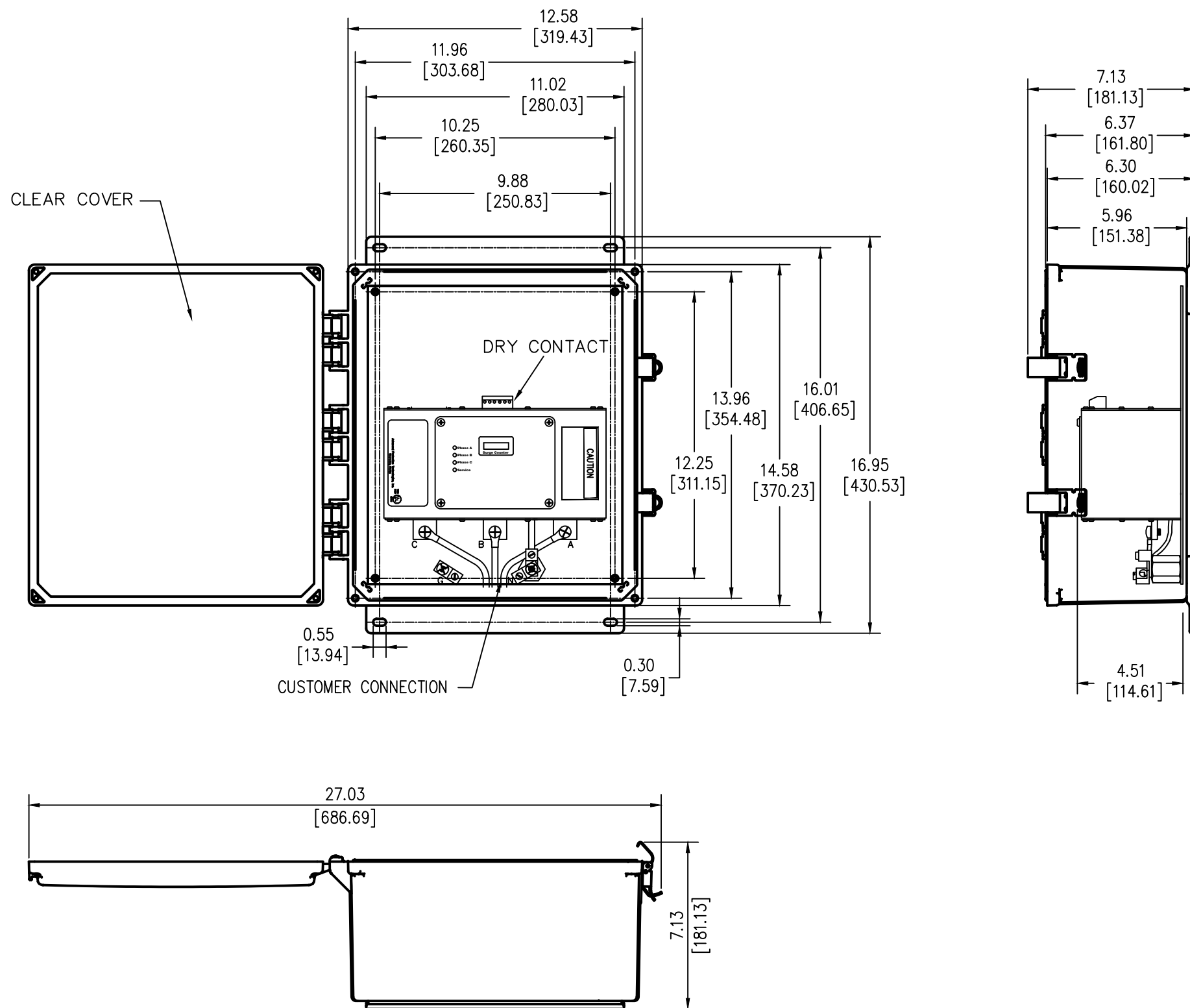
Rev -

Sht 1

Dwg. No. SIE_DW_TPS31230-4X

BORDERD Autocad filename: SIE_DW_TPS31230-4X

SURGE PROTECTIVE DEVICE (SPD) WEIGHTS & DIMENSIONS NEMA RATING: 4X NON METALLIC



ENCLOSURE SPECS.
 DESC: NON-METALLIC ENCLOSURE, HINGED
 DIM: 14"H x 12"W x 7"D
 MAT: POLYCARBONATE
 FINISH: GRAY
 NEMA RATING: 4X
 DEVICE WEIGHT: 12.40LBS. (5.62KG.)

Rev	C.N.	Date	Unless otherwise specified dimensions are in inches. Tolerances are non-cumulative and are as follows unless specified otherwise.		Confidential - Property of Siemens Industry, Inc. Building Technologies Division
			.XX	± .020	
			ENGINEER	H. DRIGGERS	8/17/09
			APPROVAL	M.J.G.	8/17/09
			TPS3-12 SERIES 100k-300k w/o DS NEMA RATING: 4X		
			DWG NO. SIE_DW_TPS31230-4X		REV -
			SCALE NONE		SHEET 1 of 1