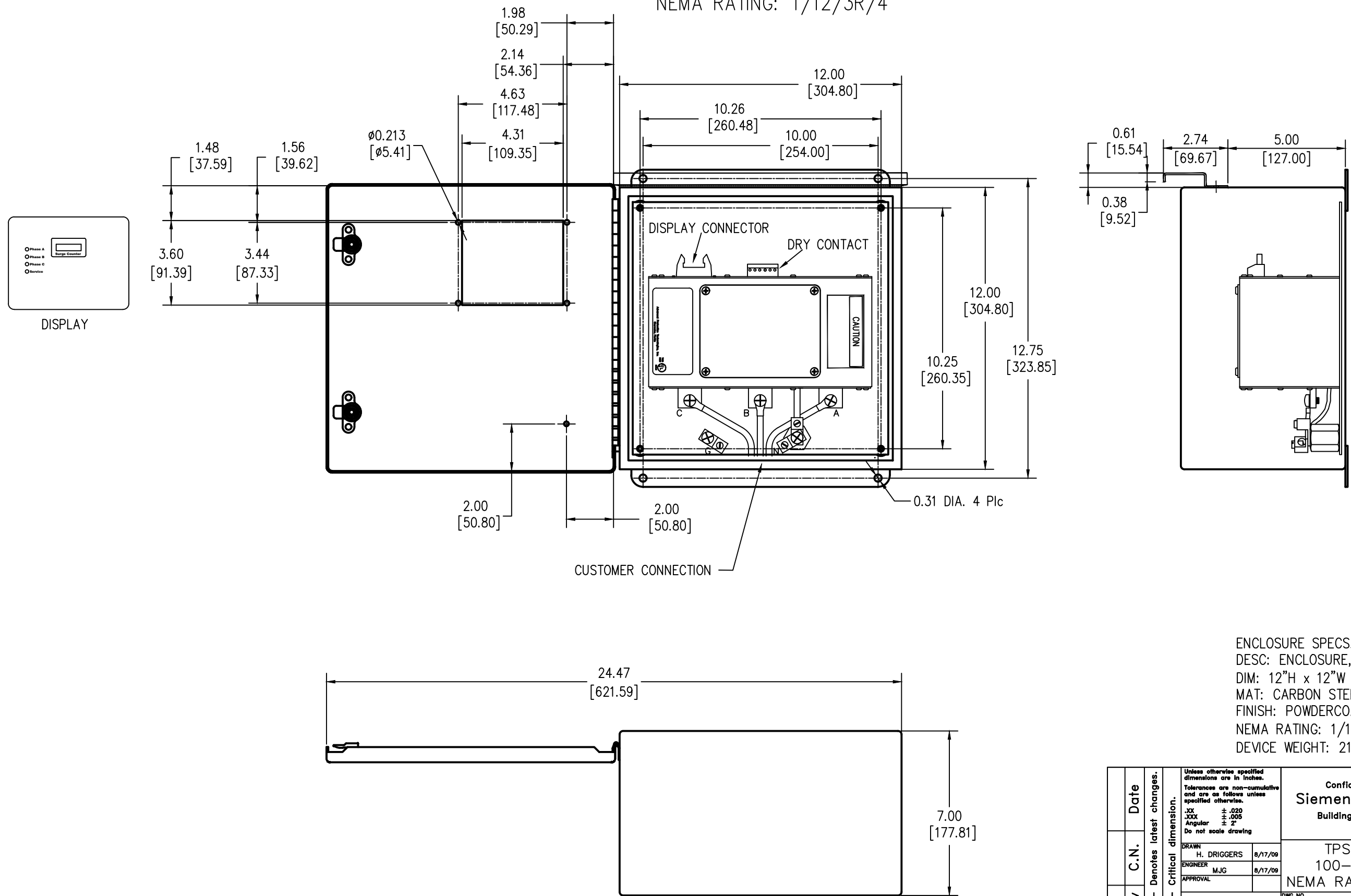


SURGE PROTECTIVE DEVICE (SPD)
WEIGHTS & DIMENSIONS
NEMA RATING: 1/12/3R/4



ENCLOSURE SPECS.
DESC: ENCLOSURE, HINGED
DIM: 12"H x 12"W x 7"D
MAT: CARBON STEEL, 16 GAUGE
FINISH: POWDERCOAT ANSI 61 GRAY
NEMA RATING: 1/12/3R/4
DEVICE WEIGHT: 21.70LBS. (9.84KG.)

Date	Unless otherwise specified dimensions are in inches. Tolerances are non-cumulative and are as follows unless specified otherwise.		Confidential - Property of Siemens Industry, Inc. Building Technologies Division
	.XX	± .020	
C.N.	.XXX	± .005	TPS3-12 SERIES 100-300K w/o DS NEMA RATING: 1/12/3R/4
	Angular	± 2'	
Rev	Do not scale drawing		DWG NO. SIE_DW_TPS31230-123R SCALE NONE SHEET 1 of 1
	1		
	△ - Denotes latest changes.	□ - Critical dimension.	
	DRAWN H. DRIGGERS 8/17/09	ENGINEER M.JC 8/17/09	