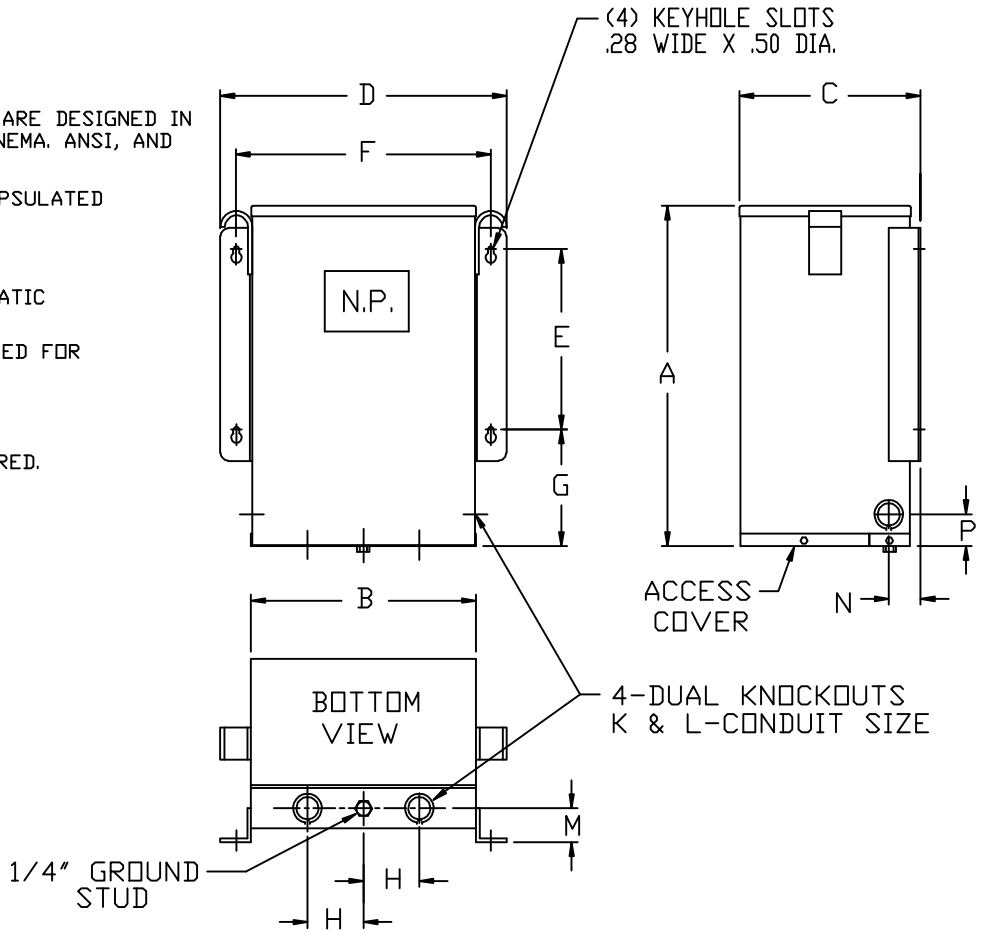


SIEMENS

DRY TYPE TRANSFORMERS

NOTES:

1. ALL UNITS ARE UL LISTED AND ARE DESIGNED IN ACCORDANCE WITH APPLICABLE NEMA, ANSI, AND IEEE STANDARDS.
2. THESE TRANSFORMERS ARE ENCAPSULATED CONSTRUCTION.
3. TRANSFORMERS ARE 135°C RISE.
4. FULL WIDTH COPPER ELECTROSTATIC SHIELD INCLUDED.
5. TRANSFORMERS ARE WALL MOUNTED FOR INDOOR / OUTDOOR USE.
6. PAINT COLOR IS ANSI #61 GRAY.
7. MOUNTING HOLES LOCATIONS, 1/4" MOUNTING HARDWARE REQUIRED.



| KVA | NET WT. LBS. ALUM. UNITS | NET WT. LBS. COPPER UNITS | DIMENSIONS IN INCHES | | | | | | | | | | | | |
|-----|--------------------------------|---------------------------------|----------------------|-------|------|-------|------|-------|------|------|------|----|------|------|------|
| | | | A | B | C | D | E | F | G | H | K | L | M | N | P |
| 3 | 82 | 90 | 13.12 | 12.25 | 8.06 | 15.12 | 5.25 | 13.62 | 5.50 | 3.00 | 3/4" | 1" | 2.00 | 2.00 | 1.75 |
| 6 | 119 | 128 | 13.12 | 12.25 | 8.06 | 15.12 | 5.25 | 13.62 | 5.50 | 3.00 | 3/4" | 1" | 2.00 | 2.00 | 1.75 |
| 9 | 160 | 240 | 15.12 | 16.12 | 9.06 | 19.00 | 8.25 | 17.50 | 5.12 | 4.00 | 3/4" | 1" | 2.00 | 2.00 | 1.75 |
| 15 | 230 | 240 | 15.12 | 16.12 | 9.06 | 19.00 | 8.25 | 17.50 | 5.12 | 4.00 | 3/4" | 1" | 2.00 | 2.00 | 1.75 |

| KVA | QTY. | CATALOG NO. | VOLTAGE | | TAPS | DRAWING |
|-----|------|-------------|---------|-----------|------|-----------------------------------|
| | | | PRIMARY | SECONDARY | | |
| | | | | | | <input type="checkbox"/> APPROVAL |
| | | | | | | <input type="checkbox"/> RECORD |
| | | | | | | <input type="checkbox"/> OTHER |

| | | |
|-------|-----------|--|
| CUST. | DWN. BY: | Siemens Industry, Inc. |
| | DATE: | |
| JOB | CHK. BY: | GENERAL PURPOSE TRANSFORMERS THREE-PHASE, 600 VOLTS CLASS, 60 HZ. |
| P.O. | DATE: | |
| TIE | APVD. BY: | DWG. NO. J-20 |
| S.O. | DATE: | |
| | | REV. D DATE 06/22/10 |