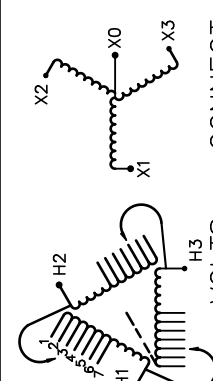





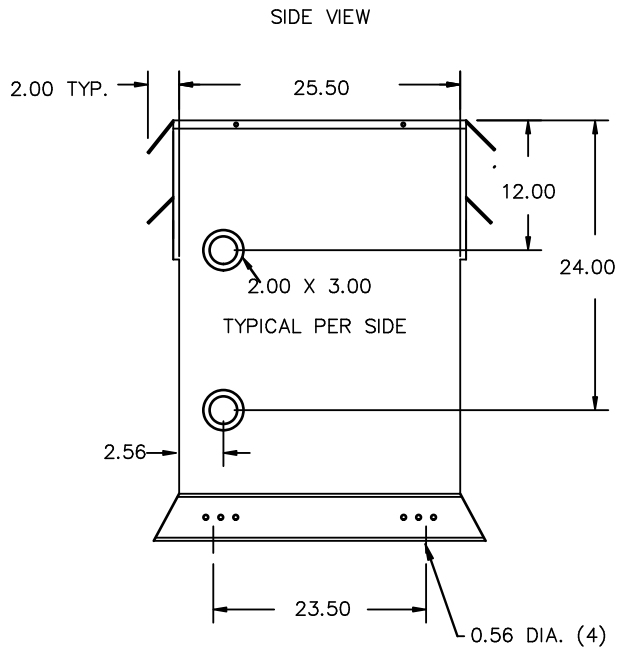
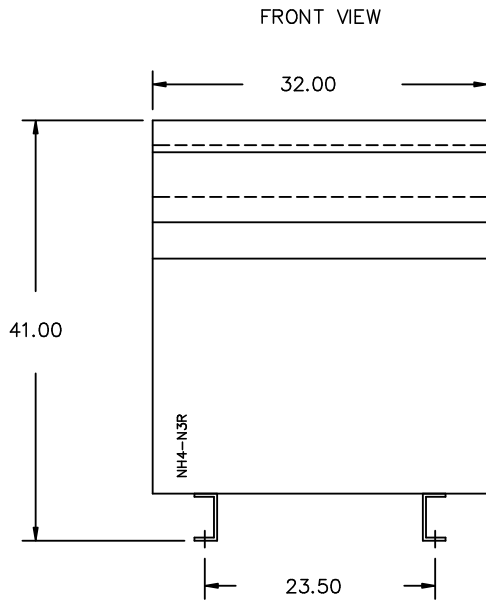
REVISION	DATE	BY	DATE	BY
		DRAWN	06/12/04	JW
		CHEK'D		
		VERIF'D		

Confidential - Property of Siemens Industry, Inc. Building Technologies Division		
CUSTOMER		
ORDER NO.	DWG. NO.	
	3F3Y112K13TP1	SH 1 OF 2

SIEMENS

CATALOG NO. 3F3Y112K13TP1 SERIAL NO. 112.5 kVA 60 Hz 3 PHASE 5.6 % IMP AT 170 °C 150 °C RISE °C AVG. AMBIENT 220 °C TEMP CLASS °C MAX. AMBIENT PRIMARY (H1 H2 H3) 480V V SECONDARY(X0 X1 X2 X3) 208Y/120V V WINDING MATERIAL AL ENCLOSURE TYPE NEMA-3R WEIGHT 800 LBS ENERGY EFFICIENCY NEMA TP 1-2002	 VOLTS 504 492 480 468 456 444 432 CONNECT 1 2 3 4 5 6 7	<div style="display: flex; justify-content: space-between;"> <div style="text-align: center;">  LISTED DRY TYPE TRANSFORMER 7705 E112313 </div> <div style="text-align: center;">  LR 3902 </div> </div> <div style="display: flex; justify-content: space-between;"> <div style="text-align: center;">  VERIFIED Energy Performance Performance Énergie Énergie VERIFIE </div> <div style="text-align: center;"> TYPE K </div> </div>
SPACINGS BETWEEN ENCLOSURE AND ANY ADJACENT WALL SHALL BE A MINIMUM OF 6 INCHES ELECTROSTATIC SHIELD SUITABLE FOR NON-SINUSOIDAL CURRENT LOAD WITH A K-FACTOR NOT TO EXCEED 13 SUITABLE FOR INDOOR OR OUTDOOR LOCATIONS BEFORE HANDLING, INSTALLING AND OPERATING, SEE INSTRUCTION MANUAL NEMA Class ANN Dry Type Transformer Siemens Industry, Inc. Norcross, GA dsu0082e		





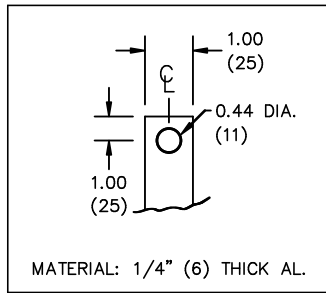
All Dimensions in inches

ENCLOSURE COLOR :ANSI 61 GREY – OUTDOOR

H.V.1. TERMINAL DETAIL

L.V.1. TERMINAL DETAIL

MECHANICAL TYPE LUGS INCLUDED
SUITABLE FOR 250MCM-6 CU/AL
CONDUCTORS
1 CONDUCTOR PER PHASE



CUSTOMER NOTES:

- HV1 TERMINATED AT TOP FRONT
- LV1 TERMINATED AT COIL FACE

Confidential – Property of
Siemens Industry, Inc.
Building Technologies Division

REVISION	DATE	BY	DATE	BY
			06/12/04	JW

CUSTOMER	
ORDER NO.	DWG. NO.
	3F3Y112K13TP1