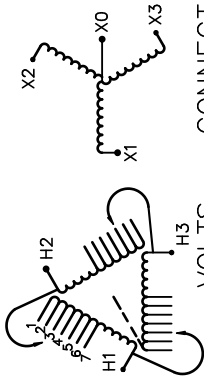





REVISION	DATE	BY	DATE	BY
		DRAWN	03/09/09	VG
		CHEK'D		
		VERIF'D		

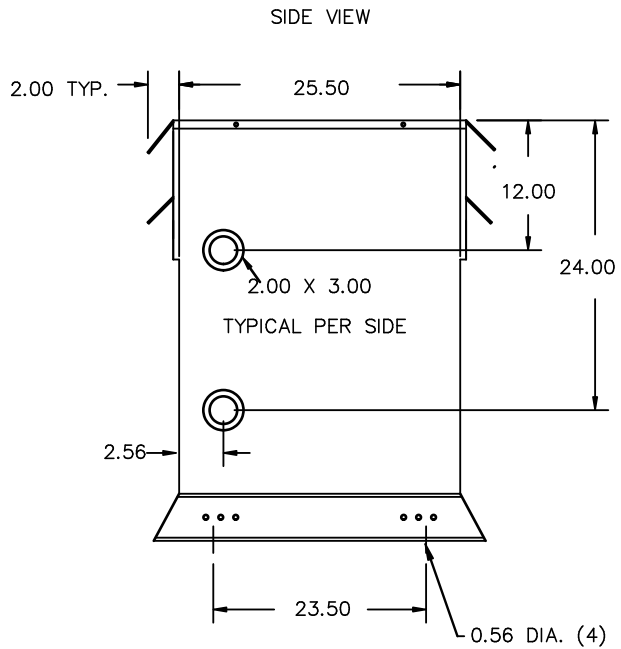
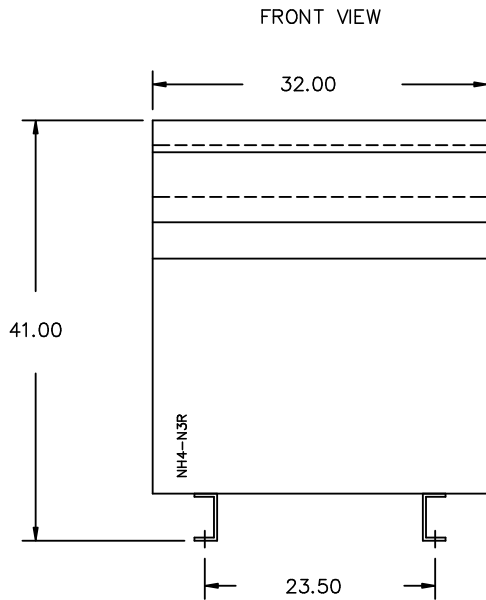
Confidential - Property of Siemens Industry, Inc. Building Technologies Division		
CUSTOMER		
ORDER NO.	DWG. NO.	
	3F3Y112FTP1	SH 1 OF 2

SIEMENS

CATALOG NO. 3F3Y112FTP1 SERIAL NO. 112.5 kVA 60 Hz 3 PHASE 5.5 % IMP AT 135 °C 115 °C RISE °C AVG. AMBIENT 220 °C TEMP CLASS °C MAX. AMBIENT PRIMARY (H1 H2 H3) 480V V SECONDARY(X0 X1 X2 X3) 208Y/120V V WINDING MATERIAL AL ENCLOSURE TYPE NEMA-3R WEIGHT 800 LBS ENERGY EFFICIENCY NEMA TP 1-2002	 <p style="text-align: center;">VOLTS CONNECT</p> <table style="margin-left: auto; margin-right: auto;"> <tr><td>504</td><td>1</td></tr> <tr><td>492</td><td>2</td></tr> <tr><td>480</td><td>3</td></tr> <tr><td>468</td><td>4</td></tr> <tr><td>456</td><td>5</td></tr> <tr><td>444</td><td>6</td></tr> <tr><td>432</td><td>7</td></tr> </table>	504	1	492	2	480	3	468	4	456	5	444	6	432	7	 <p style="text-align: center;">DRY TYPE TRANSFORMER 77105 E112313 LISTED</p> <p style="text-align: center;">TYPE K</p>  <p style="text-align: center;">LR 3902</p> <p style="text-align: right; font-size: small;">dsu0082e</p>
504	1															
492	2															
480	3															
468	4															
456	5															
444	6															
432	7															
 <p style="text-align: center;">VERIFIED Energy Performance Certification Energetique VERIFIE</p>																
<p style="font-size: small;">SPACINGS BETWEEN ENCLOSURE AND ANY ADJACENT WALL SHALL BE A MINIMUM OF 6 INCHES</p> <p style="font-size: small;">SUITABLE FOR INDOOR OR OUTDOOR LOCATIONS BEFORE HANDLING, INSTALLING AND OPERATING, SEE INSTRUCTION MANUAL</p> <p style="font-size: small;">NEMA Class ANN Dry Type Transformer Siemens Industry, Inc. Norcross, GA</p>																



3F3Y112FTP1



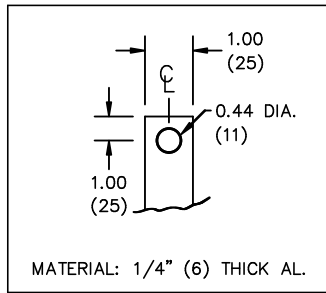
All Dimensions in inches

ENCLOSURE COLOR :ANSI 61 GREY – OUTDOOR

H.V.1. TERMINAL DETAIL

L.V.1. TERMINAL DETAIL

MECHANICAL TYPE LUGS INCLUDED
SUITABLE FOR 250MCM-6 CU/AL
CONDUCTORS
1 CONDUCTOR PER PHASE



CUSTOMER NOTES:

- HV1 TERMINATED AT TOP FRONT
- LV1 TERMINATED AT COIL FACE

Confidential – Property of
Siemens Industry, Inc.
Building Technologies Division

REVISION	DATE	BY	DATE	BY
			03/09/09	VG

CUSTOMER	
ORDER NO.	DWG. NO.
	3F3Y112FTP1
SH 2 OF 2	

0.3 rbhatia 2011/05/27 10:27