

SIEMENS

CATALOG NO. 3F3Y300ESCLN3D16CC

SERIAL NO.

SERIES H

300 kVA 60 Hz 3 PHASE

3.9 % IMP AT 170 °C

150 °C RISE 30 °C AVG. AMBIENT

220 °C TEMP CLASS 40 °C MAX. AMBIENT

PRIMARY (H1 H2 H3) 480V V 10 kV BIL

SECONDARY(X0 X1 X2 X3) 208Y/120V V 10 kV BIL

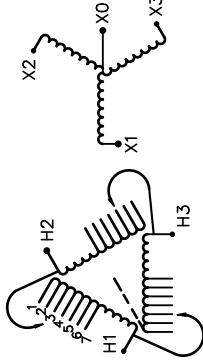
WINDING MATERIAL CU

ENCLOSURE TYPE - WEIGHT 1700 LBS

ENERGY EFFICIENCY EXCEEDS CSA DOE 10 CFR PART 431:2016

ELECTROSTATIC SHIELD

SOUND LEVEL IS 3 DB LOWER THAN NEMA ST20 REQUIREMENTS



VOLTS	CONNECT
504	1
492	2
480	3
468	4
456	5
444	6
432	7

TYPE J



SEISMIC QUALIFICATIONS, FLOOR MOUNT ONLY
IBC 2012/ASCE 7-10
SDS<=2.0g Z/h=1 Ip=1.5

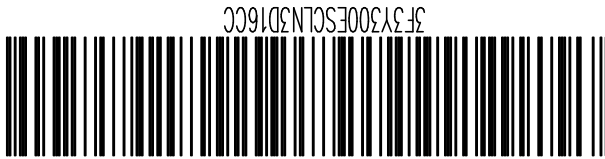
NEMA Class AN Dry Type Transformer

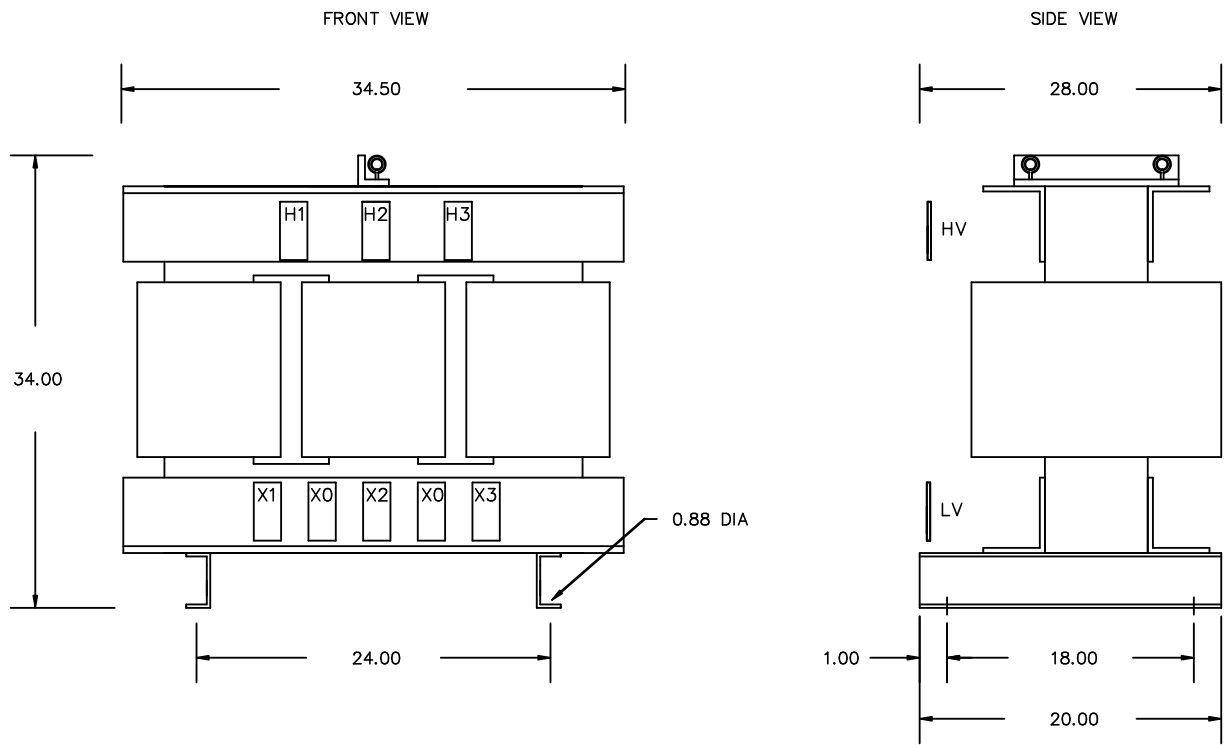
Siemens Industry, Inc. Norcross, GA ds00086

Confidential - Property of
Siemens Industry, Inc.

REVISION	DATE	BY	DATE	BY
		DRAWN	16/01/21	PP
		CHEK'D		
		VERIF'D		

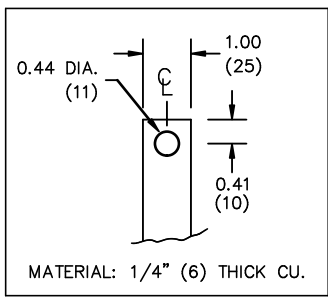
CUSTOMER	
ORDER NO.	DWG. NO. 3F3Y300ESCLN3D16CC SH 1 OF 2



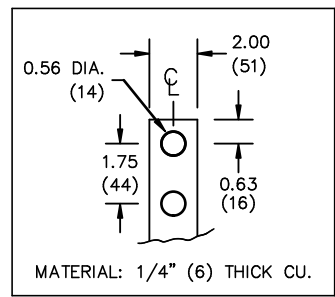


All Dimensions in inches

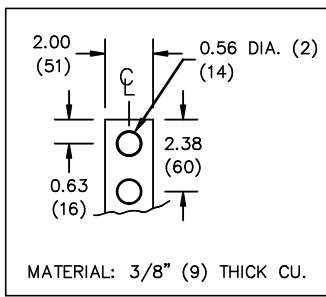
H.V.1. TERMINAL DETAIL



L.V.1. TERMINAL DETAIL



X0 TERMINAL DETAIL



CUSTOMER NOTES:

- HV1 TERMINATED AT TOP FRONT
- LV1 TERMINATED AT BOTTOM FRONT
- X0 TERMINATED AT BOTTOM FRONT
- DIMENSIONS ARE APPROXIMATE
- X0 HAS QTY 2 PADS. DIVIDE CABLES EVENLY ON BOTH PADS

Confidential – Property of
Siemens Industry, Inc.

REVISION	DATE	BY	DATE	BY	CUSTOMER
			DRAWN	16/01/21	PP
			CHEK'D		
			VERIF'D		
					ORDER NO.
					DWG. NO.
					3F3Y300ESCLN3D16CC SH 2 OF 2