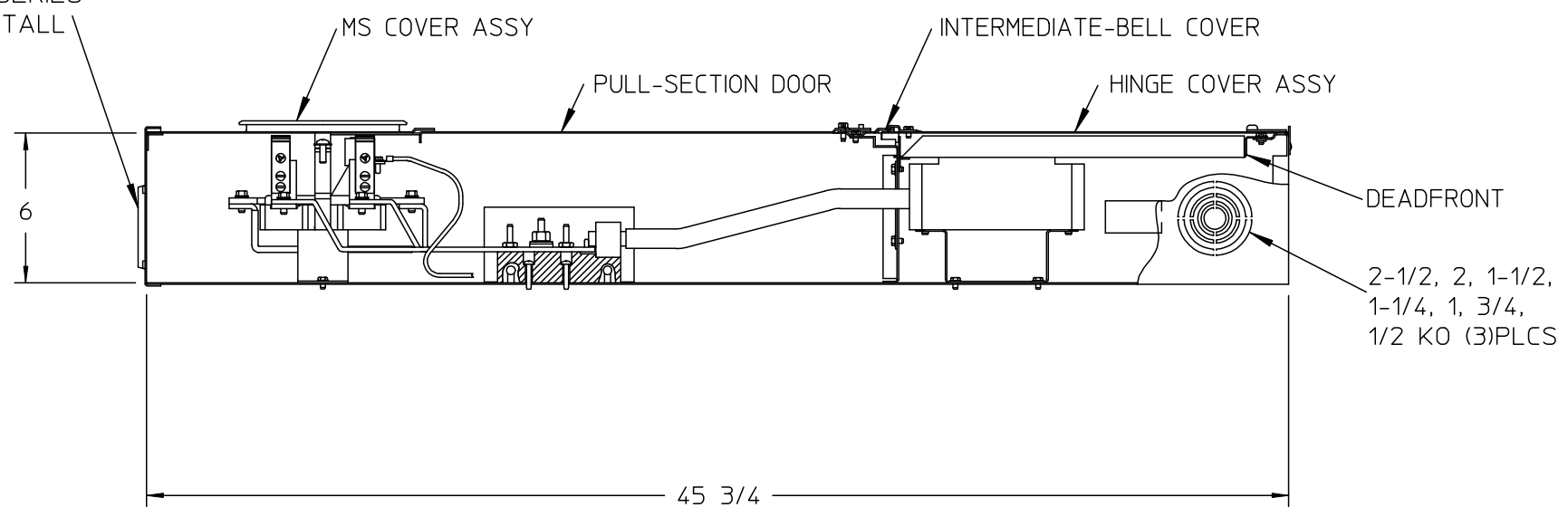


3, 2-1/2, 2, 1-1/2,
1-1/4, 1 KO (3)PLCS
5/16 DIA KO
(12)PLACES

1/2
KO

SEE NOTE 4

SIEMENS "HC" SERIES
HUB OPENING, TALL



- NOTES:
 1) FINISH: GRAY
 2) CABINET: 16 GA GALV STEEL
 3) 200 AMPS, 240 VAC, 3 PHASE, 4 WIRE
 4) SEALING RING, HUB COVER PLATE ASY,
 & NEMA INSTR SHEET PLACED INSIDE OF
 BOX BEFORE DEADFRONT IS SECURED.
 5) UL LISTED - FILE E27485

LANDIS & GYR CATALOG NO: MM0303F3200EY
 FEED: TOP ONLY
 BREAKER LOCATION: BOTTOM SECTION
 TYPE 3R ENCLOSURE (RAINPROOF).

SUITABLE FOR USE AS SERVICE EQUIPMENT WHEN NOT MORE THAN SIX MAIN DISCONNECTING MEANS ARE PROVIDED. WHEN USED AS SERVICE EQUIPMENT, BOND NEUTRAL AND APPLY "SERVICE DISCONNECT" LABEL NEAR THE DISCONNECT HANDLE.

DEVICE RATING: 200 AMPS MAXIMUM; 208Y/120 OR 240/120 VAC DELTA*, THREE PHASE, FOUR WIRE.
 METER SOCKET RATING: 200 AMPS CONTINUOUS.
 *CONNECT HIGH PHASE (208V TO GROUND) TO RIGHT HAND TEST BLOCK.

THIS DEVICE HAS A MAXIMUM SHORT CIRCUIT CURRENT RATING OF 100,000 RMS SYMMETRICAL AMPERES AT 240 VAC MAXIMUM. (Watt-Hour meter not included in short circuit current rating), WHEN 300 VOLT CLASS FUSES ARE INSTALLED. REPLACEMENT PULLOUT SWITCH MUST BE OF SAME TYPE, RATING & MANUFACTURER.

TERMINAL TIGHTENING TORQUES, LB-IN.

WIRE SIZE, kcmil or AWG	LINE, LOAD & NEUTRAL	SERVICE GROUND	EQUIPMENT GROUND	
			LARGE HOLE	SMALL HOLE
250-2/0	250	---	---	---
1/0 - 3	---	50	45	---
4	---	45	45	---
6	---	45	45	35
8	---	40	40	25
10 - 12	---	35	35	20

TORQUE TEST BLOCK CIRCUIT CLOSING (DISCONNECT) NUT (5/8" ACROSS FLATS) TO 50 LB-IN.

PULLOUT SWITCH LOAD: SIZE WIRE IN ACCORDANCE WITH DEVICE RATING AND WIRE BENDING SPACE. SEE MARKINGS ON PULLOUT FOR TORQUE REQUIREMENTS.

TERMINALS SUITABLE FOR USE WITH 60/75°C, AL/CU INSULATED WIRE

FOR EQUIPMENT GROUND BAR ORDER ECLX SERIES, IF HUB IS REQUIRED SELECT FROM "HC" LIST BELOW, OR USE ECHCRXA ADAPTER WITH HUBS SELECTED FROM "RX" LIST BELOW.

HC TYPE HUBS		RX TYPE HUBS	
SIZE	CAT. NO.	SIZE	CAT. NO.
2"	ECHC200	1-1/2"	EC38598
2-1/2"	ECHC250	2"	EC38599
3"	ECHC300	2-1/2"	EC38600

UNLESS OTHERWISE SPECIFIED
 DIMENSIONS ARE IN INCHES
 TOLERANCES:
 .XX
 .XXX
 HOLE DIAMETER
 ANGULAR
 UNDIMENSIONED 90° ANGLES

-CONFIDENTIAL-PROPERTY OF
 Siemens Energy & Automation, Inc.
 Residential Products Division

SKT 200A 7T (2) HO EUSERC

DWN	CJD	DATE 10-23-07	SIZE B	ISSUE RELEASE NO.	DWG NO.	MM0303F3200EY	REV
CHK		DATE					