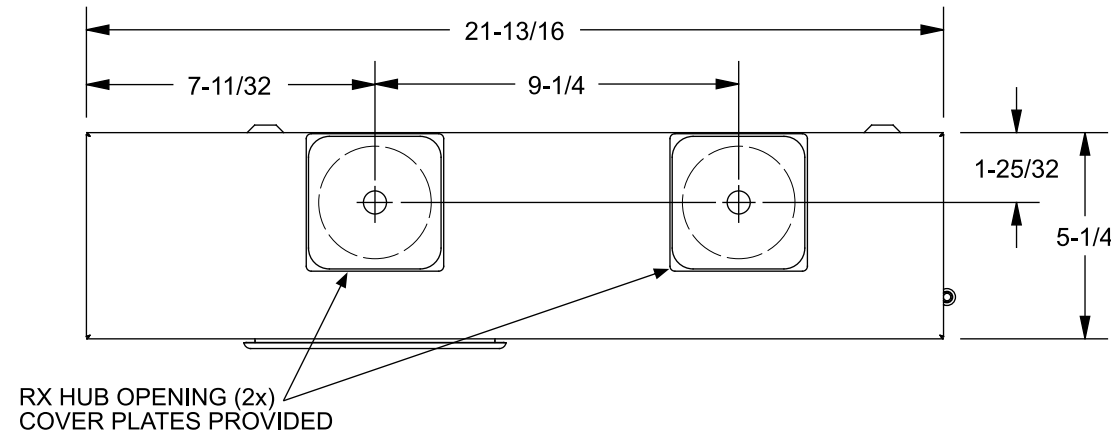


# Catalog Number: MM0202S1200H

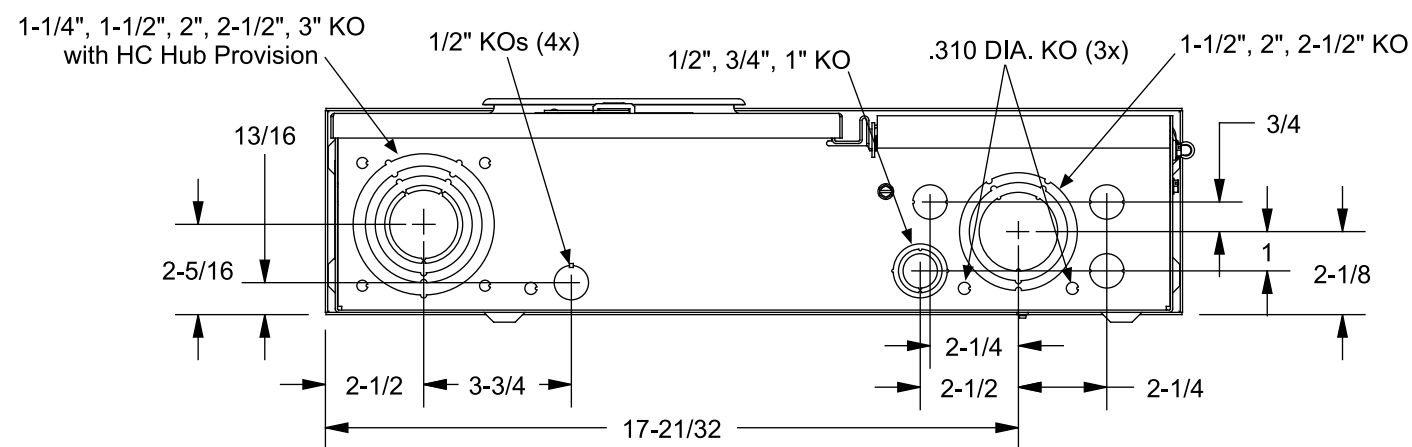
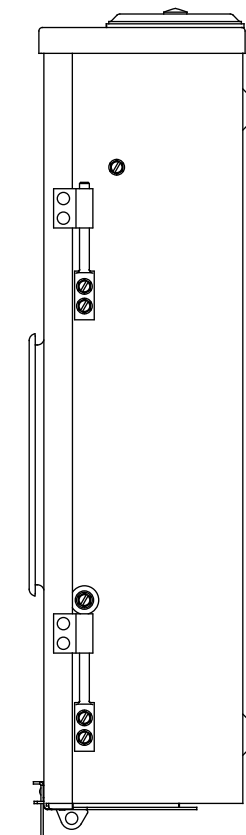
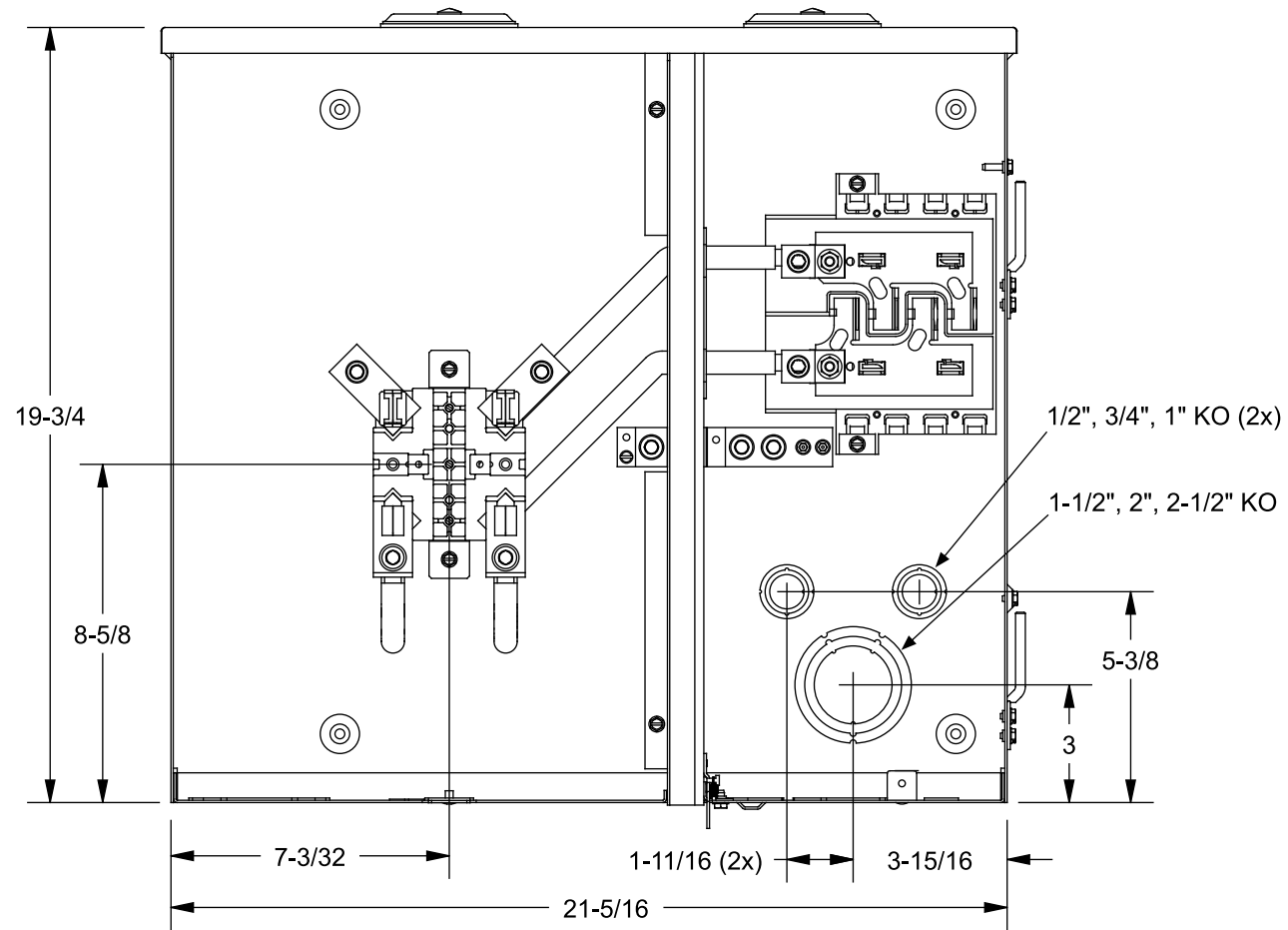
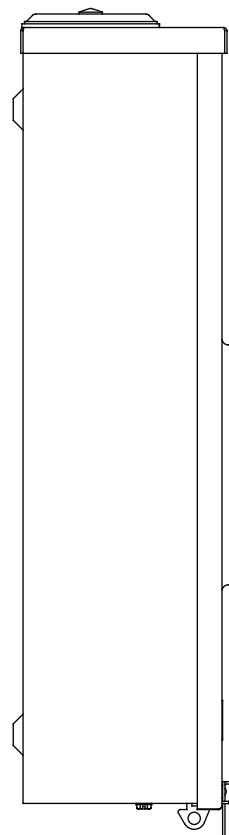
## Features and Ratings

- Outdoor Enclosure (NEMA Type 3R)
- For Photovoltaic or Alternate Energy applications (Use 60A Max. Breaker Types QP, QPH, LQ, MP-T, MP-HT\*)
- Ring Type Meter Cover
- Field Installed Main Breaker (Types QN, QNH, QP, QPH, LN, LQ, MD-T, MD-HT, MP-T, MP-HT\*)
- 200A Max, 1 Phase, 3 Wire, 120/240V~, 120/208V~
- 22,000 AIC Max. Rated\*
- Meter Socket Rating: 200A Continuous
- Overhead or Underground Service Entrance
- Surface Mounting

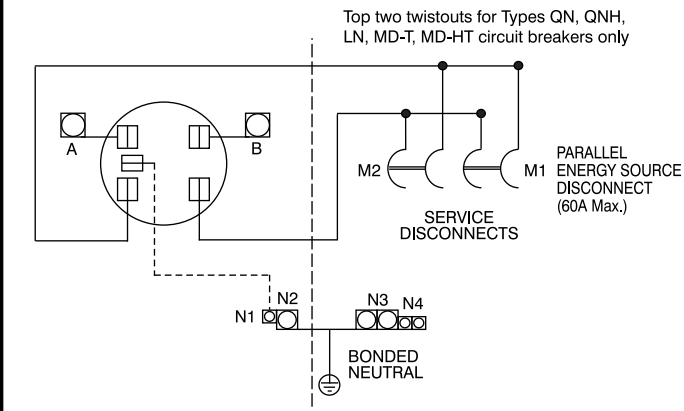
\*See Wiring Diagram for Details



View Shown Without Cover, Door, Deadfront



## Schematic



## Wire Sizes and Torques

(Refer to Schematic)

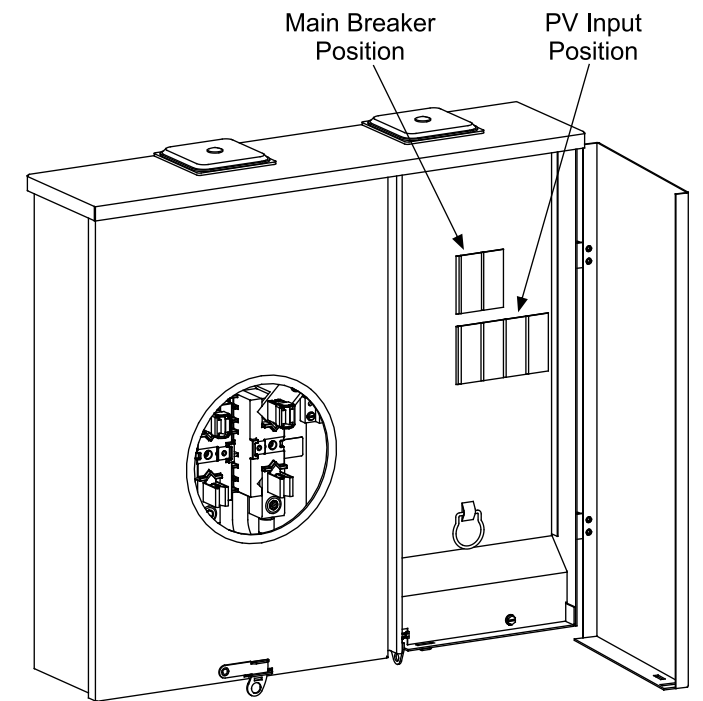
| Terminal | Wire Size      | Torque      |
|----------|----------------|-------------|
| A, B     | 250kcmil - #6  | 275 lb-in   |
| N1       | #2 - #3        | 50 lb. in.  |
|          | #4 - #6        | 45 lb. in.  |
|          | #8             | 40 lb. in.  |
|          | #10 - #14      | 35 lb. in.  |
| N2       | 250 kcmil - #6 | 275 lb. in. |
| N3       | 250 kcmil - #4 | 275 lb. in. |
| N4       | 1/0 - #14      | 120 lb. in. |

## Accessories

Accessories:  
Filler Plate - ECQF3  
5" Jaw Assembly - EMC5J

Hubs: Type RX Catalog Numbers (Top Endwall)

| Trade size (inches) | Siemens Cat. No. | Talon Cat. No. |
|---------------------|------------------|----------------|
| 1 1/4"              | EC38597          | H38597-2       |
| 1 1/2"              | EC38598          | H38598-2       |
| 2"                  | EC38599          | H38599-2       |
| 2 1/2"              | EC38600          | H38600-2       |



© 2012 Copyright Siemens Industry, Inc.

**SIEMENS**  
Siemens Industry, Inc.

## SolarReady™ Meter Main

Description:  
**200A, OH/UG, 4 Jaw, Ring Type**

KAM 4/30/12 Fam D DO NOT SCALE Dwg. No. **MM0202S1200H**