

Catalog Numbers, Features and Ratings

WTB11200CU	1-PHASE
WTB31200CU	3-PHASE

- MODULE RATING: 1200 AMPS MAX, 240V AC MAX.
- 100,000 AIC RATING MAX.
- ADDED MOUNTING RAILS AND BRACKETS FOR SECURE MOUNTING.
- FOR OVERHEAD OR UNDERGROUND SERVICE.
- TYPE 3R OUTDOOR ENCLOSURE.

FOR USE WITH:

Module Description	Siemens Series No.	Murray Series No.
Main Breakers	(W)MC, WB, WEB	DB W
Switches	WMP, WMS, WS, WES	DPT W, DT W
Tap/Terminal Boxes	WMTB, WTB, WET	DTB W
Pull Boxes	WMMB, WPB, WAPB	DPB W
Meter Modules	WMM, WxMM, WMT, WML, WMK	DG W, DC W, DL W
Extension Box	WMEX	DS
Bussed Elbow	BE	DL

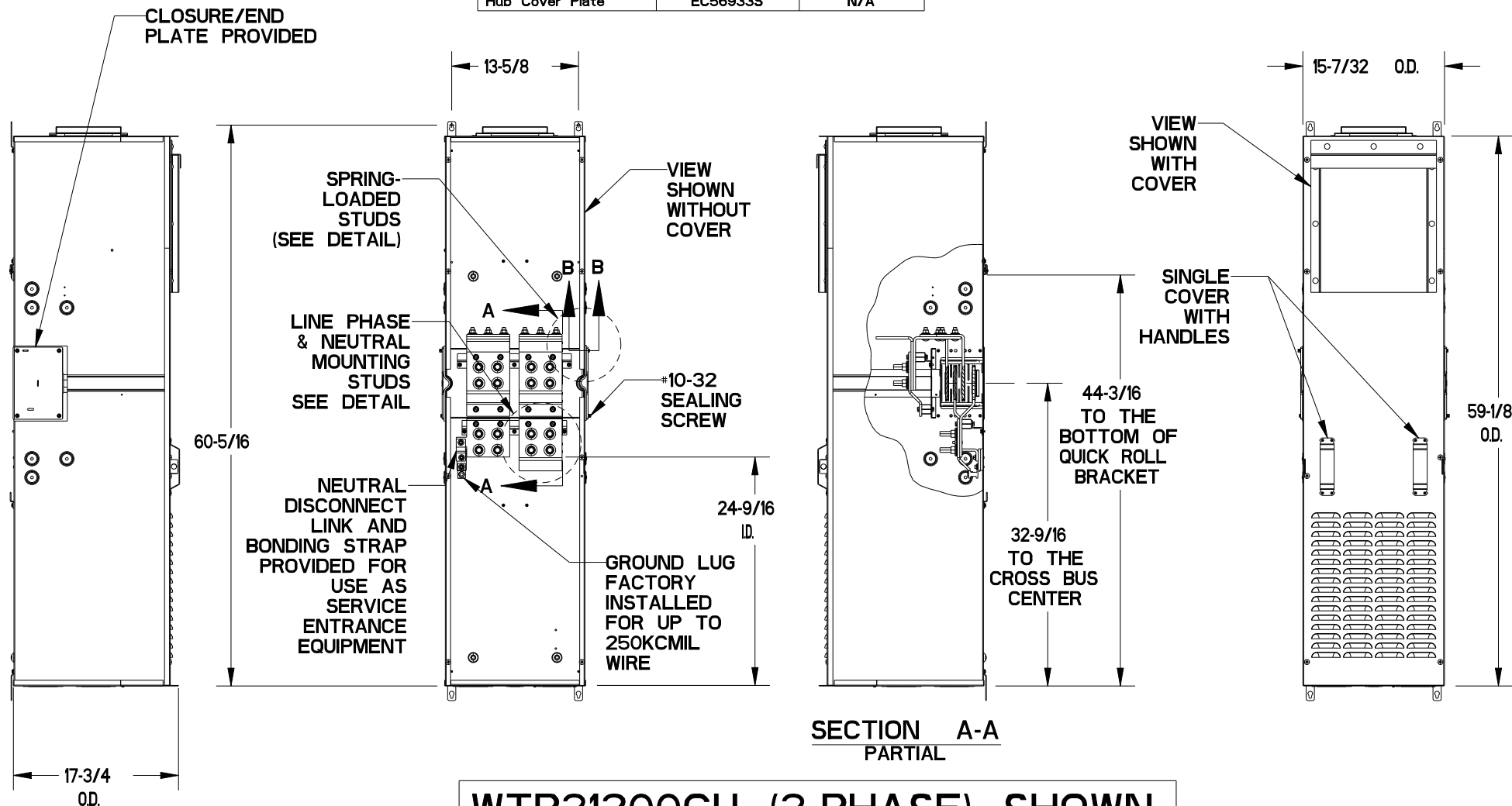
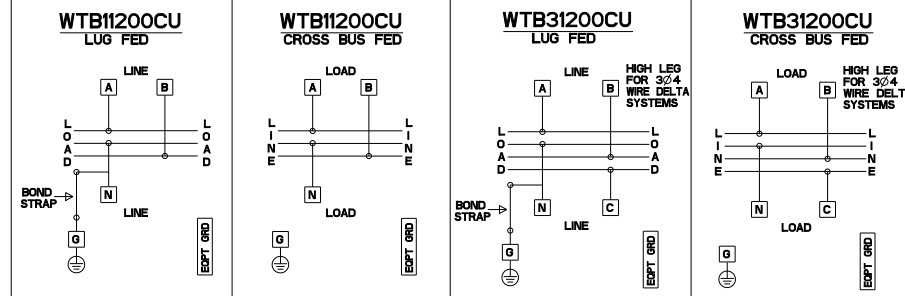
Siemens Accessories	Catalog Number	Req'd Torque
Single Bolt Joint (1ph)	QC1 or SBJ1	400-480 LB-IN [35-40 FT-LBS]
Single Bolt Joint (3ph)	QC4 or SBJ4	
GND Bar Kit	ECLX069M	N/A
Hub Cover Plate	EC56933S	N/A

Lugs for Phase and Neutral Connections (not supplied)

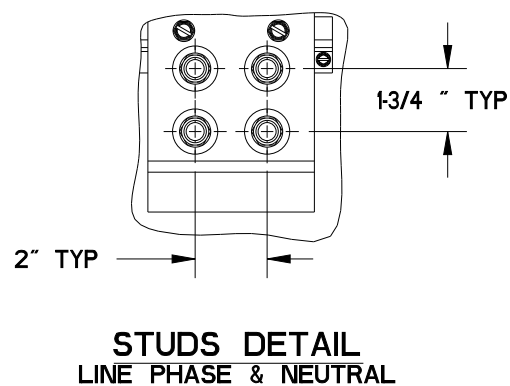
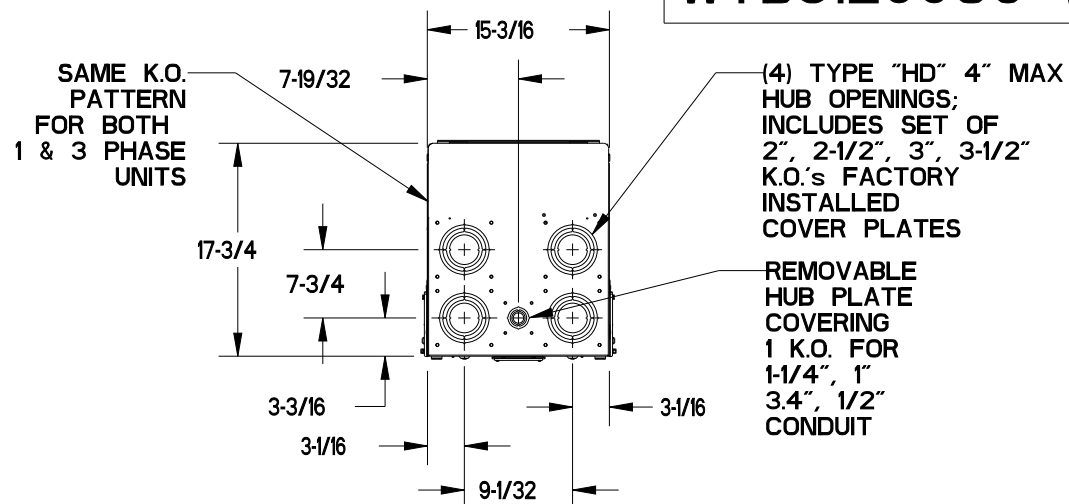
NEMA Lug ①	MFG	Wire Range	Type	No. Wires per phase	Torque (lb-in.)
LK13750N2	SIEMENS	300-750 KCMIL	MECHANICAL	3	500 ②
LK33750N2	SIEMENS	300-750 KCMIL	MECHANICAL	3	500 ②
LK14500N2	SIEMENS	1/0-500 KCMIL	MECHANICAL	4	500
2ACL-500	ILSCO	500 KCMIL	COMPRESSION	4	N/A ③
2ACL-750	ILSCO	750 KCMIL	COMPRESSION	3	

- ① Order one mechanical lug kit for mains and neutral. Contact Lug manufacturer for compression lug quantities supplied for each kit.
- ② Kit contains more than one lug type. Reference kit instruction sheet for the actual torque value for each lug kit.
- ③ See lug manufacturer's instruction sheet supplied with the connector for tool, die and number of crimps.

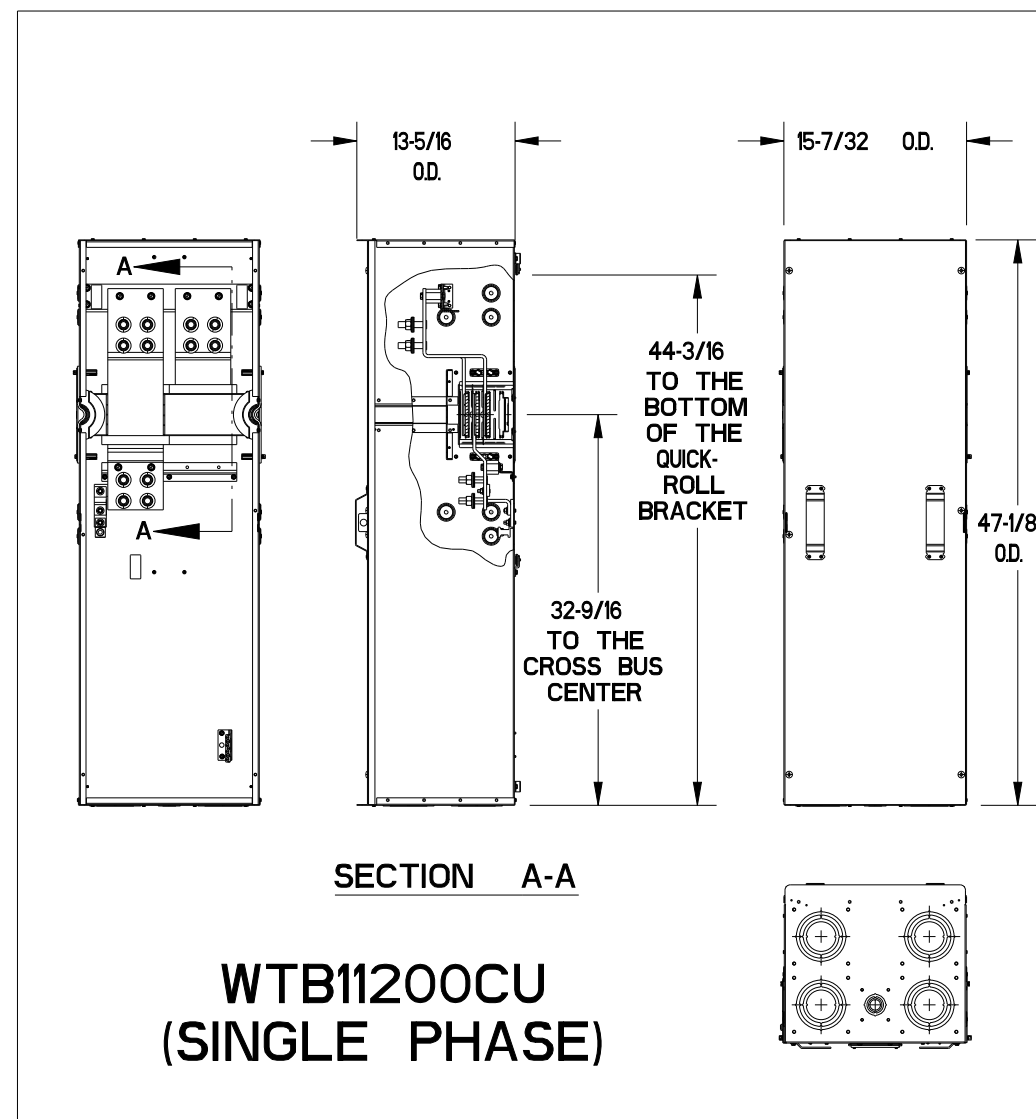
1200A Standard Tap Box Schematics



WTB31200CU (3-PHASE) SHOWN



SECTION B-B THRU SPRING LOADED STUDS SCALE 3:8



WTB11200CU (SINGLE PHASE)

Siemens Industry, Inc. Building Technologies Division

PowerMod™ Tap Boxes

CATALOG NO.: WTB11200CU and WTB31200CU Standard Service Entrance Tap Boxes

SIZE B	DWG. NO. 1200A STD SE TAP-BXS
DWN: JKH	DATE: 04/01/10 DO NOT SCALE DRAWING SHEET 1 OF 1