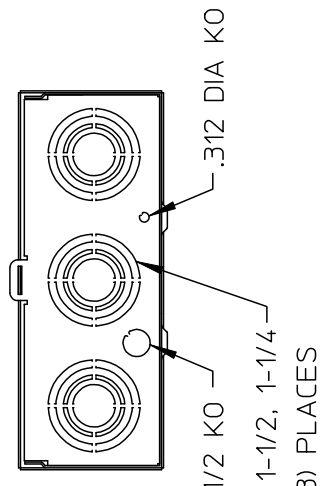


NOTES:

1. PEDESTAL IS FABRICATED FROM 14 GAUGE GALVANIZED STEEL
2. PANELBOARD ENCLOSURE IS FABRICATED FROM 16 GAUGE GALVANIZED STEEL
3. PAINT: GRAY
4. BREAKER COMPARTMENT COVER IS HINGED AT TOP AND LOCKS INTO OPEN POSITION
5. 120/240 VAC, 200 AMP, 1 PHASE, 3 WIRE
6. LOAD TERMINALS ARE RATED FOR 60° C OR 75° C CONDUCTOR
7. SIEMENS ACCEPTABLE BREAKER TYPES:  
15-100A "QP"
8. ORDER MPEXT2 FOR DIRECT BURIAL KIT.  
ORDER MPFLANGE2 FOR PAD MOUNTING KIT.



UNLESS OTHERWISE SPECIFIED DIMENSIONS ARE IN INCHES

TOLERANCES:  
 .XX  
 .XXX  
 HOLE DIAMETER  
 ANGULAR  
 UNDIMENSIONED 90° ANGLES

DWN	KP	DATE	4/24/14
CHK		DATE	
APVD		DATE	

-CONFIDENTIAL-PROPERTY OF Siemens Industry Inc. Building technologies division			
2 SKT/BKR/PED 200A 1P			
SIZE	ISSUE RELEASE NO.	DWG NO.	REV
B		MP0406B1200RB2	
SCALE		DO NOT SCALE DRAWING	SHEET 1 OF 1