

## Installation Instructions

	<b>⚠ DANGER</b>
	<b>Hazardous voltage. Will cause death or serious injury.</b>

Turn off and lock out  
power to enclosure before  
installing device.

**Cat. No.'s**

- DKR2
- DKR3
- DKL2
- DKL3

	<b>SAFETY INSTRUCTIONS</b>
---	----------------------------

### GENERAL INFORMATION

Cat. Nos. DKR2, DKR3, DKL2, and DKL3 are for use in standard or custom enclosures. Door latch post assemblies and door catch are supplied with these kits. The user must supply the latch bar.

Enclosures with an overall height under 40 inches require a two-point door latch mechanism. Three-point latch mechanisms are used when overall height is 40 inches or greater.

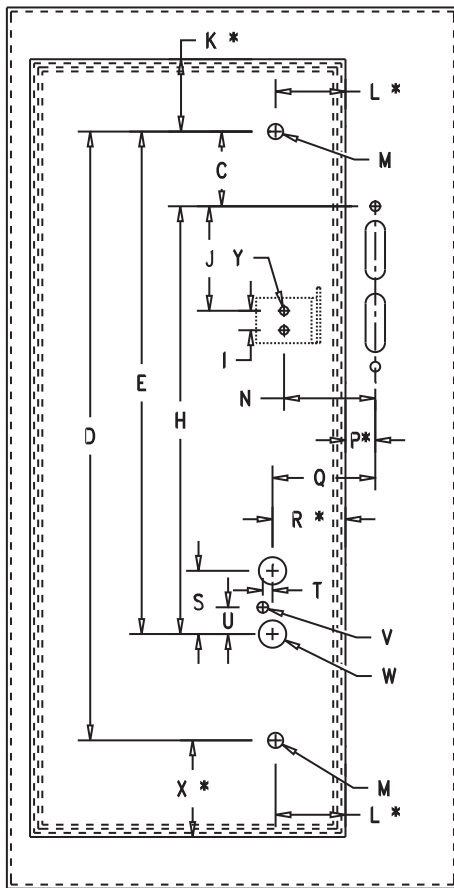
The door latch mechanism can be used with or without the type FHOH Flange Mount Handle Operator. These instructions apply when the door latch mechanism is mounted adjacent to and interlocks with the Flange Mount Handle Operator. The door handle can be padlocked to prevent unauthorized entry into the enclosure.

Drawings in this instruction sheet are for a right-hand flange installation. Drawings for a left-hand flange installation are the mirror images of the drawings in this instruction sheet. For left-hand flange installation substitute “clockwise” for “counterclockwise” and “counterclockwise” for “clockwise.”

All dimensions are in inches.



# Installation Instructions



\* OUTSIDE DIMENSION

C	1 59/64 Min.
H	9 3/8 Min.
I	1/2
J	2 11/16
K	1 55/64
L	1 51/64
M	25/64 Dia.
N	2 19/64
P	23/32
Q	2 19/32
R	1 7/8
S	1 5/8
T	1/4
U	11/16
V	9/32 Dia.
W	45/64 Dia.
X	2 31/64
Y	7/32 Dia.

**NOTE: U DIM. is 1-5/16 for DKL2 and DKL3.**

Figure 1



# Installation Instructions

## INSTALLATION

1. Turn OFF and lock out power to enclosure before installing device.
2. Prepare mounting holes in enclosure door observing minimum dimensions. See Figure 1. See TYPE FHOH handle operator instructions for flange drilling pattern.

NOTE: D and E dimensions are determined by the height of the enclosure.

Refer to Figure 2 for the following steps.

3. Place gasket on handle plate and attach handle plate to enclosure door with two thin wall hex nuts. Tighten nuts.
4. Insert lockout screw and handle through holes in handle plate.
5. Install latch bar post assembly (screw, sealing washer, flat washer, and special hex nut) and door catch if required. Tighten special hex nut if used.

If latch bar is not supplied with enclosure, then user must supply 1/4" by 1/2" steel bar. See Figure 3.

NOTE: D and E dimensions are determined by the height of the enclosure.

6. Attach top, bottom, and latch plate rollers to latch bar with retaining pins and E-Rings.  
NOTE: Two-point latch does not have bottom roller.
7. Fasten top and bottom rollers to enclosure door with locking type flange nuts. Tighten nuts then loosen 1/8 turn to allow movement of roller assemblies.

8. Place bottom spring over bottom thin wall hex nut inside enclosure door.
9. Turn handle 1/4 turn clockwise (looking from inside enclosure door) and attach latch plate roller to handle shaft while inserting bent leg of spring into hole in latch plate. Fasten with locking-type flange nut. Tighten nut then loosen 1/8 turn to allow movement of roller assemblies. See Figure 2.

NOTE: Straight leg of spring must rest against pin on handle plate.

10. Place top spring over top thin wall hex nut inside enclosure door. See Figure 2.
11. Attach lockout plate to lockout screw with locking type flange nut. Tighten flange nut. Insert bent leg of spring into hole in lockout plate. Place vinyl cap over end of spring as shown in Figure 2.

NOTE: Straight leg of spring must rest against pin on handle plate. See Figure 2.

12. Attach interlock lever to latch bar with two #10 lockwashers and 10-24 screws.

NOTE: Position of lever is dependent on enclosure depth. See Figure 3.

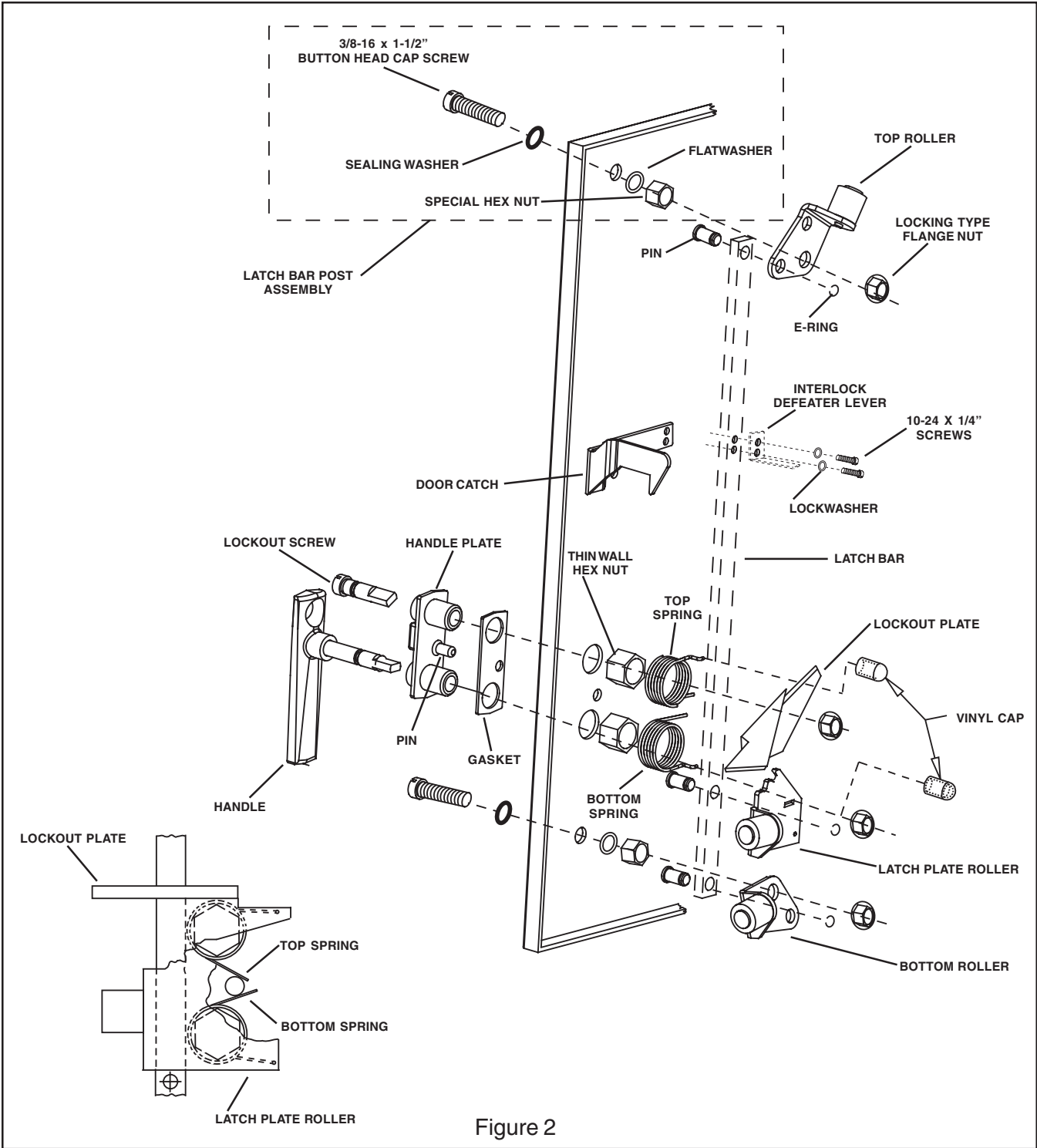
13. Weld or rivet door catch to enclosure door. User must supply mounting hardware.
14. Attach door latch label to the enclosure door next to the door handle.

**⚠ DANGER**

Hazardous voltage.  
Will cause death or serious injury.

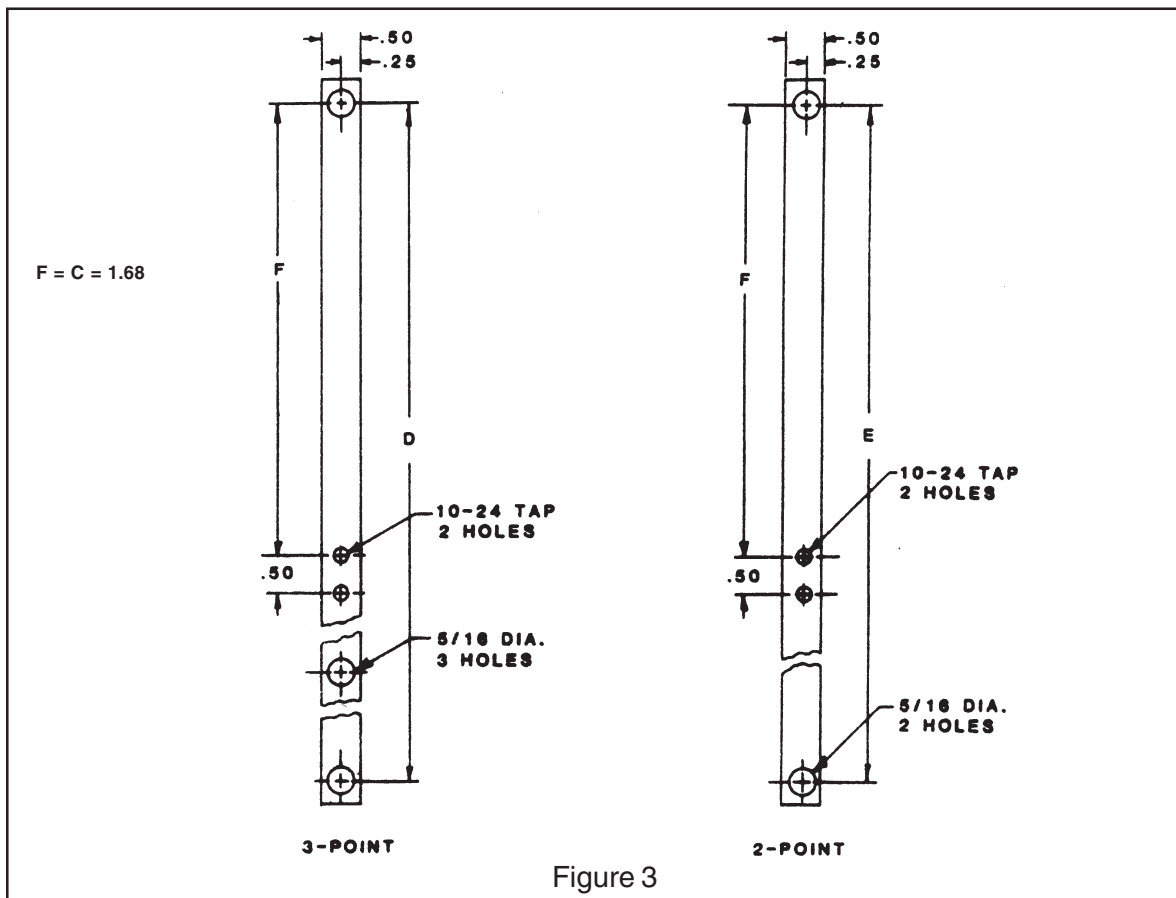
Turn off and lock out power to enclosure before installing device.

## Installation Instructions





# Installation Instructions



## ADJUSTMENTS

When used in conjunction with the FHOH Flange Mount Handle Operator, check as follows:

1. With door initially in open (unlatched) position close the door but do not turn the door handle. The lockout plate should latch the door partially closed.
2. Turn the handle clockwise to stop. This will engage the rollers against the enclosure flange, securing the door fully closed.
3. Check that the circuit breaker can be turned "On." If breaker will not turn "On," adjust the

interlock defeater lever (Figure 2) downward to engage the lever on the handle operator.

4. To open the door, insert screwdriver into handle screw and turn screw and handle counterclockwise. Door will only partially open if the operating handle is in the "On" position. If door fully opens with handle in the "On" position, adjust the interlock defeater lever upward and repeat steps 3 and 4.

NOTE: To open the door when the handle is in the "On" position, turn the latch defeater screw located on the side of the operating handle.