

Siemens Energy & Automation, Inc.
Bellefontaine, Ohio 43311 U.S.A.
Assembled in Mexico
© Siemens Energy & Automation, Inc.

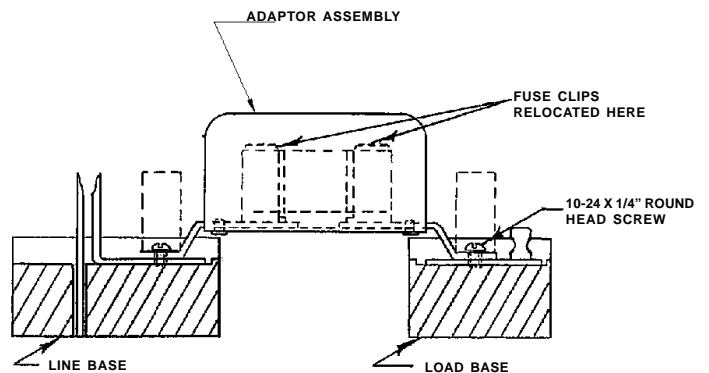
Installation Instructions

	<p>⚠ DANGER</p> <p>Hazardous voltage. Will cause death or serious injury.</p> <p>Turn power off supplying device before installing.</p>
---	--

	SAFETY INSTRUCTIONS
---	----------------------------

NOTE: This instruction outlines the recommended installation procedure.

1. Turn power off supplying device before installing kit.
2. Remove fuse clips from line and load base.
3. Mount adaptor assembly in fuse clip position with 10-24 X 1/4" round head screws as shown in figure above.
4. Mount fuse clips to adaptor assembly as shown in figure above.



NOTE: STAMP THE ASSEMBLY AREA LETTER ADJACENT TO THE INTERIOR LABEL.